

Bylaw 20804

A Bylaw to amend Bylaw 7188, as amended,
the North Saskatchewan River Valley Area Redevelopment Plan.

WHEREAS pursuant to the authority granted to it by the Planning Act on February 26, 1985, the Municipal Council of the City of Edmonton passed Bylaw 7188, as amended, being the North Saskatchewan River Valley Area Redevelopment Plan; and

WHEREAS from time to time Council finds it desirable to amend the North Saskatchewan River Valley Area Redevelopment Plan; and

WHEREAS City Council now deems it in the public interest to further amend the North Saskatchewan River Valley Area Redevelopment Plan;

NOW THEREFORE after due compliance with the relevant provisions of the Municipal Government Act RSA 2000, ch. M-26, as amended, the Municipal Council of the City of Edmonton duly assembled enacts as follows:

1. Bylaw No. 7188, as amended, is hereby further amended by:
 - a. Incorporating the changes identified in the map entitled “Bylaw 20804 North Saskatchewan River Valley (Central Area) Area Redevelopment Plan (as amended)”, attached hereto as Schedule “A” and forming part of this Bylaw, into the map “Bylaw 19647 Amendment To North Saskatchewan River Valley (Central Area) Area Redevelopment Plan (as amended)”.

- b. Renaming the map entitled “Bylaw 19647 Amendment To North Saskatchewan River Valley (Central Area) Area Redevelopment Plan (as amended)” to “Bylaw 20804 North Saskatchewan River Valley (Central Area) Area Redevelopment Plan (as amended)”.

READ a first time this	22nd day of April	, A. D. 2024;
READ a second time this	22nd day of April	, A. D. 2024;
READ a third time this	22nd day of April	, A. D. 2024;
SIGNED and PASSED this	22nd day of April	, A. D. 2024.

THE CITY OF EDMONTON

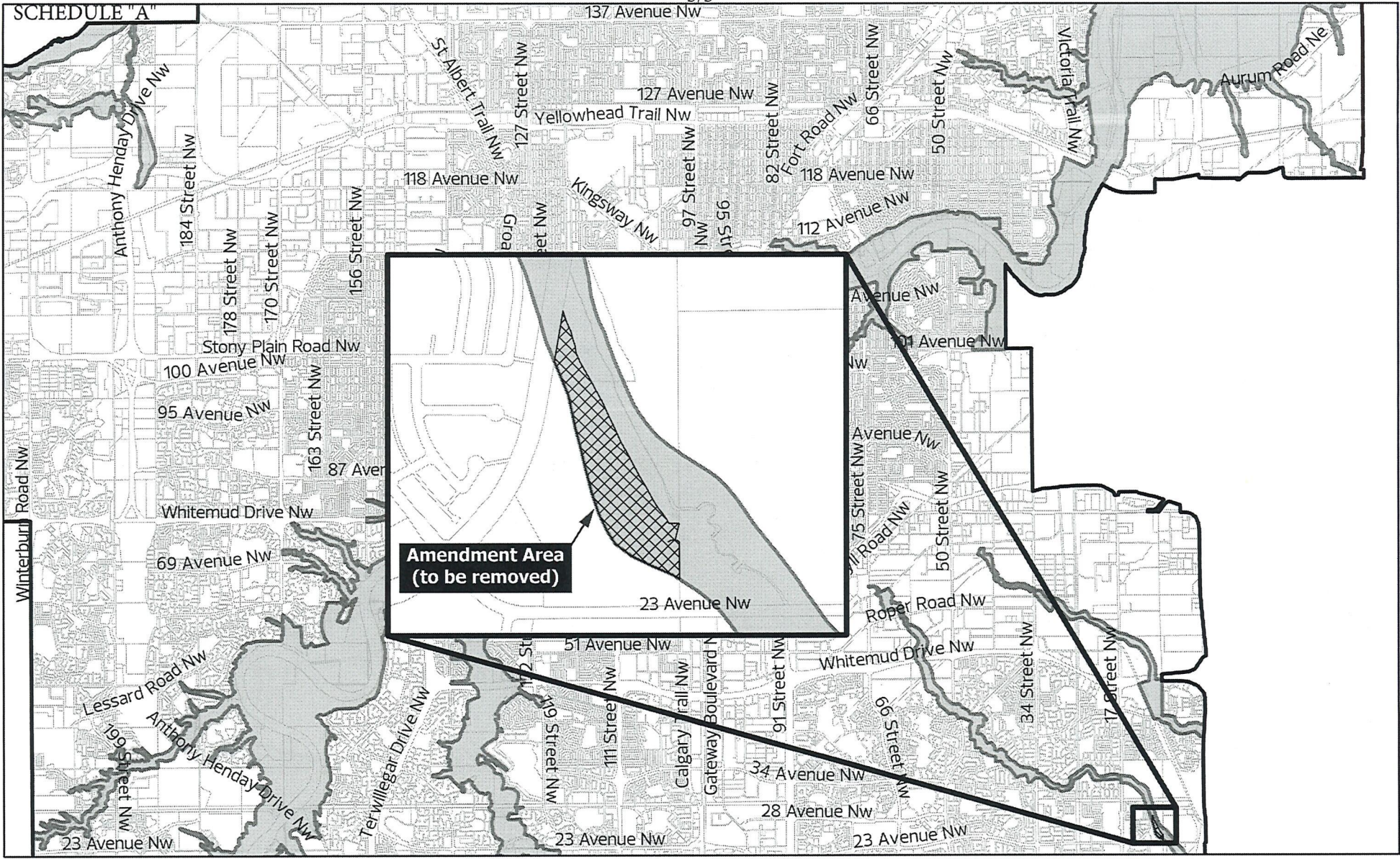


MAYOR






A/ CITY CLERK

SCHEDULE "A"



BYLAW 20804
NORTH SASKATCHEWAN RIVER VALLEY BOUNDARY (Central Area)
 Area Redevelopment Plan
 (as amended)

-  North Saskatchewan River Valley Boundary
-  Legal Block Lines
-  Amendment Area (Area to be Removed)

Note: In case of contradiction between the land use concept and other figures in the plan, the concept takes precedence.