

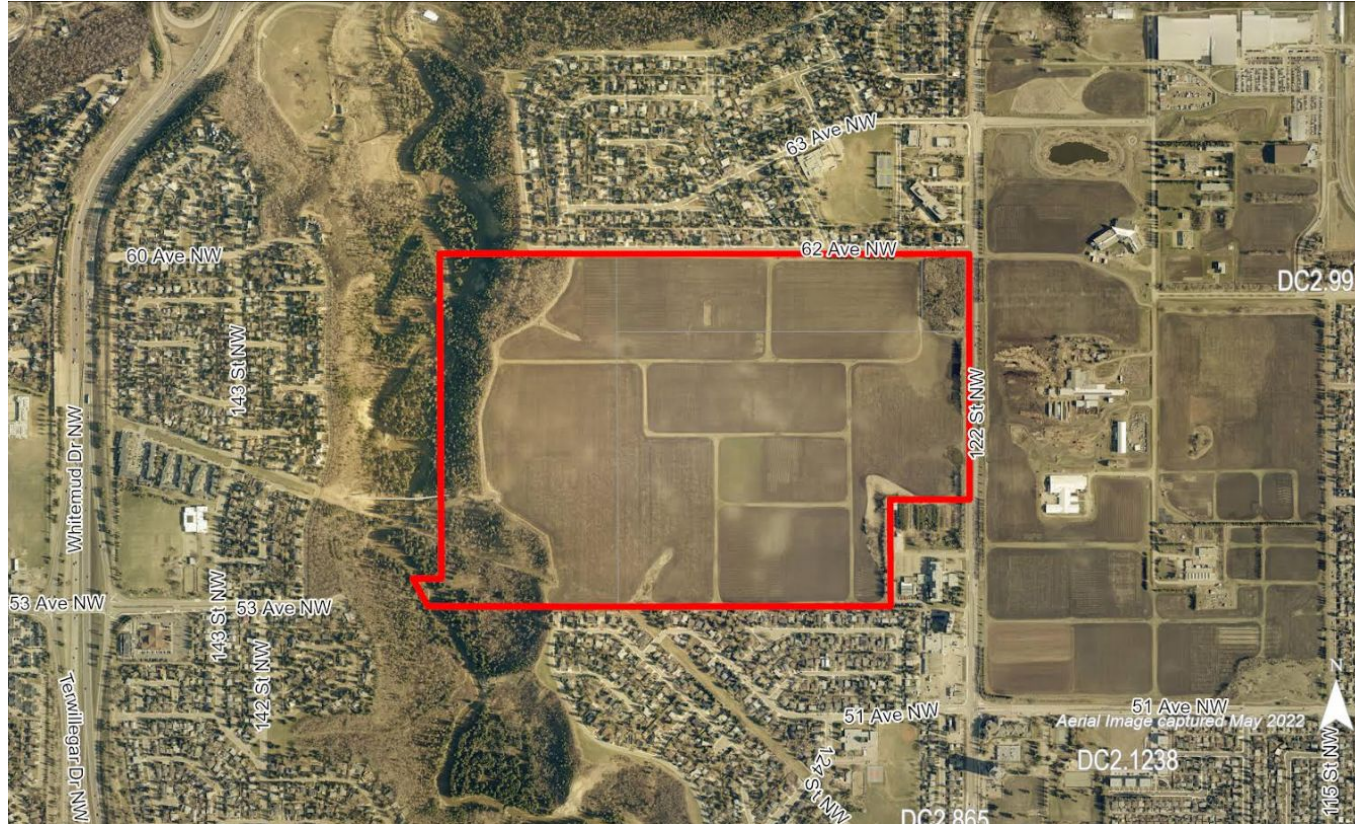
Urban Planning and Economy

Edmonton

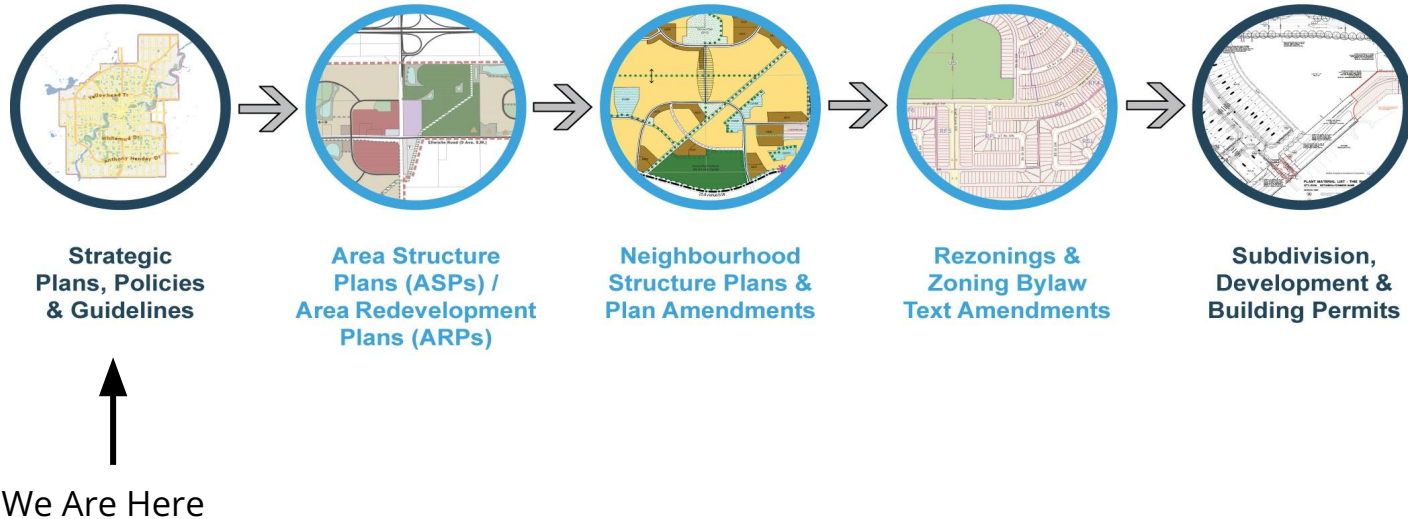
Neighbourhood Area Structure Plan - Council Authorization

Claire St. Aubin, Senior Planner
Development Services, City of Edmonton

Plan Area Context



Plan Making & Development Process

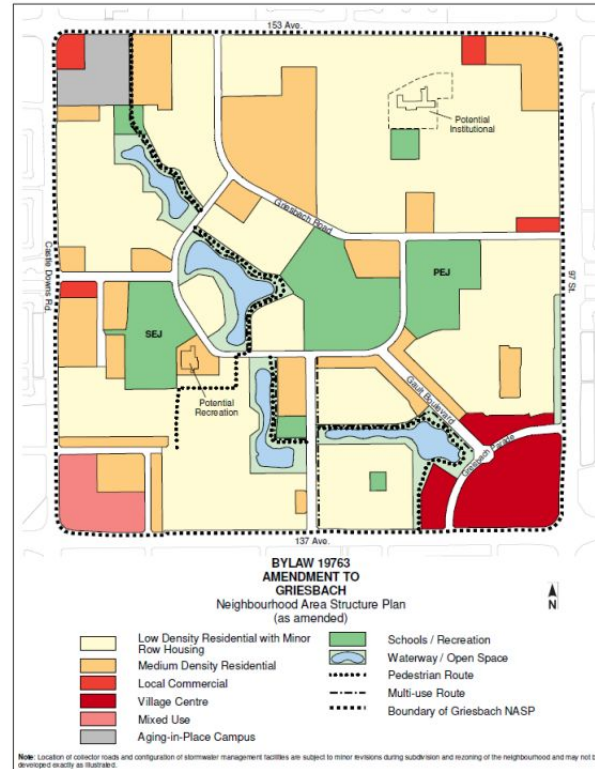


Neighbourhood Area Structure Plan (NASP)

Plan components:

- Land uses
- Design vision
- Mobility network
- Schools, open space
- Servicing
- Staging

Map 1* Griesbach Neighbourhood Area Structure Plan
As amended by Bylaw 19763 Approved July 6, 2021



Example NASP

Policy Context

A Rebuildable City

- 50% of new units added through infill city wide
- 600k additional residents welcomed into the redeveloping area



Next Steps - Application Analysis



Next Steps - City Council Public Hearing



Questions and Thank You

Claire St. Aubin, Senior Planner
Development Services, City of Edmonton

Edmonton