

ITEM 3.7  
CHARTER BYLAW 20822  
BELVEDERE

DEVELOPMENT  
SERVICES  
MAY 27, 2024





# SITE CONTEXT



# 3 ZONING COMPARISON

REGULATION	RL h65 (Current)	RM h23 (Proposed)
<b>Height (Max)</b>	65.0 m	23.0 m
<b>FAR (Max)</b>	5.5 - 7.5	3.0 - 4.4
<b>Minimum Setbacks</b> Front (Belvedere Gate & Belvedere Way)  Interior (RM h23)	1.0 - 3.0 m + 3.0 m stepback above 23.0 m in height  3.0 m + 3.0 m stepback above 23.0 m in height	1.0 m - 3.0 m  3.0 m
<b>Uses</b>	Commercial + Limited Residential Uses	Commercial + Limited Residential Uses

Comments

No Comments



CITY WEBPAGE  
March 7, 2024



MAILED NOTICE  
March 7, 2024



PUBLIC HEARING  
NOTICE  
May 2, 2024



JOURNAL AD  
May 10 & May  
18, 2024

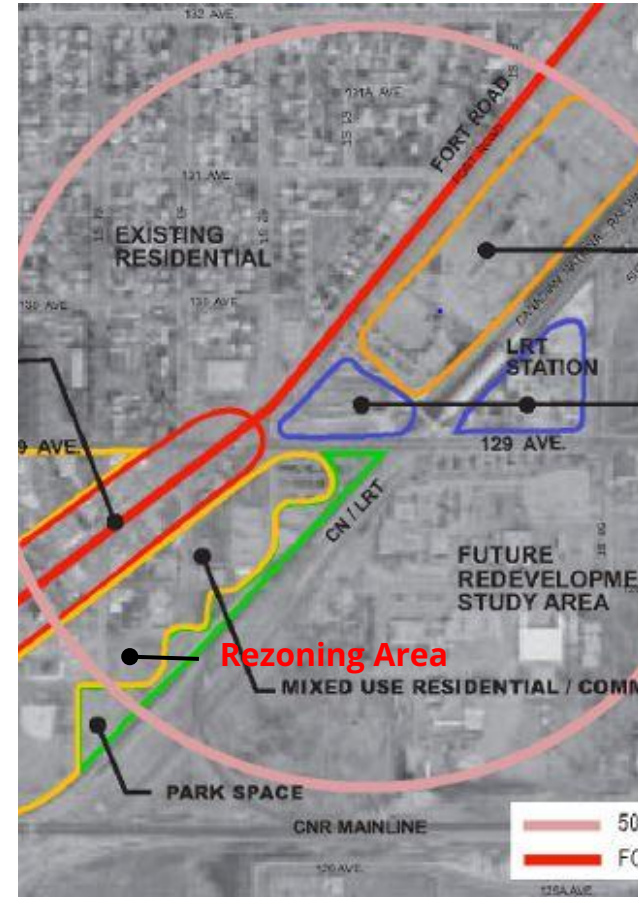




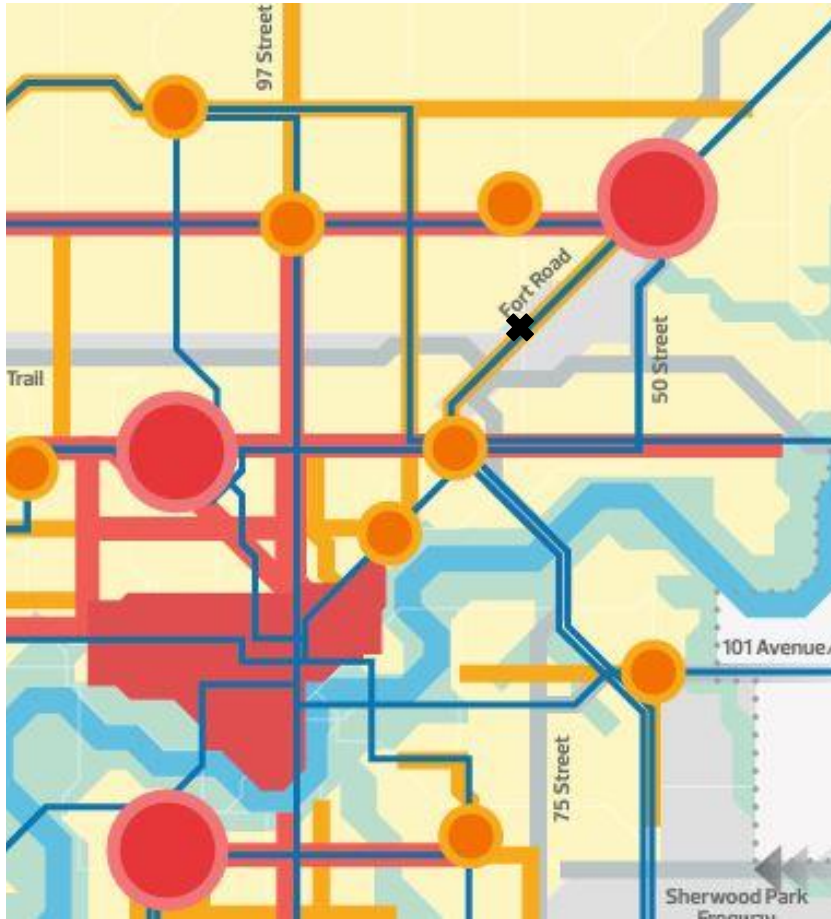
SITE VIEW



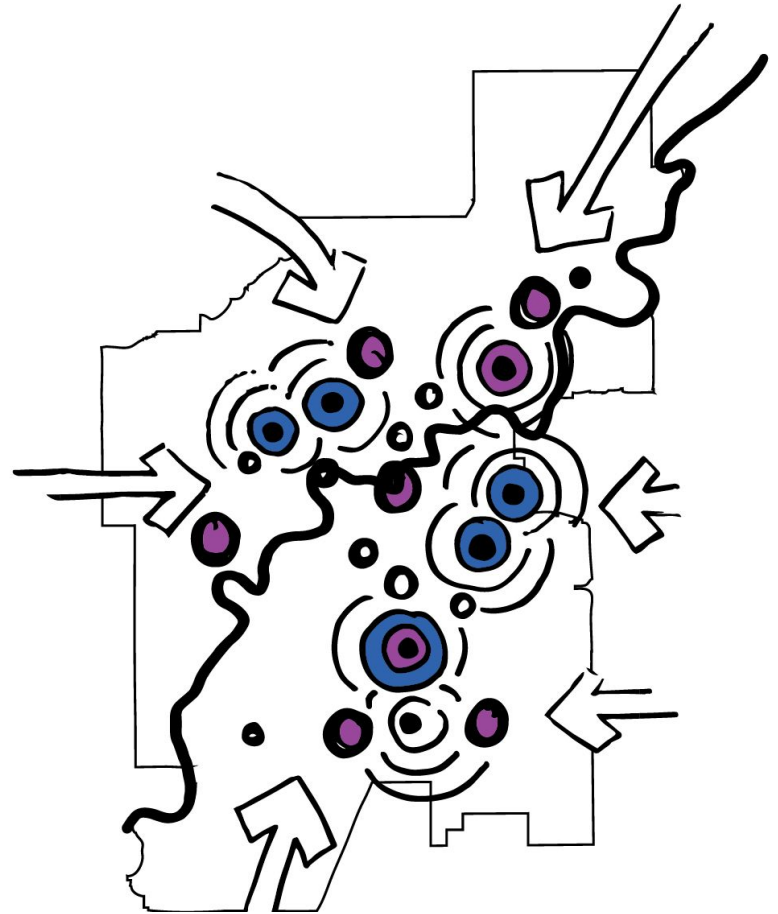
BELVEDERE ARP



FORT ROAD OLD TOWN MASTER PLAN

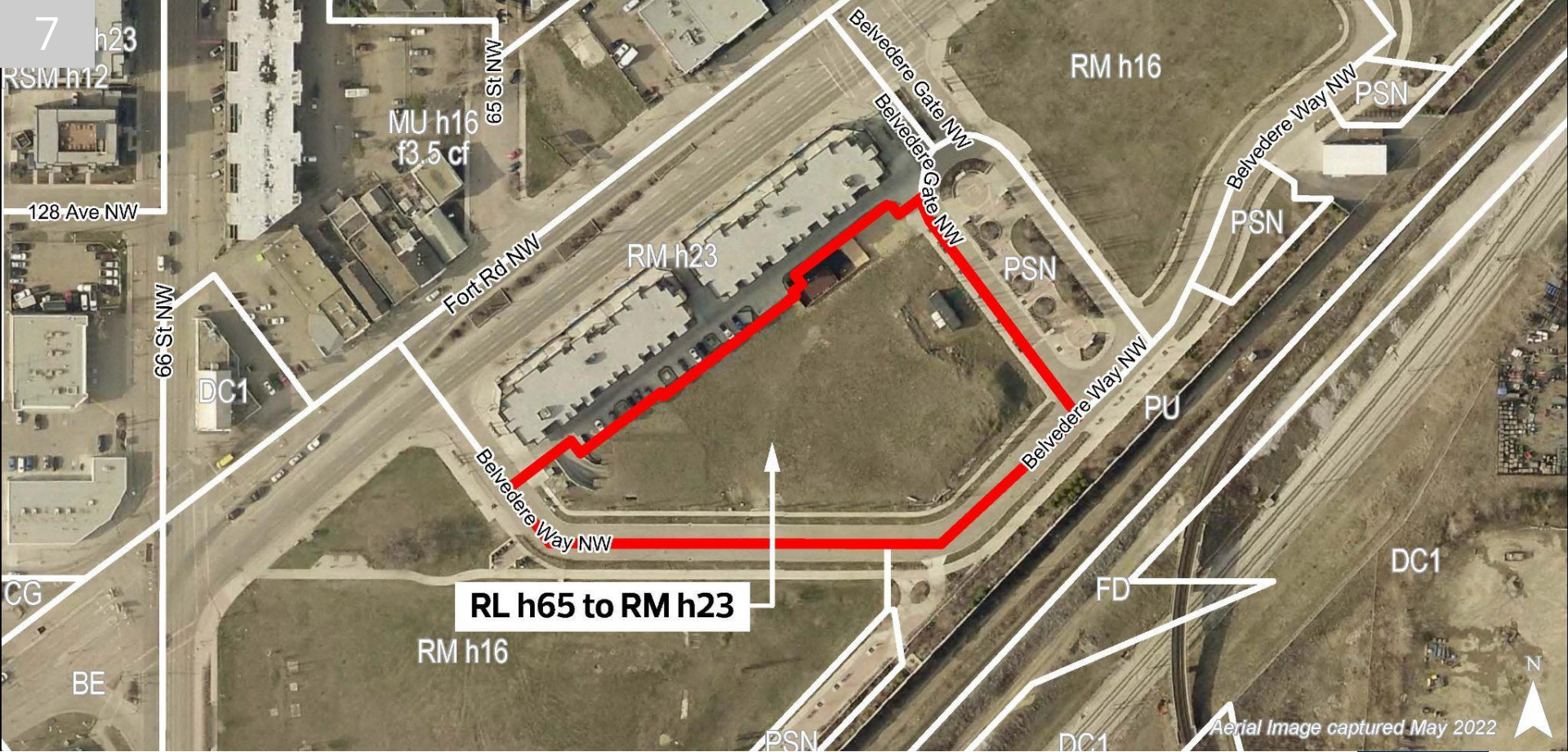


THE CITY PLAN



REBUILDABLE CITY





**RL h65 to RM h23**

ADMINISTRATION'S RECOMMENDATION: **APPROVAL**

