



# **EPCOR WATER SERVICES**

**2025-2027 Wastewater Collection and Treatment PBR**  
*Stormwater Update*

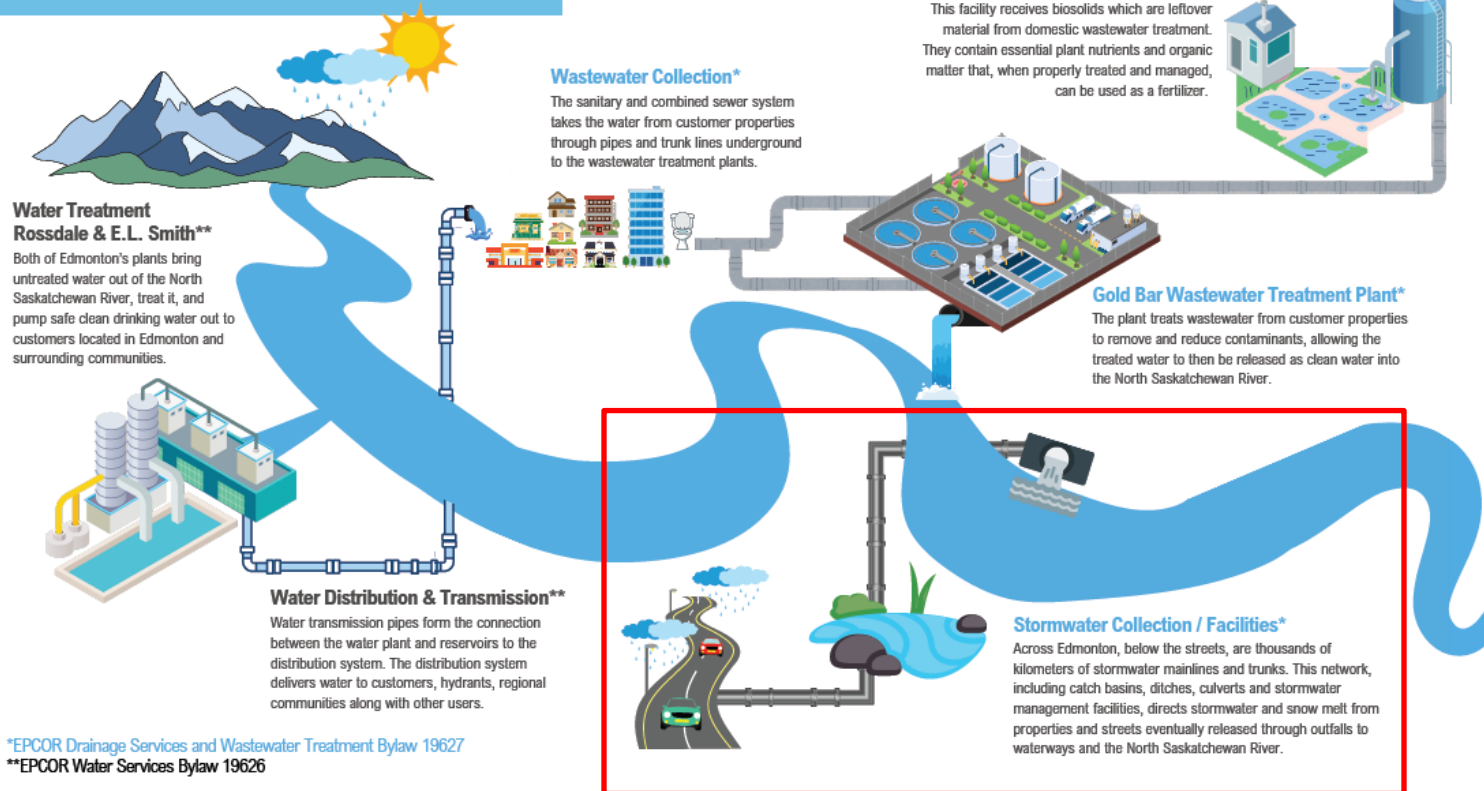


# Agenda

- Stormwater Background
- Changes to Stormwater Billing for 2025-2027 PBR
  - Cost of Service Study Updates
  - New Runoff Coefficients (Zoning)
  - Customers Added into Billing
- Customer Impacts and Engagement Plans

# Stormwater Utility

## EPCOR WATER SERVICES UTILITIES



\*EPCOR Drainage Services and Wastewater Treatment Bylaw 19627

\*\*EPCOR Water Services Bylaw 19626

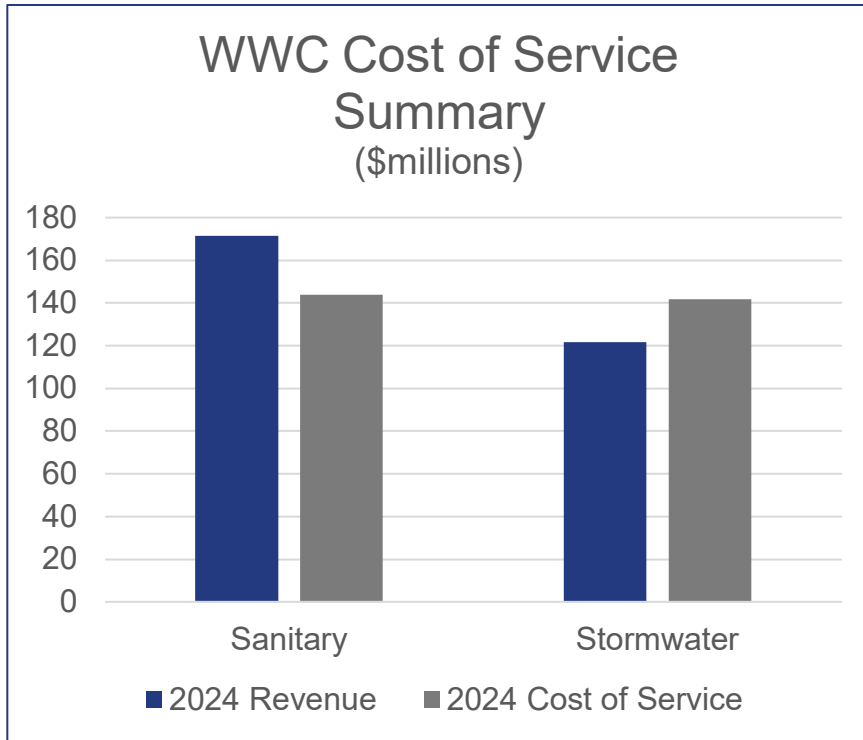
# Stormwater Rates and Billing

- The Stormwater rate structure is unchanged from when Drainage was part of City operations. It is unique compared to other rate structures for water, sanitary and wastewater treatment.
- The Stormwater bill is determined by:

## **Area x Runoff Coefficient x Intensity x Rate**

- **Area** is the size of the property
- **Runoff** is a measure of how fast water runs off property (based on zoning)
- **Intensity** is an adjustment of the runoff coefficient based on individual property characteristics
- **Rate** is the \$/m<sup>2</sup> charge for stormwater (set every PBR cycle)

# Increase in Stormwater Rates for all Customers



- This study determines the appropriate allocation of costs between Sanitary and Stormwater Utilities
- Study determined revenue to cost ratios for Sanitary and Stormwater each varied by 16%
- Acceptable range is +/- 5%
- Adjustments were made to reduce Sanitary rates and increase Stormwater rates to ensure rates reflect cost of service
- This change is largely offsetting for vast majority of customers

# New Runoff Coefficients for all Customers

- 2025-2027 PBR includes updated runoff coefficients to align with new City Zones
- Runoff coefficients determined by engineering review of average (typical) customer in each zone
- This change will impact a very small group of mostly commercial customers – including heavy industrial zone

Runoff Coefficient	Original Zone	New Zone
0.1	AG	
0.2	A, RR	A, AG, NA, RR, RVSA
0.3	AP, US (schools)	PS, PSN
0.4		FD
0.5	RF1-4, RMH, IH, MA, AGU	AJ, RS/RSF $\geq$ 450m <sup>2</sup>
0.55		DC < 700m <sup>2</sup> , PU, RM/RSM $\geq$ 450m <sup>2</sup> , RS/RSF < 450m <sup>2</sup> , UF
0.6		DC $\geq$ 700m <sup>2</sup> , RL, RM/RSM < 450m <sup>2</sup> , UI
0.65	RSL, RF5, RF6, RA7, RPL	CN, MUN
0.75	RA8, US (except schools), PU	BE, CB, CG, IH, IM, MU
0.9	RA9, CNC, CSC, CB1, CHY, CO, IB, IM, AGI, DC	
0.95	CB2	

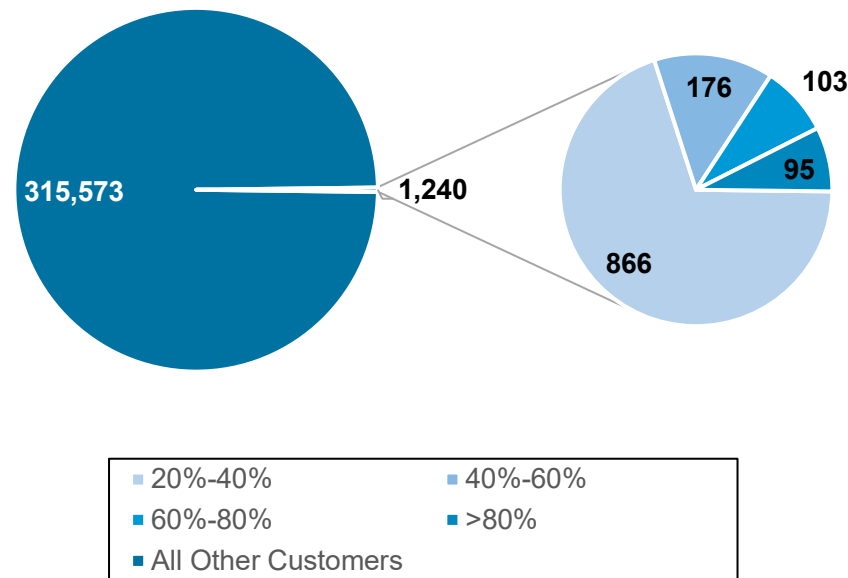
# New Properties in Billing

- To ensure fairness and equity for all customers, the following unbilled properties that utilize EPCOR's Stormwater services will be brought into billing
- **First Phase:** Properties with water and/or sanitary accounts billed starting in April 2025:
  - Some City of Edmonton properties (estimated bill increase of \$1.2 million (\$1.7 million increase in Stormwater bill offset by \$0.5 million decrease in Sanitary bill))
  - Some Private Cemeteries
  - Some Private Golf Courses
- **Second Phase:** Properties without water and/or sanitary accounts:
  - These include: parking lots, undeveloped lands, vacant lands and open spaces
  - Due to effort required to identify owners and set up accounts, we will gradually bring into billing
- Ultimately this will reduce rates for all customers as costs will be spread over a broader customer base

# Customer Bill Impacts – Before Mitigations

- Over 300,000 customers will not have a significant impact to their bill
- However, EWS has identified approximately 1,200 (mostly non-residential) customers with bill increases >20% and >\$15/month
- Most of these reflect customers who's individual zone changed (per New Zoning Bylaw)
- Some of these are due to EPCOR's correction to the average runoff coefficient for that zone (i.e., approx. 300 Heavy Industrial customers)

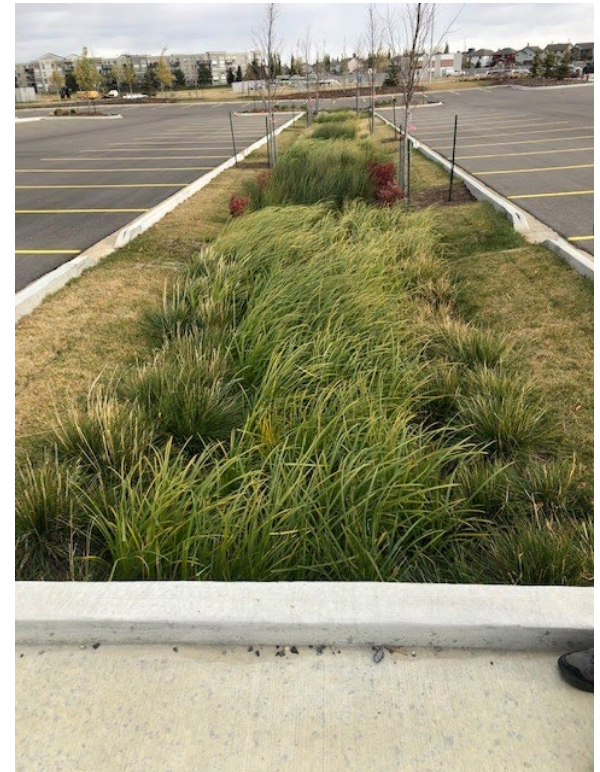
Portion of Customers with Bill Impacts Greater than \$15 and 20%





# Mitigations for Customer Bill Impacts

- For the approximately 1,200 customers with significant bill impacts, EPCOR will engage with each customer individually to look into options for mitigating bill increases
- Mitigation options:
  - For properties where the runoff coefficient for their zone is not reflective of actual land use:
    - Customers can apply for an adjustment to the runoff coefficient through the intensity factor
  - For properties where runoff coefficient is appropriate:
    - Customers can take advantage of EPCOR's new **Stormwater Rebate Program** to install stormwater retention infrastructure (such as LID) on their properties



# Questions