

2019 Edmonton declares a climate emergency



2004 Rain Event



Saskatchewan
Glacier
Recession



2023 Smoke



2023
Yellowknife
Evacuees



2024
Urban
Fire Risk



2021 Heat
Dome
Damage



2024
Alberta
Drought



Policy Gap #1

District Policy application appears limited to city-owned property in the public realm.



2.2 Energy Transition & Climate Adaptation

Policy 2.2.1.5 : *Encourage emission-neutral buildings, mobility and utilities infrastructure (or city owned?) through renewable energy projects, retrofits and efficiency improvements.”*

Policy 2.2.1.8: *Incorporate climate-resilience considerations into the design of municipal (or city-owned?) buildings and infrastructure.*

Unclear: Are these policies limited to the public realm?
What policy is applied to private sector development?

2.2.5 General Policy



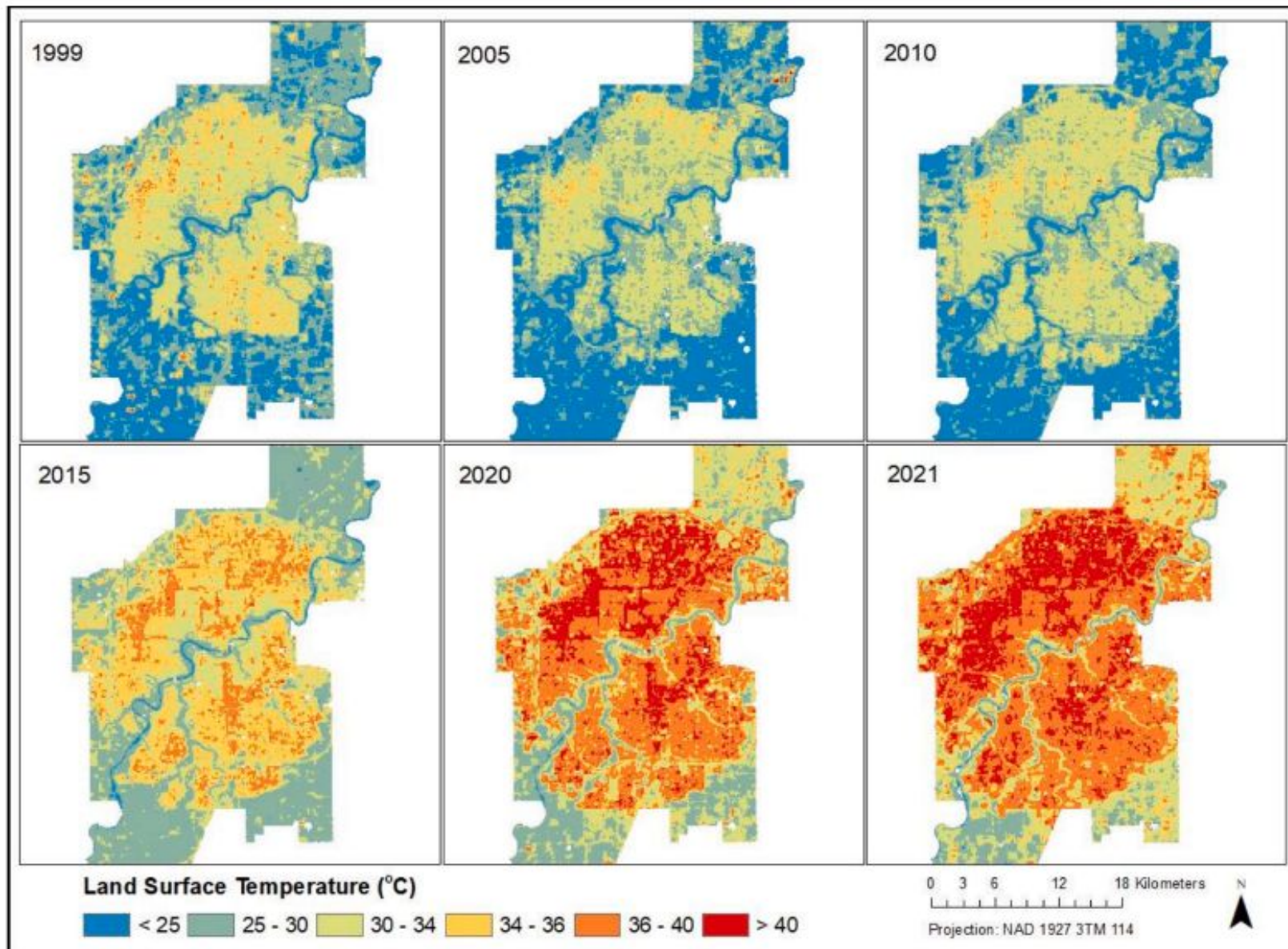
Policy 2.2.5.1 *Expand the urban tree canopy by increasing tree plantings in parks and along roadways, including local and Collector Roadways internal to neighbourhoods.*

Limited to public realm not private sector development.

Increasing Land Surface Temperatures

UofA's Dr. Agrawal, 2023 research findings:

- Edmonton lost 15% vegetative cover in past 2 decades.
- Urban Heat Island is the difference in land surface temperature between urban and rural areas.
- In 1999 rural temp < 25 C urban temp 30-34.
- By 2021, rural temp 30-34 urban temp 36 to > 40 C & Urban Heat Island Effect of > 8 C up to 12 C.



2020 Regional Tree Canopy Cover & Impervious Surface March 2024



Policy to expand tree canopy city-wide is needed!

Section 255 Physical & Environmental Risk Management

2.5.5.1 Minimize oil and gas well sites' potential environmental hazards and disruption of future development.

2.5.5.2 Require urban development around oil and gas facilities including abandoned well sites to adhere to Provincial and Municipal requirements and policy.

2.5.5.6 Manage risk associated with heavy industrial facilities, railway and major utility corridors, high-pressure pipelines

District policy does not mitigate environmental risk associated with loss of vegetative cover, mature tree canopy and increased development imperviousness resulting from private sector growth.

Please consider Subsequent Motion to:

Ensure District Policy is effective in integrating climate action throughout the planning continuum and applied city-wide to future public and private sector development by reviewing and updating policy to ensure:

- 1) adaptation to climate change, climate resilience, carbon reduction and energy transition,
- 2) management of environmental risk and associated economic and social risks, and
- 3) alignment with the Climate Resilience Planning and Development Framework.