

ITEM 3.25

BYLAW 20881

To allow for a range of small to medium scale housing, Rundle Heights

EDMONTON CITY COUNCIL
PUBLIC HEARING

August 19, 2024

Jeff Booth, Situate

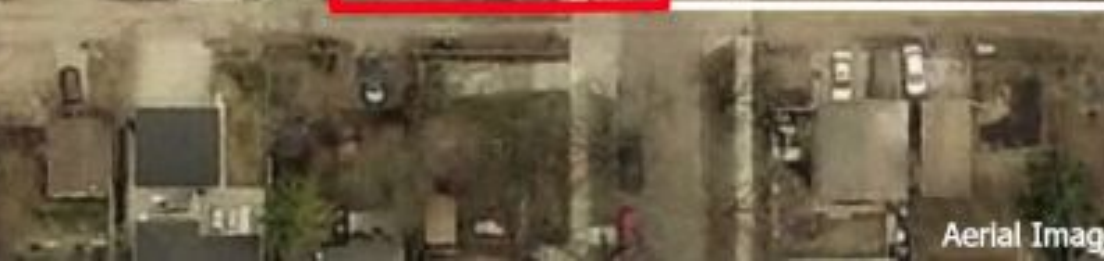


situate
PLANNING + PLACEMAKING



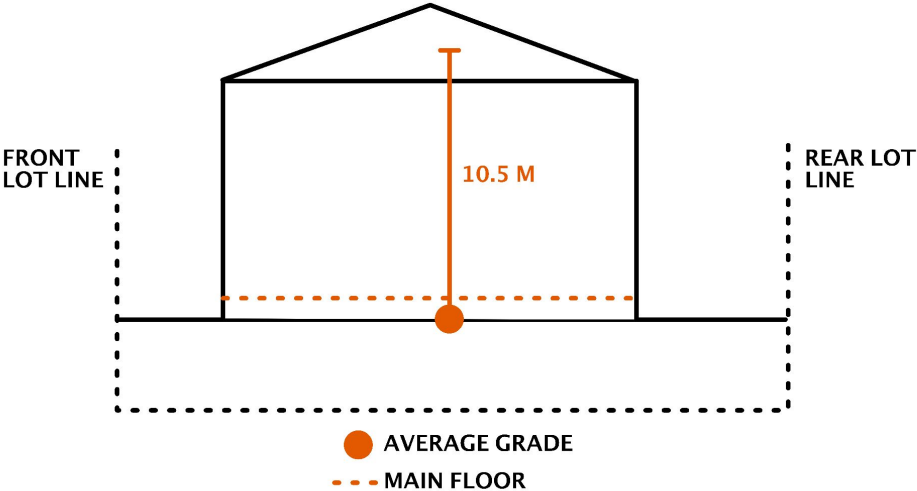


- 2.5.2.5 Support Low Rise development (residential, commercial or mixed use) in locations outside of Nodes and Corridors that meet at least one of the following criteria:
- On corner sites at the **edge of the neighbourhood** where the block face fronts onto an Arterial Roadway or Collector Roadway

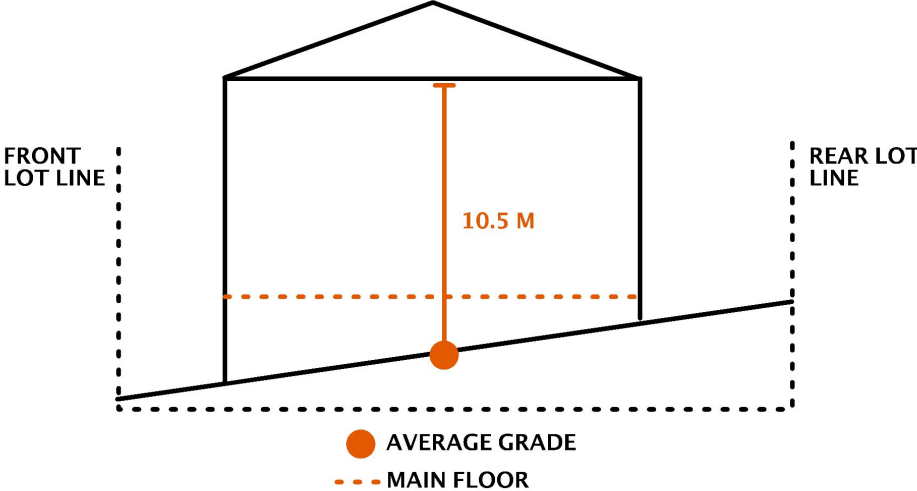




GRADE AND BUILDING HEIGHT



**BUILDING WITHIN 10.5 M
MAX.**



**BUILDING OVER MAX.
HEIGHT**



°situate

PLANNING + PLACEMAKING

Jeff Booth
(780) 203-6820 | jeff@situateinc.ca