

Community Services

Implications of Limiting Temporary Shelter Locations

Edmonton

Urban Planning Committee

August 27, 2024

Emergency Shelter Best Practices Guide

Drivers For Review

- 3 year review commitment
- Different shelter environment
- Provincial Government actions and investments
- Council motions: appropriate size and location of shelters



Best Practice Guide Inputs

- Jurisdictional scan
- Literature review
- Multiple rounds of internal and external engagements and reviews



Major Updates

- Core elements remain
- New name
- Recommended approach - shelters identify scope and area of focus
- Revamp of overall structure
- Links to helpful research and documents

Emergency Shelter Best Practices Guide

Drivers For Review

- 3 year review commitment
- Different shelter environment
- Provincial Government actions and investments
- Council motions: appropriate size and location of shelters



Best Practice Guide Inputs

- Jurisdictional scan
- Literature review
- Multiple rounds of internal and external engagements and reviews



Major Updates

- Core elements remain
- New name
- Recommended approach - shelters identify scope and area of focus
- Revamp of overall structure
- Links to helpful research and documents

Emergency Shelter Best Practices Guide

Drivers For Review

- 3 year review commitment
- Different shelter environment
- Provincial Government actions and investments
- Council motions: appropriate size and location of shelters



Best Practice Guide Inputs

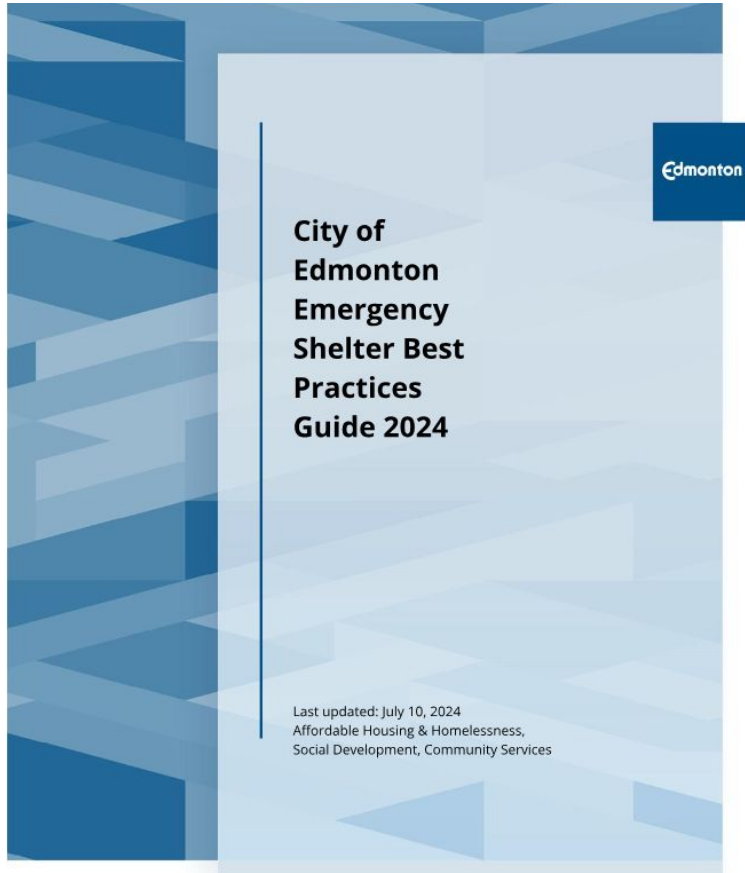
- Jurisdictional scan
- Literature review
- Multiple rounds of internal and external engagements and reviews



Major Updates

- Core elements remain
- New name
- Recommended approach - shelters identify scope and area of focus
- Revamp of overall structure
- Links to helpful research and documents

Emergency Shelter Best Practices Guide - Utility



1. **Advice and Recommendations**

Support shelter operators to improve shelter design, operations, and programming

2. **Aspirational Shelter Elements**

Set of elements that operators can work towards in the future

3. **Communication Tool**

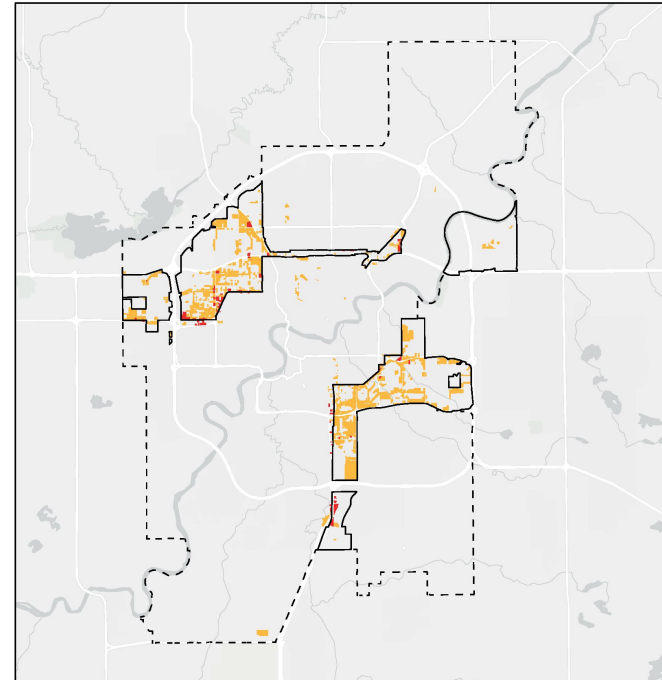
Useful tool for operators, key sector parties, and the City of Edmonton to identify and communicate strategic investment opportunities

Zoning Bylaw 20001

- Shelters permitted as a Community Service use in most Residential, Commercial, and Mixed Use zones
- Shelters are permitted in the Business Employment (BE) Zone with a floor area limit of 500m²
- Should larger shelters be allowed in industrial and quasi-industrial areas in the BE Zone?
- Should additional limitations on shelter location be placed on the Business Commercial (CB) Zone?

Shelter Size and Location

- Business Commercial (CB) sites along periphery of major non-residential areas
- Business Employment (BE) sites located throughout industrial areas



■ Properties zoned BE Business Employment
■ Properties zoned CB Business Commercial
— Established Non-Residential Area
- - - City of Edmonton Boundary

0 2.5 5 10 Kilometres



City of Edmonton
Urban Planning & Economy
June 2024

Edmonton

Shelter Size and Location

- Little research on ideal shelter size
- Engagement Feedback
 - ◆ Difficulty in finding suitable locations for emergency shelters
 - ◆ **No restrictions on the size, location or spacing of shelters**
 - ◆ Ideal shelter size dependant on program approach and shelter guest population
 - Ranges of 30-50 or 100-125 persons per site, depending on the programming model
 - ◆ Concerns with shelter location/size limitations:
 - Challenge to quickly create new shelter sites or increase capacity at current sites as needed
 - Limitation on ability to open where the need was greatest
 - Funding opportunities may be lost

Recommendation

- No proposed restrictions for shelter sites on Business Commercial (CB) sites
- No shelter sites permitted where Business Employment (BE) sites about Heavy Industrial (IH) sites
- Remove 500m² floor area limit for Year-Round and Seasonal Shelters in the Business Employment (BE) Zone

Next Steps

- Administration will continue to be available to emergency shelter providers to support their continuous improvement efforts
- If Urban Planning Committee support Administration's recommendation for the proposed text amendment to Zoning Bylaw 20001 (Attachment 7):
 - ◆ Proceed to Oct 1, 2024 Public Hearing for text amendment
 - If approved, allows development permits for proposed shelters to be reviewed under the new rules in time for the 2024 winter season

Thank you.

Edmonton