

**Public Hearing Agenda item 3.10
by**

**Sherry Heschuk
September 9, 2024**

Territorial Acknowledgement

Virginia Park it's buildings, and land are primarily located on the traditional territory of Cree, Blackfoot, Métis, Nakota Sioux, Iroquois, Dene, and Ojibway/Saulteaux/Anishinaabe nations; lands that are now known as part of Treaties 6, 7, and 8 and homeland of the Métis. We respect the sovereignty, lands, histories, languages, knowledge systems, and cultures of First Nations, Métis and Inuit nations.

Guiding Principles

The Curb Cut effect ensures that there will be emphasis on the safety of our community and examples made available:

Maintaining water and sewage facilities, roads, sidewalks and municipal buildings requires good planning and, of course, resources. Many communities rely to a substantial extent on provincial and federal grants, but local residents **must directly bear** part of the burden. This requires local officials to be aware of upcoming challenges and ensure money is in place to support the necessary work.”¹

1. [Assessing the Viability of Smaller Municipalities: The Alberta Model](#)
[Kimberly Jones, Mukesh Khanal, and Kevin McQuillan](#) p. 13

Outcomes for terms of Public engagement

- Outcome #2: Council champions for public engagement for the City, who provide the perspective of City Council to the Coalition and liaison with City Council regarding the Coalition's work.
 - Ensure community perspectives remain forefront throughout the implementation of the Public Engagement Policy.

Existing Related Corporate Programs

- Operations of the Public Engagement section, Engagement branch, Communications and Engagement department

Timelines

- This Council Initiative will report to the Executive Committee twice a year, with the exception of the final year in which the second report will be made to City Council.

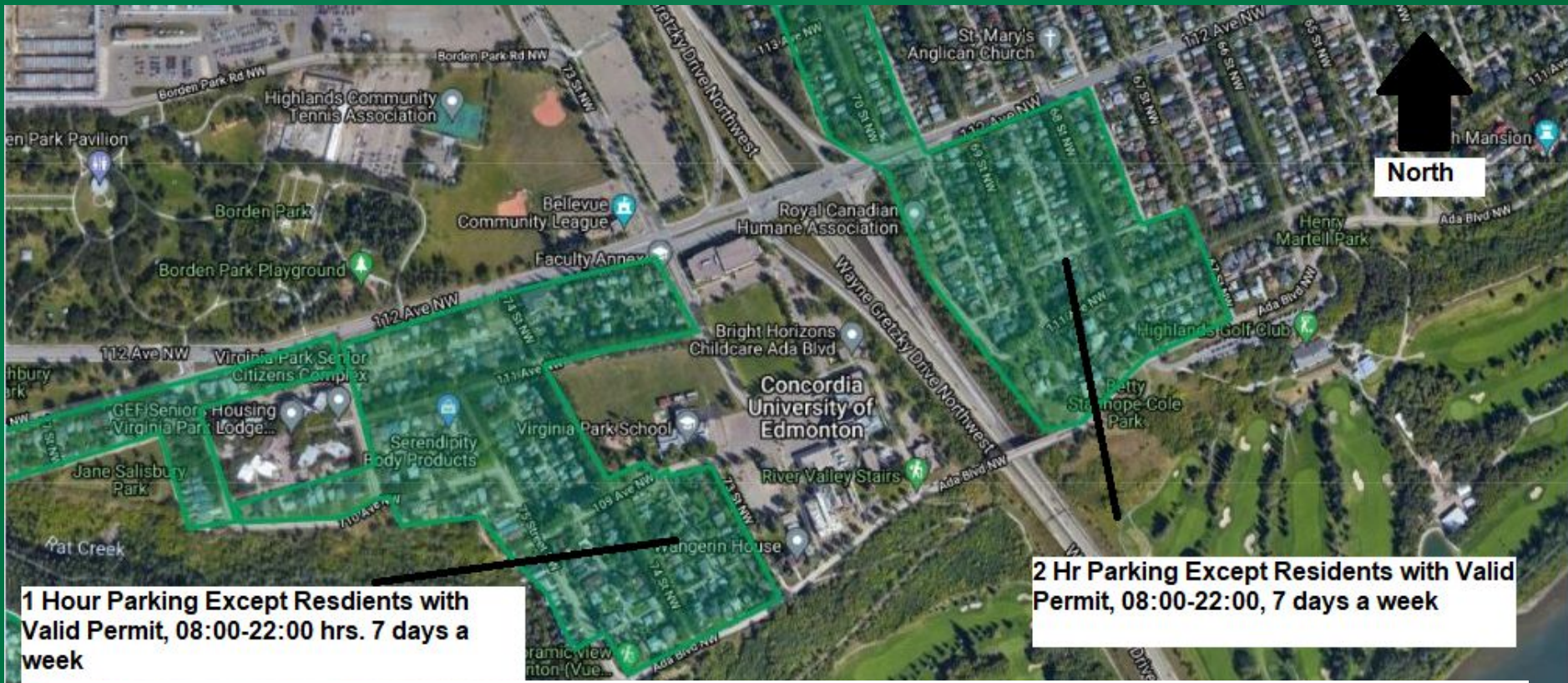


Land use including modes of transit and how we access the roads in our community ²

The 2016 census assumes that the commute to work originates from the usual place of residence, but this may not always be the case. Sometimes, respondents may be on a business trip and may have reported their place of work or main mode of commuting based on where they were working during the trip. Some persons maintain a **residence close to work and commute only by walking or biking**. Students often take classes and then leave after school at a location near their school, or from 112 Ave (parking lot) to the north. As a result, the data may show unusual commutes or unusual main modes of commuting. There is only one road that is accessible on 71 st is there any infrastructure for this building for

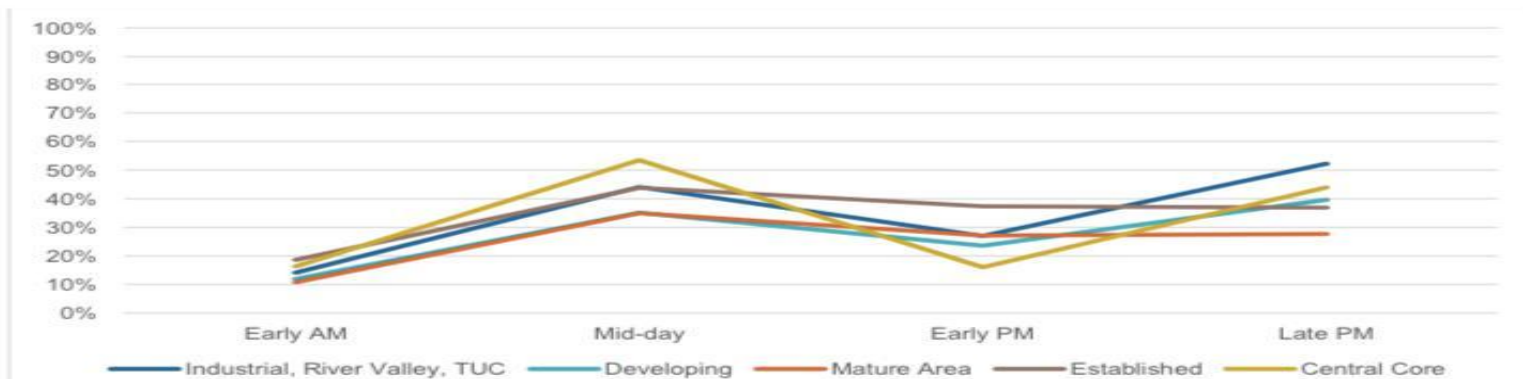
Utilities and other technical services, ,waste management and others?

[2. Main Mode of Commuting \(10\), Industry - North American Industry Classification System \(NAICS\) 2012 \(21\), Occupation - National Occupational Classification \(NOC\)](#)

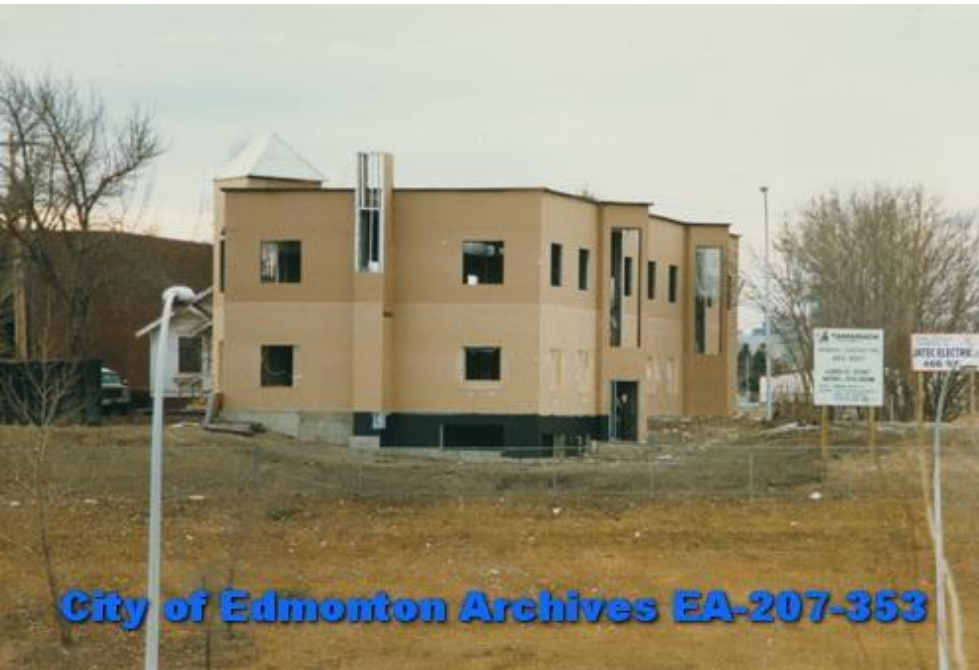


COMPREHENSIVE PARKING STUDY – PHASE I | FINAL REPORT
City of Edmonton

Figure 3-15 Maximum Observed Parking Utilization (cumulative), by Time of Day and Neighbourhood Group (City-defined)



Can we encourage the students and other stakeholders that this is a building to remember?



Please consider how the current bylaws have any consideration for our community of Virginia Park



Rezoning application - 2 1/2 months only

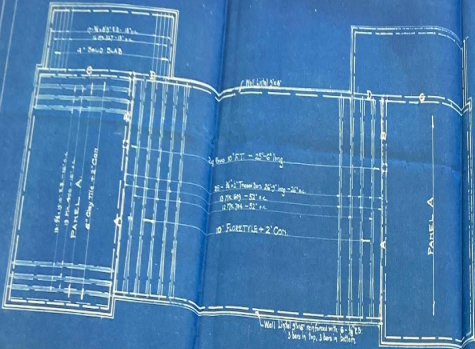
Bylaws Third Reading for public hearing September 9, 2024 for the land use bylaws these would include new amendments to the current bylaws.

Heat Island Effect on tall buildings causes heat/cooling to be an environmental concern.³

#5: Increased Space Cooling Demand (Climate Hazard, Increasing)

Description	Increase in cooling degree days; the number of degree days accumulated above 18°C over the period of a year. Cooling degree days provide an indication of the amount of space cooling (passive or active air conditioning) that may be required to maintain comfortable building conditions during warmer months.	
Climate Driver(S)	Increasing summer temperatures, more hot days and heat waves	
Threshold:	A year with 11 times the Cooling Degree Days the Region gets historically	
Historic Likelihood	12 Degree Days per year (median) ²⁶ 3% annual probability of 144 DDs in one year	3 (Possible)
Future Likelihood	144 Degree Days per year (median) 52% annual probability of 144 DDs in one year	5 (Almost Certain)
Potential Consequences	Increased building energy costs (about \$710 million additional costs across residential, commercial and institutional building) Increased maintenance costs for HVAC systems and controls	5 (Very High)
	Increased greenhouse gas emissions Increased power demand and costs if new generation is required Increased risk of power outages	3 (Moderate)
Determinants of Vulnerability	Condition and efficiency of HVAC systems Condition and energy efficiency of building envelope Energy prices and energy source Prevalence of energy poor individuals and families	





PLAN - CHAPEL ROOF & PENTHOUSE FLOORS

Code	Beam Schedule	Beam	Span	Depth	Weight	Area	Volume	Notes
A	1	1	1	1	1	1	1	
B	2	2	2	2	2	2	2	
C	3	3	3	3	3	3	3	
D	4	4	4	4	4	4	4	

Beam	Span	Depth	Weight	Area	Volume
1	1	1	1	1	1
2	2	2	2	2	2
3	3	3	3	3	3
4	4	4	4	4	4

Beam	Span	Depth	Weight	Area	Volume
1	1	1	1	1	1
2	2	2	2	2	2
3	3	3	3	3	3
4	4	4	4	4	4

Beam	Span	Depth	Weight	Area	Volume
1	1	1	1	1	1
2	2	2	2	2	2
3	3	3	3	3	3
4	4	4	4	4	4

Beam	Span	Depth	Weight	Area	Volume
1	1	1	1	1	1
2	2	2	2	2	2
3	3	3	3	3	3
4	4	4	4	4	4

TRUSSON SYSTEM OF REINFORCED CONCRETE

PLAN
CHAPEL ROOF & PENTHOUSE FLOORS
TEACHING BUILDING
CONCORDIA COLLEGE
SPRINGTON

TRUSSON CONCRETE STEEL COMPANY
OF CANADA LIMITED
VAN NEUVILLE

25-2-4

Concordia
Teaching Building
Trusson details
of Center Windows
and features
Teaching building
Woodward & Looney
Architects



1. 1/2" thick

1/2" thick

Side View
to right side
(Stone)

1/2" thick

1/2" thick

Center line

Repeat
Tracing

stone

stud angle

3/4" thick
Repeat

Blind
Dip

Window head

Acknowledgements

Slide 2 "[Curb-Cut Effect](#)", published in Stanford Social Innovation Review, Winter 2017.

Slide 3 & 4 [Assessing the Viability of Smaller Municipalities: The Alberta Model Kimberly Jones, Mukesh Khanal, and Kevin McQuillan](#) p. 13

Slide 5 <https://www12.statcan.gc.ca/census-recensement/geo/maps-cartes/pdf/A0005/2016A00054813055.pdf>

Slide 6 [Main Mode of Commuting \(10\), Industry - North American Industry Classification System \(NAICS\) 2012 \(21\), Occupation - National Occupational Classification \(NO](#)

Slide 7

https://www.edmonton.ca/city_government/urban_planning_and_design/zoning-bylaw-renewal

Slide 8 https://drive.google.com/file/d/1J0-YX9KtvIvKiHbghZM5gwgme_jun2j/view?usp=sharing

Slide 9 & 10 <https://archivescanada.accesstomemory.ca/magoon-and-macdonald-architects-fonds> at City of Edmonton Archives Slide 9- Jasper Avenue at 71 Street, administration and teaching block, and East Dormitory, 1926; addition of four new residence buildings, 1929 of Oversized Blue prints. Slide 10-George Heath Macdonald architect drawings of window and panels in the teacher's dormitory and other artifacts of 20 architectural plans and drawings, primarily of churches in and around Edmonton.

QUESTIONS?

