



**RS to RSM h12.0**

83 Ave NW

RM h16

RS

81 St NW

MU h16  
f3.5 cf

CN

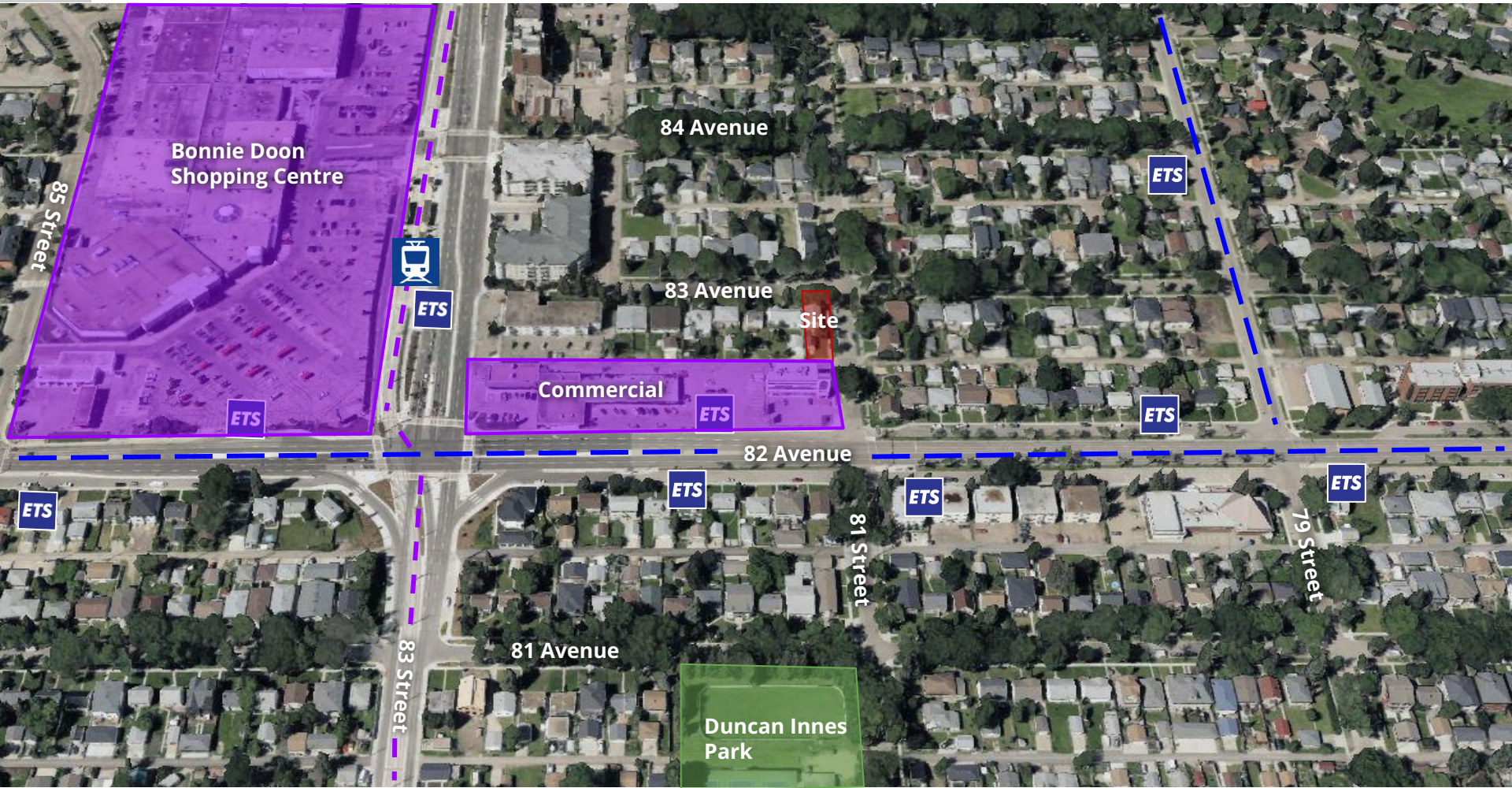
Aerial Image captured Fall 2023



**ITEM 3.13**  
**BYLAW 20917**  
**IDYLWYLDE**

**DEVELOPMENT**  
**SERVICES**  
**SEPT 9, 2024**





## Comments

### Opposition (1)

- Against any redevelopment on the site.

### Mixed/Questions (1)

- Need clarification on the proposal.



CITY WEBPAGE  
May 27, 2024



MAILED NOTICE  
May 30, 2024



SITE SIGNAGE  
June 19, 2024

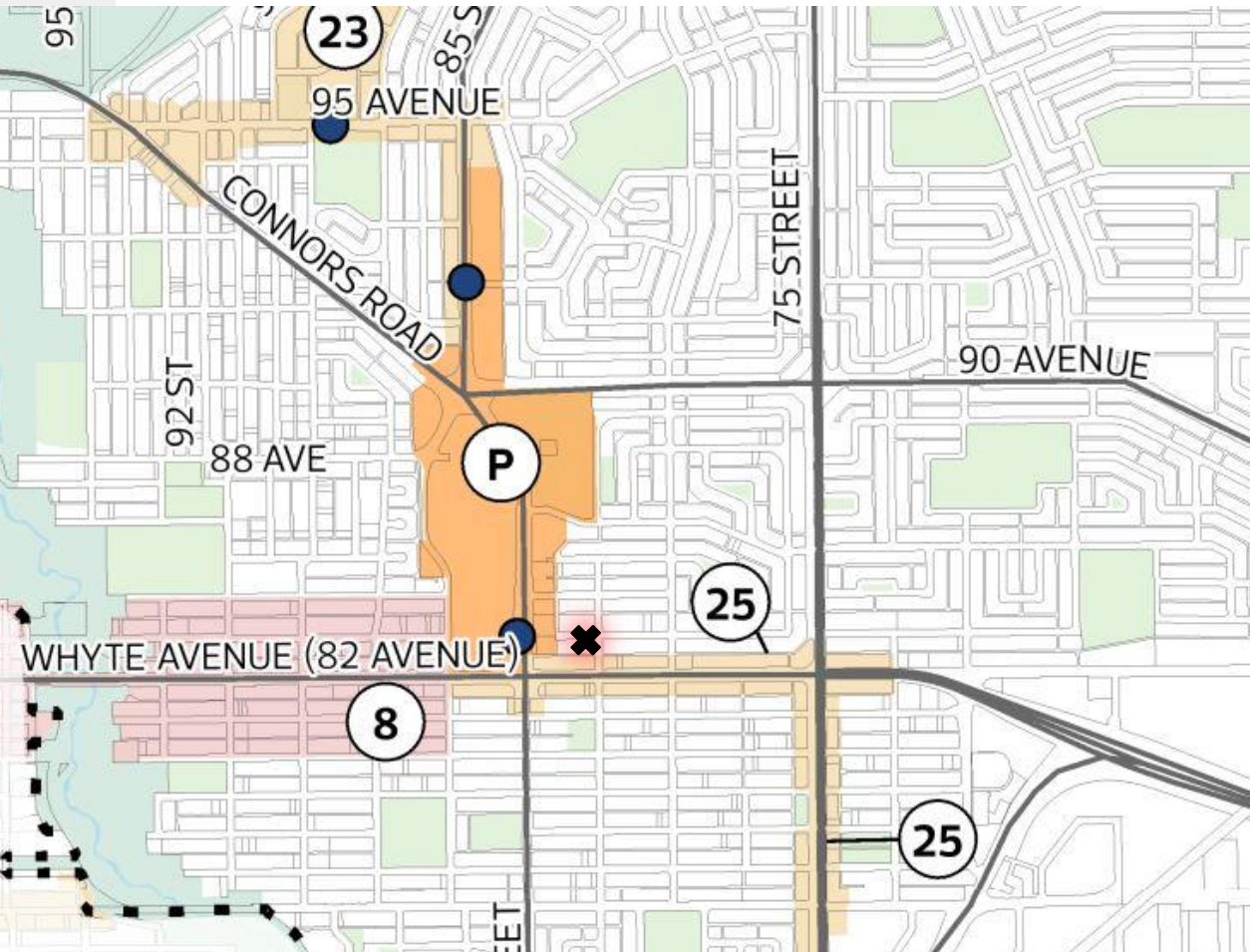


PUBLIC HEARING  
NOTICE  
August 15, 2024



JOURNAL AD  
August 23 &  
August 31, 2024

## POLICY REVIEW - SOUTHEAST DISTRICT PLAN



## Map 3: Nodes and Corridors

## Transit

- Mass Transit Station - Current

## Nodes and Corridors

- District Node
- Ⓟ Bonnie Doon
- Primary Corridor
- Ⓢ Whyte Avenue
- Secondary Corridor
- Ⓣ 95 Avenue
- Ⓣ Whyte Avenue/75 Street



ADMINISTRATION'S RECOMMENDATION: **APPROVAL**

