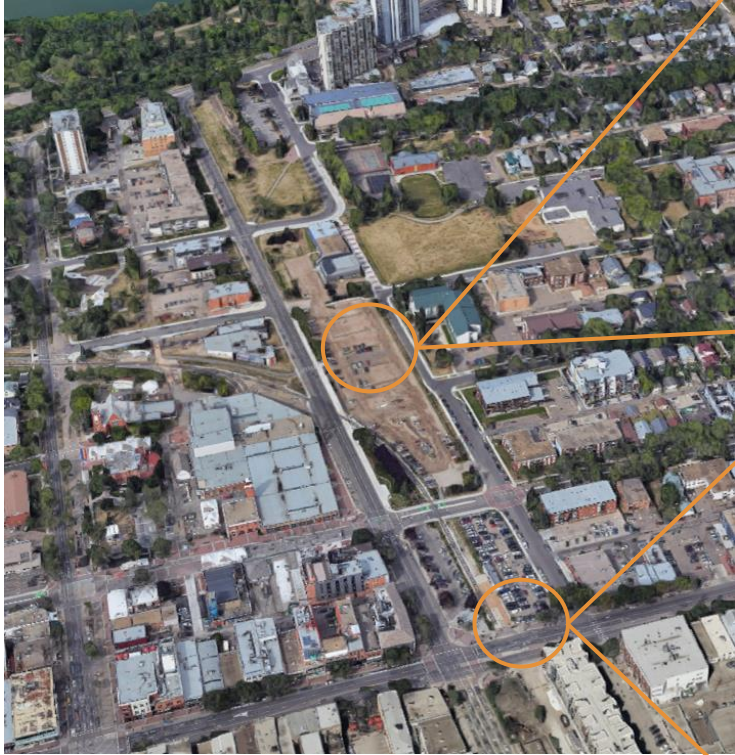


Old Strathcona Public Realm Strategy

Jerreck Connors, RPP, MCIP







- Key Actions
- Landmarks
- Dedicated Mass Transit Lanes

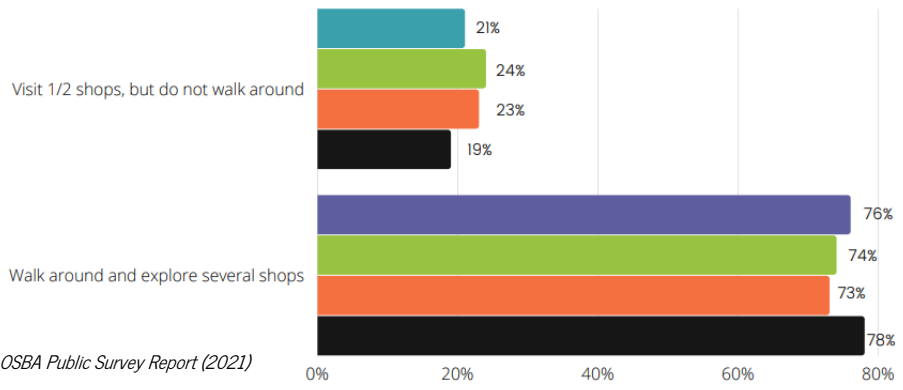
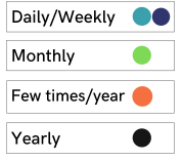
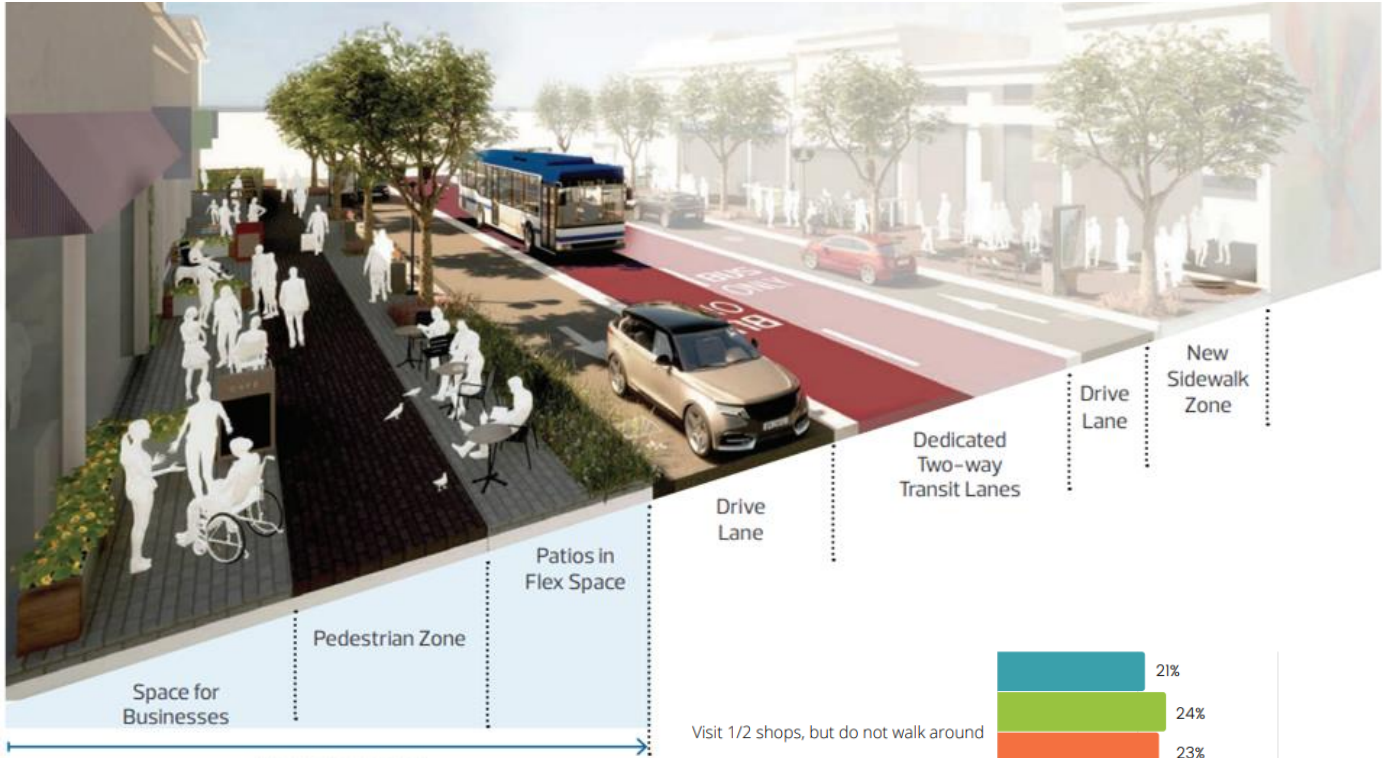
- 1 Create a District Park
- 2 Create a Gateway Greenway
- 3 Create an Urban Plaza
- 4 Improve End of Steel Park and Support Mixed Market Development of Parking Lot
- 5 Support Development next to Connaught Armoury
- 6 Pedestrianize 83 Avenue
- 7 Prioritize Pedestrians on Whyte Avenue



EXISTING OPEN SPACE

- | | | |
|---|--------------------------|-----------------------------|
| 1. Garneau Park 1 | 6. Old Scona School Park | 11. Strathcona Park |
| 2. E.L Hill Park | 7. Tipton Park | 12. King Edward School Park |
| 3. Strathcona Park 2
(Community Rail Garden) | 8. Walter Polley Park | 13. Big Miller Park |
| 4. Strathcona Park 3 | 9. Fred A. Moire Park | 14. McIntyre Park |
| 5. Light Horse Park | 10. End of Steel Park | 15. Strathcona Park 4 |

- Existing open spaces in the area are generally ill-suited for meaningful activation, hidden away, or viewed to only be for certain users
- Amount of open space is already significantly deficient on a hectares/1000 residents ratio, and ill-prepared to handle tourism and the heightened growth pressures anticipated for the nodal region



OSBA Public Survey Report (2021)



Lancaster, California



Doubling of pedestrian activity



*Over-Doubling of area revenue
9.53% increase of property values*



*50% less car crashes
85% less injury-causing crashes
75% less pedestrian crashes*

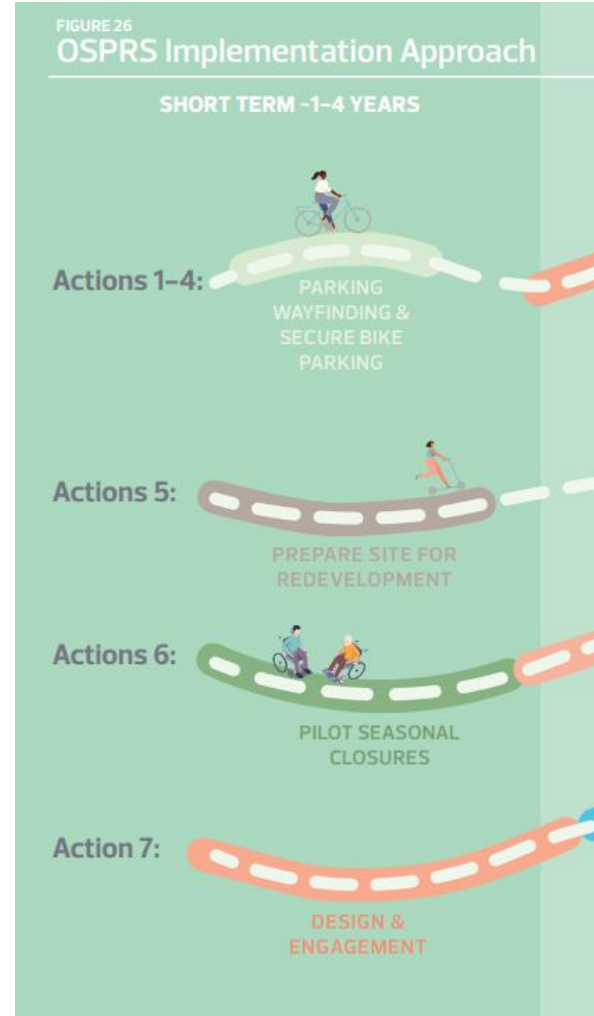


*\$11.2 million investment created:
~\$100 million private investment
~\$280 million total economic impact*



Actionable Items

- 1 Wayfinding
- 2 Pedestrianized Street Closures
- 3 Prepping for Future Actions



Thank You!

