

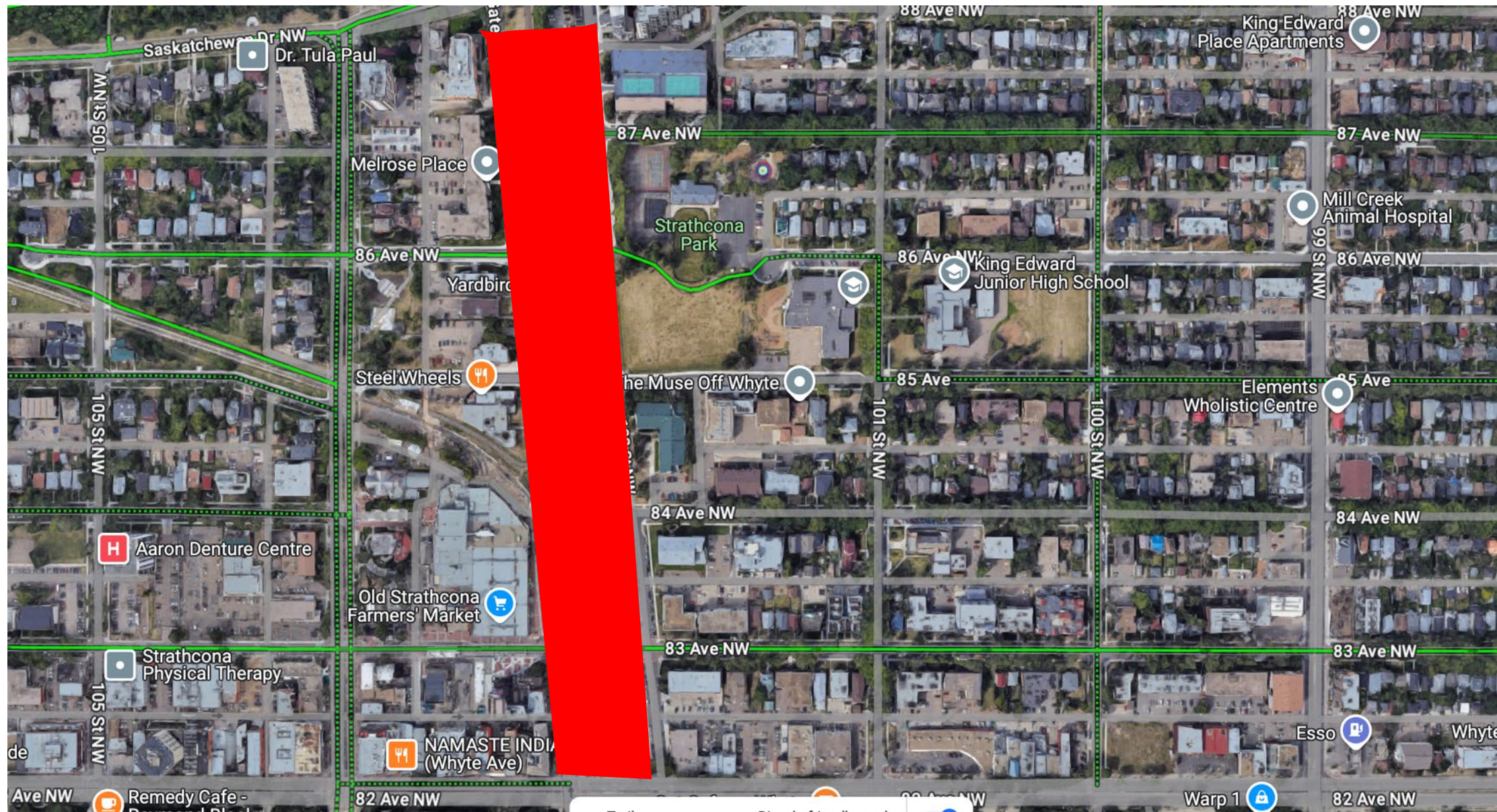
Conrad Nobert

- Strathcona Community Resident
- Farmers Market enthusiast
- Attendee of local theatres

2016 Census

Strathcona uses automobiles far less than the City at large.

Strathcona has significantly higher percentages of citizens who walk or cycle.





October 2007



← 8419 102 St NW
Edmonton, Alberta


Google Street View

Apr 2009 See latest date

April 2009



← 8419 102 St NW
Edmonton, Alberta

 Google Street View

Jun 2012 [See latest date](#)

June 2012



← 8419 102 St NW
Edmonton, Alberta
Google Street View
Jul 2014 See latest date

July 2014



June 2018



June 2018



July 2023 (20-30 people using the parking lot)

The Big Parking Parking Lot

- Dusty
- Depressing
- Empty!
- Dirty
- Ugly
- Hot – no trees
- A detriment to quality of life
- Makes walking unpleasant - a chore.



83 Avenue

- Most pictures online are from days when it is closed to cars!



Please support the Old Strathcona Public
Realm Strategy.