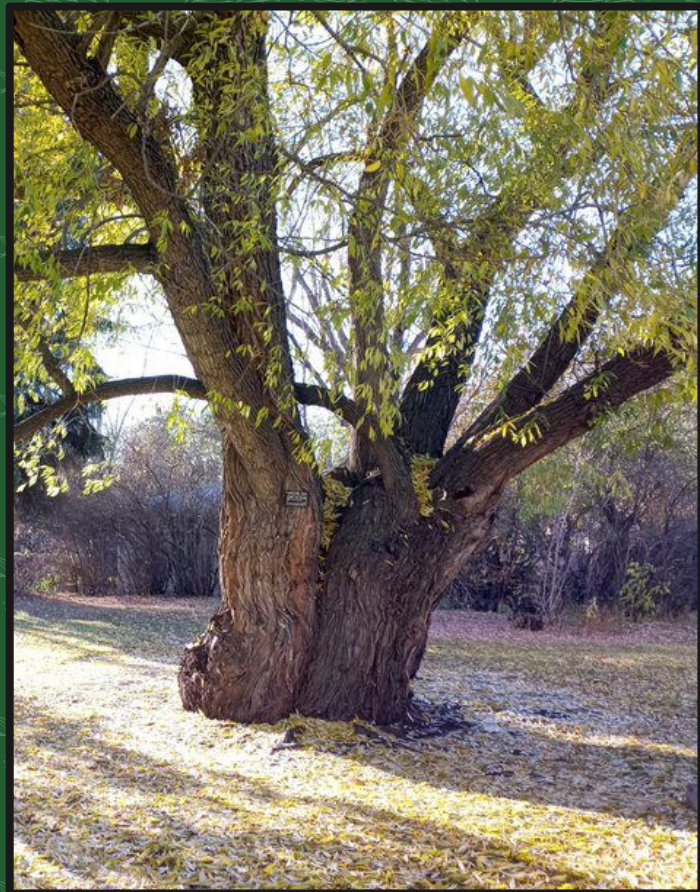


---



# Edmonton Urban Trees

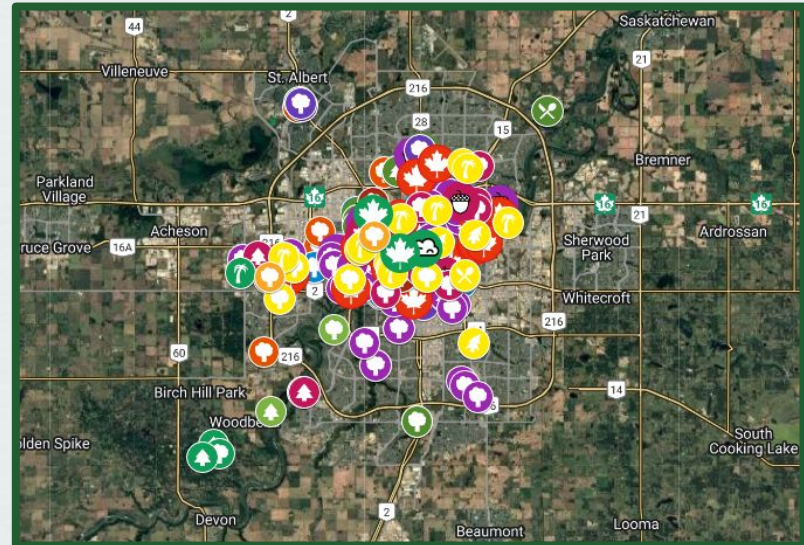
By Josh Kirsch





# Who am I?

- I am a grade 11 student
- Heritage Tree Enthusiast
- I created a Heritage Tree Map for our city with 250+ trees





# Why am I here?

## To show a different perspective



- My goal is to show a youth's perspective on this issue
- Advocate for others my age

## Share my passion



- Show why our urban forest needs protected
- Provide examples from inside our city



# Urban Trees in Edmonton

## Significance of these trees

- Many trees are well over 100 years old, and were planted by our city's earliest residents.
- Lots of our Heritage trees have spent decades growing to huge sizes!
- Mature trees often act as habitat trees - every tree matters!

# Windsor Park Willow



# Glenora Silver Maple



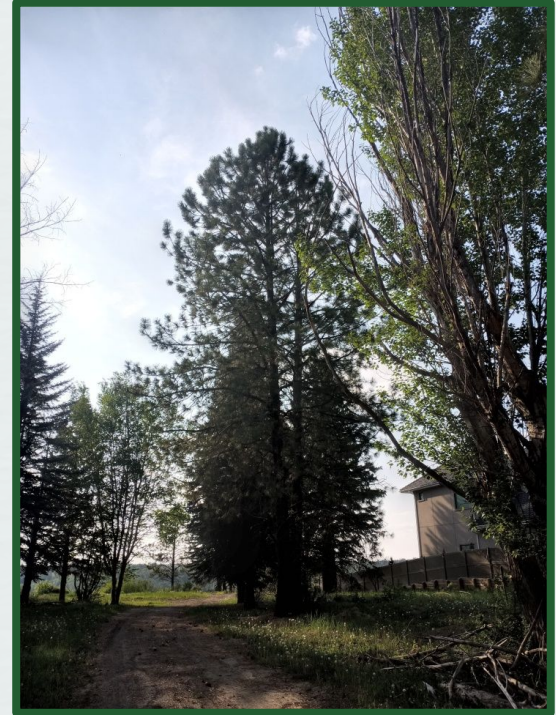


# Urban Trees in Edmonton

## Why should we protect them?

- Future generations will have the opportunity to enjoy these larger, more mature trees.
- Trees contribute so much to how communities look and feel
- They take decades to grow to mature heights and wide trunk sizes.

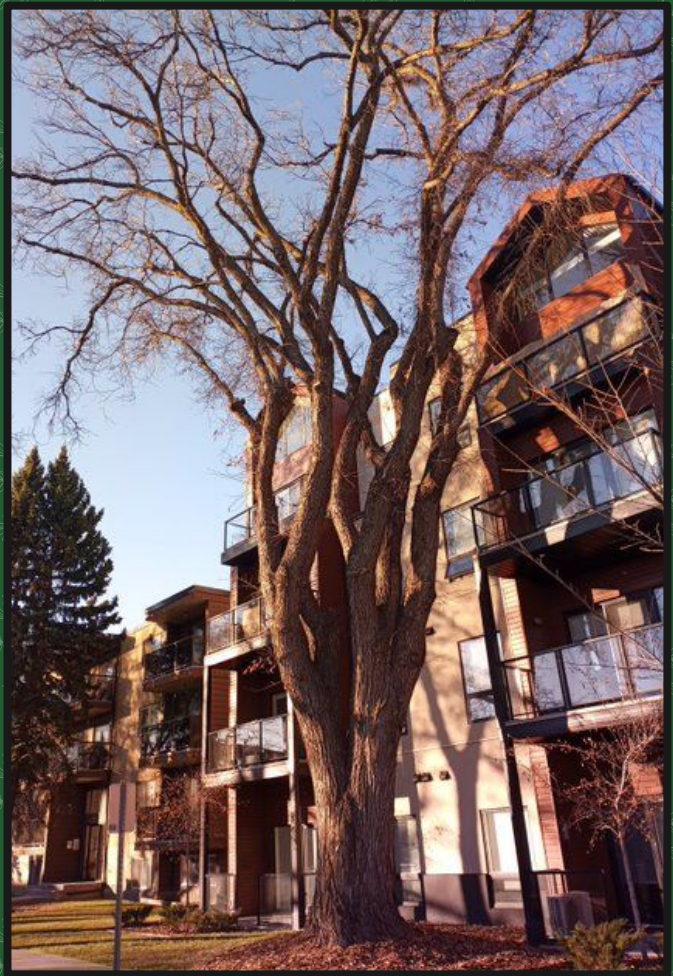
# “An empty lot”





# “An empty lot”





# Looking into the future Protecting trees on private land

- The creation of a bylaw would act as a compromise between both extreme modernization and preservation viewpoints
- It would allow future generations to enjoy the mature Heritage Trees in our city
- The following few slides show an example of this compromise already in our city

# “The Silver Maple”

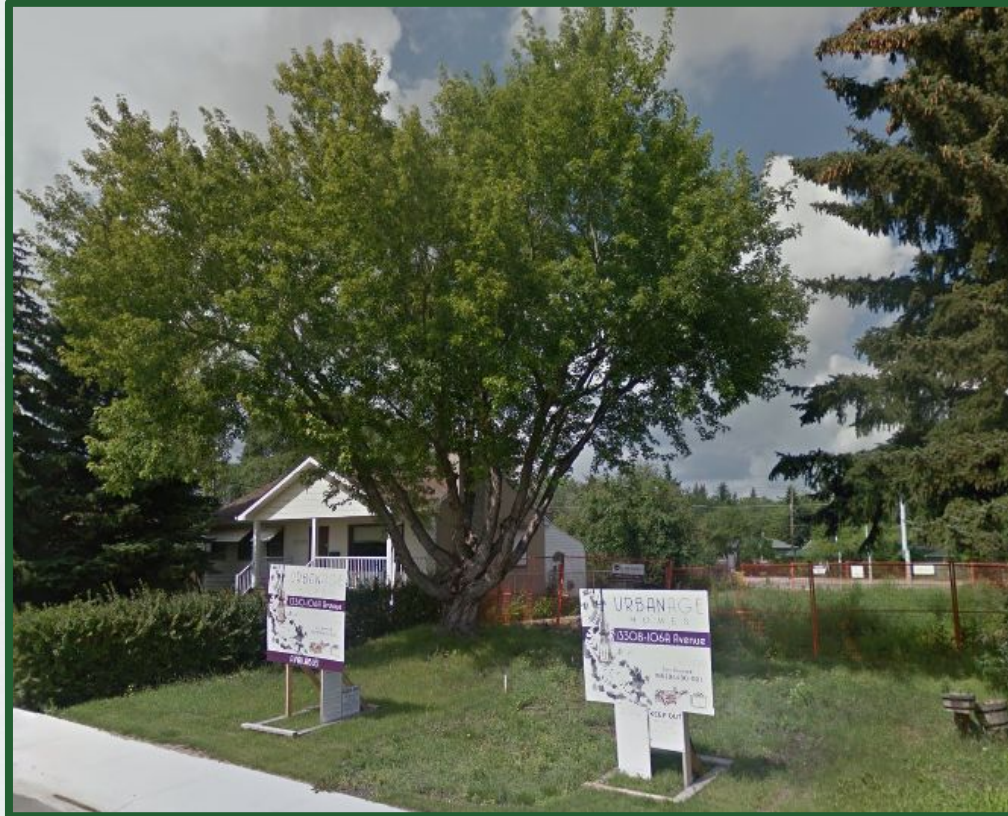


Photo from Google Maps

# “The Silver Maple”



# Thanks For Listening!

Do you have any questions?

[joshuadkirsch@gmail.com](mailto:joshuadkirsch@gmail.com)

**CREDITS:** This presentation template was created by [Slidesgo](#), and includes icons by [Flaticon](#). All unmarked photos were taken by me.

