



SAVE WEDGEWOOD COMMUNITY PARK

Wedgewood Heights Municipal Reserve Removal & Bylaw 20956

**City Council Public Hearing Agenda Items 3.13 & 3.14
Monday November 4, 2024**



**Welcome to
Wedgewood Park**



‘Historically, Treating Wedgewood the Same as All Other Surplus School Sites has been *Inappropriate*’



**‘Why Greenspace Matters and the Importance of
Programmable Greenspace’**

Benefits of Access to **Local** Greenspaces



Increased Physical Activity



Better Mental Health & Stress Management



Stronger Communities



Cleaner Air & Reduced Temperatures

Programmable Open Greenspace

- **Multi-functional**, open space within a park;
- that provides **benefits to everyone**, as opposed to a specific group; *and*
- that provides a high degree of **flexibility** in how the space is used, facilitating both **active and passive** recreational uses.





The City's Own Policies Emphasize the Importance of Programmable Open Park Space.

- Open Space Policy C594
- Urban Parks Management Plan (UPMP)
- Breathe: Edmonton's Green Network Strategy



Lessard Drive N

water feature

DONSDALE

basketball court

asphalt trail

playground & gazebo

FD

U7/U9 soccer field

neighbourhood boundary

ravine access point

FD

PS

U11/U13 soccer field

tennis courts

PU

dry pond

Wedgewood Ravine

WEDGEWOOD HEIGHTS



‘Preserving Wedgewood Community Park Aligns with Breathe: Edmonton’s Green Network Strategy’

Wedgewood Park & the 15-min City Concept





ECOLOGY



Water Management

Open spaces have the capacity to handle a significant amount of stormwater, as well as provide water storage, treatment, and purification for the city, reducing the impact of urban areas on water quality and quantity in the North Saskatchewan River and its tributaries.



Climate Regulation

Open spaces provide a myriad of benefits for the urban, built environment, including mitigating the urban heat island effect, stabilizing micro-climates, reducing wind tunnels, improving air quality, and mitigating climate change.



Biodiversity

Not limited to just preservation and conservation lands, many types of open space provide habitats for plants and animals that can help ensure biodiversity and wildlife connectivity. Effective and appropriate management and regulation of these spaces is crucial to integration with other open space functions.



CELEBRATION



Aesthetic Value

Welcoming spaces with attractive design, natural scenery and public art are place-makers, attracting and retaining people. Proper maintenance, colourful vegetation, and protection for unique views can promote aesthetic appeal.



Community Building

Open spaces make cities. They act as gathering spaces – anchors – that facilitate social interactions and providing space for programming such as community events (i.e. farmers markets, art fairs). Open spaces created in partnership with the local community foster a sense of community identity and ownership.



Public Safety

Trees and open spaces can contribute to public safety by creating a vibrant public realm, providing transitions between land uses where otherwise conflicts might occur (such as noise), and serving as a traffic calming devices. Well-designed open space can help create safer streets for pedestrians and drivers.



Heritage

Open spaces can be effectively used to highlight the cultural and historical significance of a site, a feature, or the city's heritage in general. Cultural expression in the form of public art often finds a home in the green network.



Destination & Tourism

Open spaces not only serve as gathering spaces for a neighbourhood or community, but can also function as a destination, a draw for the larger area whether the region, province, or nation.



WELLNESS



Recreation

Open spaces function as recreation spaces that accommodate sport facilities, as well as outdoor recreation, such as running, cycling, field sports/activities, walking, etc. High quality recreation spaces that are easily accessible and accommodate a range of different activities are crucial to promoting healthy living.



Active Transportation

The inclusion of well-connected, high quality trails and pathways within the open space network is key to promoting and encouraging active transportation modes, improving residents' health, improving overall mobility, reducing carbon emissions, and alleviating general demand on vehicular transportation networks.



Mental Health & Wellbeing

An important function of open space is the role of spaces in providing calm and therapy, by reducing stress and providing opportunities for the disabled or elderly to engage in therapeutic activities, such as gardening. Spending time in open spaces can foster a connection with nature that promotes spiritual fulfillment.



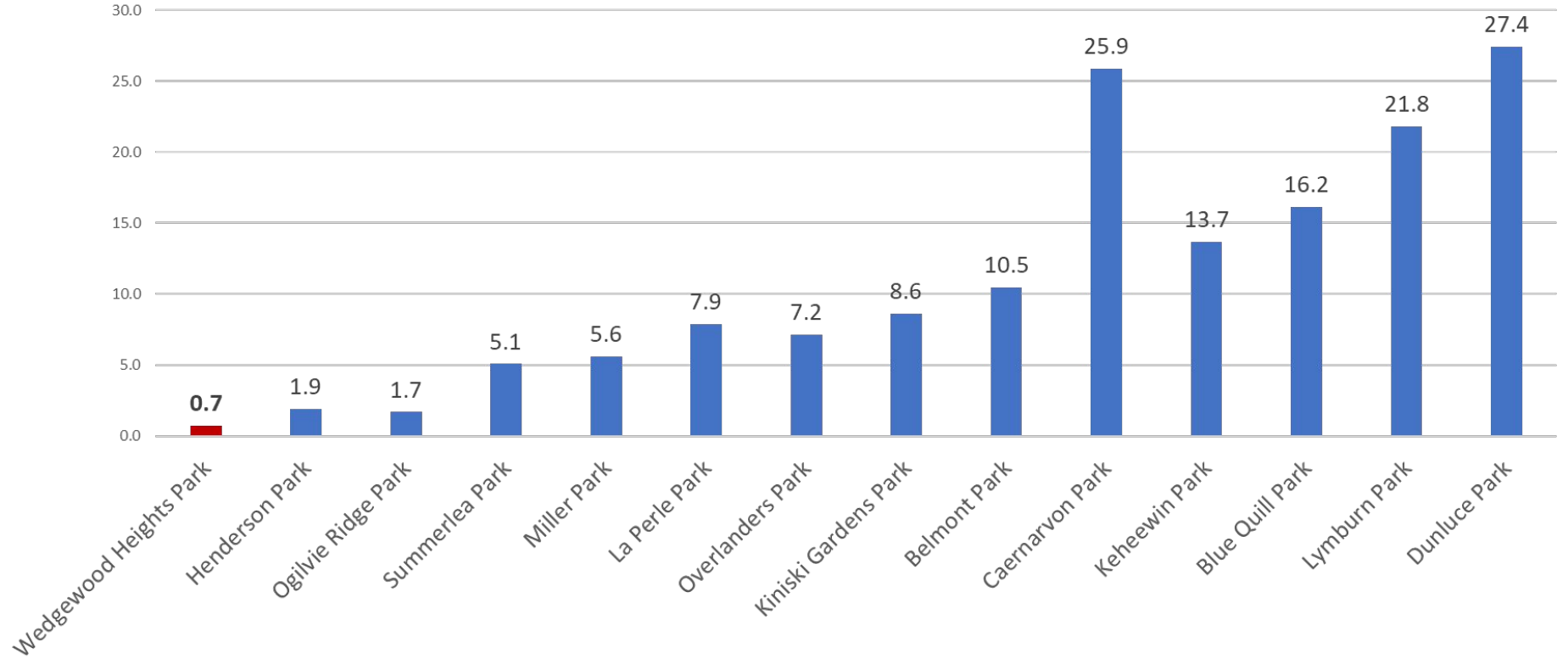
Learn & Play

Nature provides unique opportunities for people of all ages to learn (about environmental processes and cultural and historical heritage) through a variety of programming or free form play. Open spaces and nature are also integral to the mental and physical development of children.

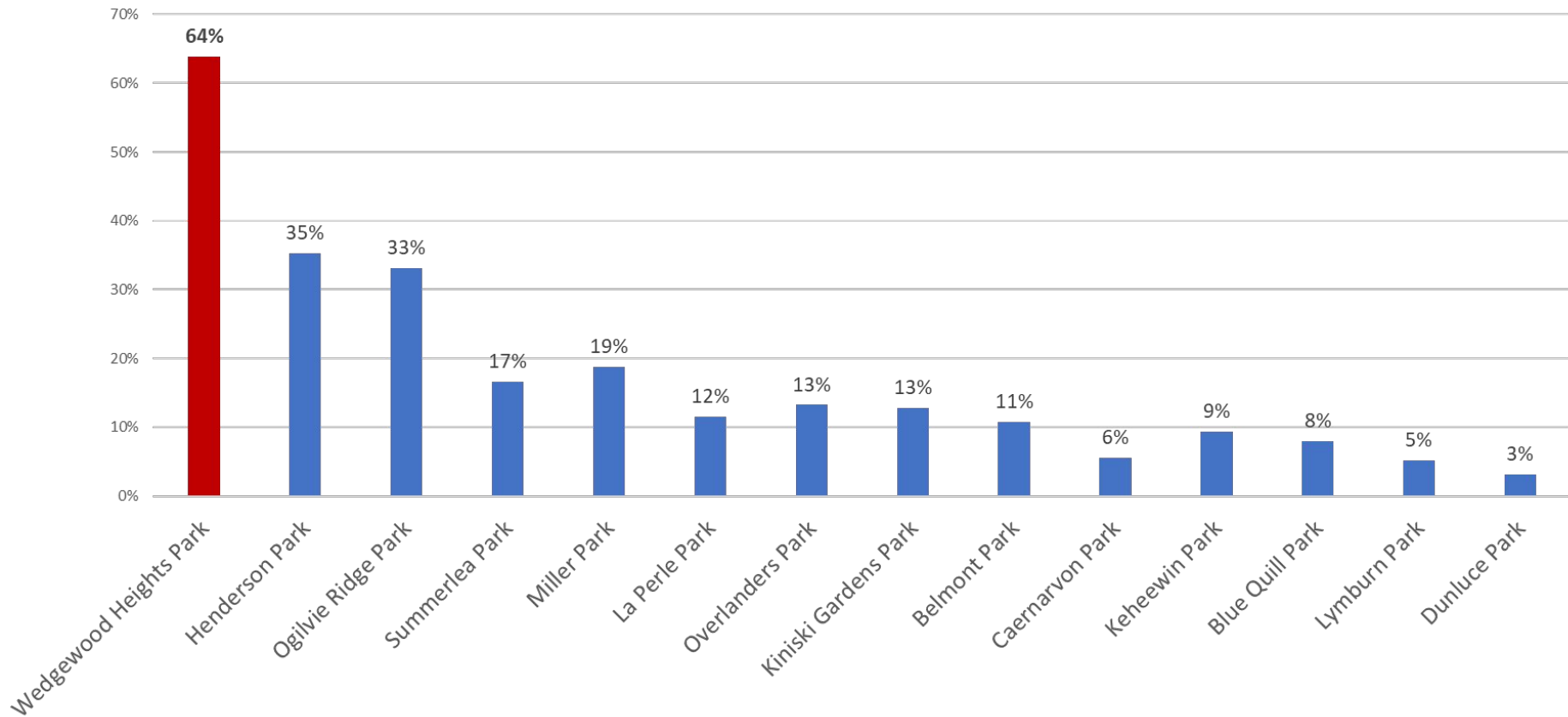


‘Wedgewood Stands to Lose an Inordinate Amount of Programmable Open Park Space’

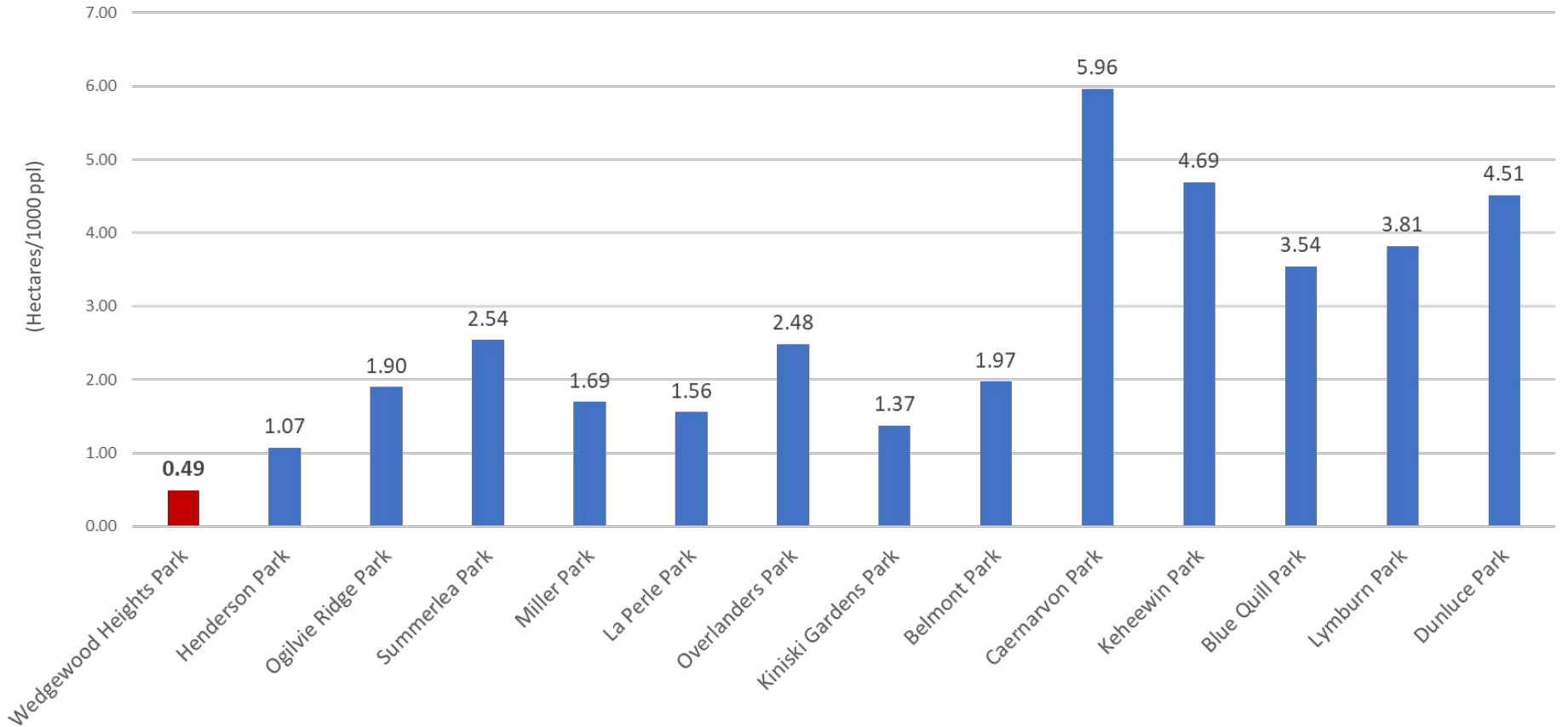
REMAINING PROGRAMMABLE OPEN SPACE (Hectares, Post SSS Development)



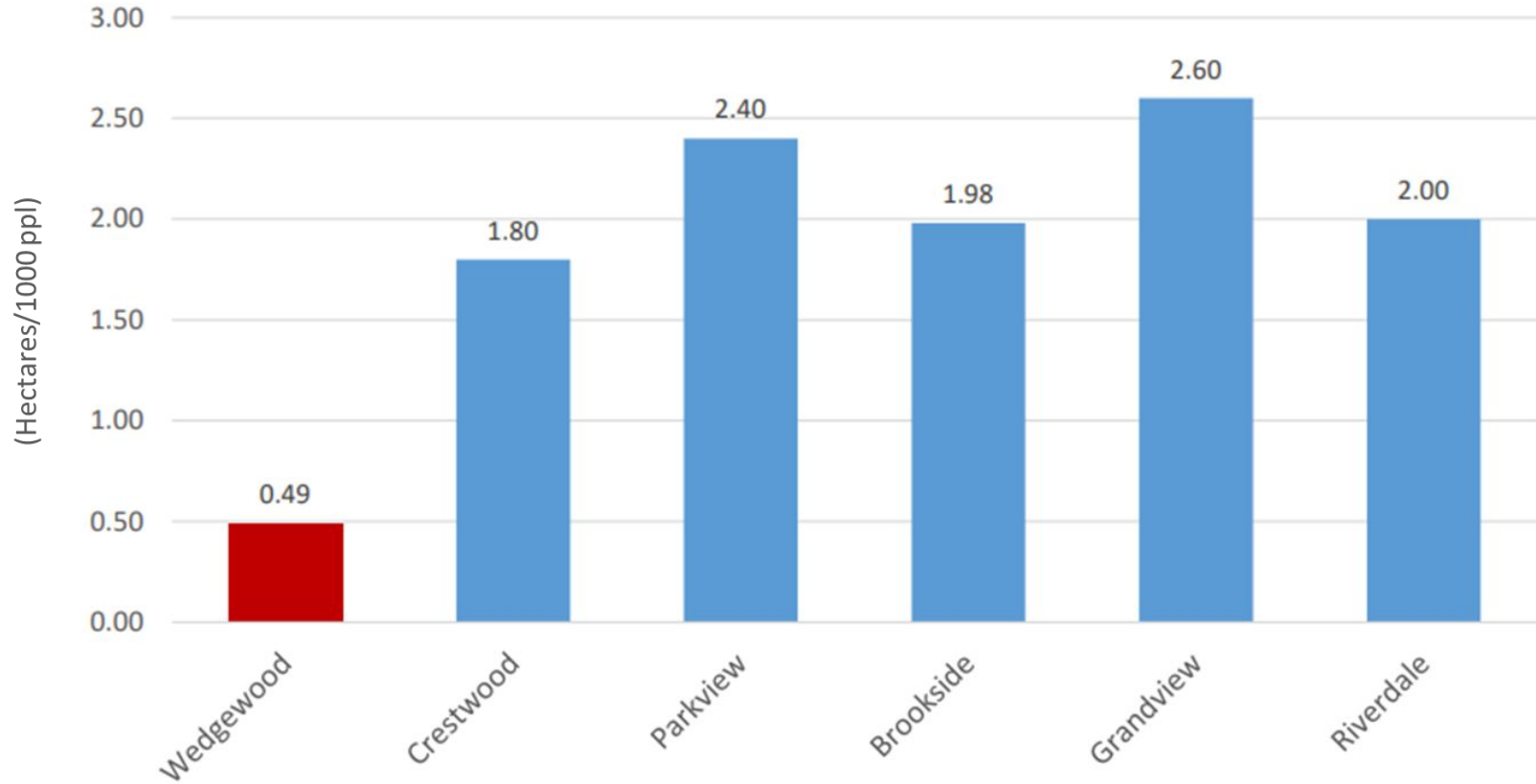
REDUCTION IN PROGRAMMABLE OPEN SPACE (Percentage, Post SSS Development)



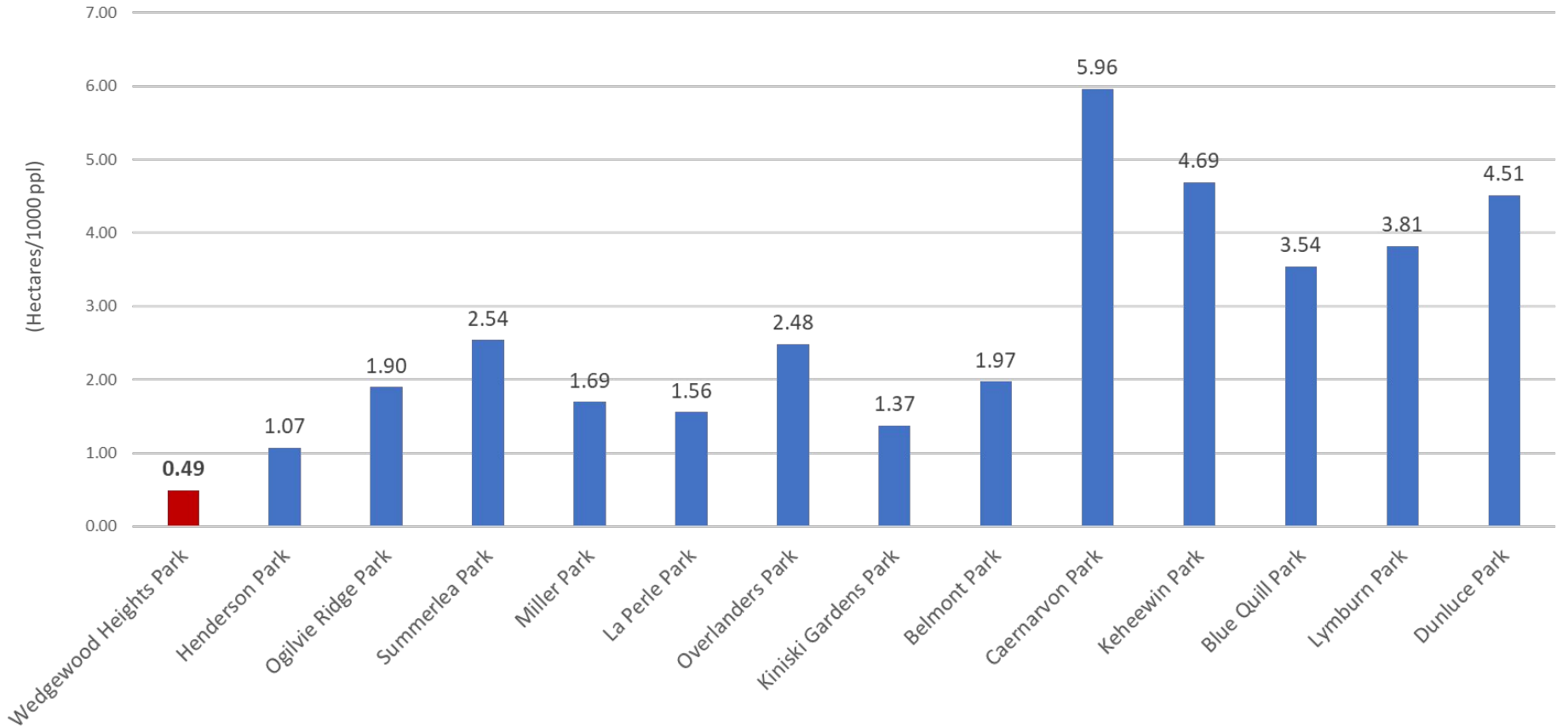
PROGRAMMABLE OPEN SPACE TO POPULATION RATIO in SSS NEIGHBOURHOODS (Hectares/1000 ppl, Post Development)



**PROGRAMMABLE OPEN SPACE TO POPULATION RATIO
in COMPARABLE NEIGHBOURHOODS
(Hectares/1000 ppl)**



PROGRAMMABLE OPEN SPACE TO POPULATION RATIO in SSS NEIGHBOURHOODS (Hectares/1000 ppl, Post Development)





**‘Administration’s High-Level Review of Open Space
Neglects to Objectively Assess the Effects of the
Removal of Programmable Open Park Space’**



RM h16/MR

Wedgewood
Heights Park

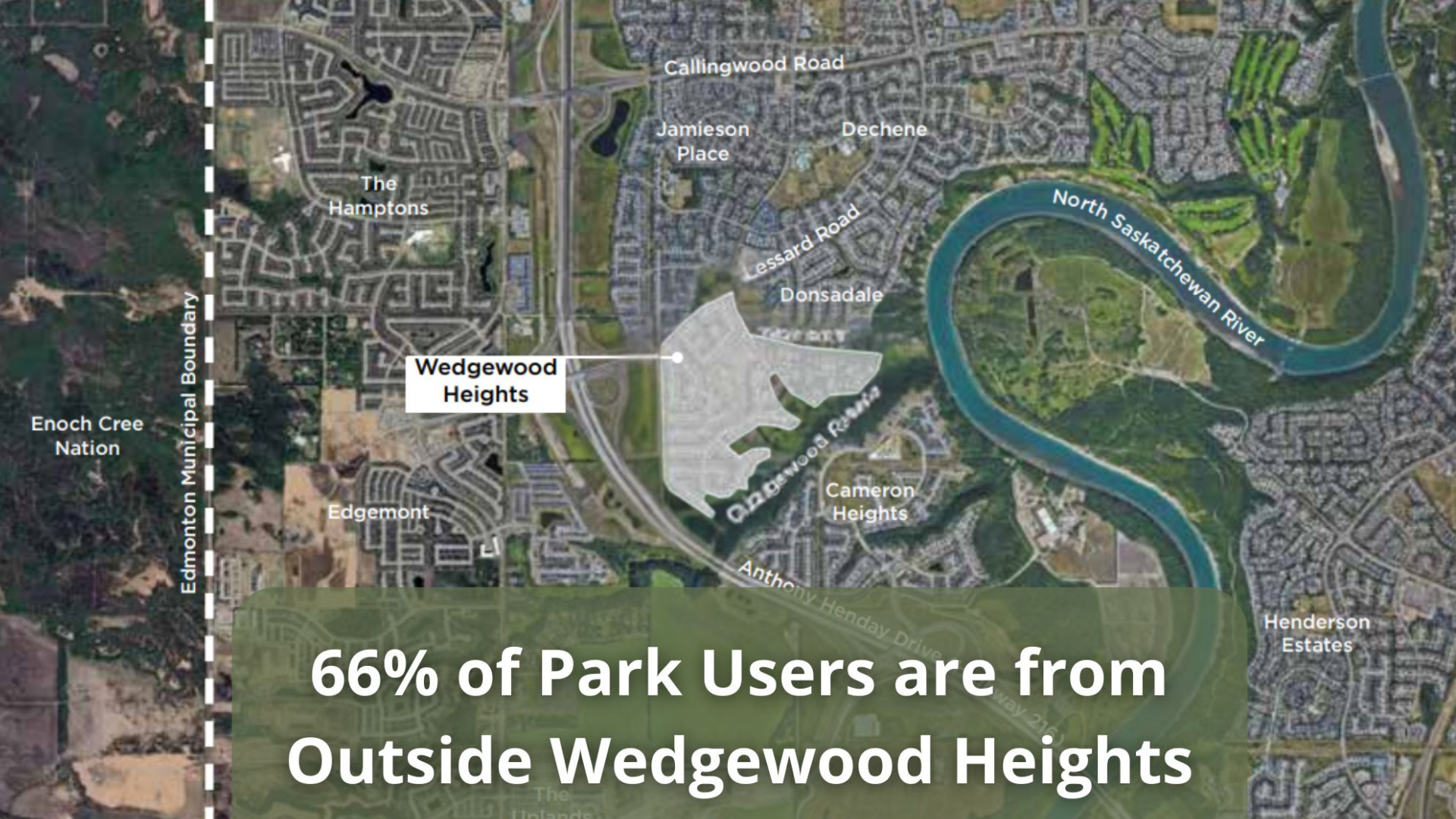
PS

PS

PU



‘Administration’s High-Level Review of the Wedgewood SSS *Neglects* to Consider the Park’s Current Community Needs and Future Park Usage’



Edmonton Municipal Boundary

Enoch Cree Nation

The Hamptons

Callingwood Road

Jamieson Place

Dechene

Lessard Road

Donsadale

Wedgewood Heights

North Saskatchewan River

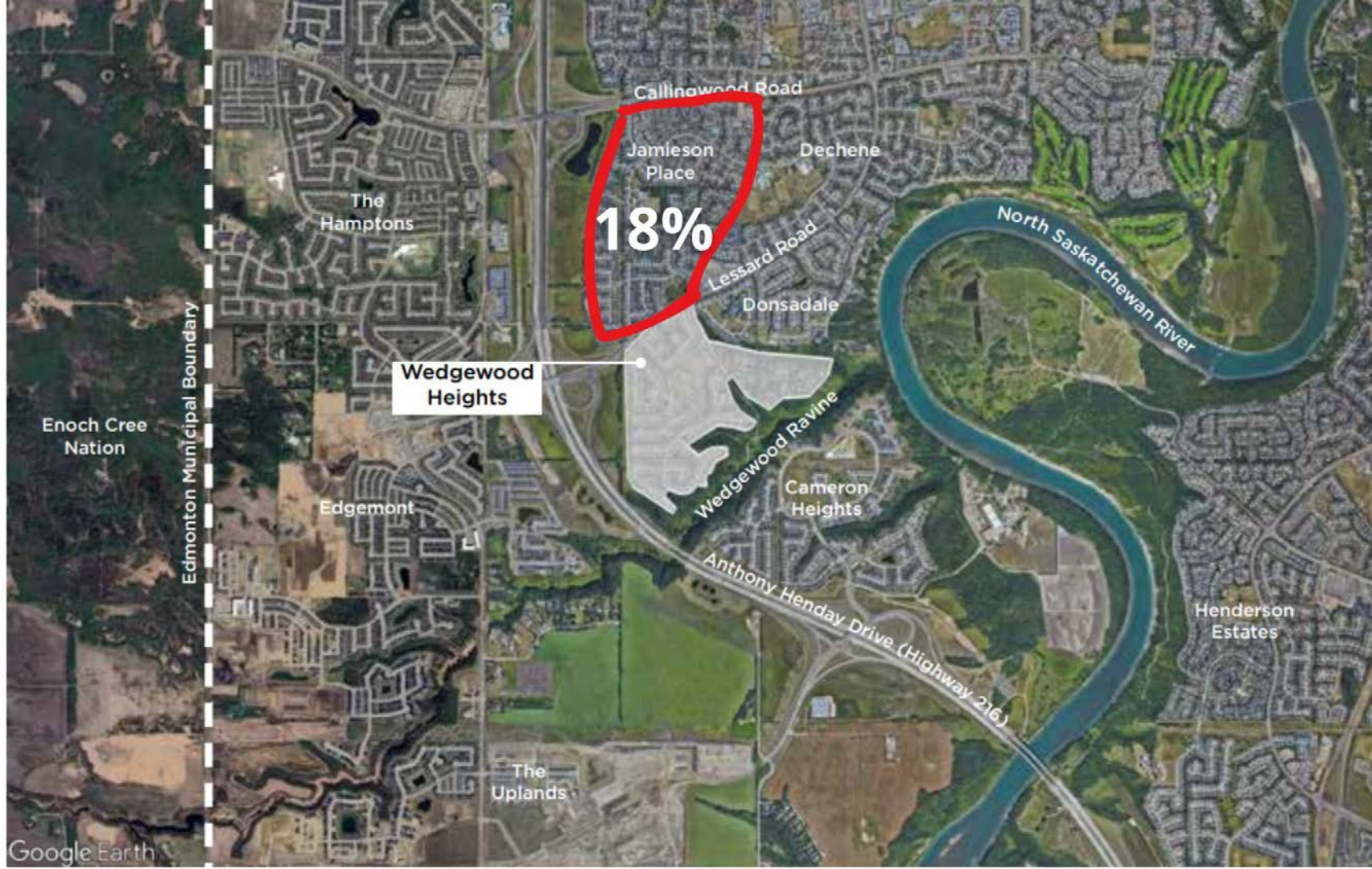
Edgemont

Cameron Heights

Henderson Estates

Anthony Henday Drive

66% of Park Users are from Outside Wedgewood Heights



18%

Callinwood Road

Jamieson Place

Dechene

The Hamptons

Lessard Road

Donsdale

North Saskatchewan River

Wedgewood Heights

Wedgewood Ravine

Cameron Heights

Enoch Cree Nation

Edgemont

Anthony Henday Drive (Highway 216)

Henderson Estates

The Uplands



Callingwood Road

Jamieson Place

Dechene

The Hamptons

7%

Innes Road

Donsadale

North Saskatchewan River

Wedgewood Heights

Enoch Cree Nation

Edmonton Municipal Boundary

Edgemont

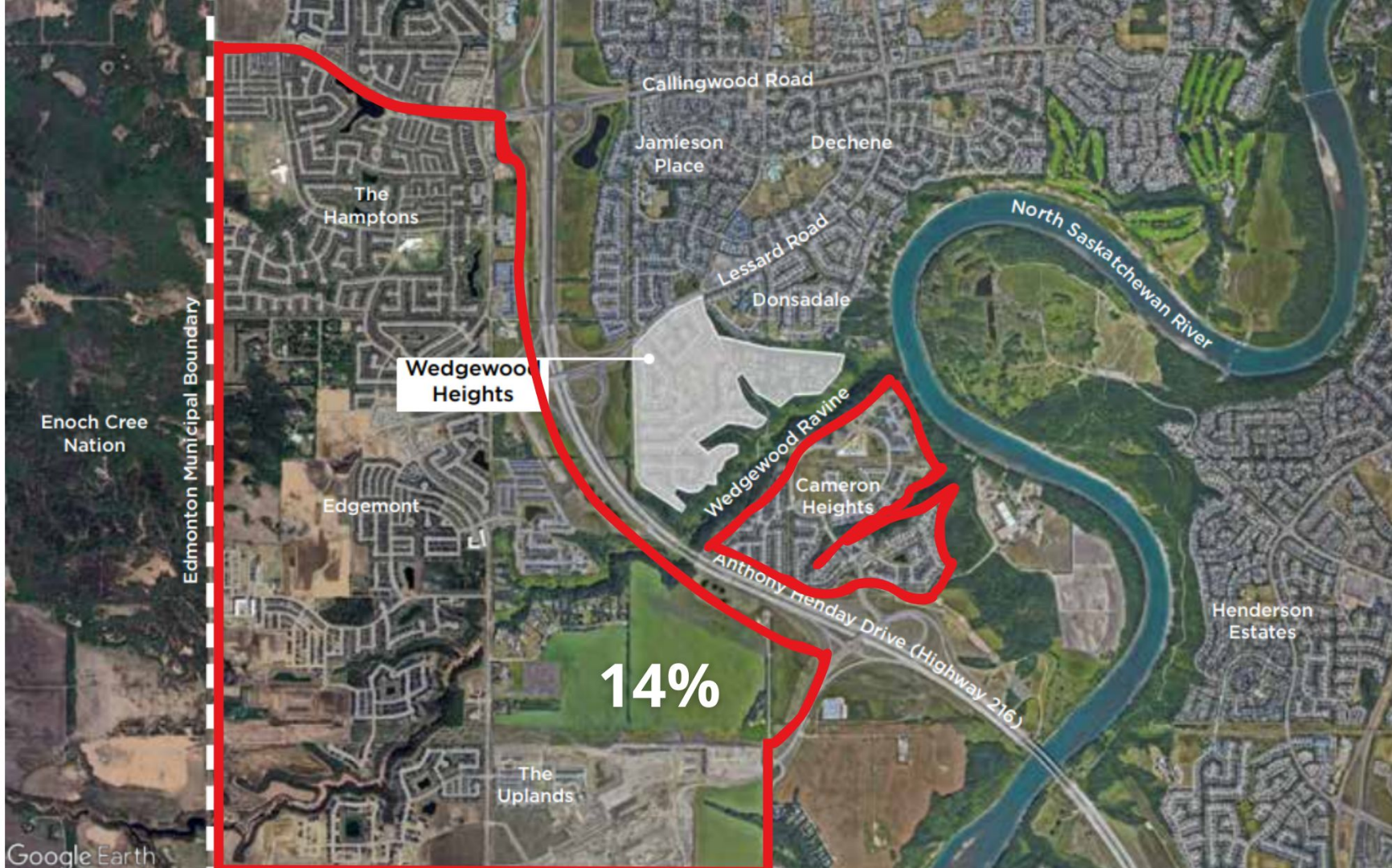
Wedgewood Ravine

Cameron Heights

Anthony Henday Drive (Highway 216)

Henderson Estates

The Uplands



Edmonton Municipal Boundary

Enoch Cree Nation

The Hamptons

Callingwood Road

Jamieson Place

Dechene

Lessard Road

Donsadale

Wedgewood Heights

Wedgewood Ravine

Cameron Heights

North Saskatchewan River

Edgemont

Anthony Henday Drive (Highway 216)

Henderson Estates

14%

The Uplands

Google Earth

Multi-Unit Proposed Development



Touchmark Proposed Development



Update image, remove
34%



Edmonton Municipal Boundary

Wedgewood Heights

34%

Callingwood Road

Jamieson Place

Dechene

The Hamptons

Lessard Road

Donsdale

North Saskatchewan River

Edgemont

Wedgewood Ravine

Cameron Heights

Henderson Estates

The Uplands

Anthony Henday Drive (Highway 216)

Google Earth

Enoch Cree Nation



‘The Loss of Programmable Open Park Space in Wedgewood Will Have *Significant Adverse Impacts*’



Wedgewood Heights Sports Fields

184 Street - 43 Avenue

6/7/2024

Edmonton



Wedgewood Heights Sports Fields

184 Street - 43 Avenue

6/7/2024











SAVE
WEDGEWOOD
PARK
Your Voice
Matters!

DONATE FACEBOOK



WedgewoodField@gmail.com





**The City has Not Demonstrated that the Wedgewood
Surplus School Site is Not Needed as
*Municipal Reserve.***

1. The conversion of surplus land **must** be supported by a ***community needs assessment***.
2. The proposed development site was **not** originally intended for a ***school*** building.



‘Other Conditions for Appropriating Municipal Reserve in Wedgewood Have Not Been Met’



‘Due Diligence Does Not Appear to Have Been Performed to Determine the Technical and Financial Viability of the Proposed Development’



c. 200 UNITS

c. 280 UNITS

RECONSTRUCT
INTERSECTION

ADD LEFT
TURN LANE

c. 185 UNITS



'Better, more Suitable Housing Alternatives Exist to Developing in Wedgewood Park – and Should Be Investigated Before Permanently Disposing of Wedgewood's Municipal Reserve Land'



Possible Development Area



Callingwood Road

Jamieson Place

Dechene

The Hamptons

North Saskatchewan River

Lessard Road

Donsadale

Wedgewood Heights

Wedgewood Ravine

Cameron Heights

Edgemont

Anthony Henday Drive (Highway 216)

Henderson Estates

Enoch Cree Nation

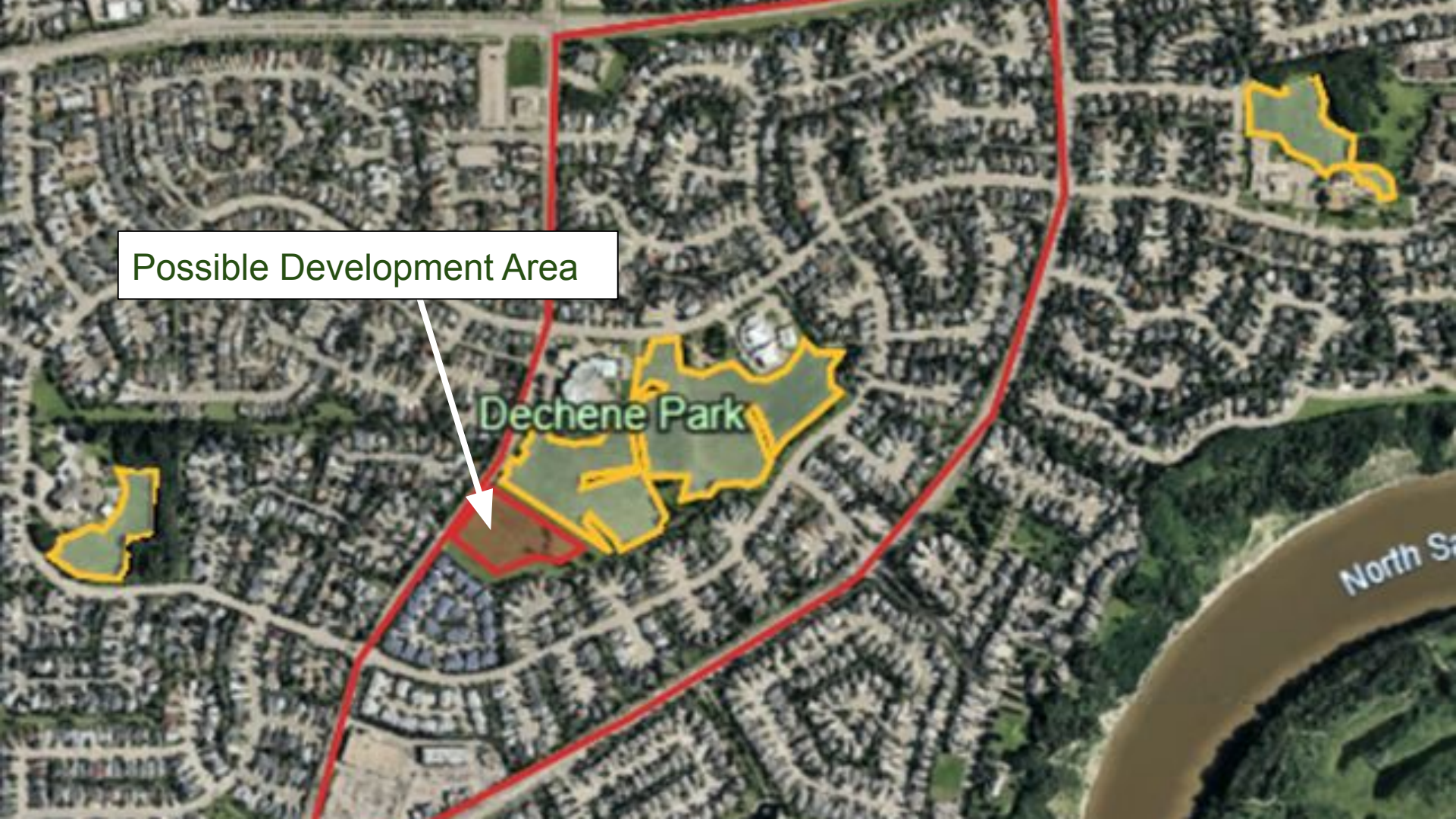
Edmonton Municipal Boundary

The Uplands

Possible Development Area

Dechene Park

North Sa



“Green spaces are a renowned and
iconic features of Alberta’s Capital City”

- *Breathe: Edmonton’s Green Network Strategy*



THANK YOU