

City Operations Parks and Roads Services

Edmonton

CO01775 102 Avenue Operation Evaluation

Urban Planning Committee - November 26, 2024

Caitlin Zerebeski, Branch Manager, Parks and Roads Services




Jessica Lamarre, Director, Safe Mobility

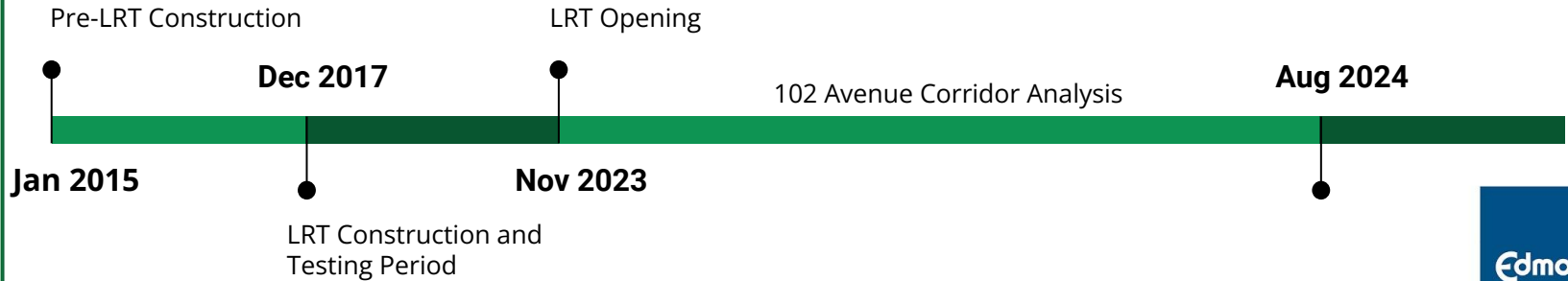
Tazul Islam, General Supervisor, Safe Mobility Engineering

102 Avenue Redesign



102 Avenue Evaluation

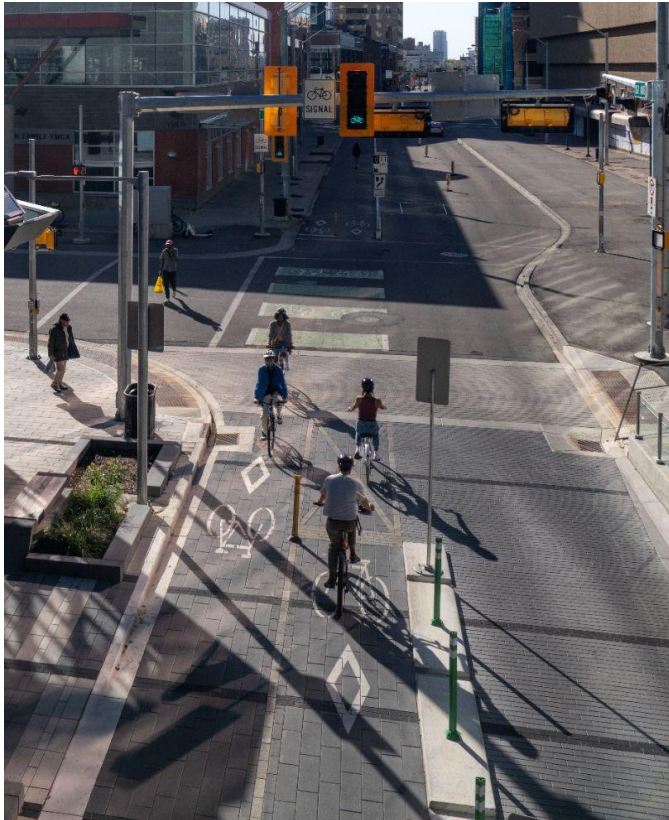
Corridor Analysis		
Safety Analysis 	Usage by modes 	Community Insight 



102 Avenue Mode Use

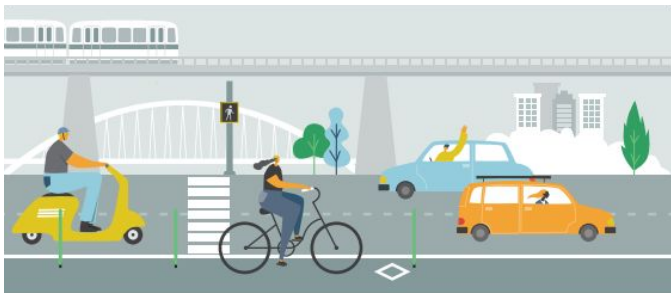
	Daily Volume per Intersection <i>(102 Ave and 99-102 St)</i>	Change Compared to Pre-Construction <i>(2015-2017)</i>
Vehicles	463 - 777	□ 90%
Cyclists	655 - 1,104	N/A
Pedestrians	3,500 - 15,000	□ 6% (100 St intersection) □ 22% - 50% (other intersections)
LRT Boardings	2,054 - 2,760	N/A

102 Avenue Safety Analysis



- Reduced collisions
- Majority move safely through the corridor
- Non-compliance from 16% of total users
- Less than 2% of non-compliance resulted in a near miss
- Minimal vehicle non-compliance

Community Insights



Do you commute on **102 Avenue between 99 Street and 102 Street?**

We want to hear about your experiences walking, biking, rolling and driving since Valley Line Southeast LRT has opened!

Share your lived experiences, traffic safety concerns and suggestions for improvements by **June 24, 2024**.



Scan the QR code or visit
edmonton.ca/ValleyLineSoutheast
to take a short survey.

VISION
ZERO

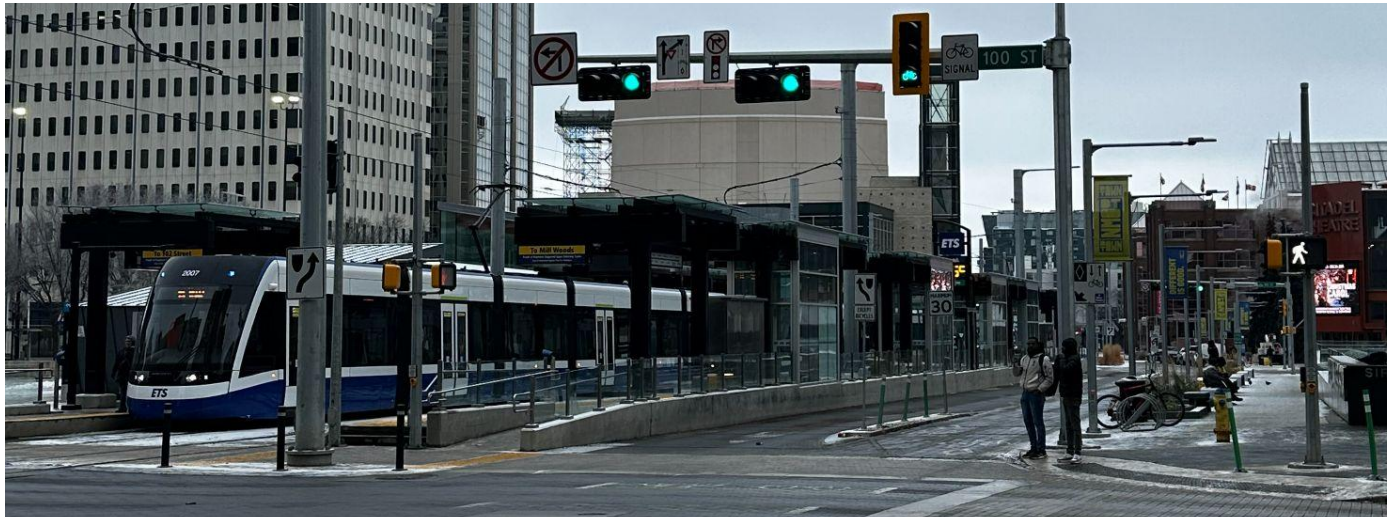


- 75% reported unsafe experiences or near misses
 - Traffic violations from all modes
 - Social disorder
- Misidentifying vehicle lane
- Suggested improvements
 - Vehicle/cyclist separation
 - Signage
 - Pedestrian experience

Edmonton

Findings and Next Steps

- Signal timing review
- Signage adjustments or additions
- Emerging technologies for cyclist detection
- Ongoing monitoring



Thank you. Questions?