

Bylaw 20922

A Bylaw to amend Bylaw 6288, as amended,
being the Pilot Sound Area Structure Plan

WHEREAS pursuant to the authority granted to it by the Planning Act on June 24, 1981, the Municipal Council of the City of Edmonton passed Bylaw 6288, as amended, being the Pilot Sound Area Structure Plan; and

WHEREAS Council found it desirable from time to time to amend Bylaw 6288, as amended, being Pilot Sound Area Structure Plan by adding new neighbourhoods; and

WHEREAS Council considers it desirable to further amend Bylaw 6288, as amended, the Pilot Sound Area Structure Plan;

NOW THEREFORE after due compliance with the relevant provisions of the Municipal Government Act RSA 2000, ch. M-26, as amended, the Municipal Council of the City of Edmonton duly assembled enacts as follows:

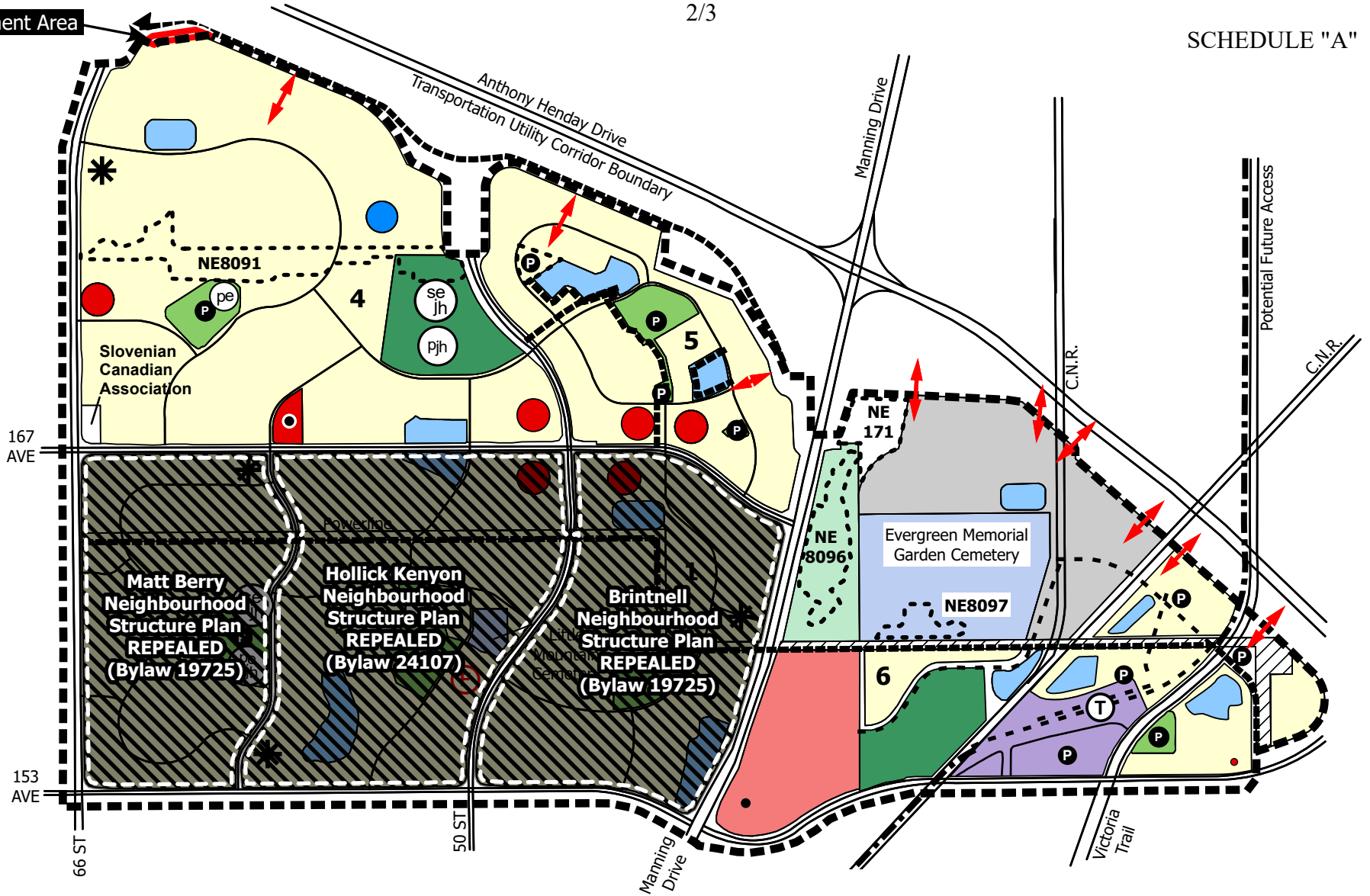
1. Bylaw 6288, as amended, the Pilot Sound Area Structure Plan, is hereby further amended as follows:
 - a. deleting the map “Bylaw 24108 Pilot Sound Area Structure Plan” and replacing it with the map “Bylaw 20922 Amendment to Pilot Sound Area Structure Plan”, attached hereto as Schedule “A” and deleting the “amendment area” indicator, and forming part of this bylaw; and
 - b. deleting “Figure 7 - Development Concept” and replacing it with “Figure 7 - Development Concept”, attached hereto as Schedule “B”, and forming part of this bylaw.

READ a first time this	day of	, A. D. 2024;
READ a second time this	day of	, A. D. 2024;
READ a third time this	day of	, A. D. 2024;
SIGNED and PASSED this	day of	, A. D. 2024.

THE CITY OF EDMONTON

MAYOR

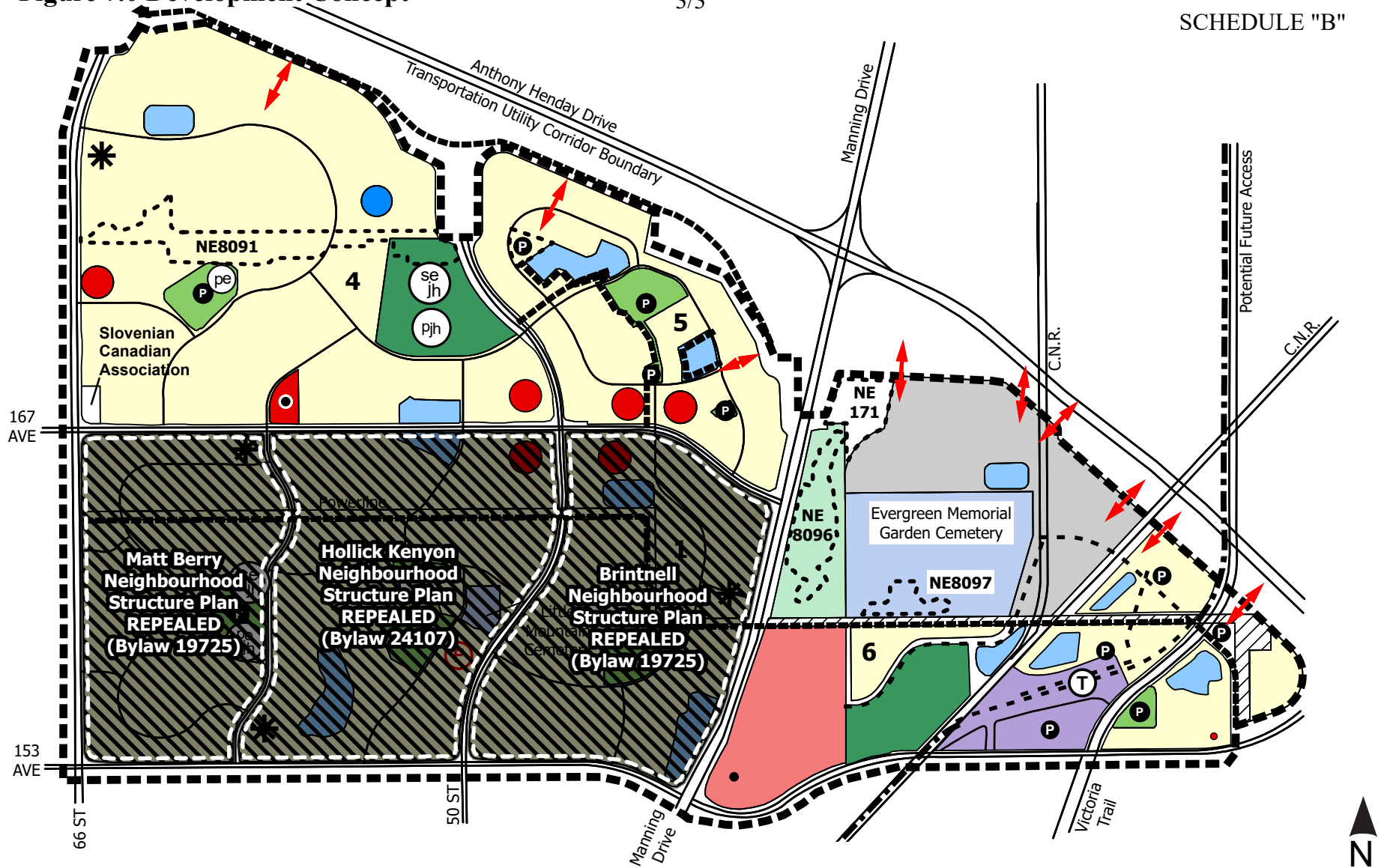
CITY CLERK



**BYLAW 20922
AMENDMENT TO
PILOT SOUND
Area Structure Plan
(as amended)**

- | | | |
|-----------------------------|--|----------------------------------|
| 2 Residential Neighbourhood | District Park | Fire Station |
| Community Commercial Site | Transit Oriented Development (Mixed Use) | Light Rail Transit (LRT) Station |
| Community Commercial (DC1) | Storm Retention Pond | Multi-Use Trail Access |
| Community Commercial (DC2) | Natural Areas | Light Rail Transit |
| Industrial | Natural Area Management Plan | Multi-Use Trail |
| Cemetery | Possible Future Storm Retention Pond | Possible Collector Roadway |
| Powerline Corridor | Community Commercial | ASP Boundary |
| School/Park Site | Convenience Commercial | Potential Pedestrian Overpass |
| | | Amendment Area |





- | | | |
|----------------------------|--|----------------------------------|
| Residential Neighbourhood | District Park | Fire Station |
| Community Commercial Site | Transit Oriented Development (Mixed Use) | Light Rail Transit (LRT) Station |
| Community Commercial (DC1) | Storm Retention Pond | Multi-Use Trail Access |
| Community Commercial (DC2) | Natural Areas | Light Rail Transit |
| Industrial | Natural Area Management Plan | Multi-Use Trail |
| Cemetery | Possible Future Storm Retention Pond | Possible Collector Roadway |
| Powerline Corridor | Community Commercial | ASP Boundary |
| School/Park Site | Convenience Commercial | Potential Pedestrian Overpass |