

Charter Bylaw 21043

A Charter Bylaw to amend Charter Bylaw 24008,  
being the West Henday District Plan

WHEREAS pursuant to the authority granted to it by the Municipal Government Act, as amended by the *City of Edmonton Charter, 2018 Regulation, AR 39/2018*, on October 2, 2024, the Municipal Council of the City of Edmonton passed Charter Bylaw 24014, being the West Henday District Plan; and

WHEREAS Council found it desirable from time to time to amend the Northwest District Plan; and

WHEREAS an application was received by Administration to amend the Northwest District Plan;

NOW THEREFORE after due compliance with the relevant provisions of the Municipal Government Act, RSA 2000, c. M-26, as amended, and as amended by the City of Edmonton Charter, 2018 Regulation, AR 39/2018, the Municipal Council of the City of Edmonton duly assembled enacts as follows:

1. That Charter Bylaw 24014, being the West Henday District Plan, is hereby amended as follows:

- a. Deleting the map “Map 4: Land Use Concept to 1.25 Million” and replacing it with the map “Map 4: Land Use Concept to 1.25 Million”, attached hereto as Schedule “A”, and forming part of this bylaw.

READ a first time this	day of	, A. D. 2025;
READ a second time this	day of	, A. D. 2025;
READ a third time this	day of	, A. D. 2025;
SIGNED and PASSED this	day of	, A. D. 2025.

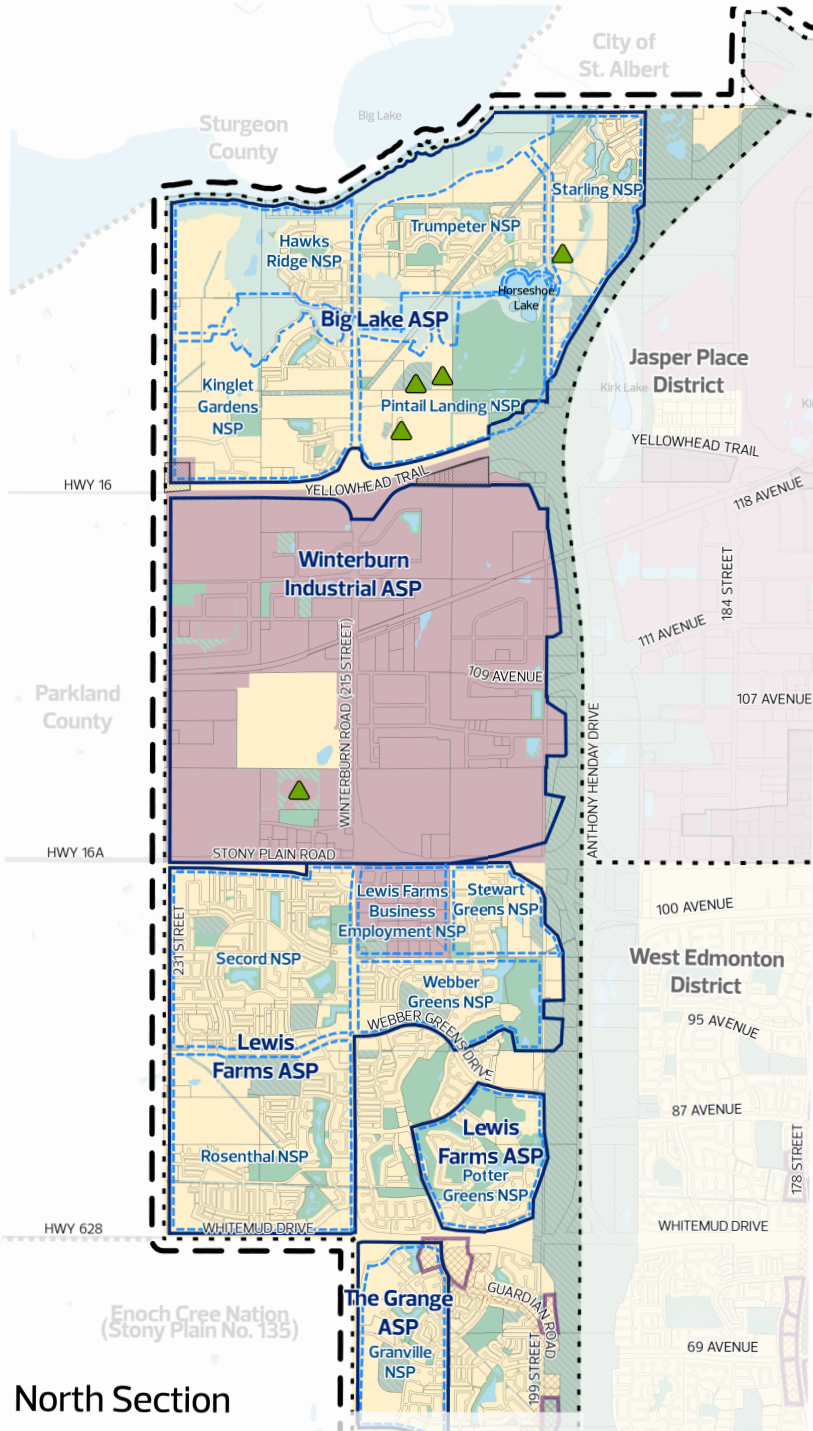
THE CITY OF EDMONTON

---

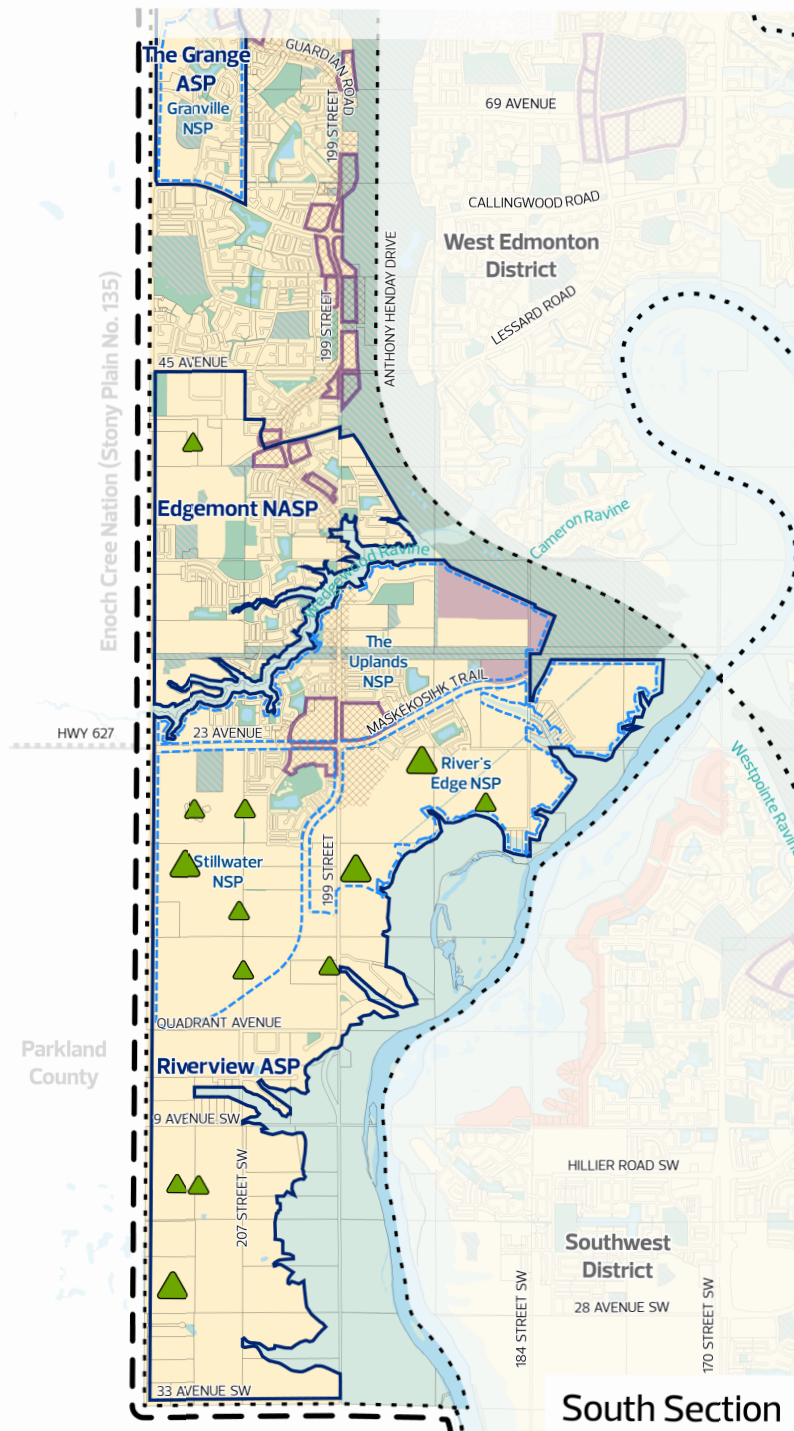
MAYOR

---

CITY CLERK



North Section



South Section

- General Information**
- Municipal Boundary
  - Adjacent Jurisdiction Boundary
  - District Plan Boundary
  - Plan in Effect - Area Structure Plan/Area Redevelopment Plan\*
  - Plan in Effect - Other\*
- General Land Use**
- Urban Mix
  - Commercial/Industrial Employment
  - Institutional Employment
  - Future Non-Residential Area
  - Open Space - Current
  - Urban Service
  - Agriculture
  - Waterbody
  - North Saskatchewan River Valley and Ravine System
- Planned Municipal Park\*\***
- Small (<3 ha)
  - Medium (3 ha - 10 ha)
  - Large (>10 ha)
- Development Areas**
- Node or Corridor Area
  - Non-Residential Intensification Area
- Design Influences**
- Large Site
  - Commercial Frontage

\*Plan in Effect boundaries on this map are conceptual. Consult the Plan in Effect for details.  
 \*\*Small Planned Municipal Park not shown for areas with Area Structure Plans in effect.