

ITEM 3.5
BYLAW 21038
STILLWATER

DEVELOPMENT
SERVICES
February 3, 2025



CONTEXT MAP



Enoch Cree Nation

Parkland County

Winterburn Rd NW

Maskekosihk Trail NW

Site

SWMF

The Uplands

ETS

199 St NW

20 Ave NW

19 Ave NW

ETS

Stillwater Blvd NW

ETS

SWMF

ETS

Comments (0)



CITY WEBPAGE
Oct 7, 2024



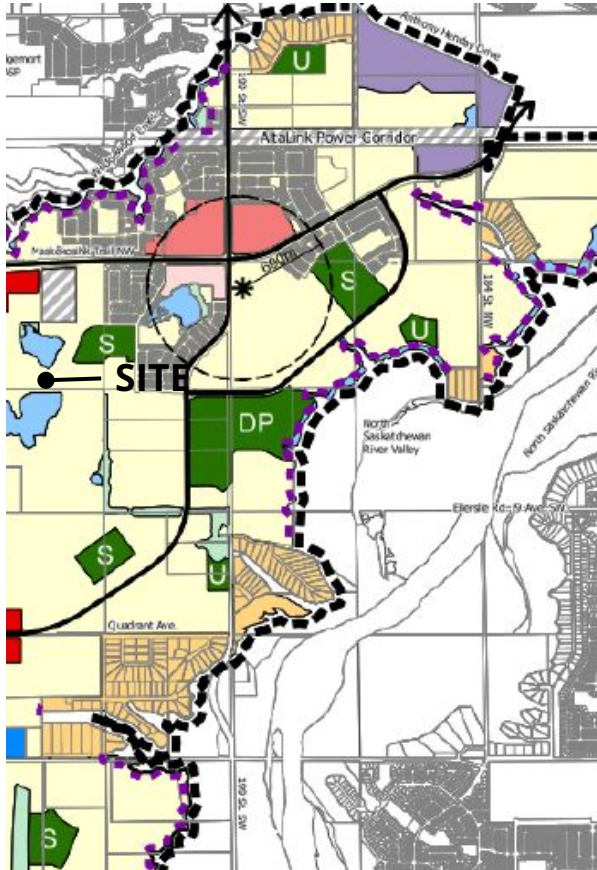
MAILED NOTICE
Nov 3, 2024



PUBLIC HEARING
NOTICE
Jan 9, 2025



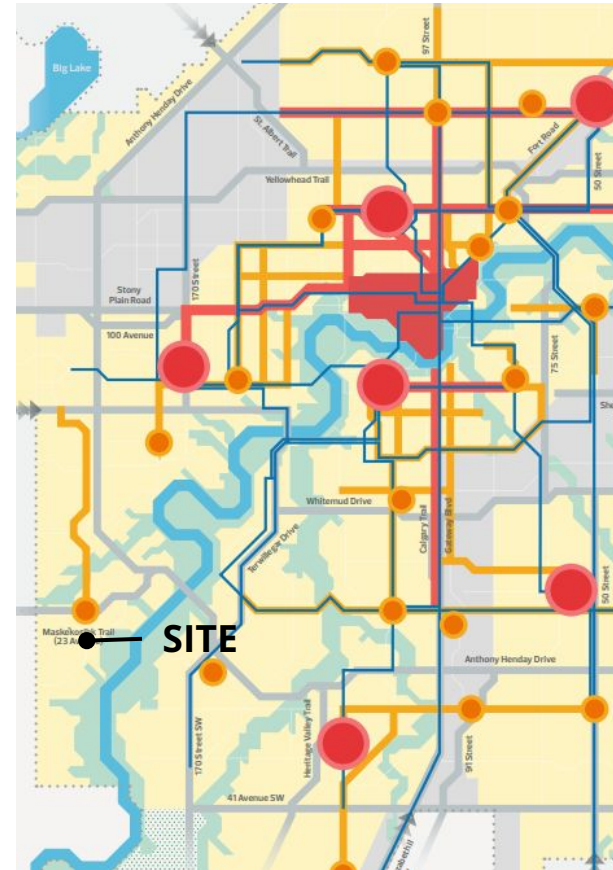
JOURNAL AD
Jan 17 & Jan 25,
2025



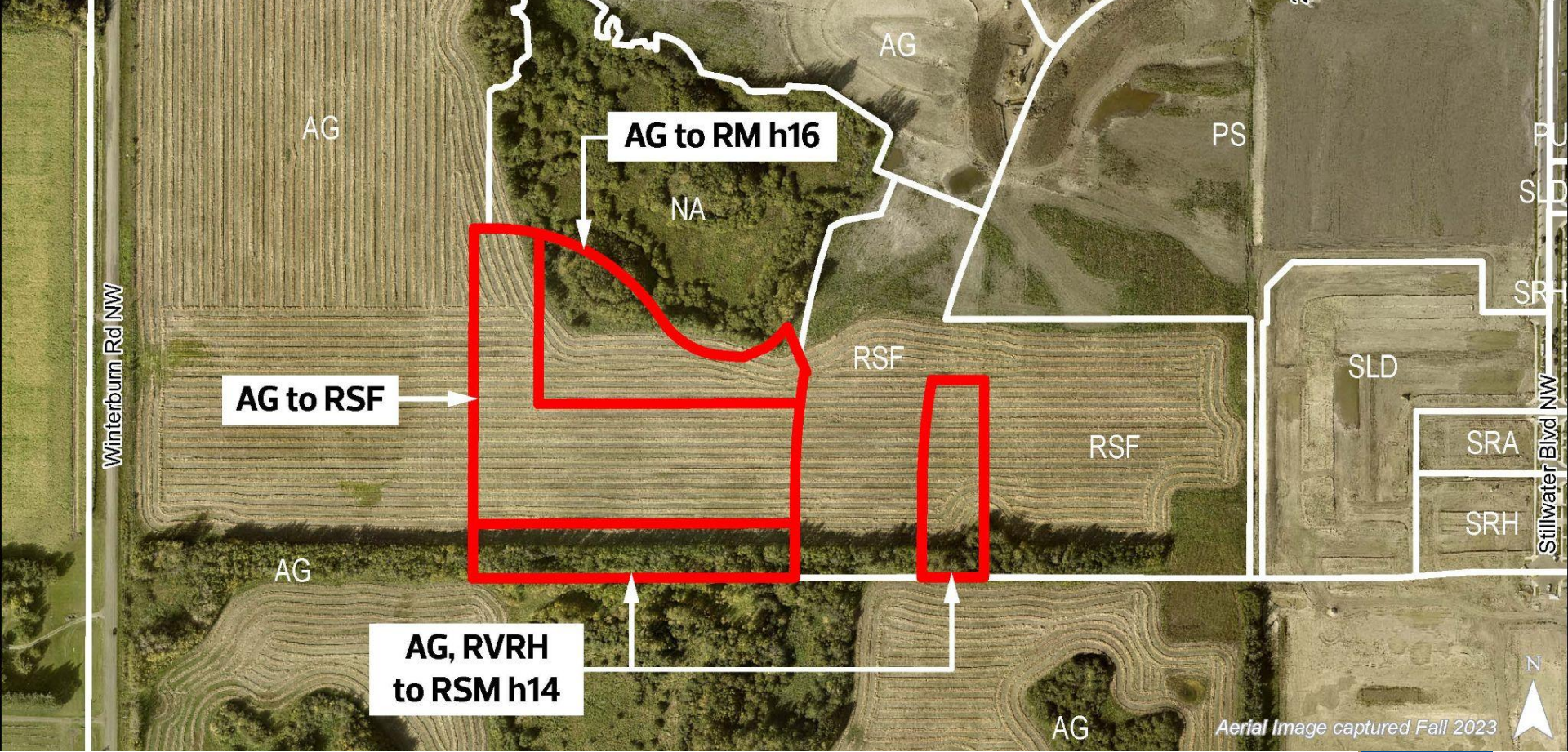
RIVERVIEW ASP



STILLWATER NSP



THE CITY PLAN



ADMINISTRATOR'S RECOMMENDATION: **APPROVAL**