



# Windrow Free and School Drop Off Zones

# Outline

- Definitions
- Snow and Ice Control Practices
- Alternatives to improve level of service

# School Drop Off Zones

**Drop Off Zone**



**Mother Teresa Elementary School  
105A Ave**

**Total : 333 schools**





# School Drop Off Zones

Loading Zone Only

No Parking from 7:00 a.m. or  
8:00 a.m. until 4:00 p.m.



# Windrow Free Zone



Mother Teresa Elementary School  
9008 105A Ave, Edmonton, AB

Temporary  
Windrow





# Windrow Free Zone

## Windrow Free Zones:

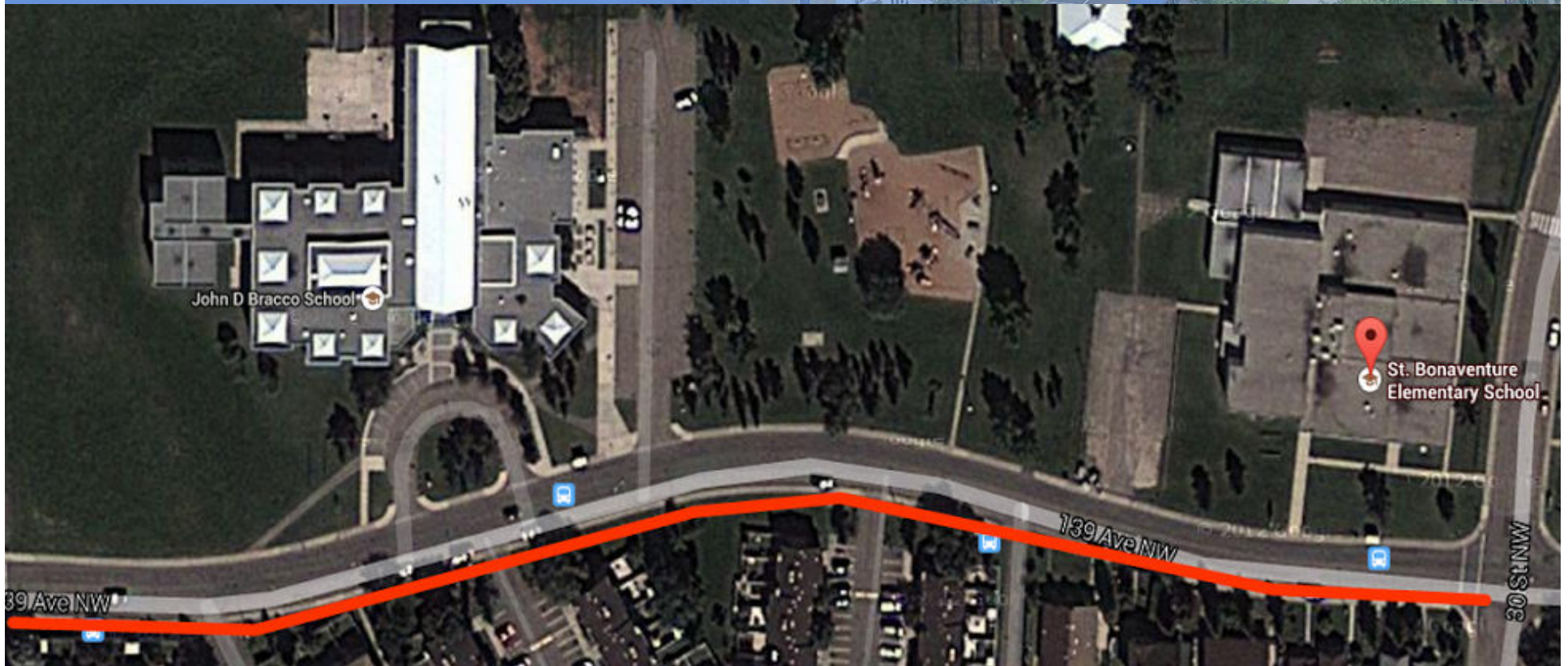
- cover larger area than Drop Off Zones
- Usually go from intersection to intersection of School frontage

**Riverdale School  
101 Ave NW**

TRANSPORTATION COMMITTEE | October 28, 2015



# Temporary Windrow Location St. Bonaventure School - 139 Ave



— Temporary Windrow Location Across Windrow Free Zone



# Windrow Removal Scenarios

<u>Scenario</u>	<u>Level of Service</u>	<u>Operation Length</u>	<u>Budget Increase</u>
1. Current	when resources are free	<b>5 days</b> (5 crews)	\$400,000 per snow removal event for all schools.*
2. Prioritized Start Time	Remove after first cycle of arterial & collector plowing	<b>5 days</b> (dedicated 5 crews)	Capital: \$2,000,000. Yearly operating increase of \$400,000 per snow removal event.
3. Prioritized Start Time (reduced operations length)	Remove after first cycle of arterial & collector plowing Removal takes up to 48 hours	<b>2 days</b> (dedicated 10 crews)	Capital: \$4,000,000. Yearly operating increase of \$800,000 per snow removal event.

\*Approx. \$1200 per removal event per school





# Questions?