



Integrated Infrastructure Services  
LRT Expansion and Renewal

Edmonton

# Valley Line West 2025 Roadway Construction Options and Impacts

Urban Planning Committee  
February 11, 2025

IIS02745

# Project Overview

- \$2.6 billion / 14 kilometres (downtown to Lewis Farms)
- 14 street-level stops & 2 elevated stations
- 2 new bridges (bridge over Groat Road; LRT bridge over Anthony Henday Drive)
- 2 new facilities (Gerry Wright OMF-B; Lewis Farms Storage Facility)
- Elevated guideway along 87 Avenue
- 46 new light rail vehicles



# Integrated Approach to Traffic Restrictions

- City departments work together to plan traffic restrictions
- Ensures a coordinated approach (balancing traffic flow with project needs)
- Ensures alternative routes are available and access for emergency services
- Traffic modelling is used to understand traffic diversions and flag changes in traffic controls and signal timings



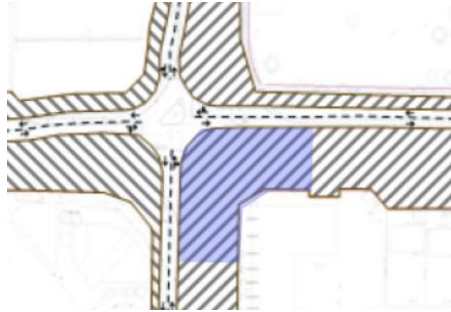
# Current Project Agreement Traffic Requirements

- Outlines traffic requirements the contractor must adhere to
- Strikes a balance between traffic flow and sufficient space for construction
- Limits impacts to signalized intersections
- Full road closures can only occur if other similar nearby roads are available
- Results in longer construction periods and extended traffic impacts

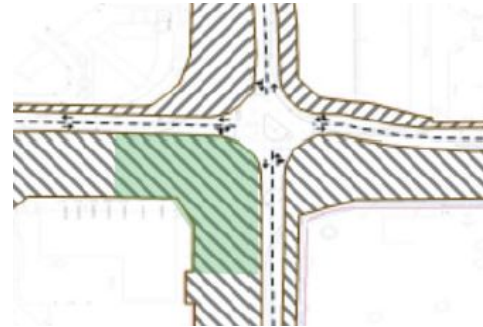


# Project Agreement Intersection Phasing

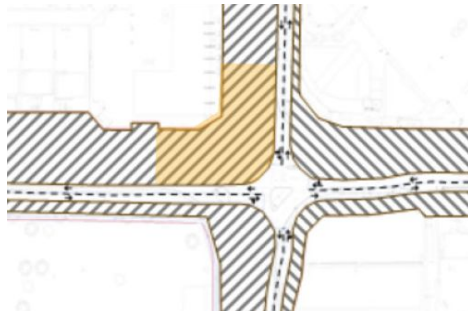
- Full intersection reconstruction often requires 4 to 6 construction phases



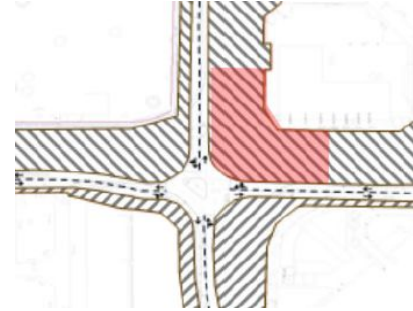
*Phase 1*



*Phase 2*



*Phase 3*



*Phase 4*

# Valley Line West Construction Plan for 2025

- Starting fourth year of major construction
- Significant construction progress was made in 2024
- **Goal for 2025: complete the majority of roadwork and trackwork in key areas**
- Accelerated roadwork plan would reduce the overall timeframe of traffic restrictions by more than half
  - Significant traffic restrictions at key intersections and along busy corridors

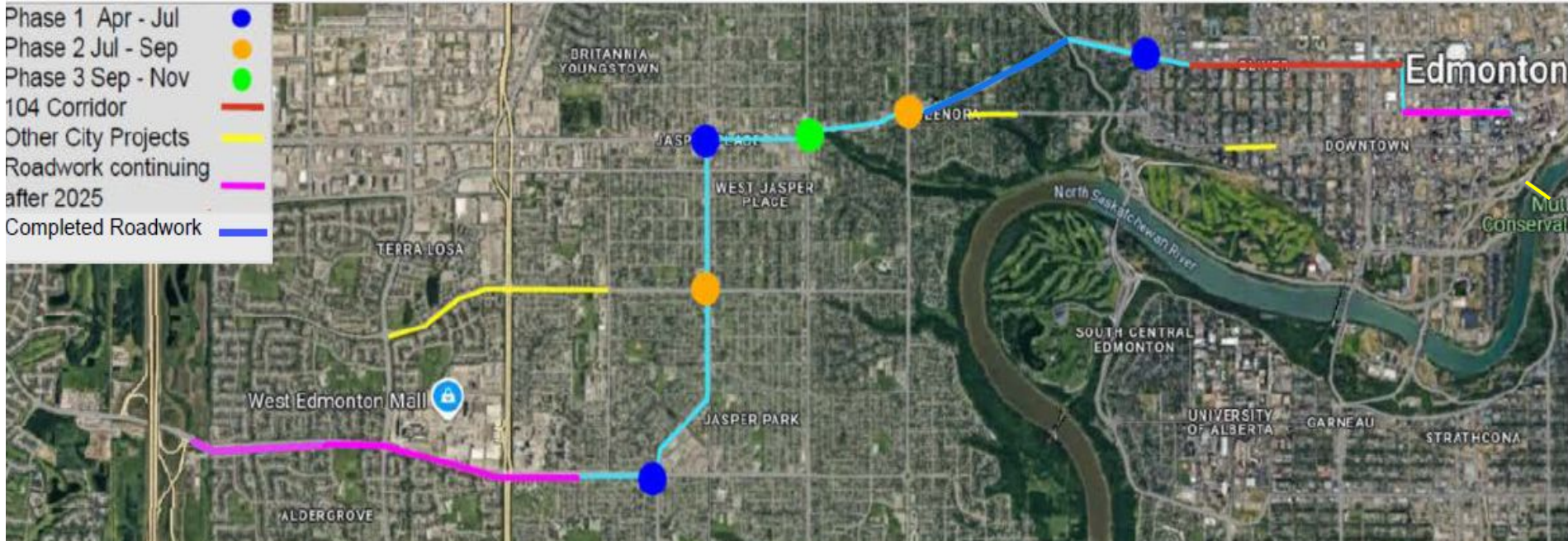


# Valley Line West Construction Plan for 2025

- Accelerated roadwork plan:
  - Three-phased approach (April-November)
  - MIP would work extended hours and have dedicated crews at intersections
  - Public communications plan would be developed
  - Certain traffic requirements in Project Agreement would be adjusted
  - Shortens the overall duration of roadway impacts in key areas

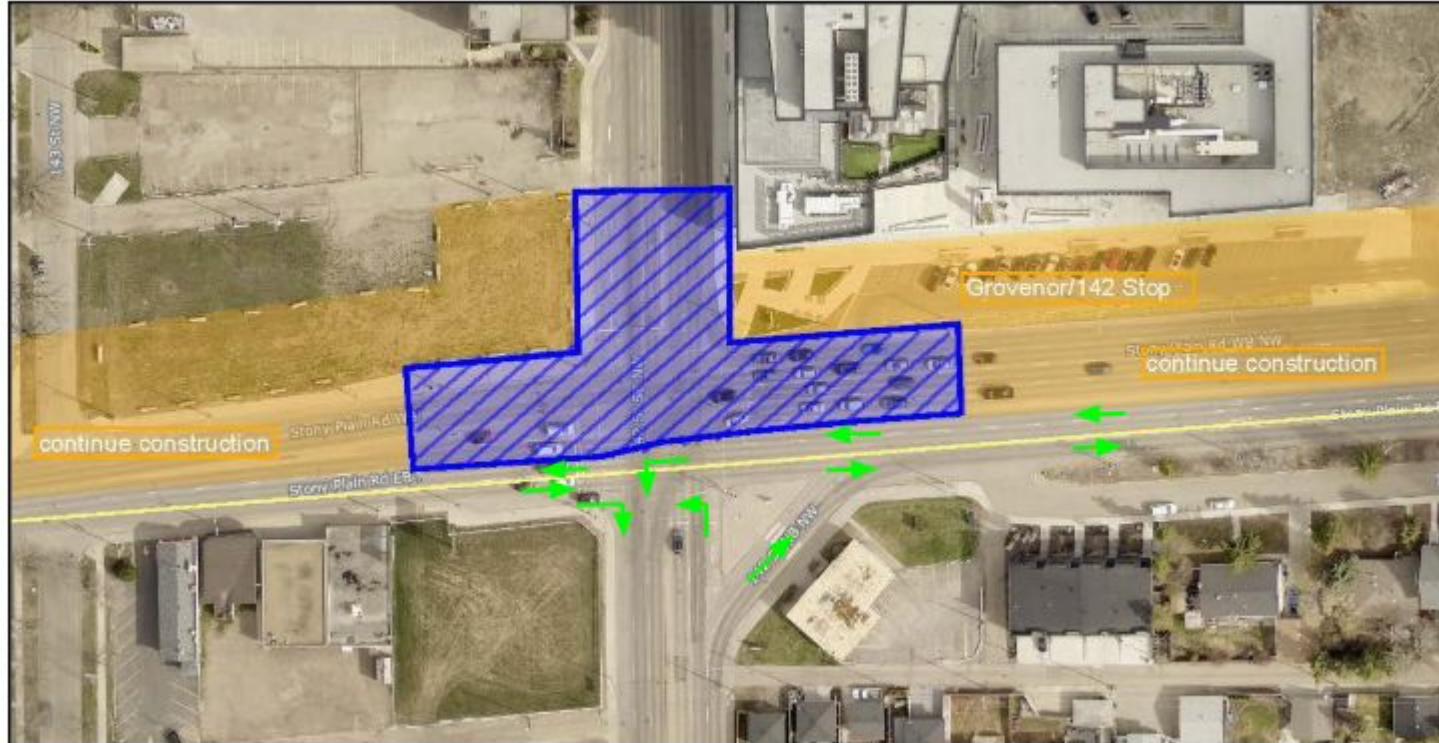


# Valley Line West 2025 Roadwork





# Sample Partial Closure Stony Plain Road - 142 St



# Road Construction Duration

## ACCELERATED vs. PROJECT AGREEMENT

INTERSECTION/CORRIDOR	ACCELERATED	PROJECT AGREEMENT
Stony Plain Road at 124 Street	6-8 weeks	48 weeks (over 2 years)
Stony Plain Road at 156 Street	10-12 weeks	36 weeks
87 Ave at Meadowlark Road	8-10 weeks	24 weeks
Stony Plain Road at 142 Street	7-9 weeks	24 weeks
95 Ave at 156 Street	7-9 weeks	36 weeks
Stony Plain Road at 149 Street	7-9 weeks	24 weeks
104 Ave (106-121 Street); single lane EB/WB	28-36 weeks	52 weeks (over 2 years)



# Communications and Stakeholder Outreach

- Various proactive measures to communicate traffic restrictions:
  - Onsite road signage
  - Business wayfinding signage (e.g. 104 Avenue)
  - Stakeholder outreach & public notices
  - Media event/interviews
  - Social media/websites
  - Councillor toolkits



# Summary of Accelerated Roadwork Plan

## BENEFITS

- Majority of roadwork would be completed in key areas in 2025
- Shortens overall timeframe of traffic restrictions
- Permanent road and trackwork through intersections would be faster
- Relieves some pressure on trackwork schedule in future years

## CHALLENGES

- More disruptive in the short-term
- Potential frustration from commuters, residents, businesses
- Potential neighbourhood shortcutting for the first few days
- Emergency or unplanned work could increase traffic impacts

# Thank you.

## Questions?

Integrated Infrastructure Services  
LRT Expansion and Renewal  
[edmonton.ca/valleylinewest](http://edmonton.ca/valleylinewest)

**Edmonton**