

# Metro Line LRT Update



Transportation Committee | October 7, 2015

# Update

- Existing operations results
- Feasibility of relocating NAIT Station
- Summary

# Metro Line Launch



## Sept 6 Launch Preparation:

- Comprehensive Public Communication Plan
- Roadside Messaging Deployed
- Potential Traffic Impacts Identified

# Traffic Impacts



## TYPICAL TRAFFIC DELAYS OBSERVED AT METRO LINE INTERSECTIONS DURING AM/PM PEAK HOURS

	Princess Elizabeth Ave - 106/109 St.	111 Ave - 106 St.	Kingsway - 104/105 St.	107 Ave - 105 St.
Time Delayed During Peak Traffic (minutes)	5	5	3	2
Number Traffic Cycles to Clear Intersection	1-2	1-2	1	1

**Table 1:** The typical length of time delayed at an intersection and the typical number of traffic light cycles to clear the intersection after train crossing during peak traffic.

# Traffic Impacts



## MAXIMUM TRAFFIC DELAYS OBSERVED AT METRO LINE INTERSECTIONS DURING AM/PM PEAK HOURS

	Princess Elizabeth Ave - 106/109 St.	111 Ave - 106 St.	Kingsway - 104/105 St.	107 Ave - 105 St.
Time Delayed During Peak Traffic (minutes)	10	8	5	3
Number Traffic Cycles to Clear Intersection	3	3	2	1

**Table 2:** The maximum length of time delayed at an intersection and the typical number of traffic light cycles to clear the intersection after train crossing during peak traffic.

# Transit Operations



## Edmonton Transit Bus Delays

- Kingsway area delays up to 8 minutes

## LRT Service Reliability

- Meeting targets

## LRT Peak Hour & Daily Ridership

- 1,700 peak hour riders
- 12,800 daily ridership

# NAIT Station



## 2008 Concept Plan:

- Temporary NAIT station south of Princess Elizabeth Ave (South Station)



Princess Elizabeth Avenue

106 Street

TEMPORARY  
NAIT STATION





127 Ave NW

YELLOWHEAD CORRIDOR - WEST

Yellowhead Trail

Beechmount Cemetery

389

107 Street

ONTON  
MICIPAL  
PORT

Blatchford

WESTWOOD

97 St NW

Assumed Extension

McNally Library

100 St NW

Princess Elizabeth Ave

NAIT

ALBERTA AVENUE

Temporary South Station

NORTH CENTRAL

97 St NW

# NAIT Station



## Early 2009:

- City Council approved phased closure of City Centre Airport
- Options explored for modified NAIT Station



## NAIT Station (continued)

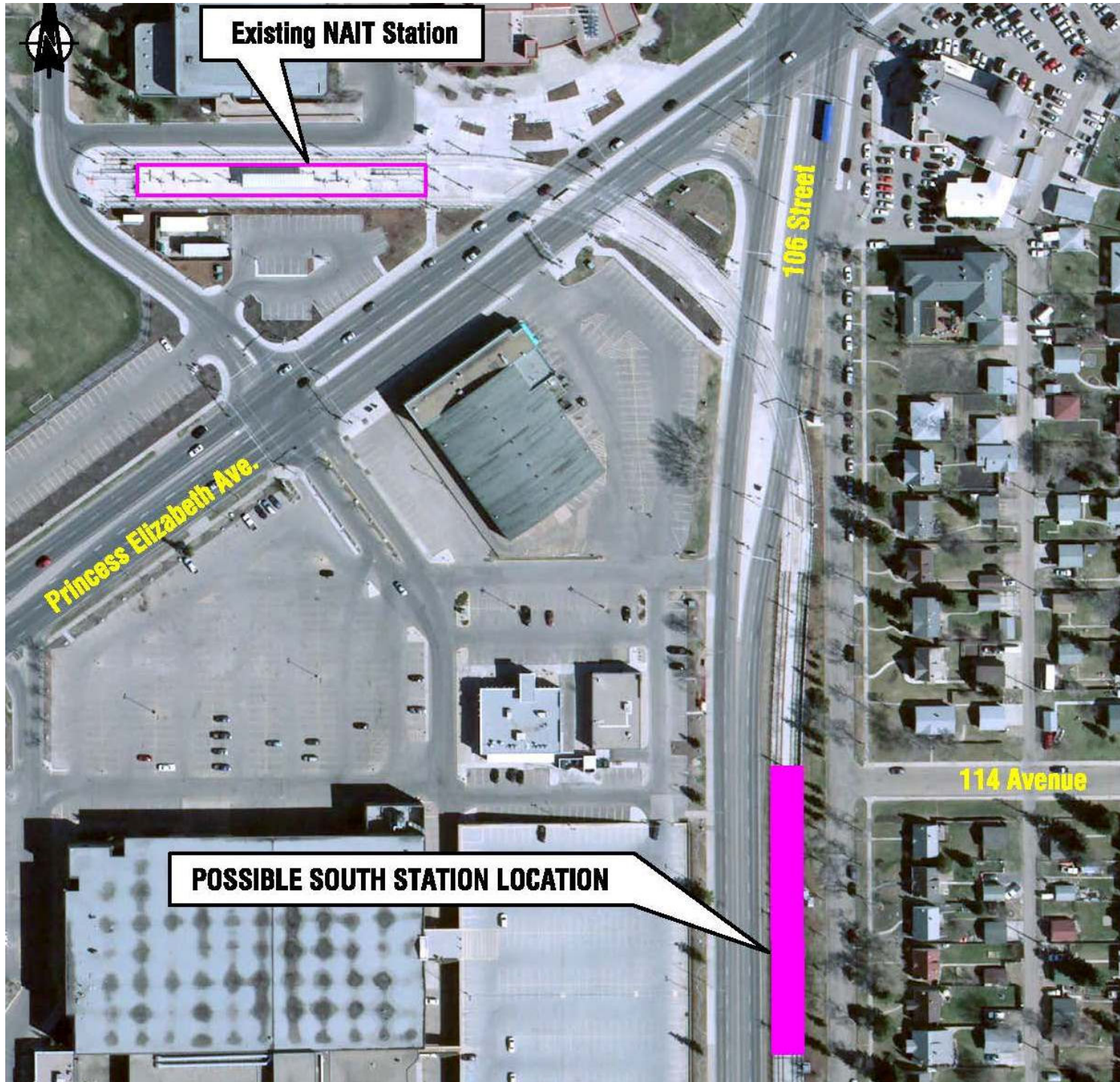
- Several alignment options explored to get reach Blatchford (including 109 St)
- Dec 2009 - Council approved current alignment
- April 2010 - Council approved updated Concept Plan





# 2015 Station Move Feasibility

- Station relocation is possible
- Impacts on:
  - 106 St
  - LRT alignment & crossovers
  - Boulevard landscaping
  - Community access



# Traffic Summary



- Strong Metro Line LRT ridership levels observed
- Positive feedback from area stakeholders
- Reliable system operation to date
- System improvement efforts are ongoing



# Move Feasibility Summary

- Metro Line planned in 2008 for known conditions
- New opportunities and decisions modified the 2008 plan
- Moving NAIT Station would require additional technical work





Thank You