

CONCEPT - SUBJECT TO PRELIMINARY SURVEY AND DESIGN

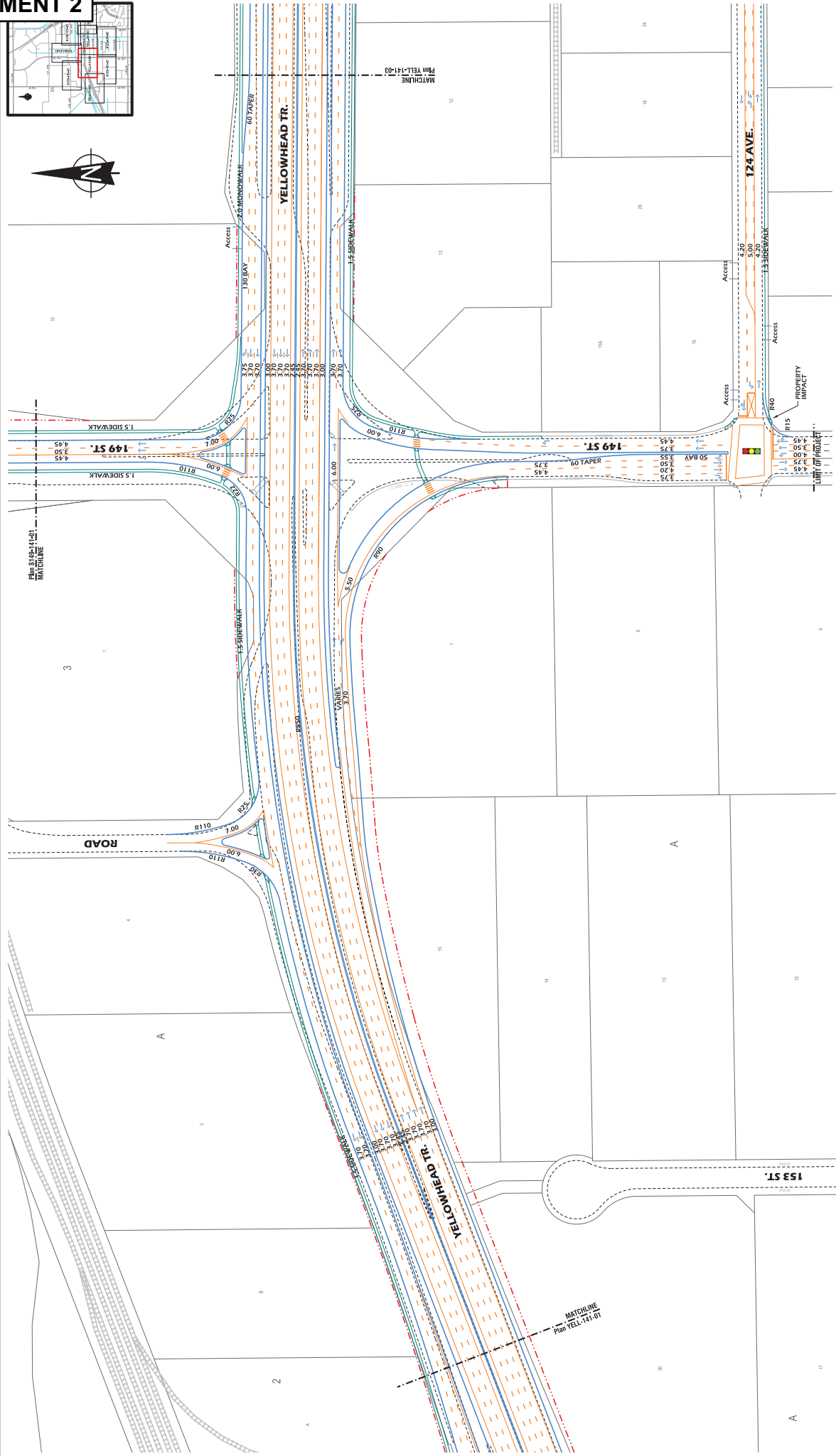
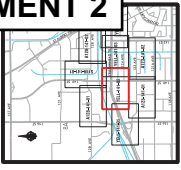
**YELLOWHEAD TRAIL**  
149 STREET FREEWAY PLAN  
NETWORK IMPROVEMENTS

Manager, Transportation Planning Branch  
Director, Facility & Capital Planning

**PROFESSIONAL ENGINEER ALBERTA**  
KAROLYN BARR  
TRANSPORTATION SERVICES  
PERMIT TO PRACTICE: 5008

**Comonton**  
TRANSPORTATION SERVICES  
PLAN NO. YELL-141-01  
SERIAL: KAROLYNB  
REVISION: AN  
DATE: SEP 2015

0 25 50m



**CONCEPT - SUBJECT TO PRELIMINARY SURVEY AND DESIGN**

**YELLOWHEAD TRAIL**  
**149 STREET FREEWAY PLAN**  
**NETWORK IMPROVEMENTS**

Manager: Transportation Planning Branch  
 Director: Facilities & Capital Planning

**Professional Engineer**  
 ALBERTA  
 REG. NO. 10000  
 10000

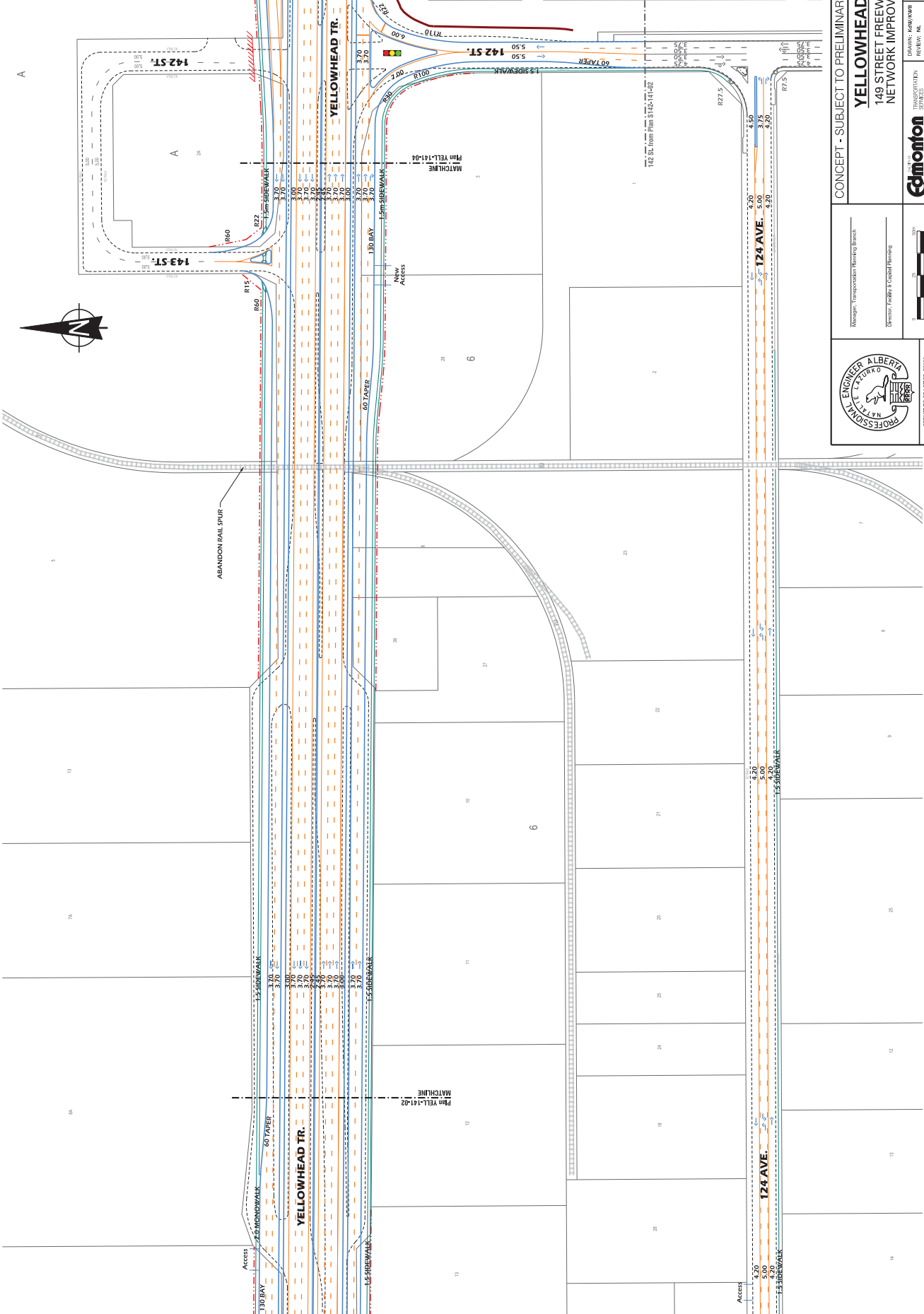
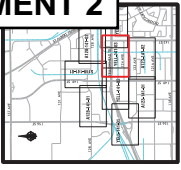
PROJECT NO. 149-01

DATE: SEP 2015

PROJECT NO. **YELL-141-02**

DATE: SEP 2015

Scale: 1" = 30'



**CONCEPT - SUBJECT TO PRELIMINARY SURVEY AND DESIGN**

**YELLOWHEAD TRAIL**  
**149 STREET FREEWAY PLAN**  
**NETWORK IMPROVEMENTS**

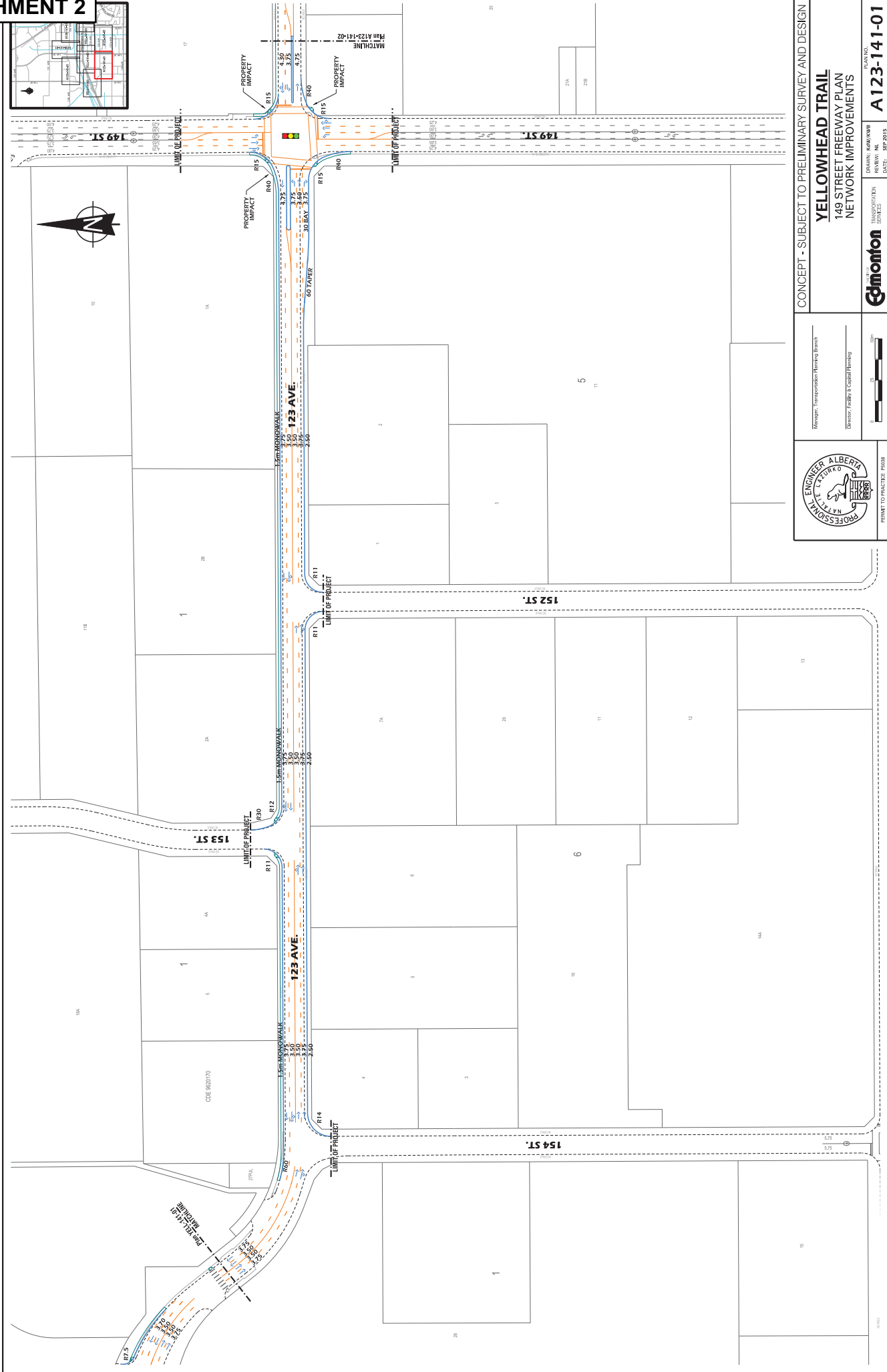
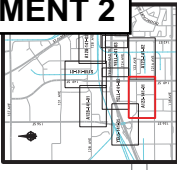
Manager: Transportation Planning Branch  
 Director: Planning & Capital Planning

**Compton** PROFESSIONAL ENGINEERS & ARCHITECTS  
 TRANSPORTATION SERVICES

PROJECT NO. YELL-141-03  
 DATE: SEP 2015

Scale: 1" = 20'





CONCEPT - SUBJECT TO PRELIMINARY SURVEY AND DESIGN

**YELLOWHEAD TRAIL**  
149 STREET FREEWAY PLAN  
NETWORK IMPROVEMENTS

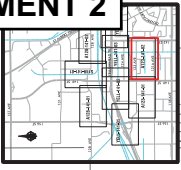
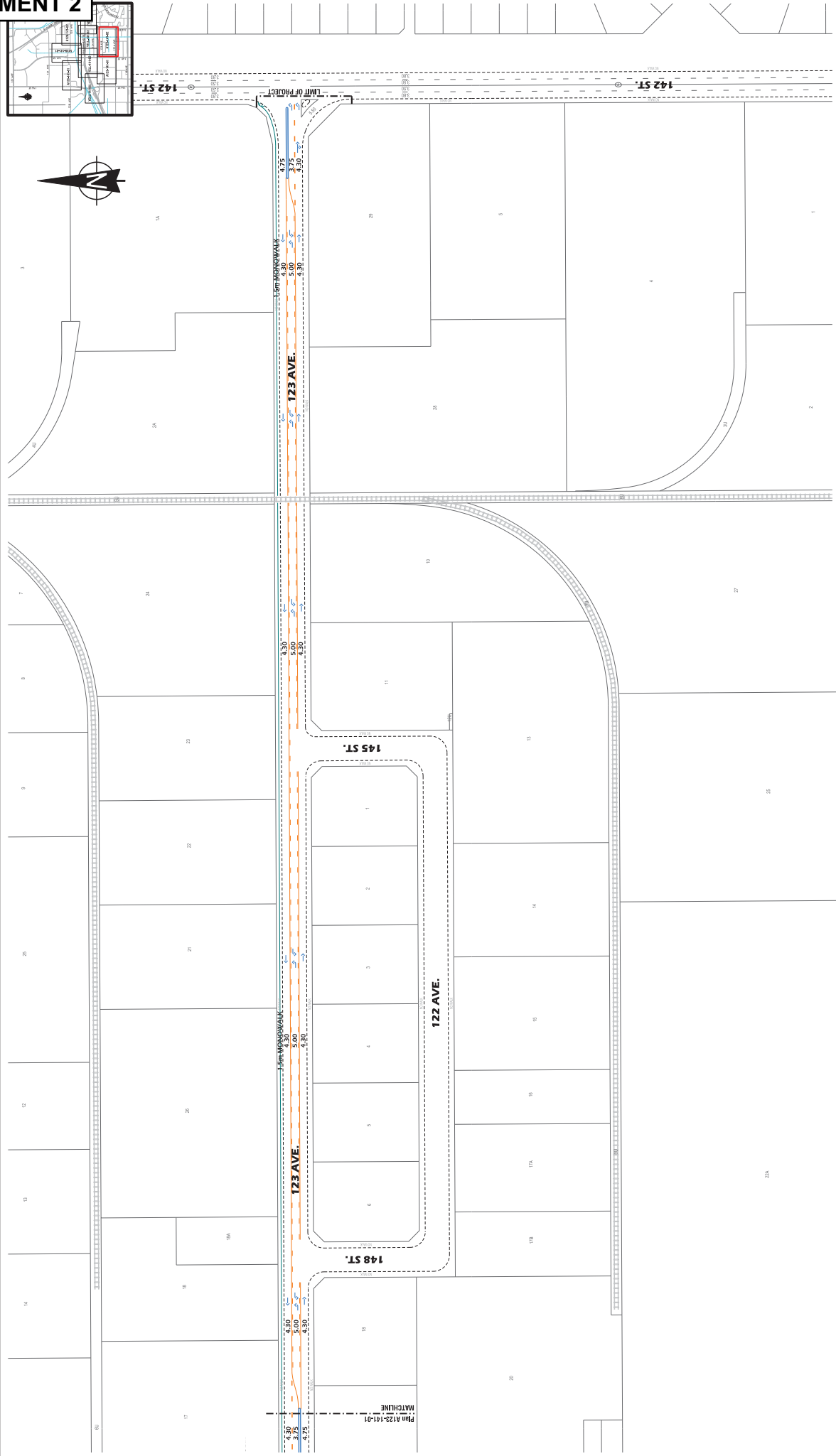
PLANT NO. A123-141-01

ENGINEER ALBERTA PROFESSIONAL ENGINEERS ASSOCIATION  
REGISTERED PROFESSIONAL ENGINEER

Manager, Transportation Planning Branch  
Director, Facility & Capital Planning

Scale: 1" = 30'

DATE: SEP 2016



**CONCEPT - SUBJECT TO PRELIMINARY SURVEY AND DESIGN**

**YELLOWHEAD TRAIL**  
149 STREET FREEWAY PLAN  
NETWORK IMPROVEMENTS

**COMONTON** TRANSPORTATION

DRAWN: KAWA/KWB  
REVIEW: AK  
DATE: SEP 2016

PLANT NO.  
**A123-141-02**

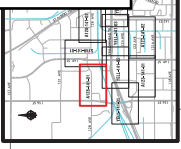
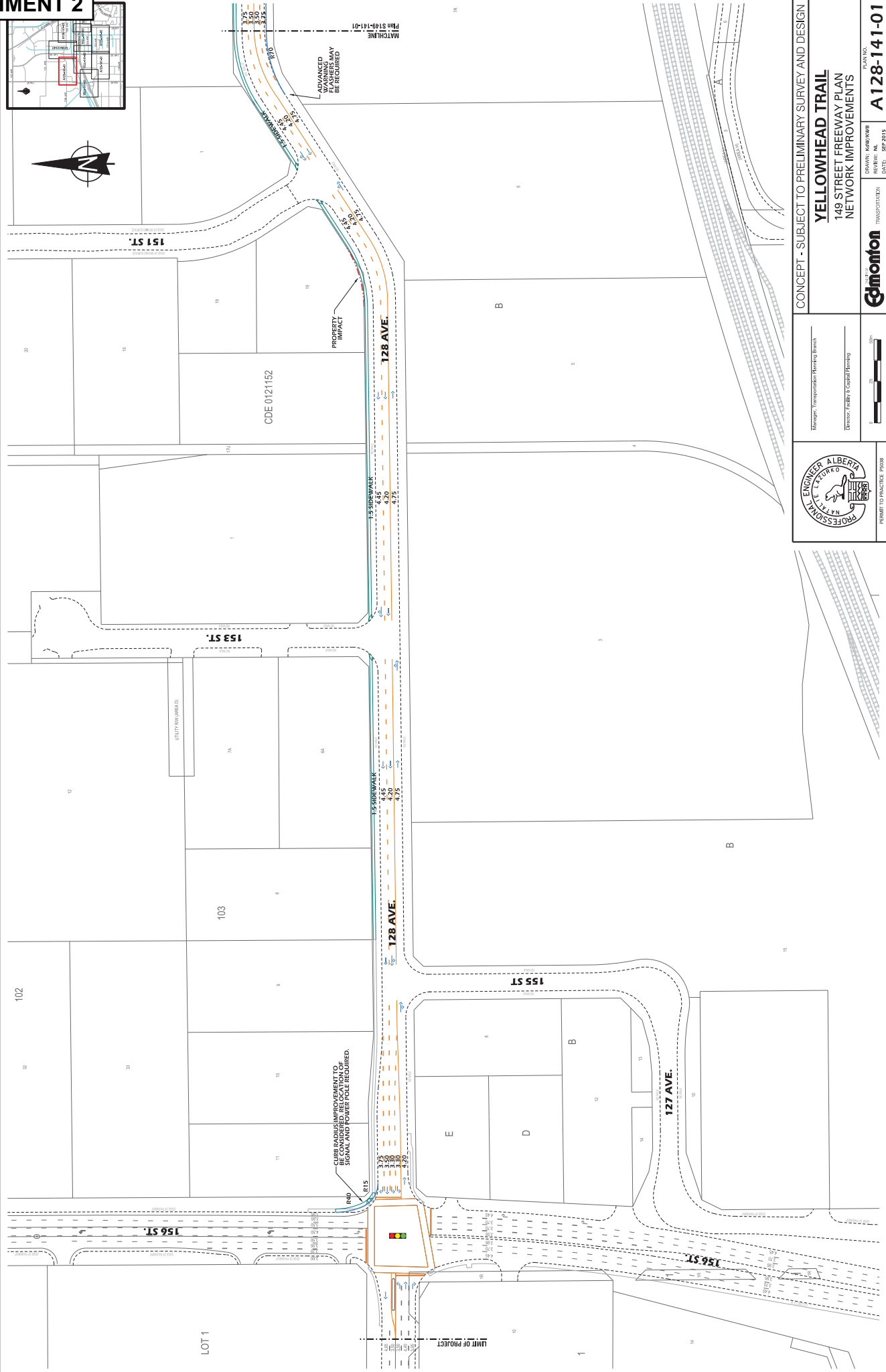
Manager, Transportation Planning Branch  
Director, Policy & Capital Planning

0 25 50m

ENGINEER ALBERTA  
PROFESSIONAL ENGINEER  
PERMIT TO PRACTICE: P0001

121A AVE.

MATCHLINE  
P104 A123-141-01



CDE 0121152

PROPERTY IMPACT

CURB RADIUS IMPROVEMENT TO BE CONSIDERED, RELOCATION OF SIGNAL AND POWER POLE REQUIRED.

ADVANCED FLASHERS MAY BE REQUIRED

MATCHLINE  
Plan S18-141-01

CONCEPT - SUBJECT TO PRELIMINARY SURVEY AND DESIGN

**YELLOWHEAD TRAIL**  
149 STREET FREEWAY PLAN  
NETWORK IMPROVEMENTS

PLAN NO. **A128-141-01**

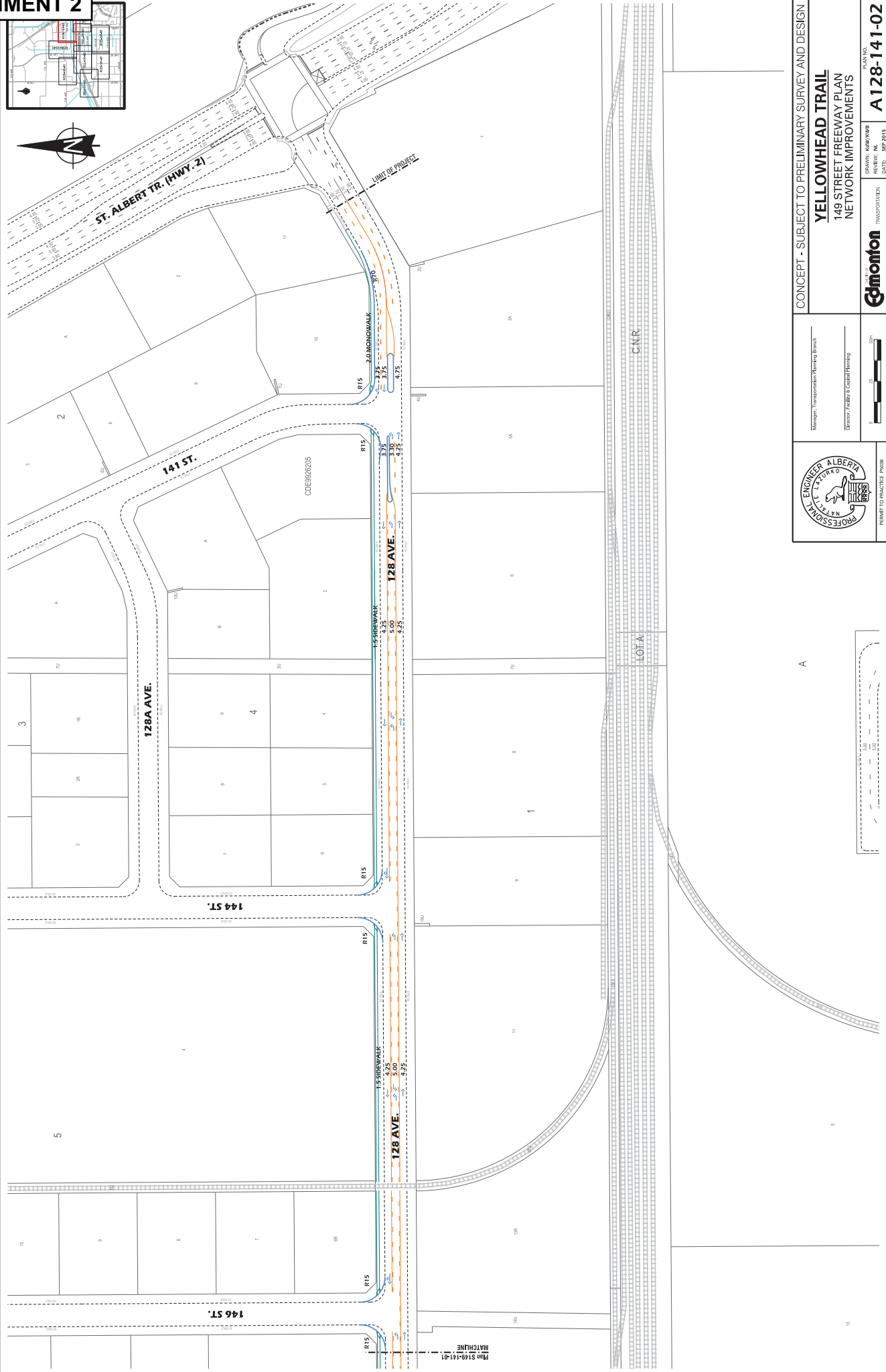
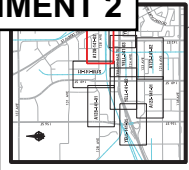
GRABNER: KAGAN/KWB  
REVISION: AK  
DATE: SEP 2018

**Compton** TRANSPORTATION

Manager, Transportation Planning Branch  
Director, Feasibility & Capital Planning

0 25 50 100

PROFESSIONAL ENGINEER ALBERTA  
NATURAL REGULATORY BOARD  
REGISTERED PROFESSIONAL ENGINEER  
PREPARED FOR: PRAC/18/0008



CONCEPT - SUBJECT TO PRELIMINARY SURVEY AND DESIGN

**YELLOWHEAD TRAIL**  
149 STREET FREEWAY PLAN  
NETWORK IMPROVEMENTS

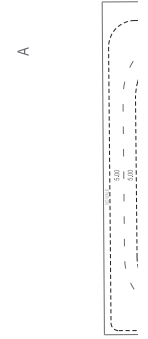
Manager, Transportation Planning Branch  
Director, Facility & Capital Planning

PROFESSIONAL ENGINEER ALBERTA  
REGISTERED CIVIL ENGINEER  
PERMIT TO PRACTICE: 4036

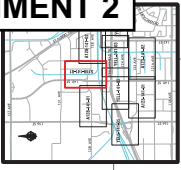
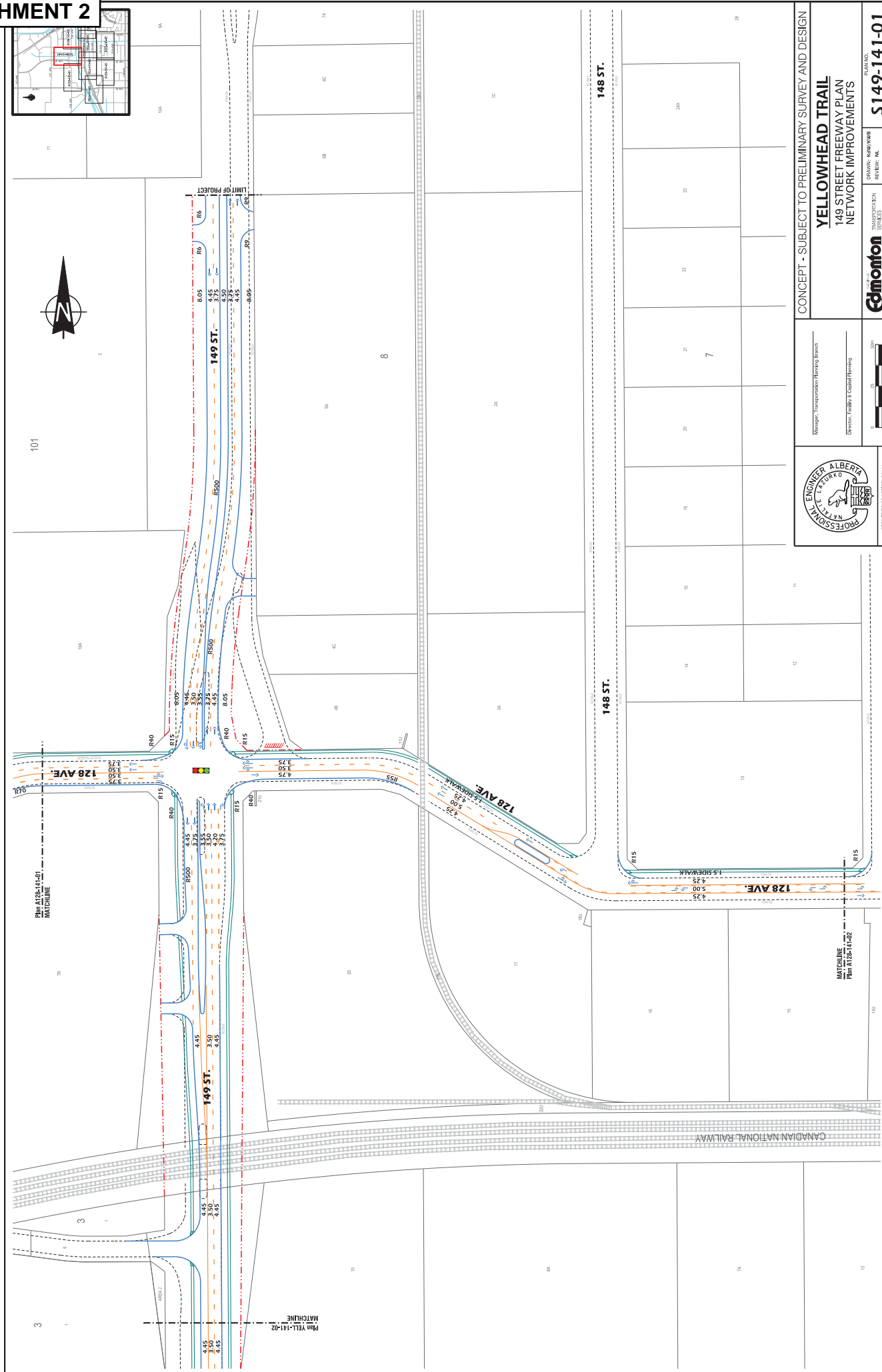
Scale: 0 25 50m

PLAN NO. **A128-141-02**  
DRAWN: KAW/KWB  
REVIEW: AK  
DATE: SEP 2016

**Compton**  
TRANSPORTATION





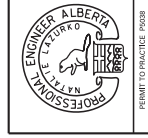


101

Plan A128-141-01  
MATCHLINE

Plan YEL-141-02  
MATCHLINE

MATCHLINE  
Plan A128-141-02



PERMIT TO PRACTICE: 10002

Manager, Transportation Planning Branch  
Director, Facility & Capital Planning



CONCEPT - SUBJECT TO PRELIMINARY SURVEY AND DESIGN  
**YELLOWHEAD TRAIL**  
149 STREET FREEWAY PLAN  
NETWORK IMPROVEMENTS  
TRANSPORTATION SERVICES  
GRAHAM: KAWA/KWB  
REVIEW: AK  
DATE: SEP 2015  
**Compton**  
PLANT NO.  
**S149-141-01**