



INFILL_STORIES
Posts



Front doors opening into the alley, just steps from a major intersection. Is this good planning? 🤔

13 3 3



infill_stories Urban planning gone wrong!
🔴 These two back units have their main entrances opening directly into an... more

1 week ago





INFILL_STORIES Posts



infill_stories

infill_stories · Original audio



One small step and you're on
the bus (or under it 🤪),



12 1 18





INFILL_STORIES Posts



infill_stories

🎵 infill_stories · Original audio



At least it's not a long walk to the neighbours... 🙄 🤔



📖 12 💬 1 📍 18





INFILL_STORIES Posts



16 3 4

infill_stories Ah yes, the majestic garbage bin forest... exactly what residential neighbourhoods were missing 🙄 #saveyeg #cityofedmonton #betterinfill

March 29





INFILL_STORIES
Posts



infill_stories

Queen Alexandra



8 3



infill_stories Beautiful 8-plex infill landscaping in Queen Alex—every neighbour's dream! And no... more





INFILL_STORIES Posts



infill_stories

infill_stories · Original audio



11 2 1





INFILL_STORIES Posts

units replacing 1 house means 32... more
March 18

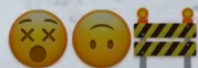


infill_stories

🎵 RUN DMC · It's Tricky



Ever wanted a front-row seat
to a construction site injury?
No skills? No gear?
No problem!
Just stroll on over—looks like
safety is optional today





INFILL_STORIES Posts



infill_stories
Edmonton, Alberta



- Air bnb on the right of this infill
- bungalow on the left trying to sell with no luck
- Across the street...a renter has been told to find a new place to live because the tenant is selling the house before it's too late.



How are these projects building better neighbourhoods??

8 1 1



infill_stories The house on the right was turned into an Airbnb AFTER the owners moved due to the infill being built... more

March 14

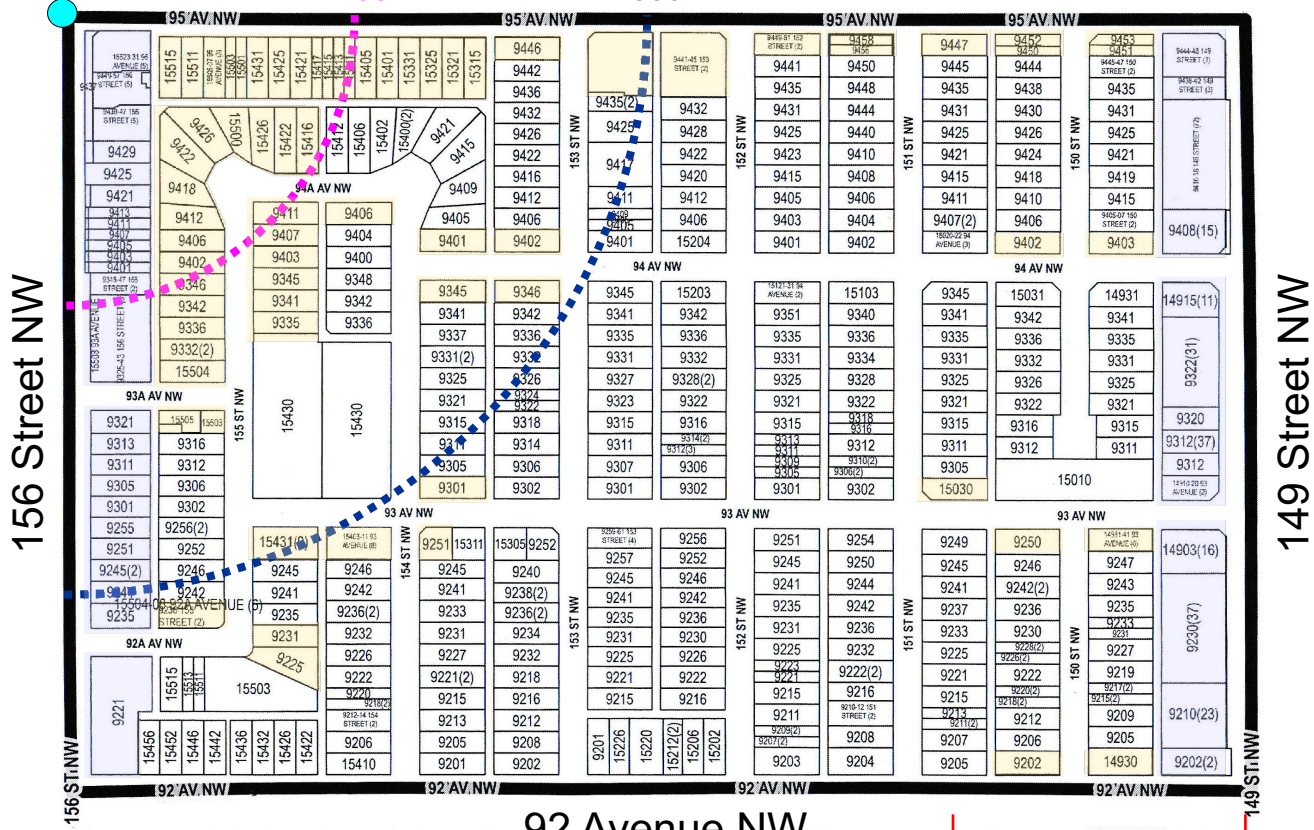


SHERWOOD

95 Avenue NW

800 m

400 m



156 Street NW

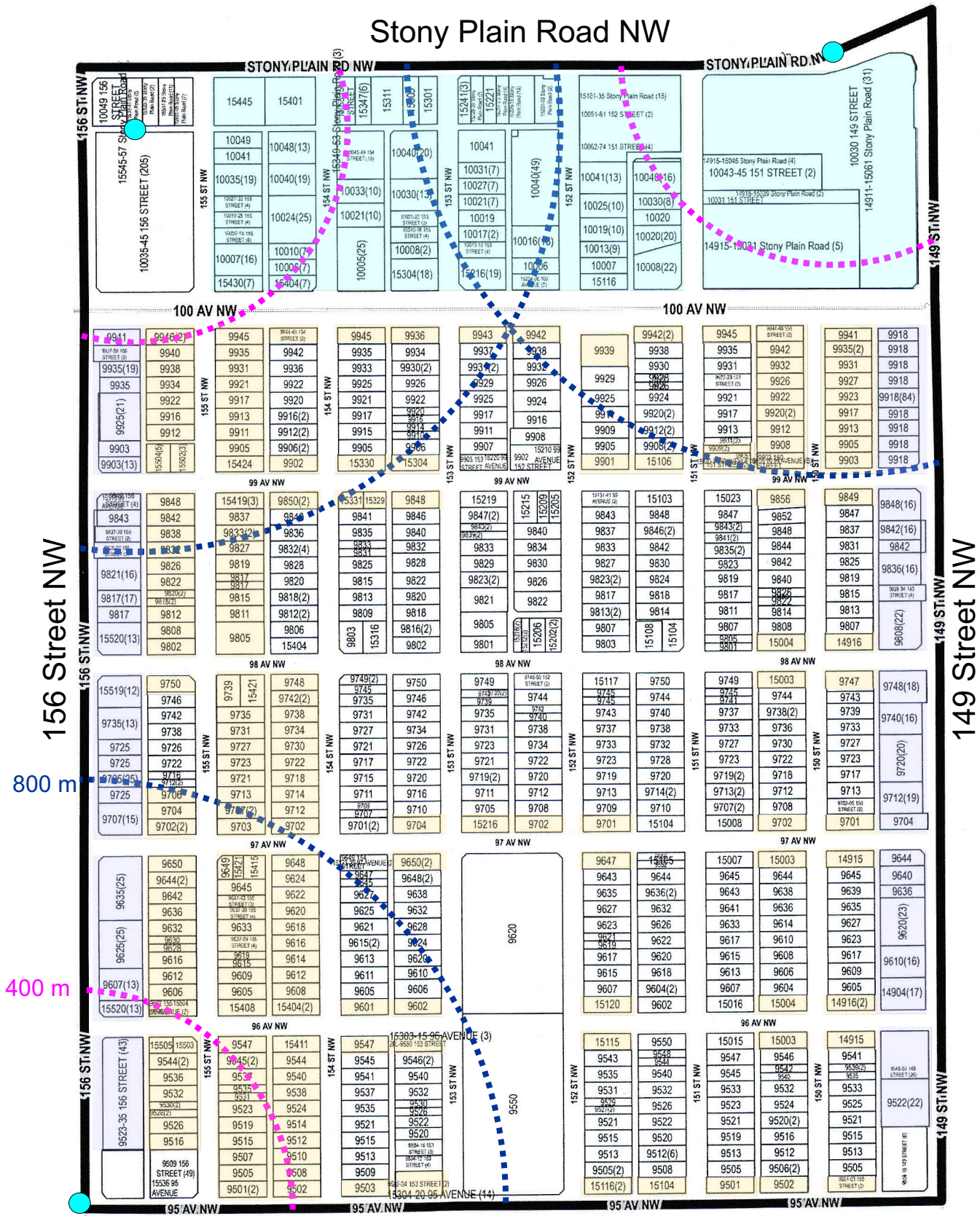
149 Street NW

92 Avenue NW

200 Meters

WEST JASPER PLACE

Stony Plain Road NW



95 Avenue NW

200 Meters

WEST JASPER PLACE Overlay of Potential 2.5.2.5 Zonings

Stony Plain Road NW

