

ITEMS 3.6 - 3.9  
CHARTER BYLAW 21114 &  
BYLAWS 21113, 21115 & 21116  
KENDAL

DEVELOPMENT  
SERVICES  
Apr 28, 2025







# 3 COMMUNITY INSIGHTS

Respondents (0)



CITY WEBPAGE  
Dec 20, 2023



MAILED NOTICE  
Oct 23, 2024



ONLINE  
ENGAGEMENT  
Nov 6 - Nov 20, 2024



OPEN HOUSE  
Nov 26, 2024



PUBLIC HEARING  
NOTICE  
Apr 3, 2025



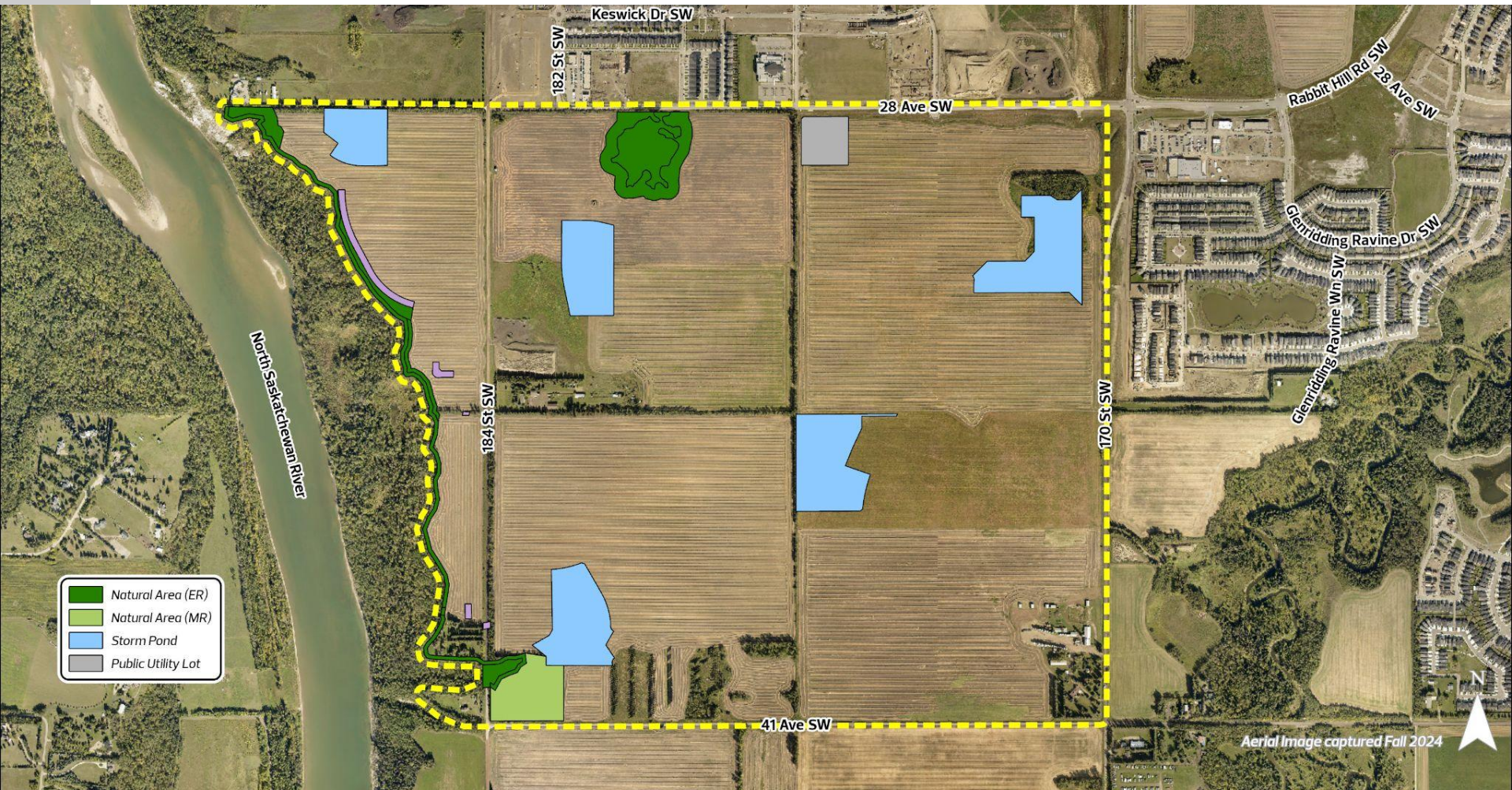
JOURNAL AD  
Apr 11 & Apr 19,  
2025



# 4 NATURAL FEATURES

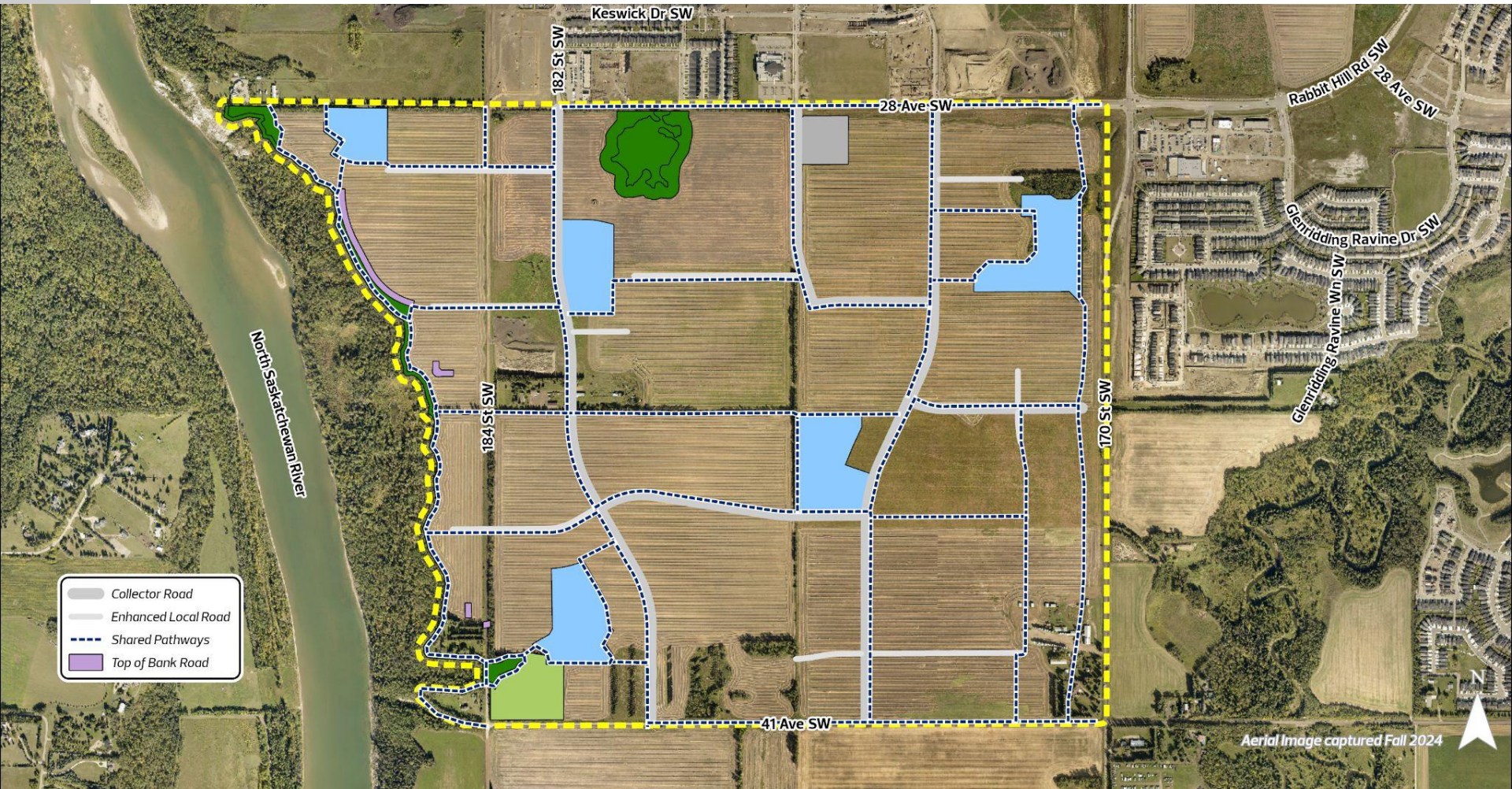






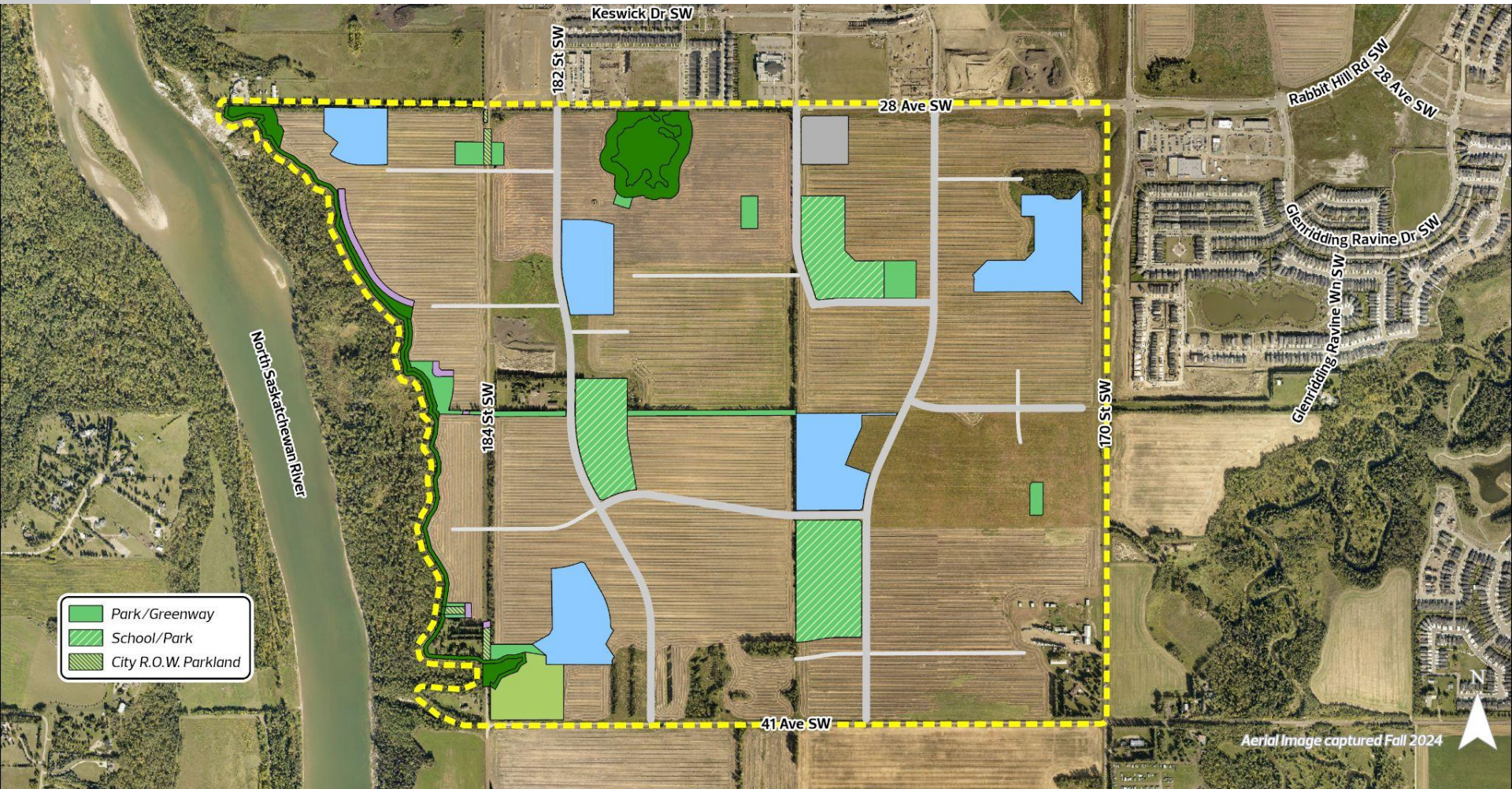


# 6 TRANSPORTATION NETWORK

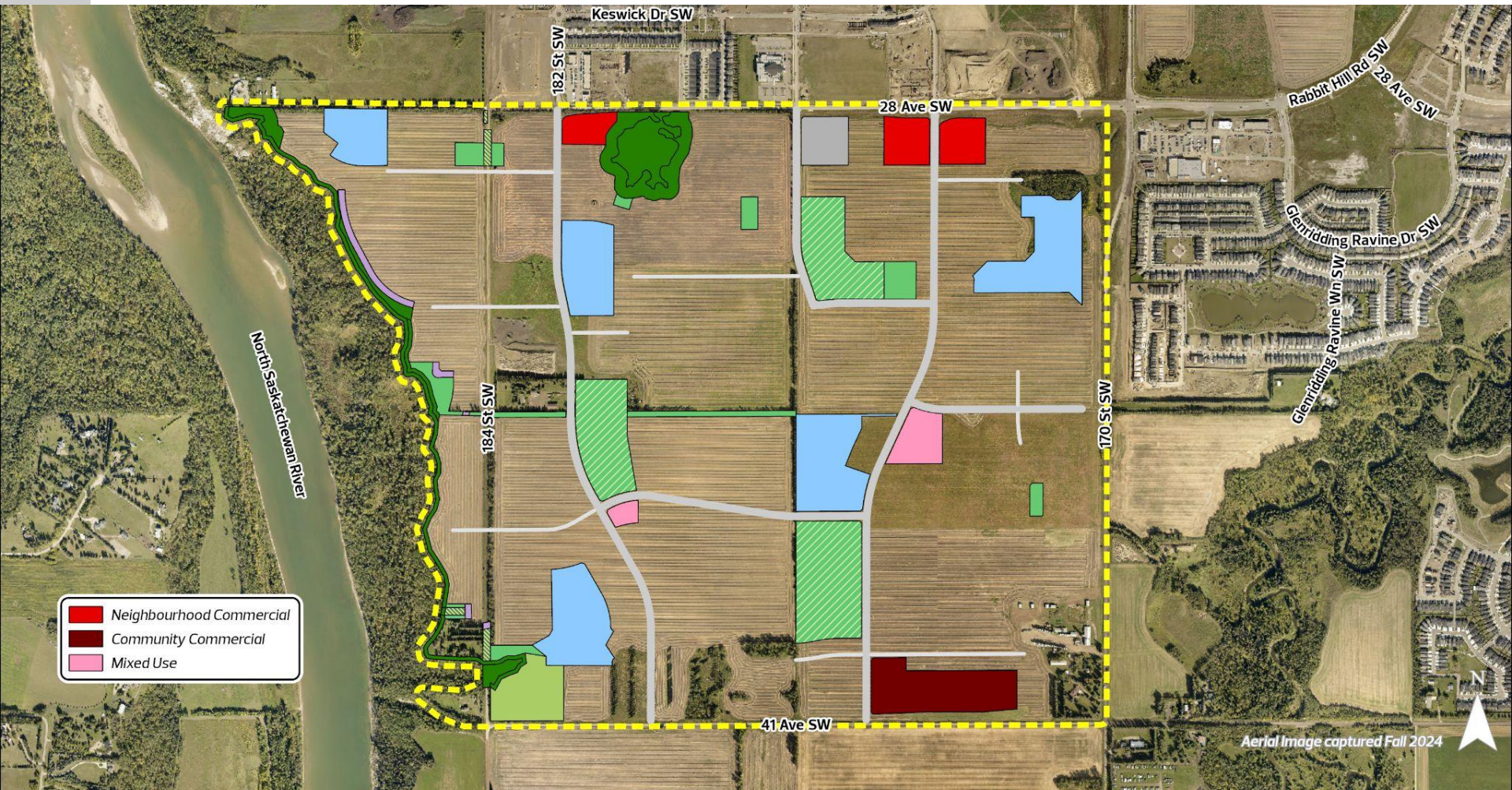




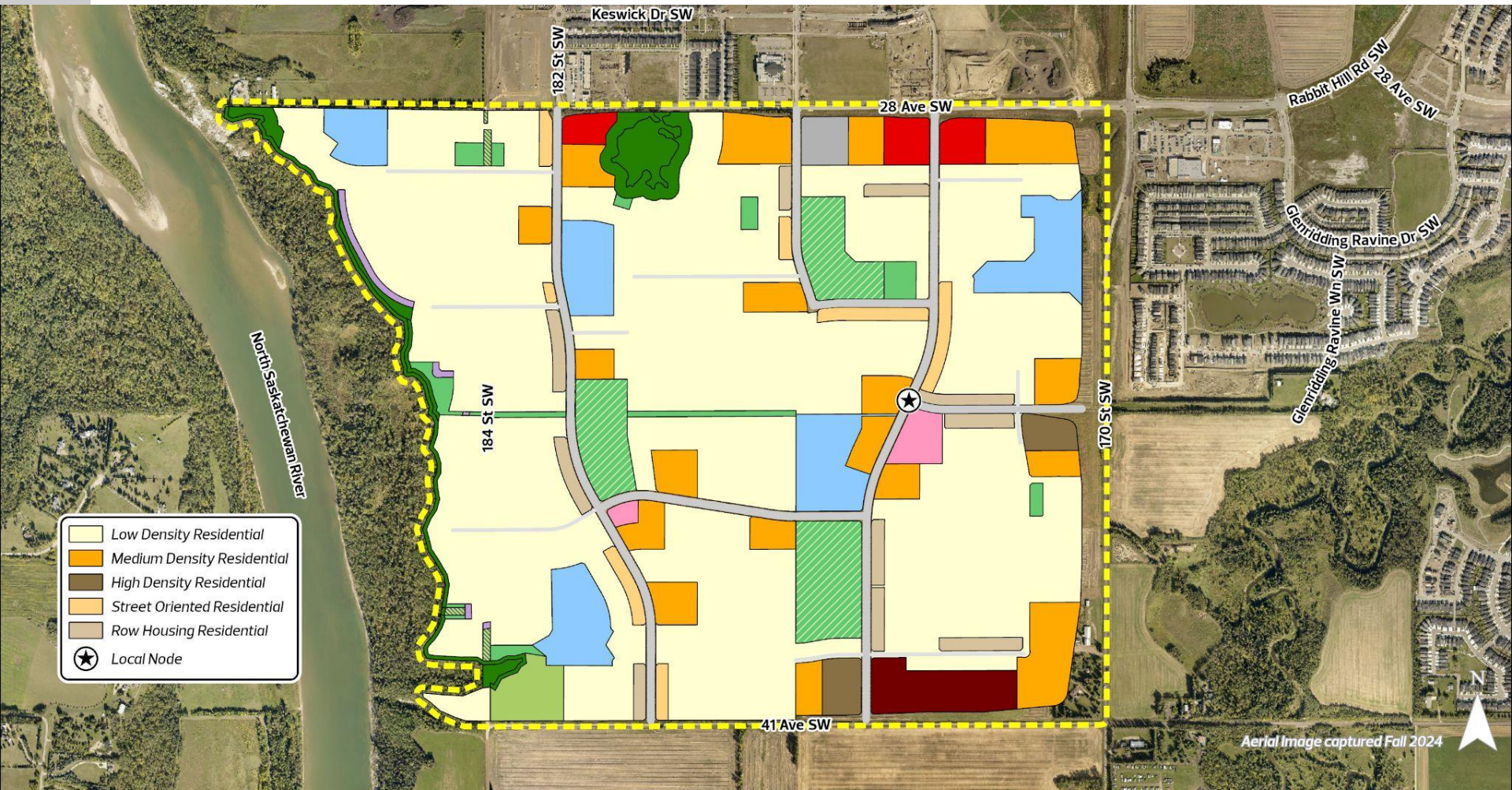
# 7 PARKS & SCHOOLS



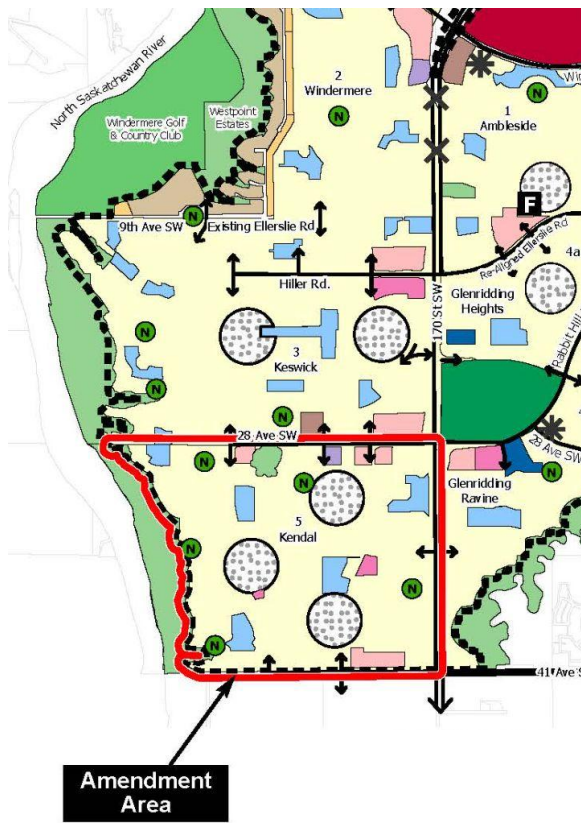




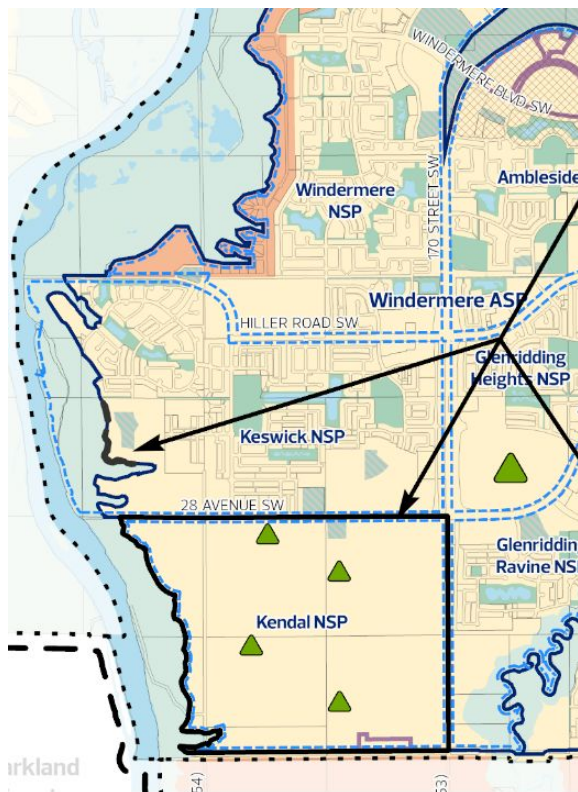




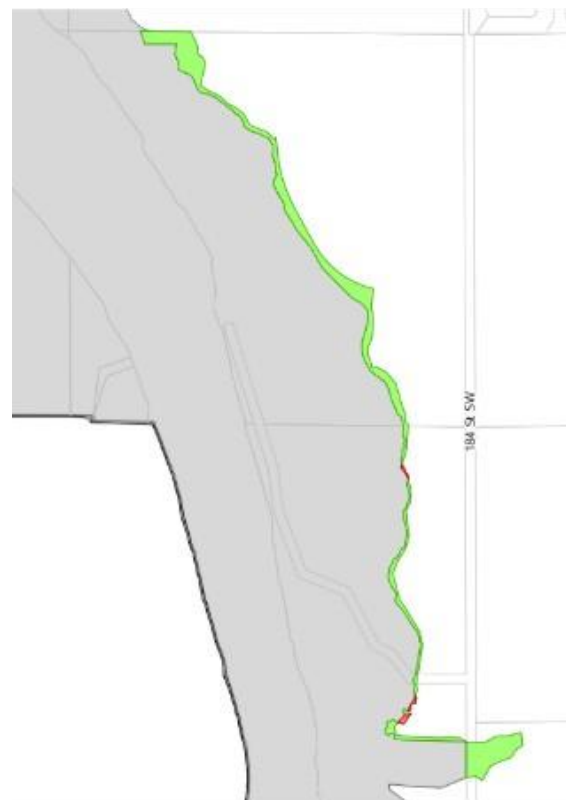




WINDERMERE ASP



SOUTHWEST DISTRICT PLAN

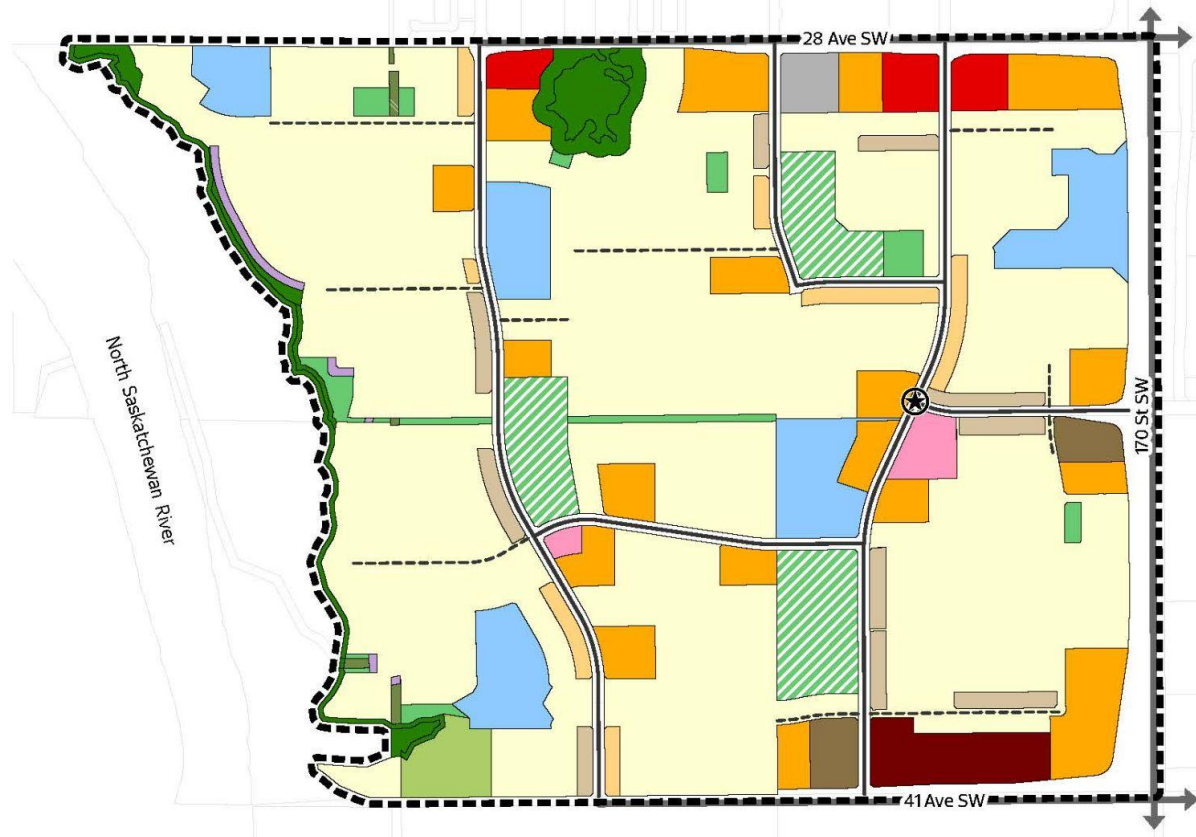
NORTH SASKATCHEWAN  
RIVER VALLEY ARP



# Integrated Infrastructure Management Plan Analysis

- Higher revenues from higher than typically planned dwelling unit density (45 du/nrha) and associated population
- Projected revenues of \$1.42 billion exceed costs (over 50 years)
- Operation and Maintenance costs make up 78% of City costs, renewal 14%, capital costs 8%
- Population-driven City costs not included but population-driven revenues (e.g. parking, transit fares, grant revenue and franchise fees) were included





ADMINISTRATION'S RECOMMENDATION: **APPROVAL**