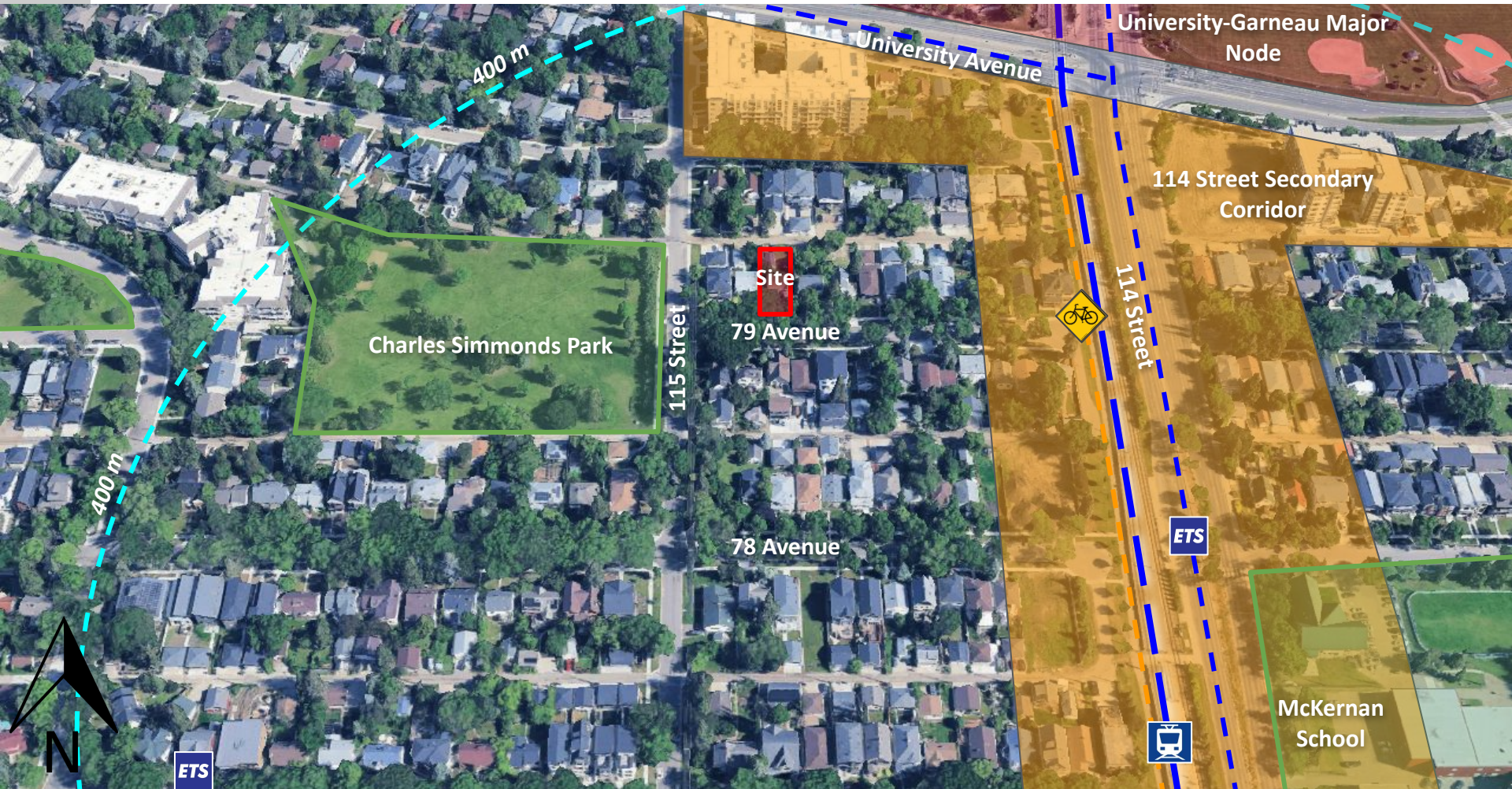


ITEM 3.16
BYLAW 21133
MCKERNAN

DEVELOPMENT
SERVICES
APR 28, 2025

Edmonton



3 COMMUNITY INSIGHTS

Respondents (20)

Opposition (20)

- Traffic congestion.
- RS zoning is sufficient.
- Mid block increases in scale are not in line with the character of the neighbourhood.
- Parking congestion increasing and illegal parking.



MAILED NOTICE
Jan 31, 2025



CITY WEBPAGE
Feb 14, 2025



1:1 COMMUNICATION
Ongoing



SITE SIGNAGE
Mar 5, 2025

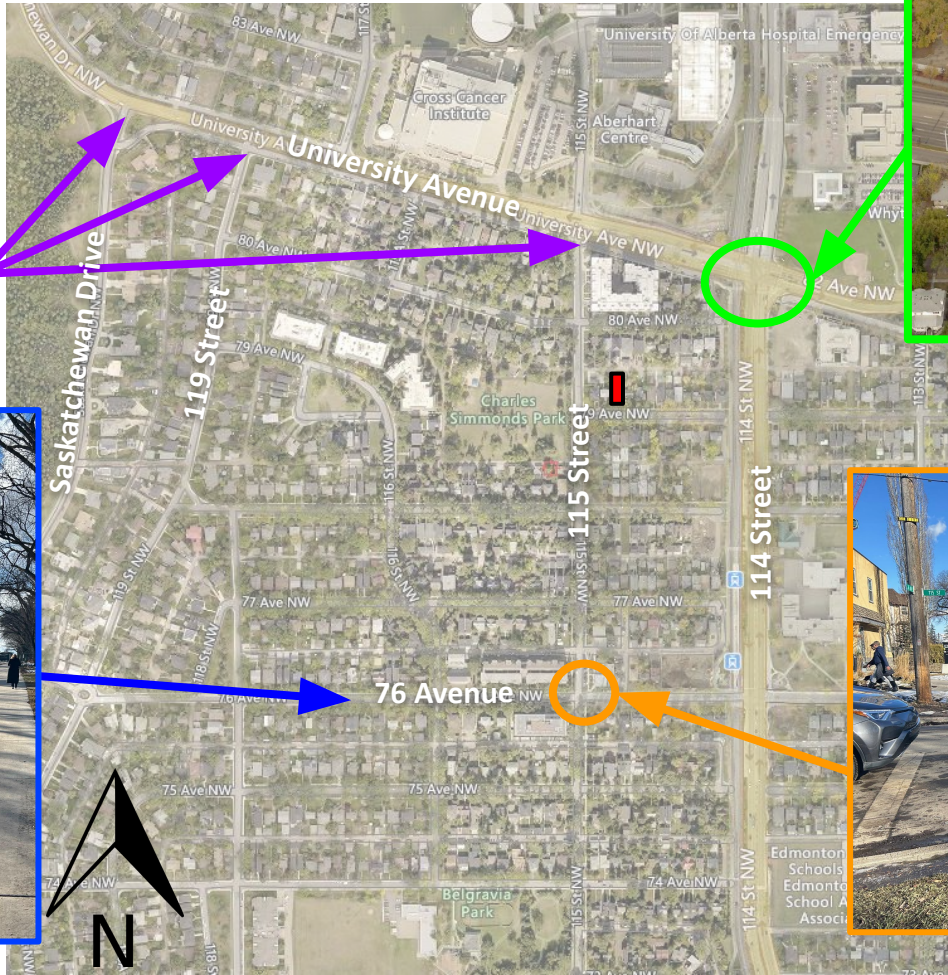


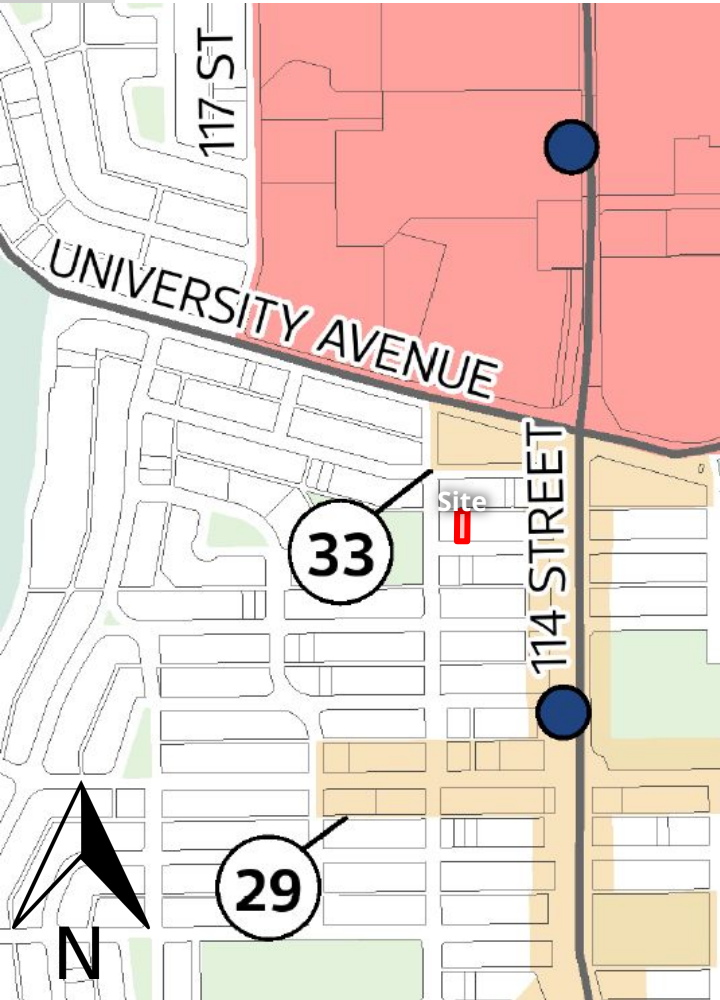
PUBLIC HEARING
NOTICE
Apr 3, 2025



JOURNAL AD
Apr 11 & 19, 2025

“Local Traffic Only”

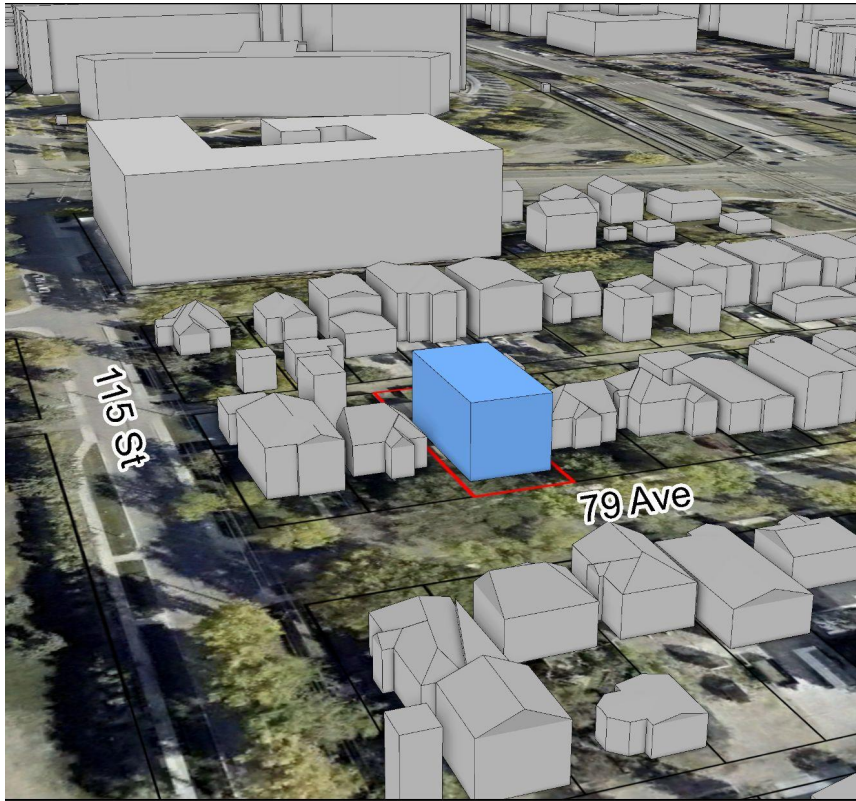


District Policy 2.5.2.6

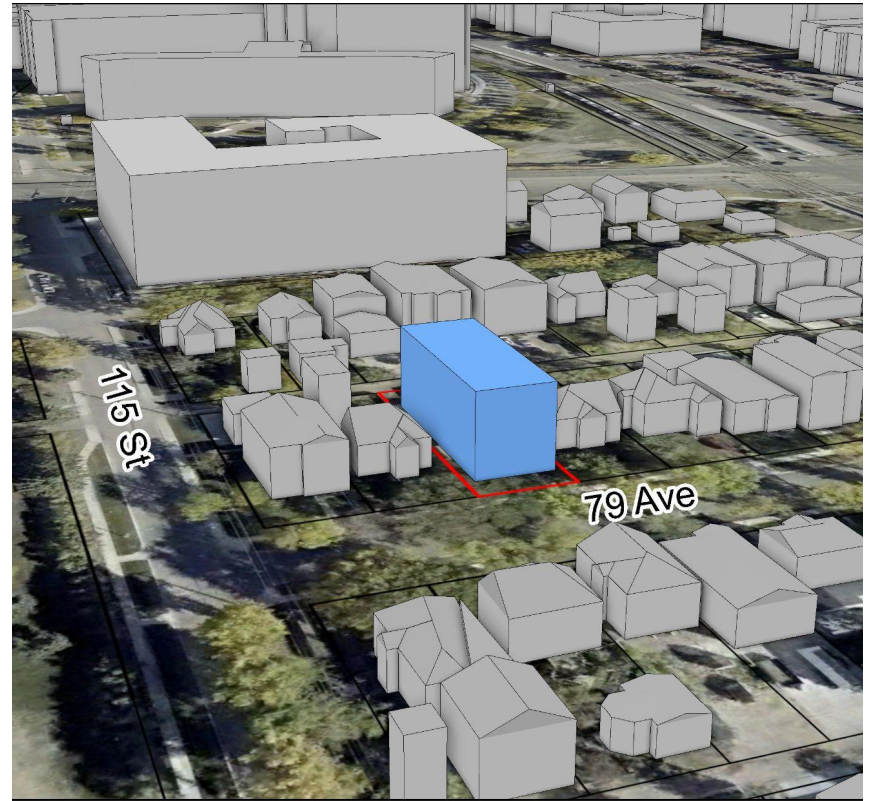
- **In a Node or Corridor Area or within 100 metres of a Node or Corridor Area.**
- **Within 400 metres of a Mass Transit Station.**
- Along an Arterial Roadway or a Collector Roadway.
- At a corner site or adjacent to a park or open space.
- Adjacent to a site zoned for greater than Small Scale development.



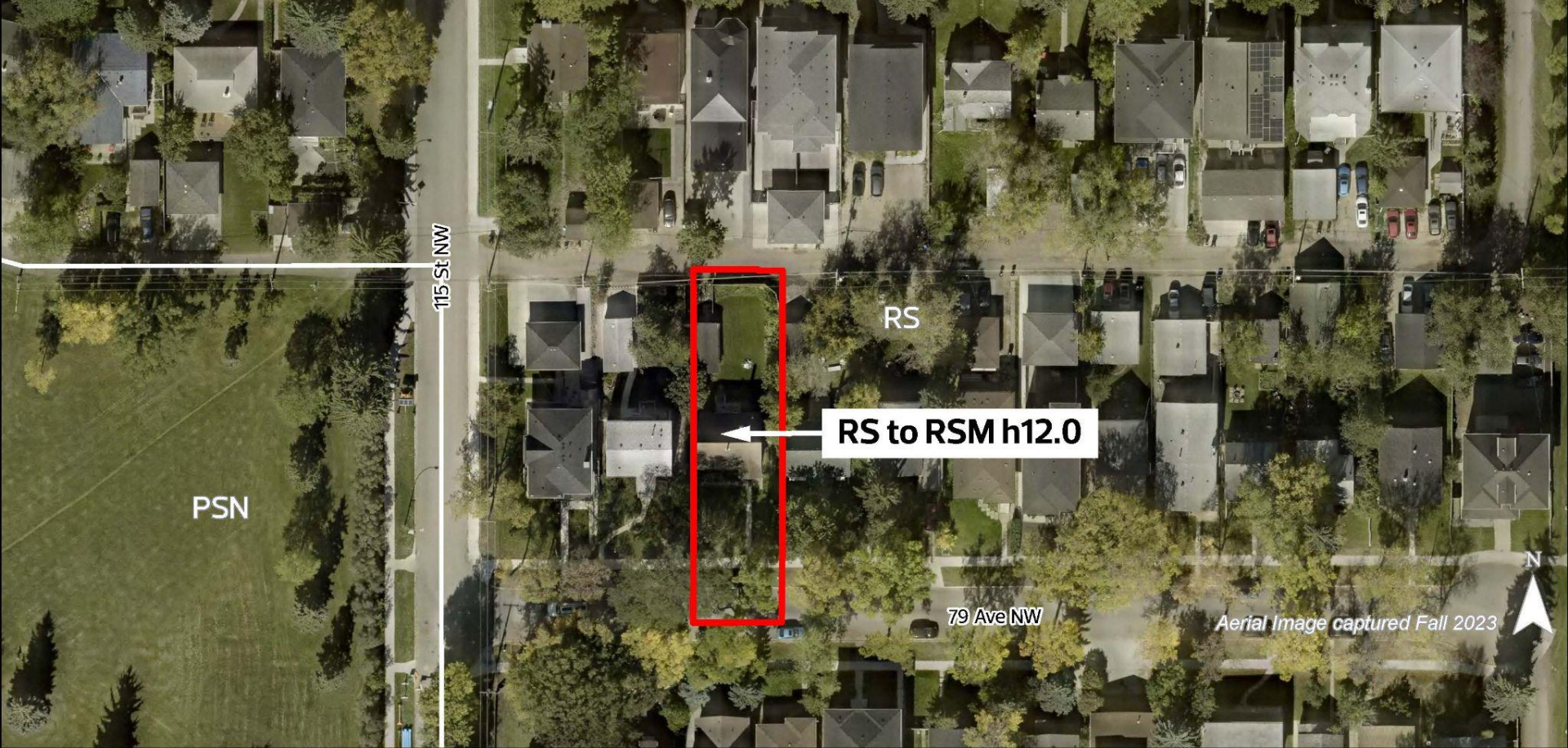
PROPOSED ZONING



CURRENT RS ZONE



PROPOSED RSM H12.0 ZONE



ADMINISTRATION'S RECOMMENDATION: **APPROVAL**