

Charter Bylaw 21151

A Charter Bylaw to amend Charter Bylaw 24014,
being the West Henday District Plan

WHEREAS pursuant to the authority granted to it by the Municipal Government Act, as amended by the *City of Edmonton Charter, 2018 Regulation, AR 39/2018*, on October 2, 2024, the Municipal Council of the City of Edmonton passed Charter Bylaw 24014, being the West Henday District Plan; and

WHEREAS Council found it desirable from time to time to amend the West Henday District Plan; and

WHEREAS Council has amended the West Henday District Plan, through the passage of Charter Bylaw 21043; and

WHEREAS an application was received by Administration to amend the West Henday District Plan;

NOW THEREFORE after due compliance with the relevant provisions of the Municipal Government Act, RSA 2000, c. M-26, as amended, and as amended by the City of Edmonton Charter, 2018 Regulation, AR 39/2018, the Municipal Council of the City of Edmonton duly assembled enacts as follows:

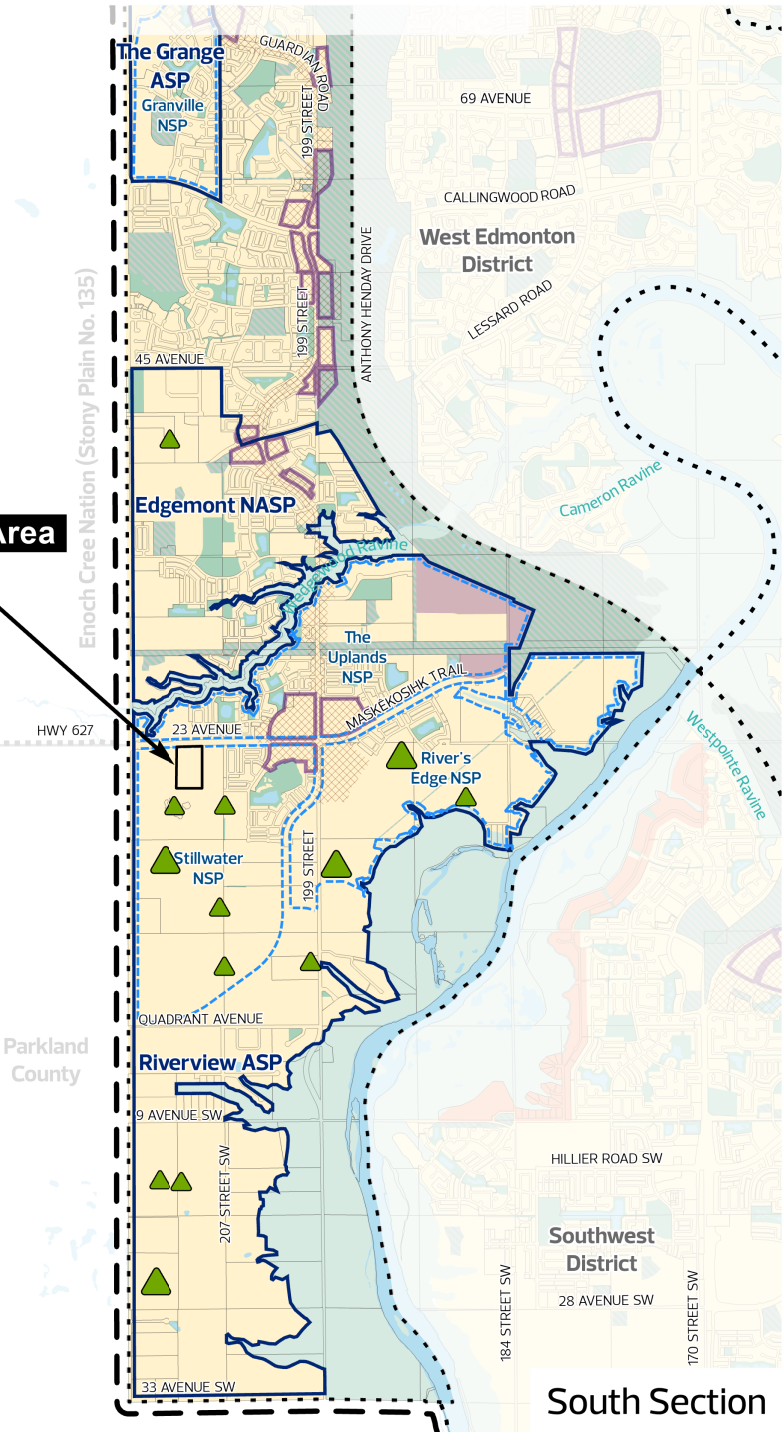
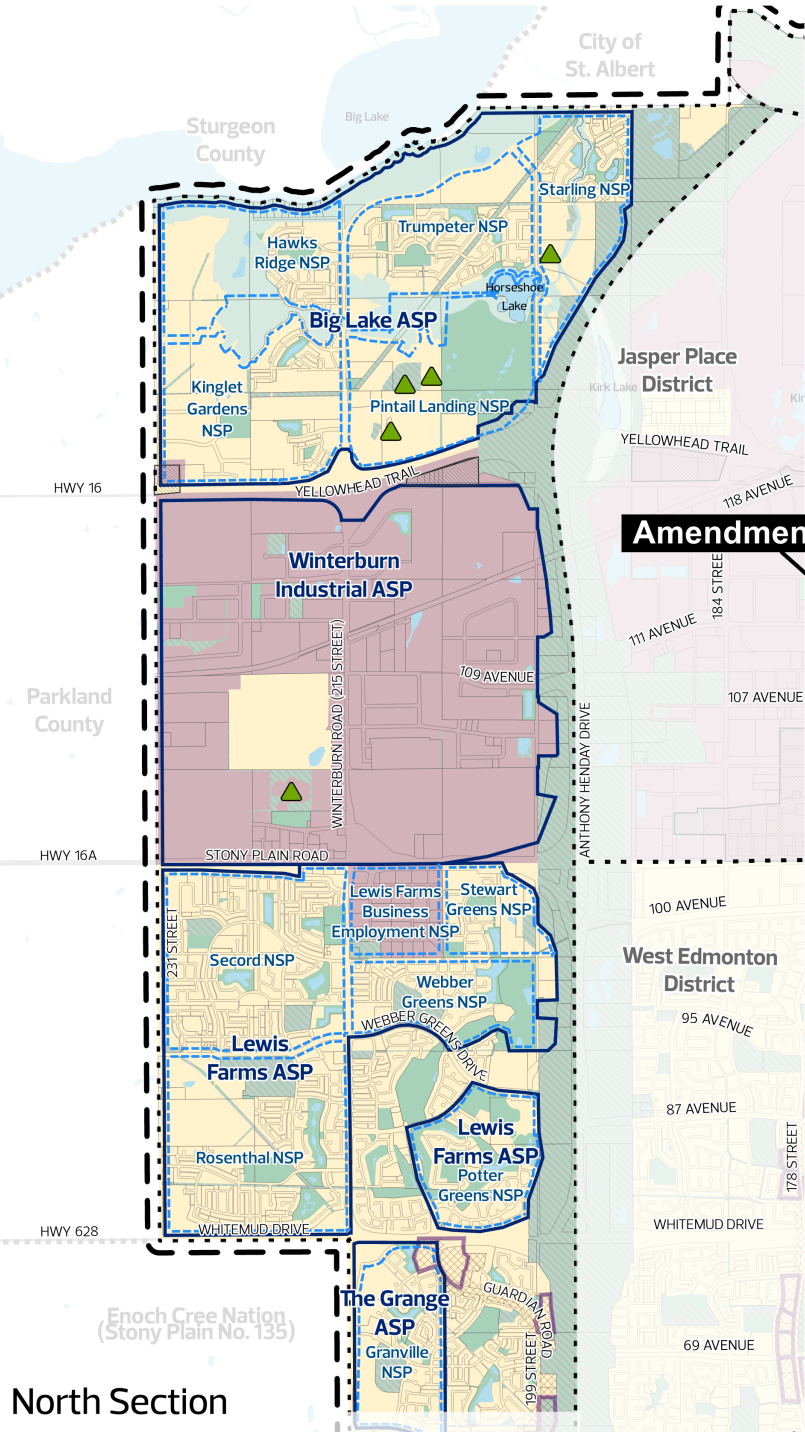
1. That Charter Bylaw 24014, being the West Henday District Plan, is hereby amended as follows:
 - a. Deleting the map “Map 4: Land Use Concept to 1.25 Million” and replacing it with the map “Map 4: Land Use Concept to 1.25 Million”, attached hereto as Schedule “A” and deleting the “amendment area” indicator, and forming part of this bylaw.

| | | |
|-------------------------|--------|---------------|
| READ a first time this | day of | , A. D. 2025; |
| READ a second time this | day of | , A. D. 2025; |
| READ a third time this | day of | , A. D. 2025; |
| SIGNED and PASSED this | day of | , A. D. 2025. |

THE CITY OF EDMONTON

MAYOR

CITY CLERK



General Information

- Amendment Area
- Municipal Boundary
- Adjacent Jurisdiction Boundary
- District Plan Boundary
- Plan in Effect - Area Structure Plan/Area Redevelopment Plan*
- Plan in Effect - Other*

General Land Use

- Urban Mix
- Commercial/Industrial Employment
- Institutional Employment
- Future Non-Residential Area
- Open Space - Current
- Urban Service
- Agriculture
- Waterbody
- North Saskatchewan River Valley and Ravine System

Planned Municipal Park**

- Small (<3 ha)
- Medium (3 ha - 10 ha)
- Large (>10 ha)

Development Areas

- Node or Corridor Area
- Non-Residential Intensification Area

Design Influences

- Large Site
- Commercial Frontage

*Plan in Effect boundaries on this map are conceptual. Consult the Plan in Effect for details.
**Small Planned Municipal Park not shown for areas with Area Structure Plans in effect.