

Charter Bylaw 21143

A Charter Bylaw to amend Charter Bylaw 24011,
being the Southeast District Plan

WHEREAS pursuant to the authority granted to it by the Municipal Government Act, as amended by the *City of Edmonton Charter, 2018 Regulation, AR 39/2018*, on October 2, 2024, the Municipal Council of the City of Edmonton passed Charter Bylaw 24011, being the Southeast District Plan; and

WHEREAS Council found it desirable from time to time to amend the Southeast District Plan; and

WHEREAS an application was received by Administration to amend the Southeast District Plan;

NOW THEREFORE after due compliance with the relevant provisions of the Municipal Government Act, RSA 2000, c. M-26, as amended, and as amended by the City of Edmonton Charter, 2018 Regulation, AR 39/2018, the Municipal Council of the City of Edmonton duly assembled enacts as follows:

1. That Charter Bylaw 24011, being the Southeast District Plan, is hereby amended as follows:
 - a. Deleting the map “Map 1: Heritage and Culture” and replacing it with the map “Map 1: Heritage and Culture”, attached hereto as Schedule “A” and deleting the “amendment area” indicator, and forming part of this bylaw;
 - b. Deleting the map “Map 2: Activating Growth to 1.25 Million” and replacing it with the map “Map 2: Activating Growth to 1.25 Million”, attached hereto as Schedule “B” and deleting the “amendment area” indicator, and forming part of this bylaw;
 - c. Deleting the map “Map 3: Nodes and Corridors” and replacing it with the map “Map 3: Nodes and Corridors”, attached hereto as Schedule “C” and deleting the “amendment area” indicator, and forming part of this bylaw;
 - d. Deleting the map “Map 4: Land Use Concept to 1.25 Million” and replacing it with the map “Map 4: Land Use Concept to 1.25 Million”, attached hereto as Schedule “D” and deleting the “amendment area” indicator, and forming part of this bylaw;

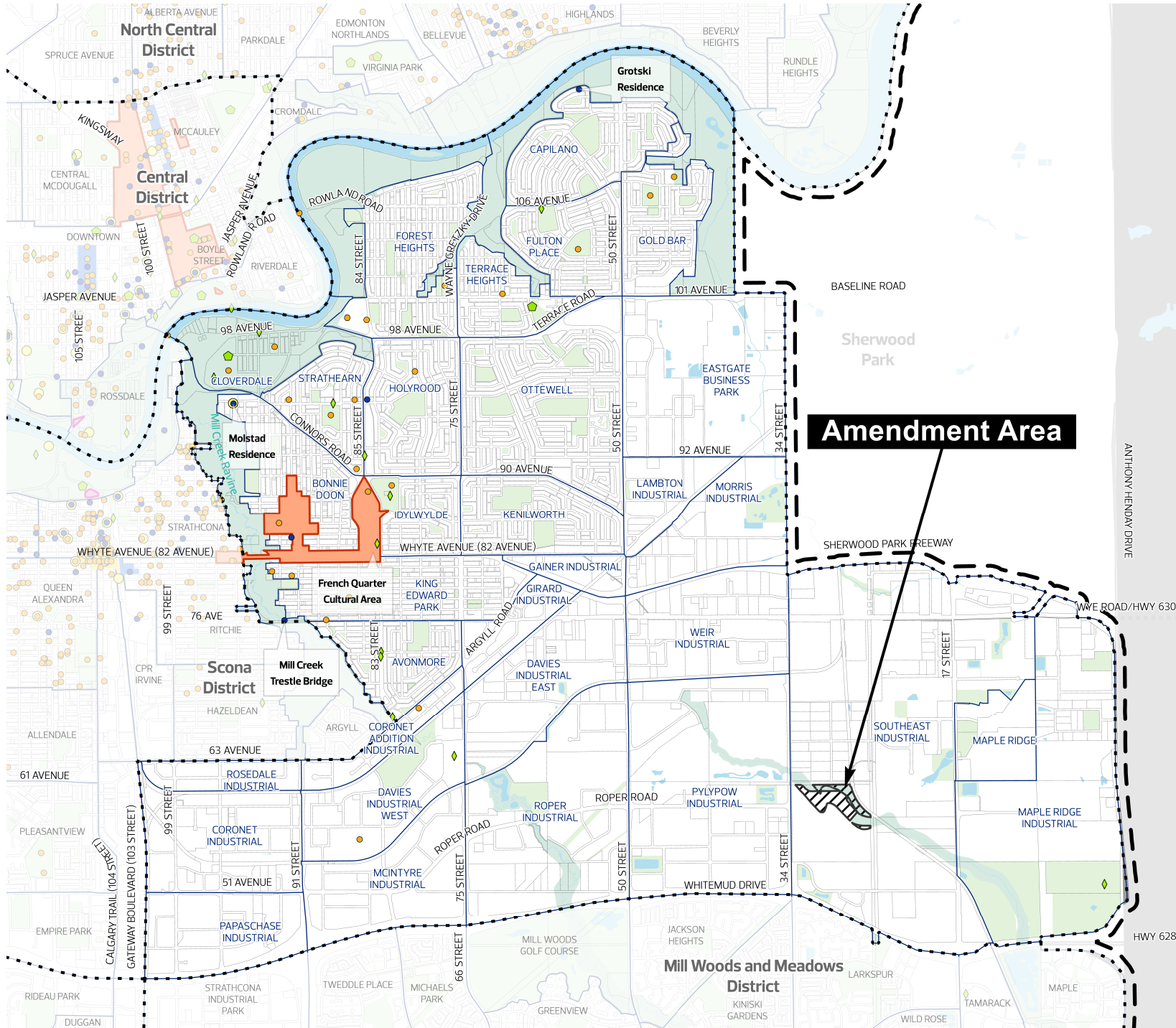
- e. Deleting the map “Map 5: Open Space and Natural Areas to 1.25 Million” and replacing it with the map “Map 5: Open Space and Natural Areas to 1.25 Million”, attached hereto as Schedule “E” and deleting the “amendment area” indicator, and forming part of this bylaw;
- f. Deleting the map “Map 6: Active Transportation to 1.25 Million” and replacing it with the map “Map 6: Active Transportation to 1.25 Million”, attached hereto as Schedule “F” and deleting the “amendment area” indicator, and forming part of this bylaw; and
- g. Deleting the map “Map 7: Transit to 1.25 Million” and replacing it with the map “Map 7: Transit to 1.25 Million”, attached hereto as Schedule “G” and deleting the “amendment area” indicator, and forming part of this bylaw.
- h. Deleting the map “Map 8: Area-Specific Policy Subareas” and replacing it with the map “Map 8: Area-Specific Policy Subareas” attached hereto as Schedule “H” and deleting the “amendment area” indicator, and forming part of this bylaw.

READ a first time this	day of	, A. D. 2025;
READ a second time this	day of	, A. D. 2025;
READ a third time this	day of	, A. D. 2025;
SIGNED and PASSED this	day of	, A. D. 2025.

THE CITY OF EDMONTON

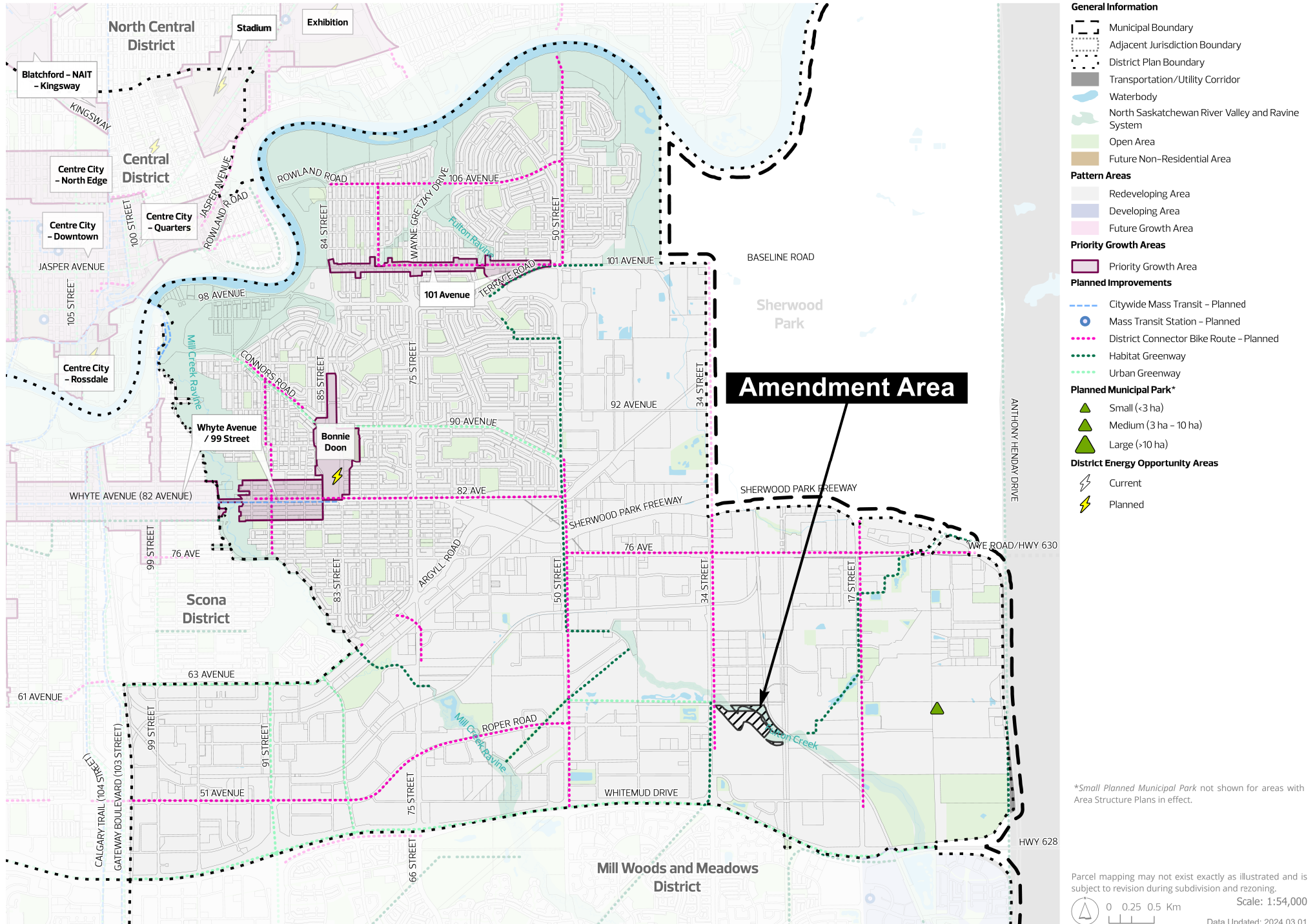
MAYOR

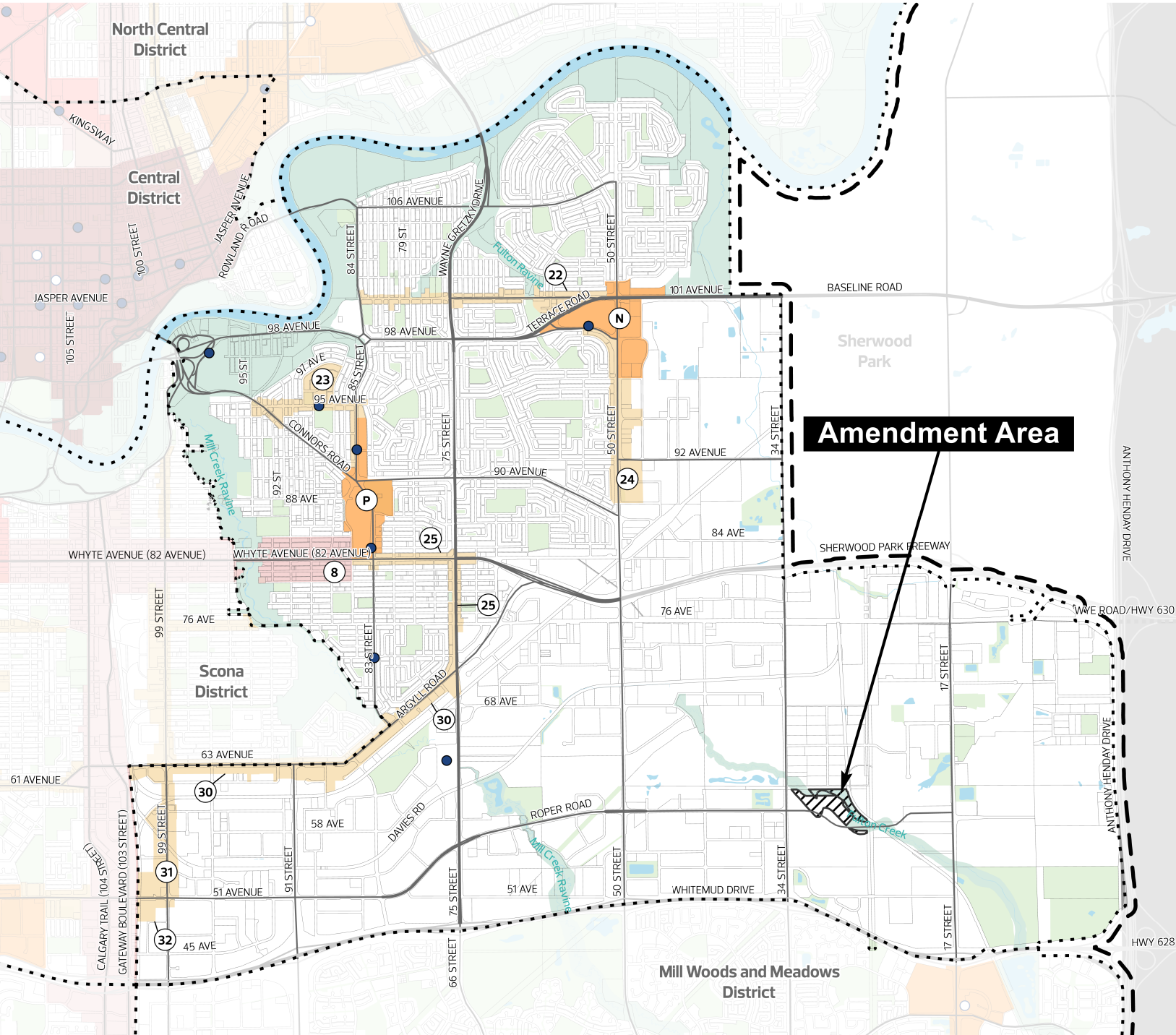
CITY CLERK



- General Information**
- Municipal Boundary
 - Adjacent Jurisdiction Boundary
 - District Plan Boundary
 - Neighbourhood Boundary
 - Transportation/Utility Corridor
 - Waterbody
 - North Saskatchewan River Valley and Ravine System
 - Open Area
- City-Owned Public Art**
- Art Work
 - Multiple Art Works
- Built Heritage Sites**
- Inventory of Historic Resources in Edmonton
 - Municipal Historic Resource
 - Provincial Historic Resource
- Heritage Character Areas**
- Municipal
 - Provincial
- Cultural Features**
- Known Indigenous Cultural Heritage Feature
 - Other Cultural Area

Map 2: Activating Growth to 1.25 Million





General Information

- Municipal Boundary
- Adjacent Jurisdiction Boundary
- District Plan Boundary
- Transportation/Utility Corridor
- Arterial Roadway
- Freeway/Expressway/Highway
- Waterbody
- North Saskatchewan River Valley and Ravine System
- Open Area

Transit

- Mass Transit Station – Current
- Mass Transit Station – Planned

Nodes and Corridors

- Centre City
- Major Node
- District Node
- Capilano
- Bonnie Doon
- Primary Corridor
- Whyte Avenue
- Secondary Corridor
- 101 Avenue
- 95 Avenue
- 50 Street
- Whyte Avenue/75 Street
- Argyll Road/63 Avenue
- 99 Street
- 51 Avenue

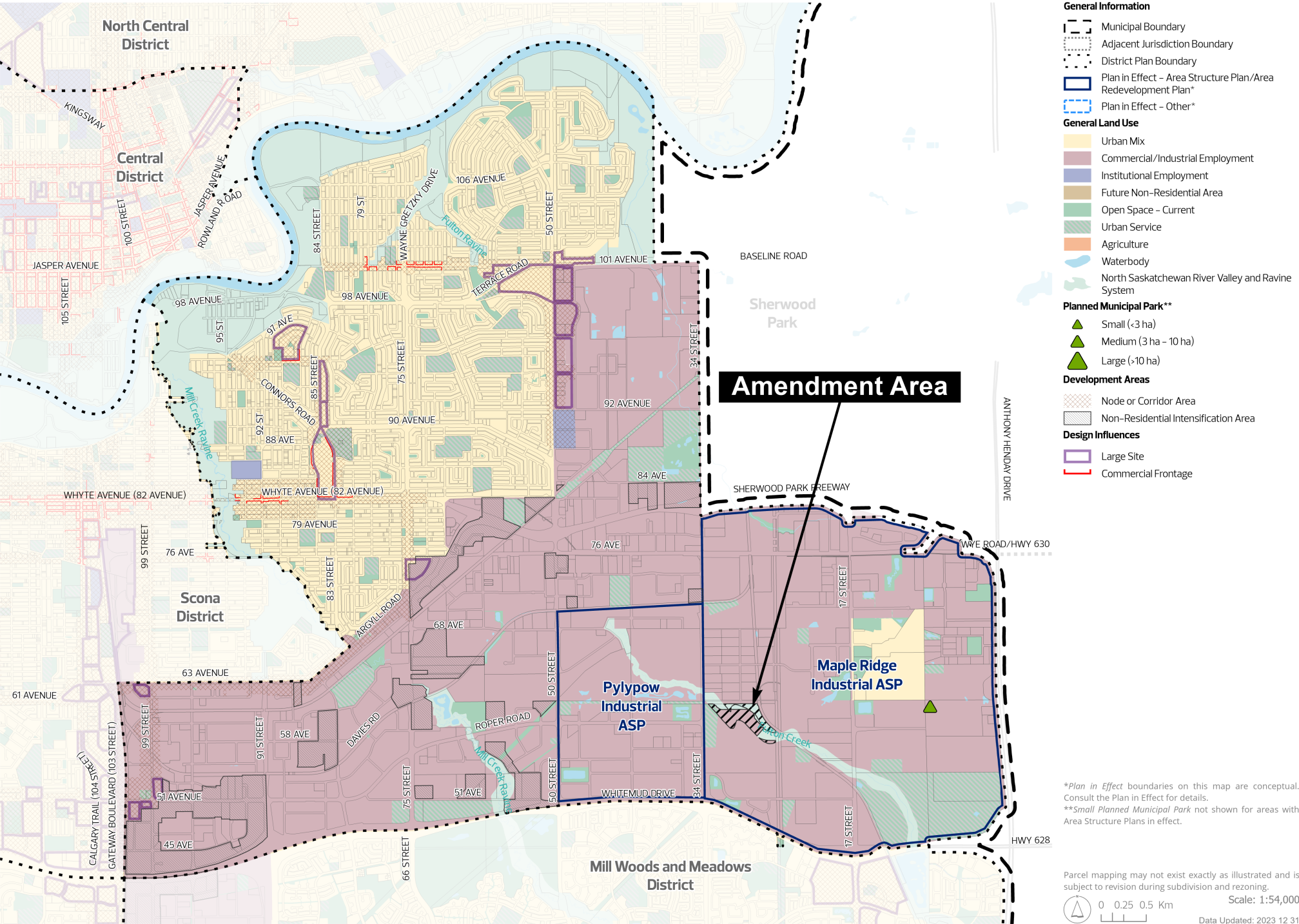
Letter/number labels as per The City Plan

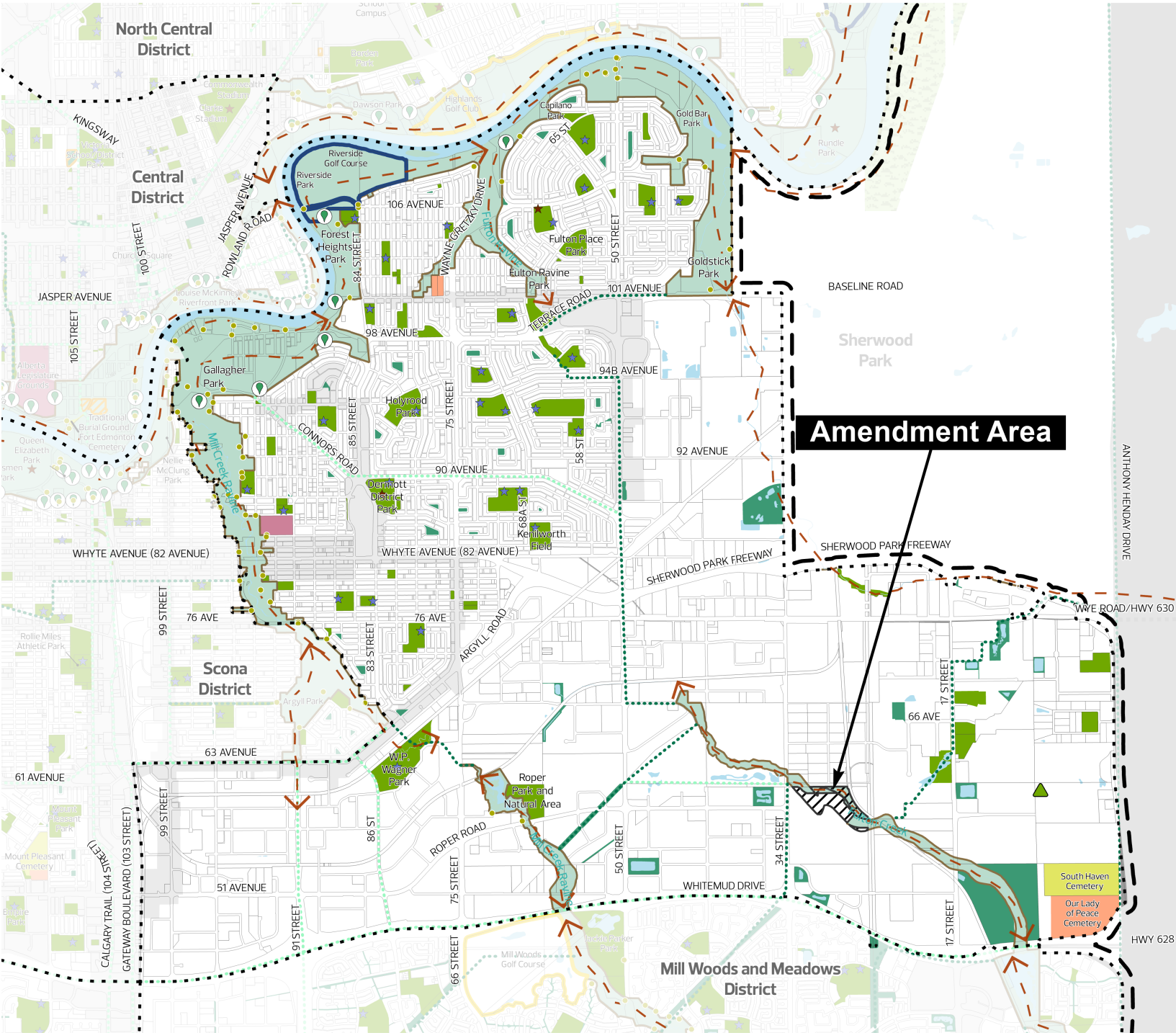
Note that some roadway alignments are conceptual. Refer to additional Plans in Effect, where applicable, for details.

Parcel mapping may not exist exactly as illustrated and is subject to revision during subdivision and rezoning.

Scale: 1:54,000

Data Updated: 2024 03 01





General Information

- Municipal Boundary
- Adjacent Jurisdiction Boundary
- District Plan Boundary
- Node or Corridor Area
- Transportation/Utility Corridor*

Open Space Connectors and Features

- River Valley Viewpoint - Current
- River Valley Viewpoint - Planned
- River Valley Trail Access
- Waterbody
- North Saskatchewan River Valley and Ravine System
- Habitat Greenway
- Urban Greenway
- Major Ecological Connection

Municipal Open Space

- Park- Current**
- Open Space - Supplementary**
- Municipal Golf Course
- Municipal Cemetery

Planned Municipal Park***

- Small (<3 ha)
- Medium (3 ha - 10 ha)
- Large (>10 ha)

Community Assets

- Recreation Centre
- School

Non-Municipal Open Space

- Open Space - Other
- Provincial Park/Protected Area
- Private Golf Course
- Private Cemetery

Other Open Spaces

- Special Purpose Facility

*Transportation/Utility Corridor is not comprehensive and for illustrative purposes only.

**Park - Current and Open Space - Supplementary may include Urban Service uses.

***Planned Municipal Park locations are conceptual. Refer to the Plan in Effect or other applicable plans for details. Small Planned Municipal Park not shown for areas with Area Structure Plans in effect.

Parcel mapping may not exist exactly as illustrated and is subject to revision during subdivision and rezoning.

Scale: 1:54,000

0 0.25 0.5 Km

Data Updated: 2024 03 01

