

The City of Edmonton

Bylaw 21110

Access Closures to Support 2025 Roadway Construction

WHEREAS the Municipal Council of the City of Edmonton may pass a Bylaw pursuant to Section 28 of the *Highways Development and Protection Act*, S.A. 2004, c. H-8.5 for the purpose of removing any access to a controlled street; and

WHEREAS City Council has considered the proposed closure and has agreed that it is in the public interest to pass this Bylaw;

NOW THEREFORE the Municipal Council of the City of Edmonton, duly assembled, enacts as follows:

1. All means of access to or from a controlled street generally as illustrated on the attached Schedules “A1” to “A19”, are hereby closed.

READ a first time this _____ day of _____, A.D. 2025;

READ a second time this _____ day of _____, A.D. 2025;

READ a third time this _____ day of _____, A.D. 2025;

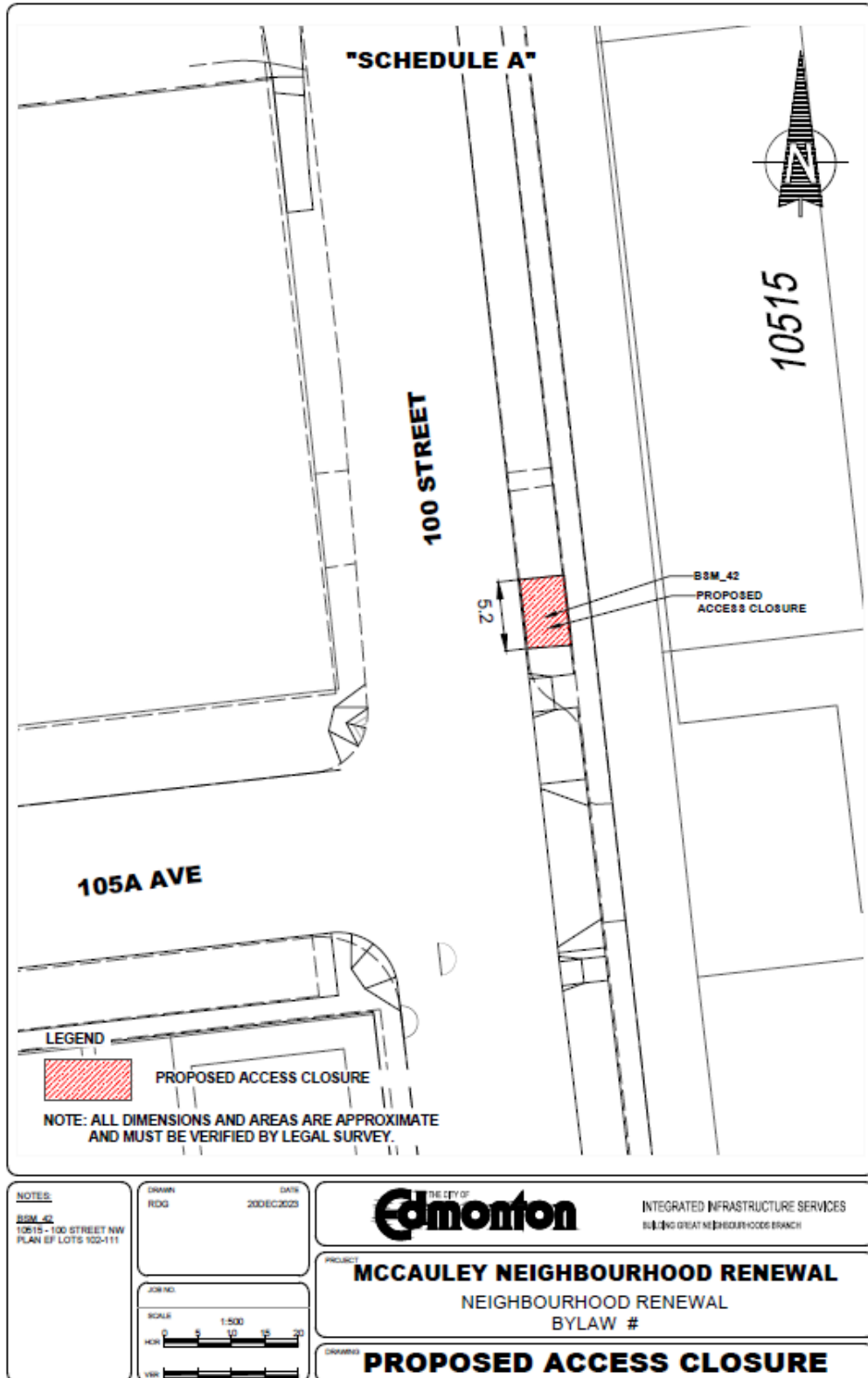
SIGNED and PASSED this _____ day of _____, A.D. 2025.

THE CITY OF EDMONTON

MAYOR

CITY CLERK

SCHEDULE "A1" TO BYLAW 21110



"SCHEDULE A"

108 AVE

98 STREET

10769

10000

BSM_45

PROPOSED ACCESS CLOSURE

5.6

LEGEND

PROPOSED ACCESS CLOSURE

NOTE: ALL DIMENSIONS AND AREAS ARE APPROXIMATE AND MUST BE VERIFIED BY LEGAL SURVEY.

NOTES:

BSM_45

10769 98 STREET

PLAN 985617 LOTS B,C

DRAWN:

RDG

DATE:

2006/02/20

THE CITY OF

Edmonton

INTEGRATED INFRASTRUCTURE SERVICES

BUILDING GREAT NEIGHBOURHOODS BRANCH

PROJECT:

MCCAULEY NEIGHBOURHOOD RENEWAL

NEIGHBOURHOOD RENEWAL

BYLAW #

DRAWINGS:

PROPOSED ACCESS CLOSURE

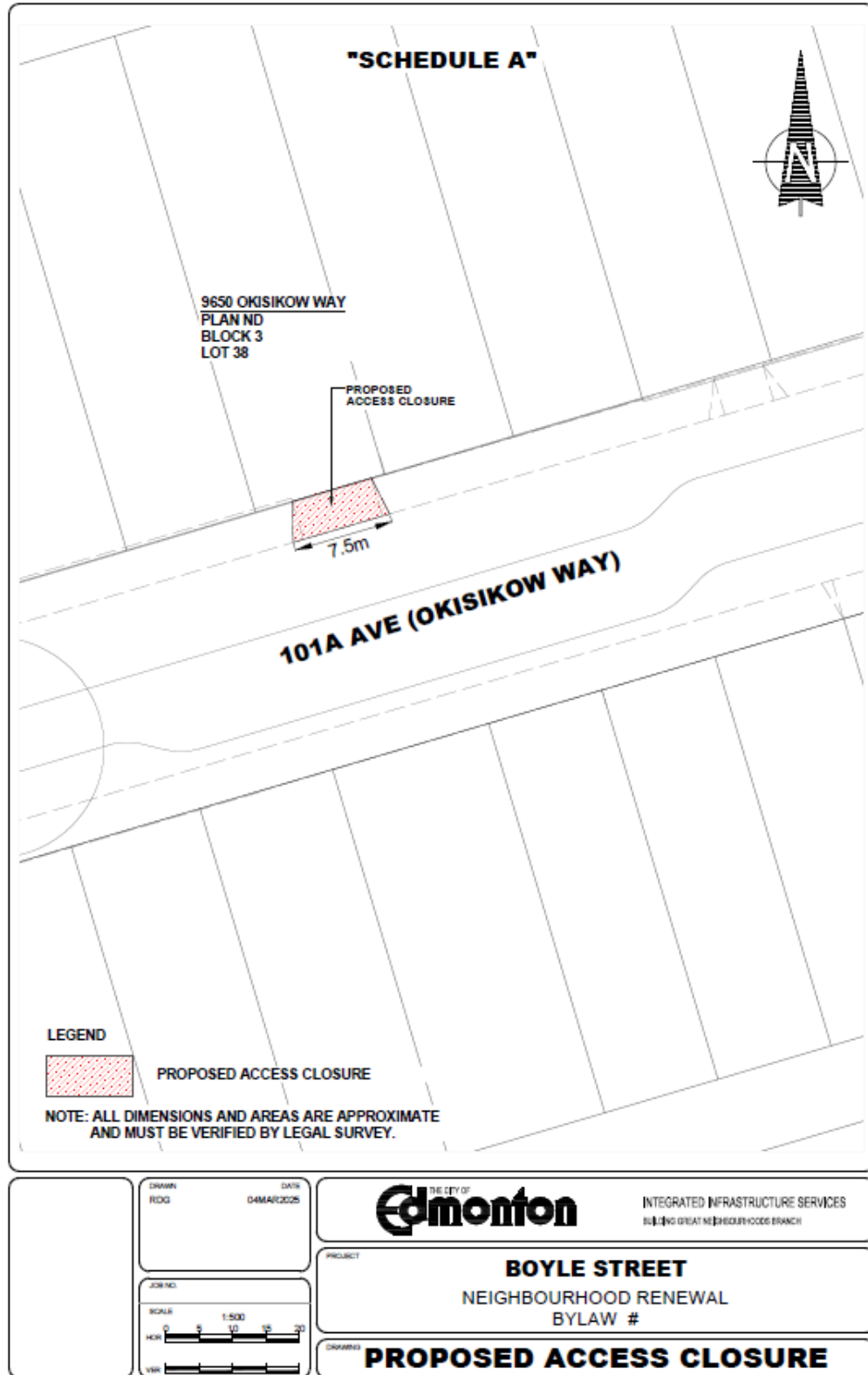
SCALE:

1:500

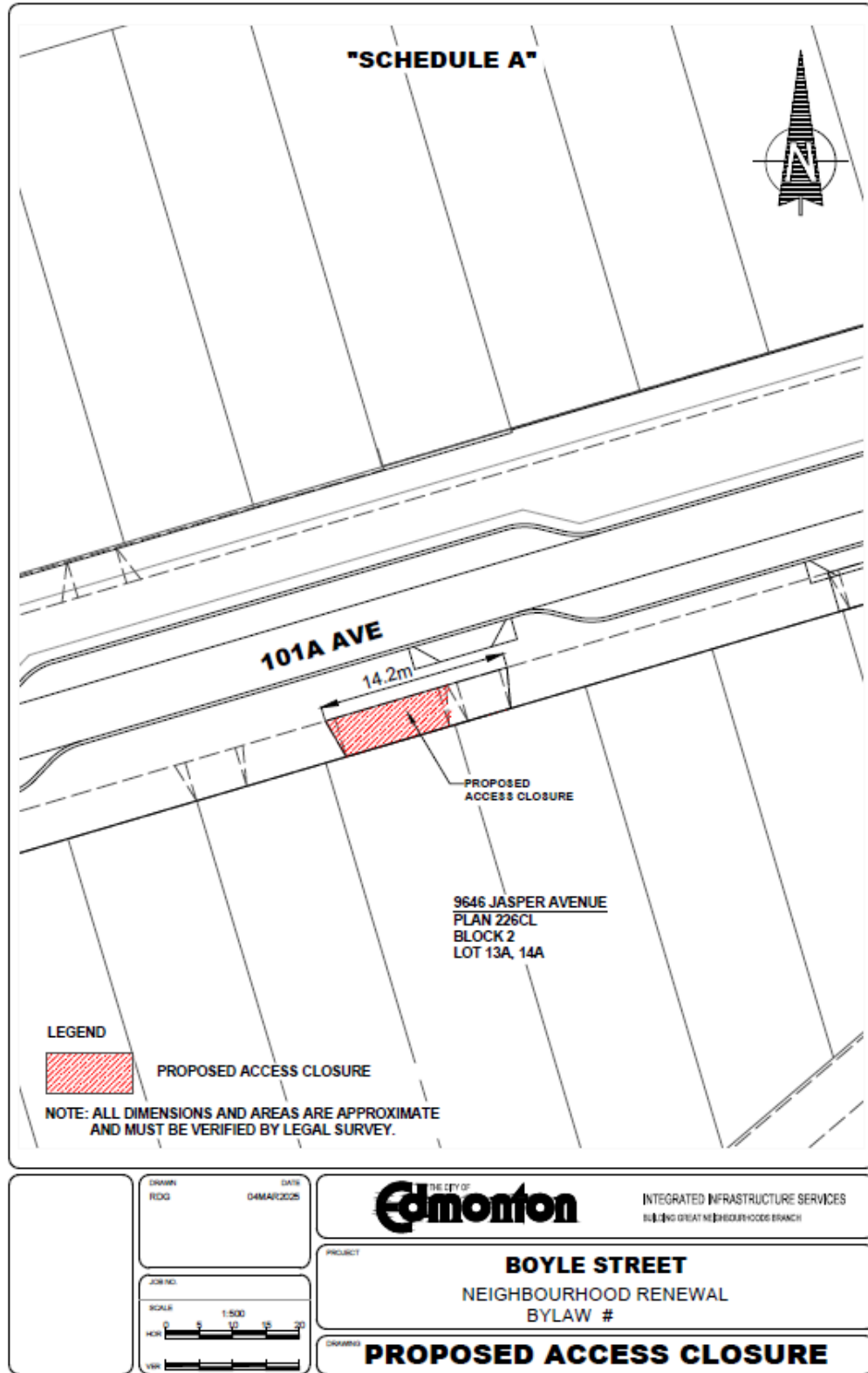
0 5 10 20

M

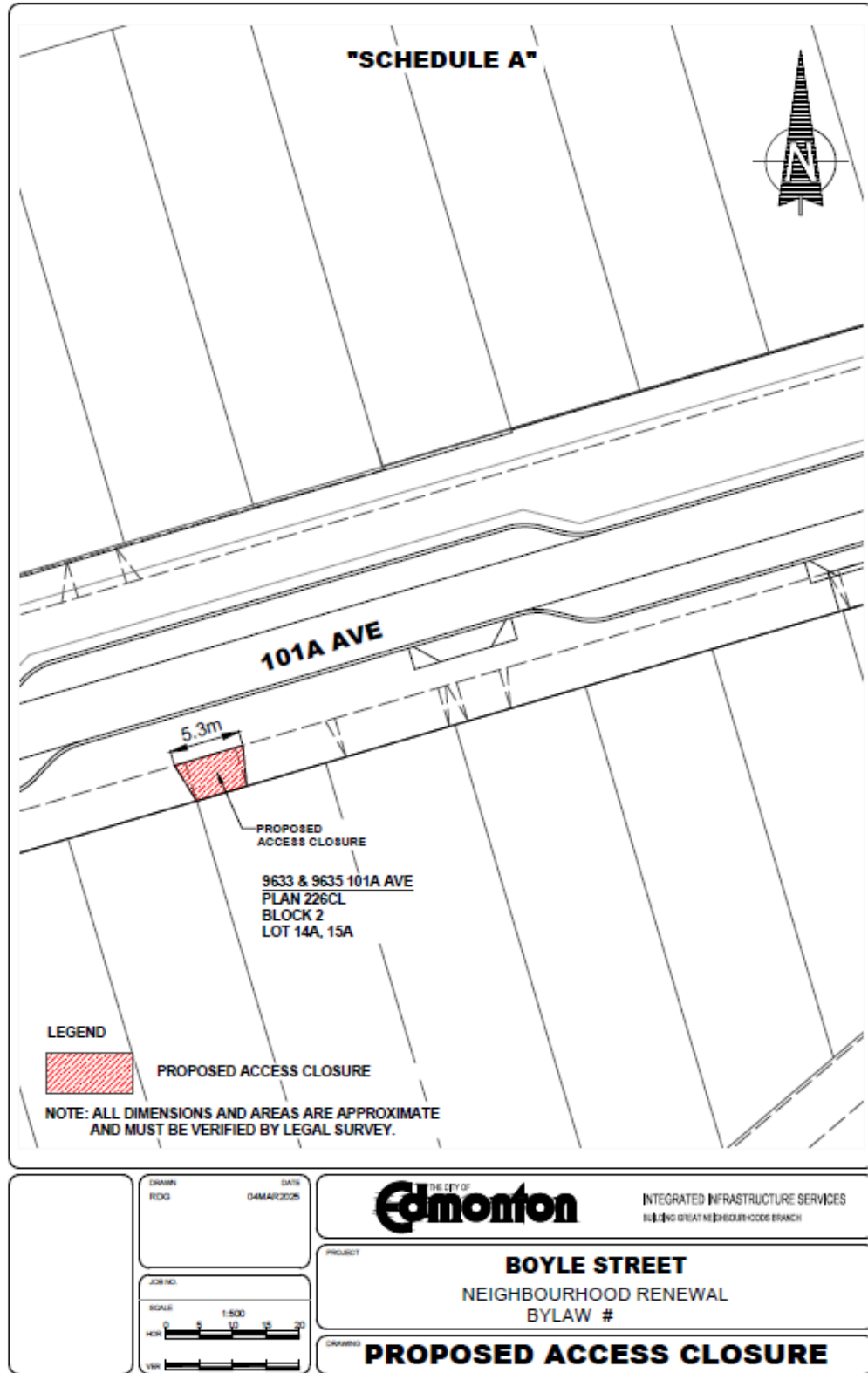
SCHEDULE "A3" TO BYLAW 21110



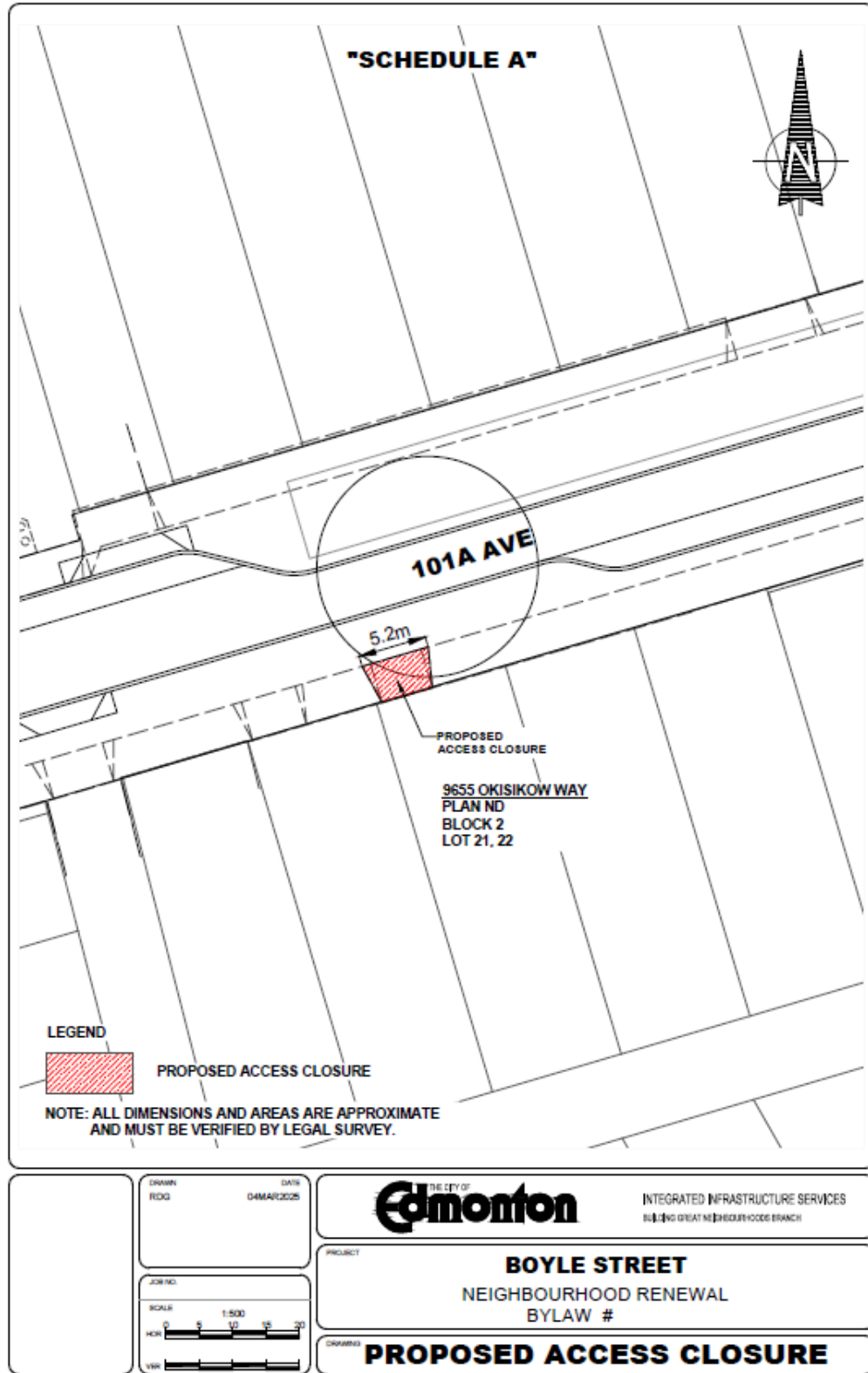
SCHEDULE "A4" TO BYLAW 21110



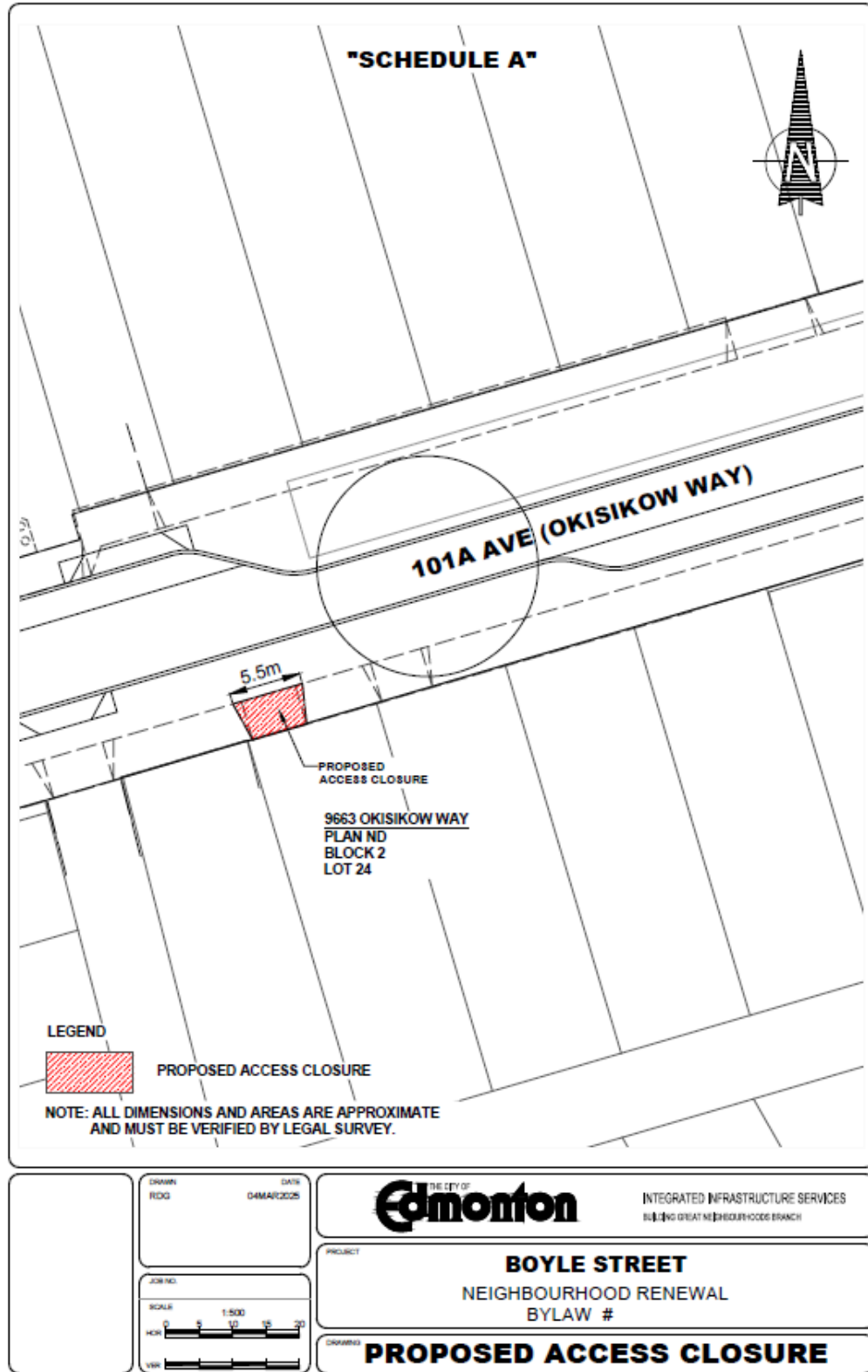
SCHEDULE "A5" TO BYLAW 21110



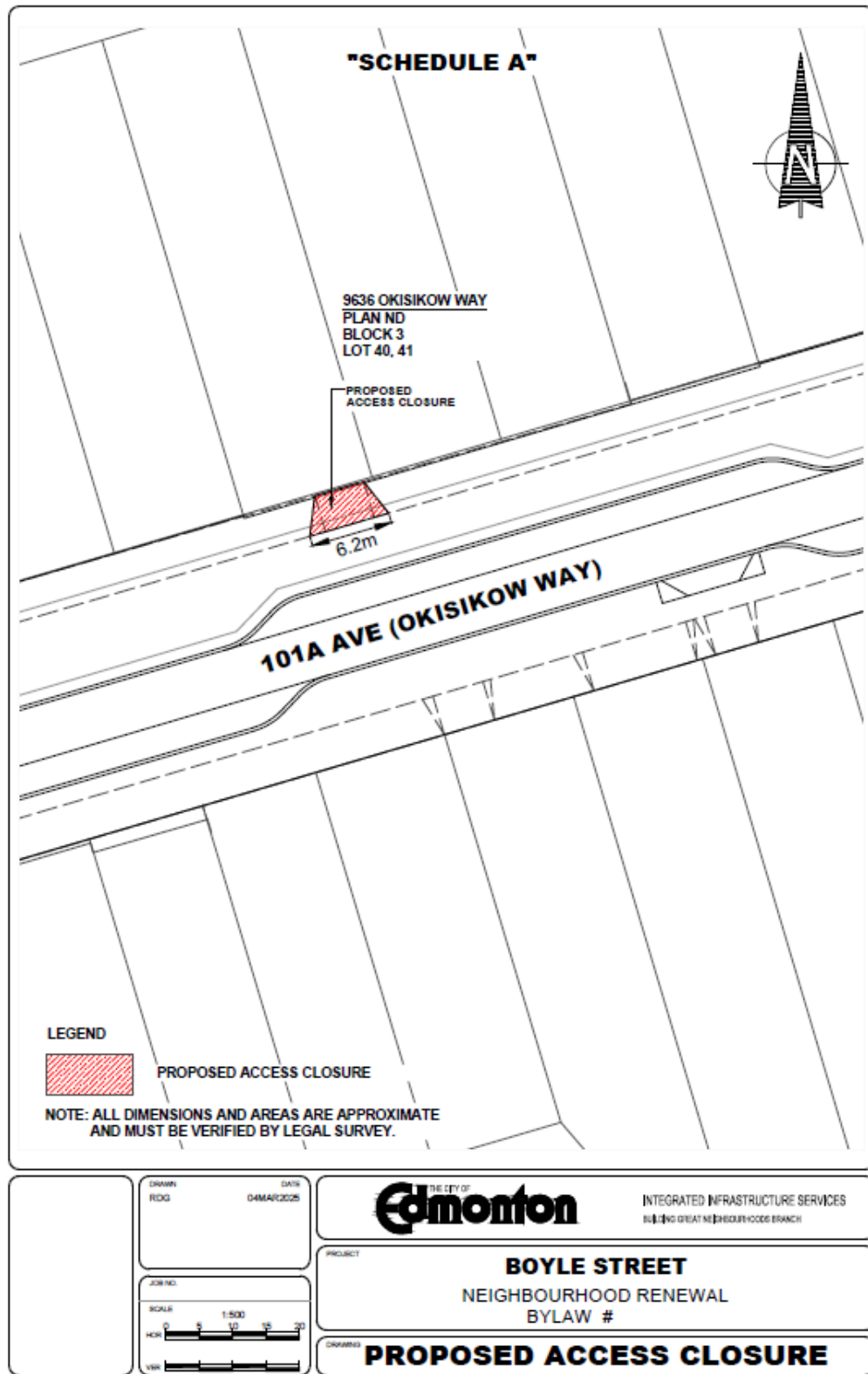
SCHEDULE "A6" TO BYLAW 21110



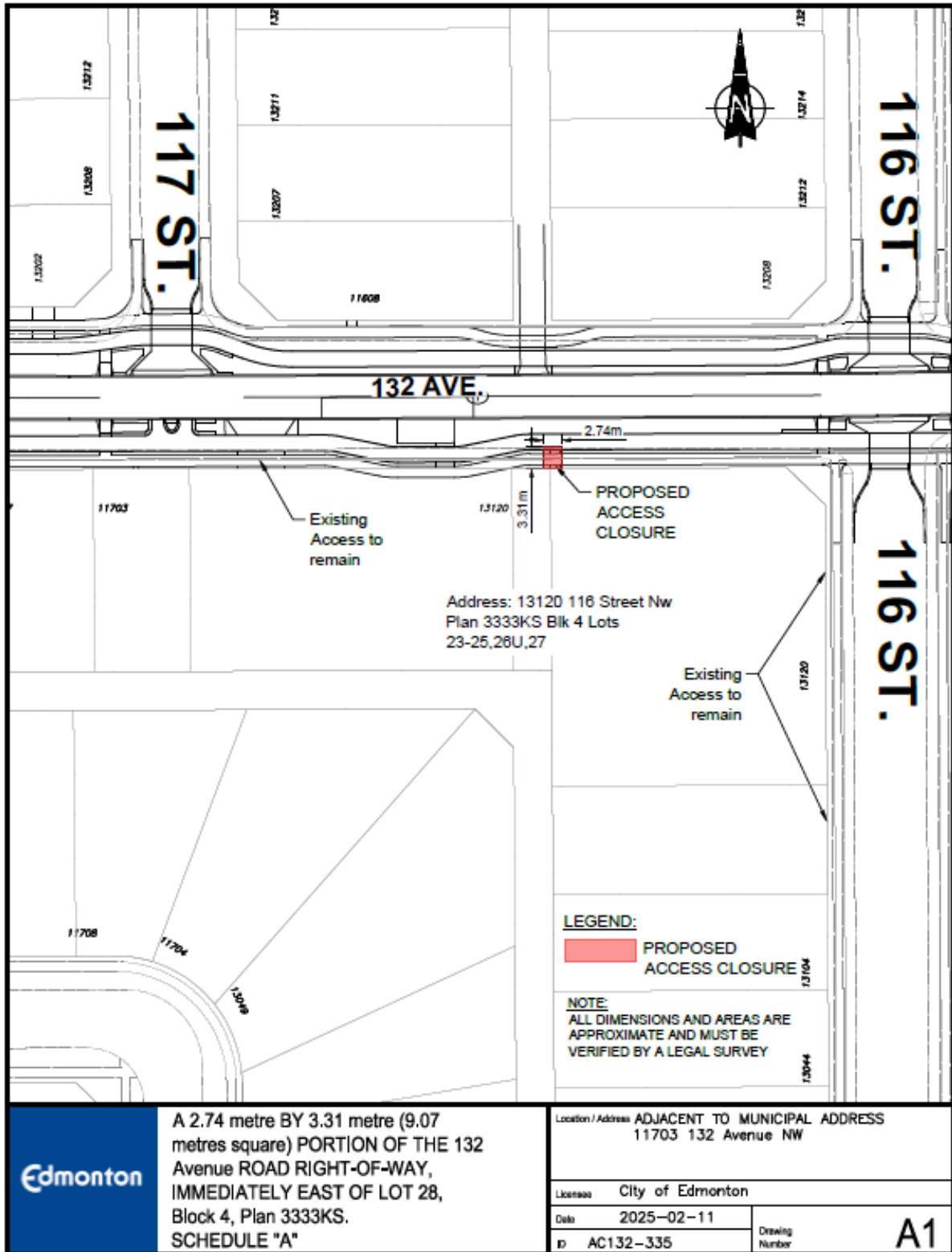
SCHEDULE "A7" TO BYLAW 21110



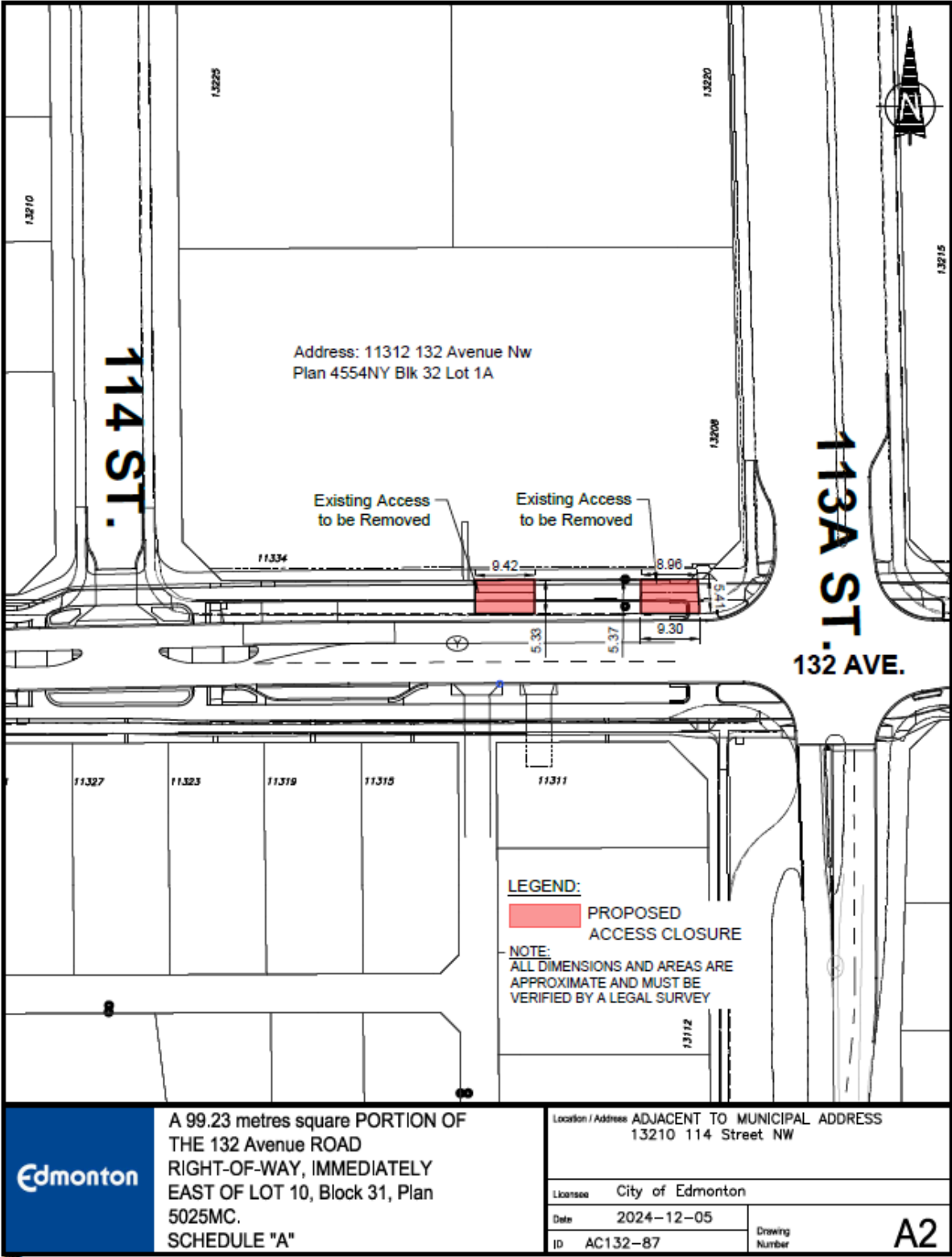
SCHEDULE "A8" TO BYLAW 21110



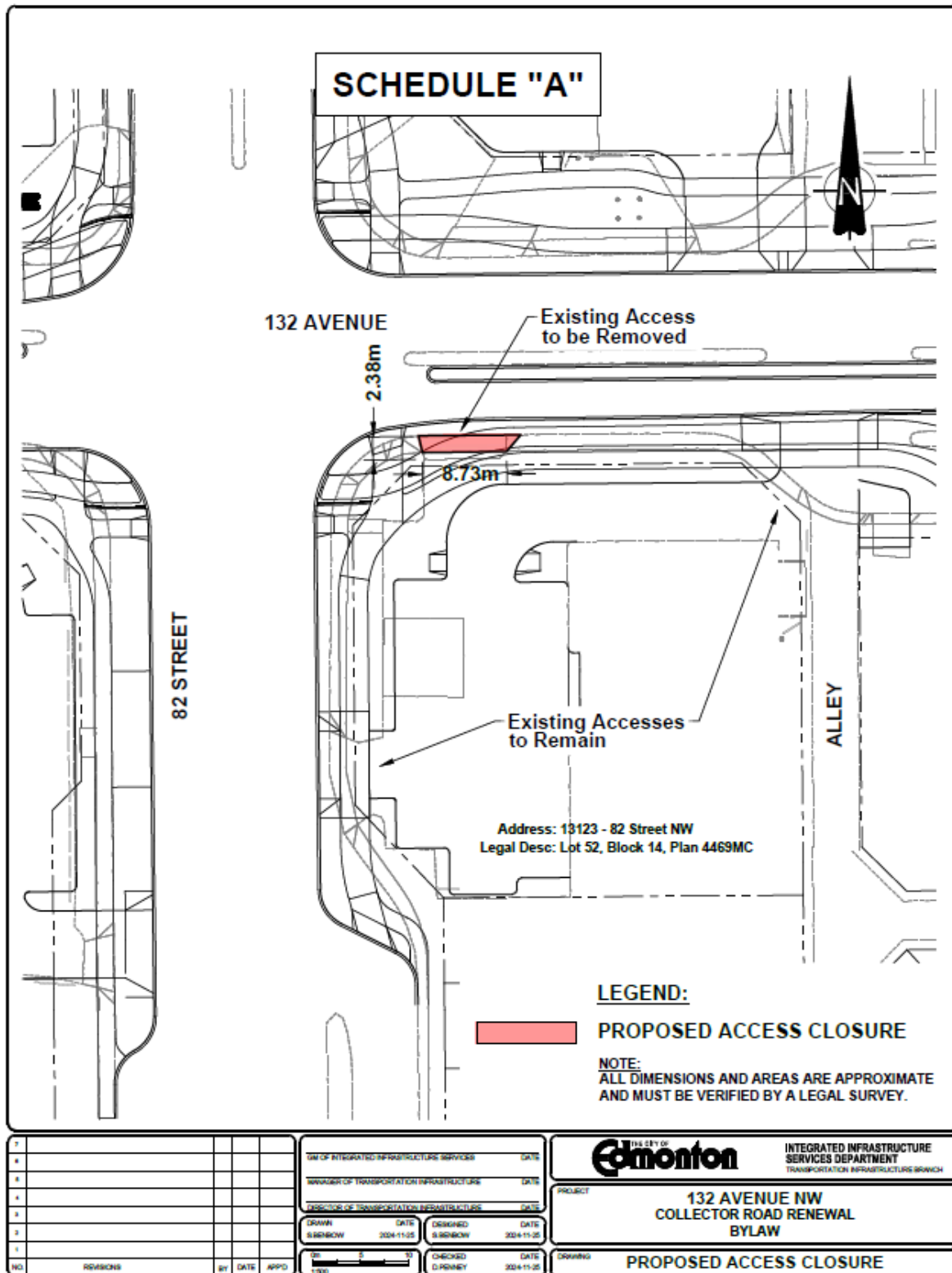
SCHEDULE "A10" TO BYLAW 21110



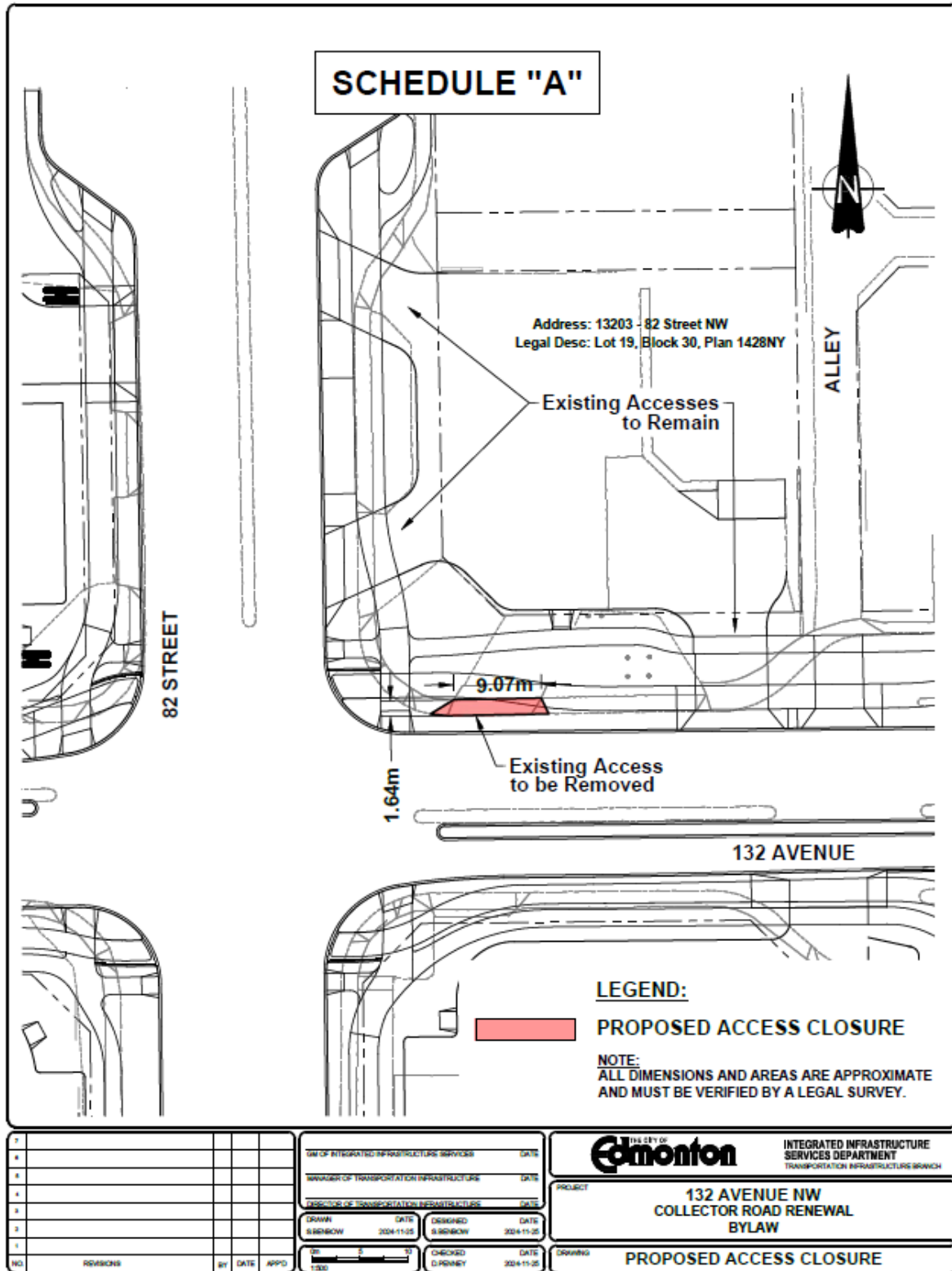
SCHEDULE "A11" TO BYLAW 21110



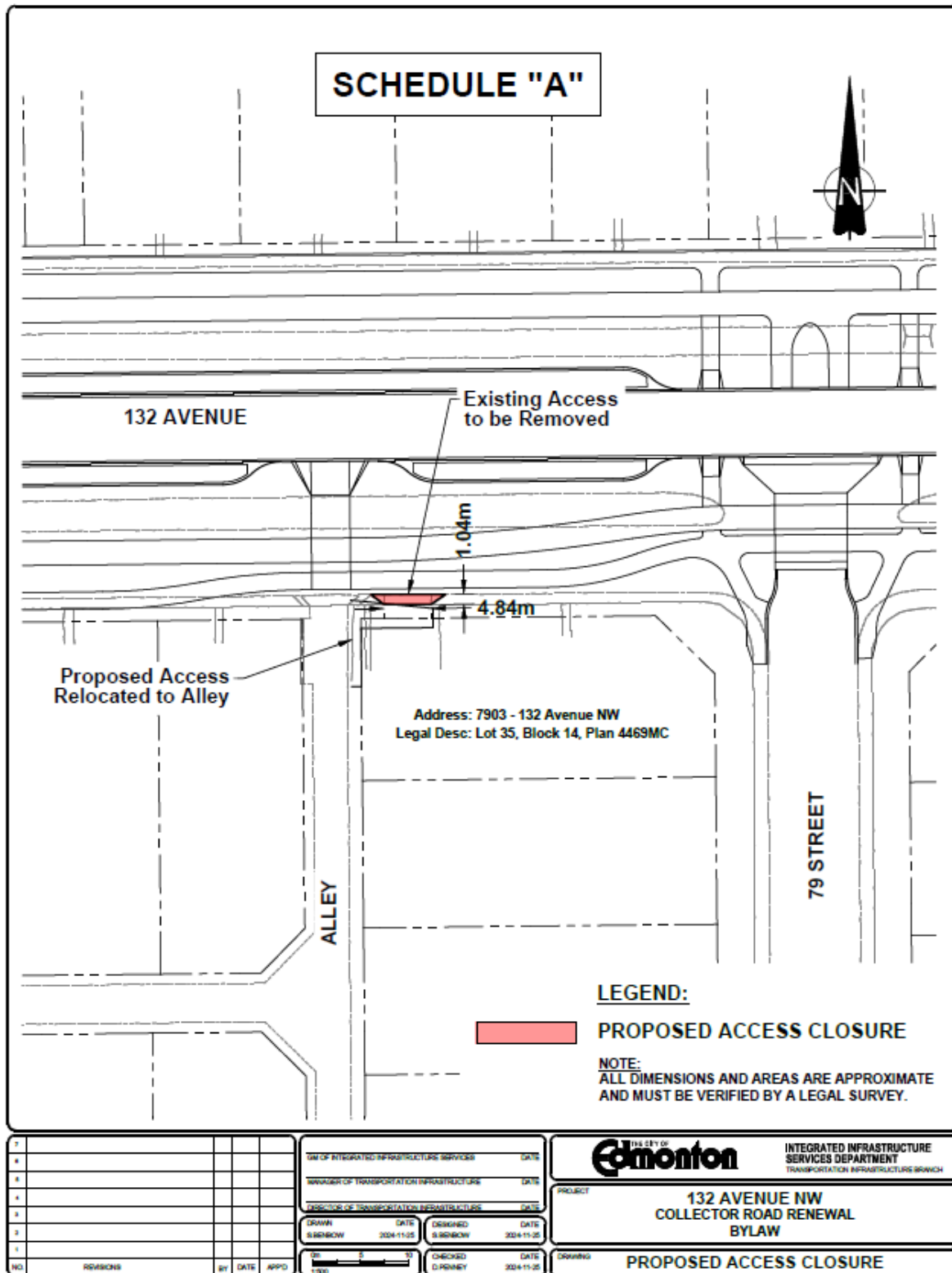
SCHEDULE “A12” TO BYLAW 21110



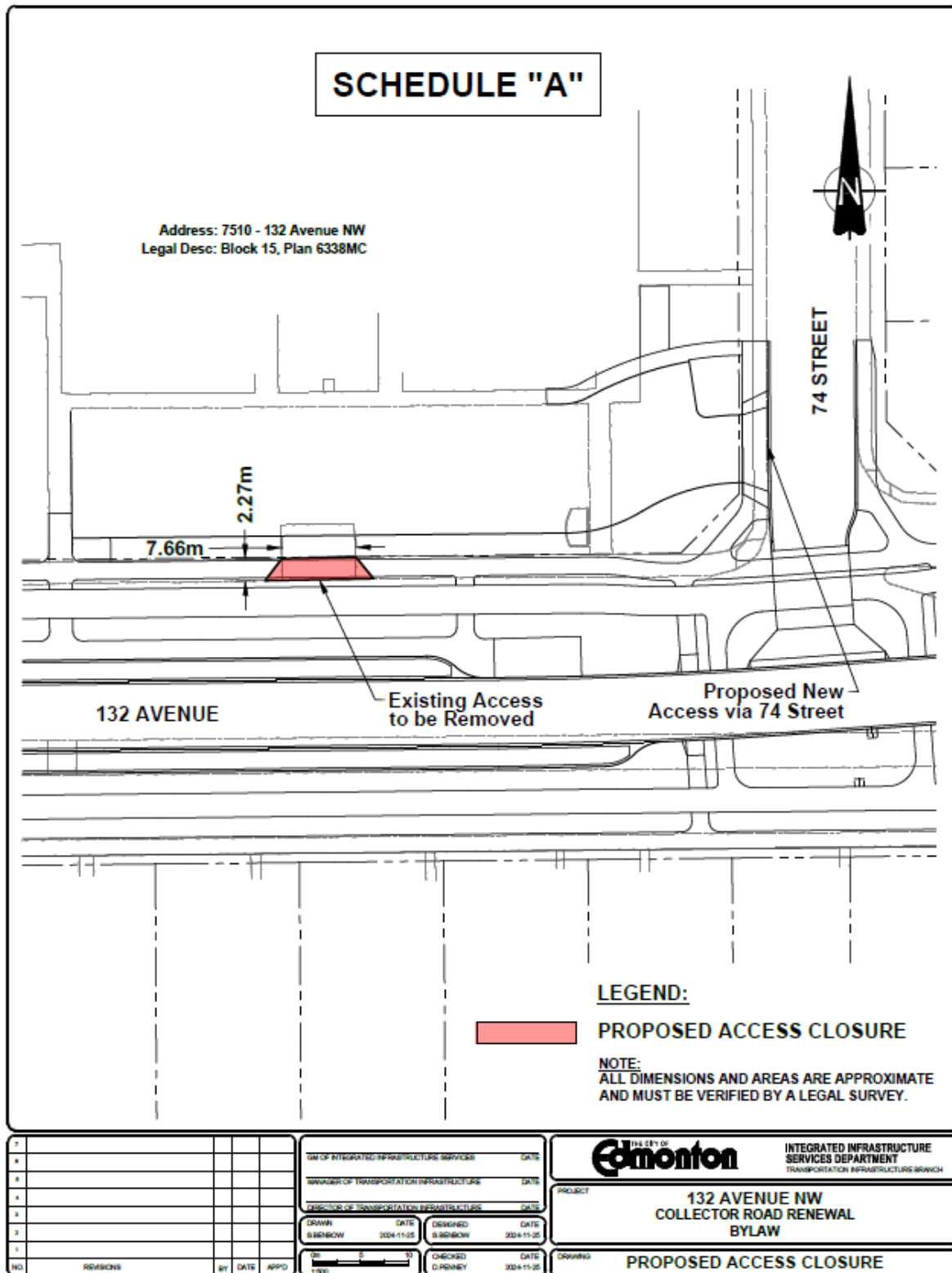
SCHEDULE "A13" TO BYLAW 21110



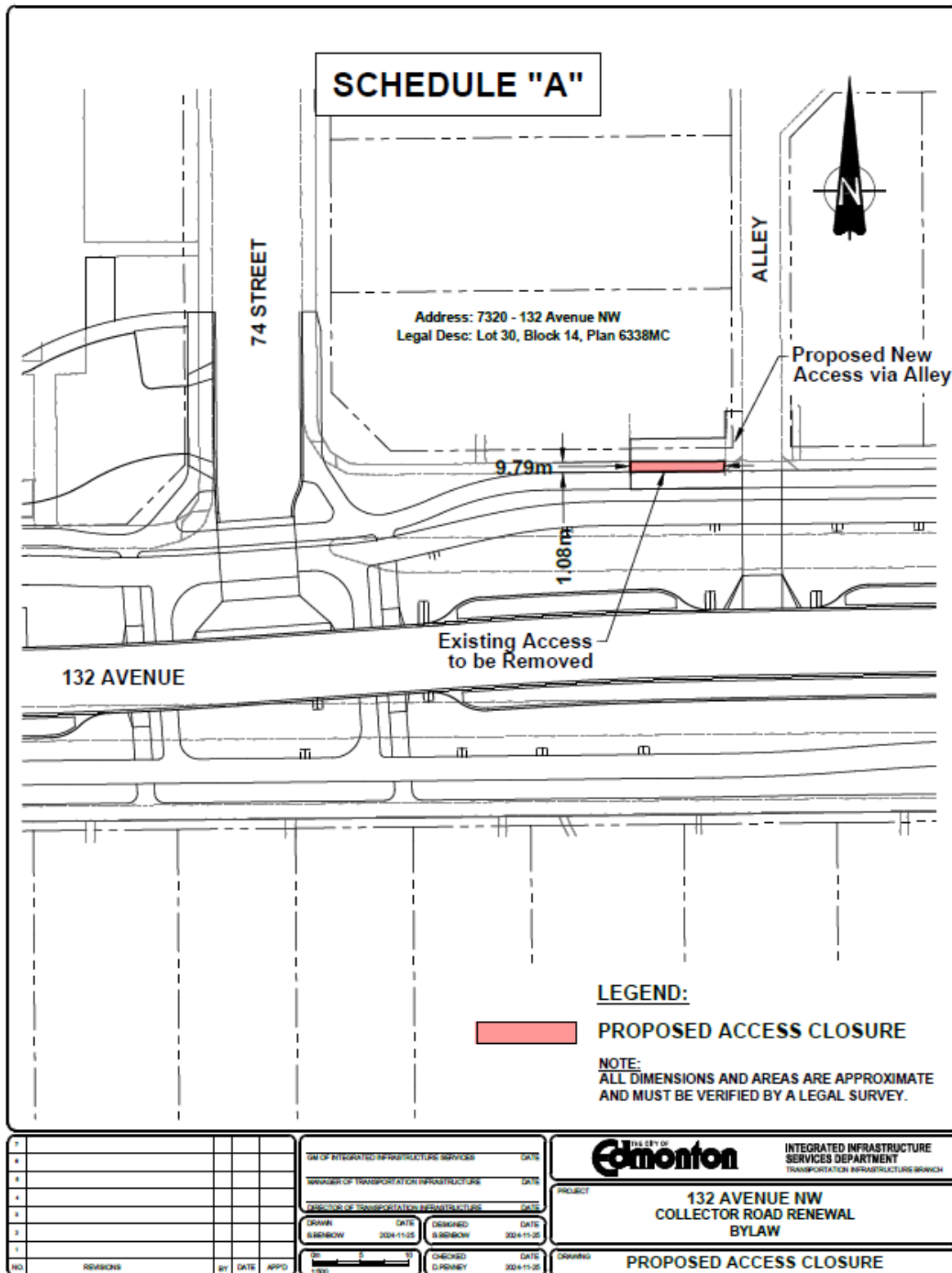
SCHEDULE “A14” TO BYLAW 21110



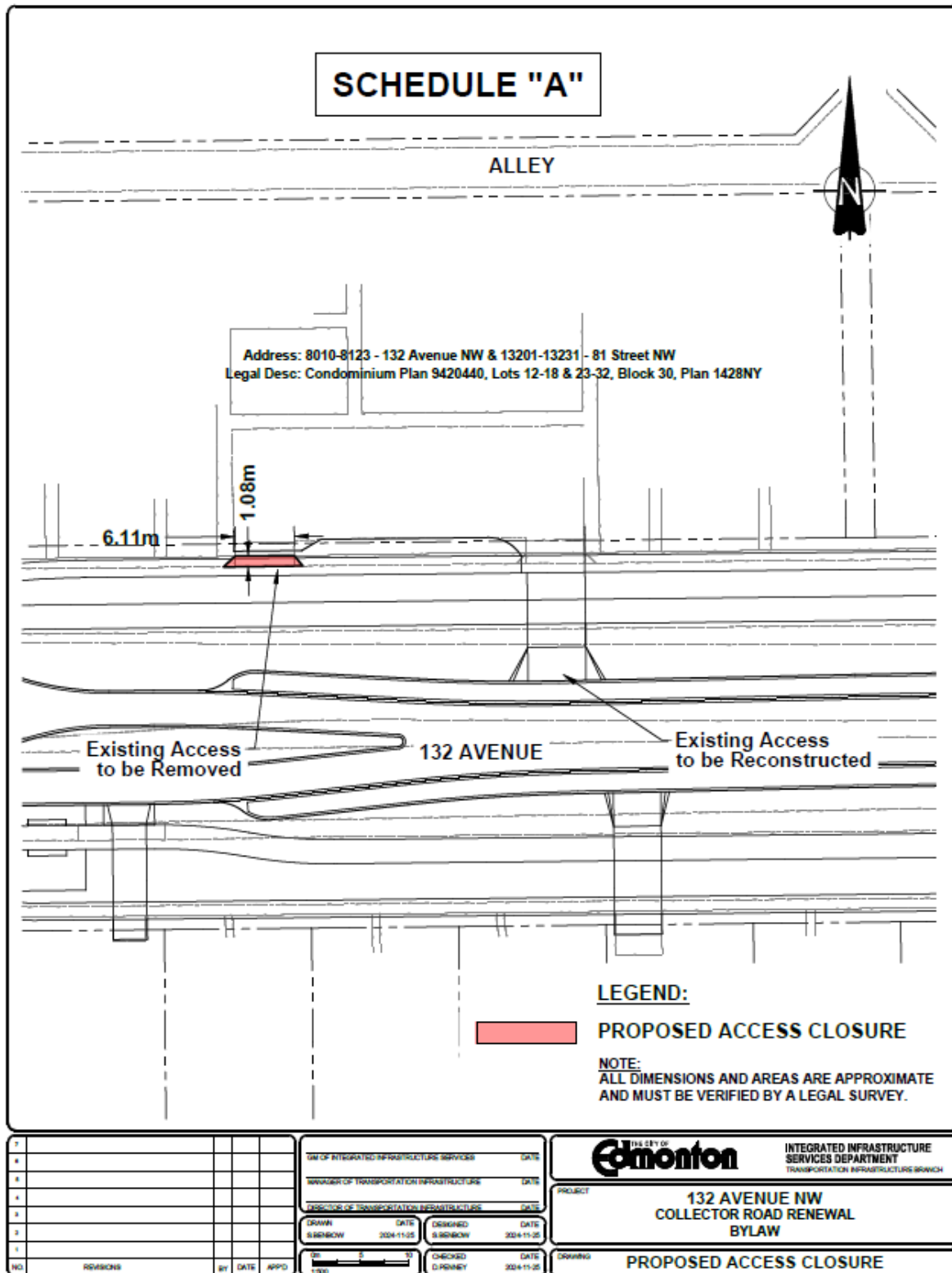
SCHEDULE “A15” TO BYLAW 21110



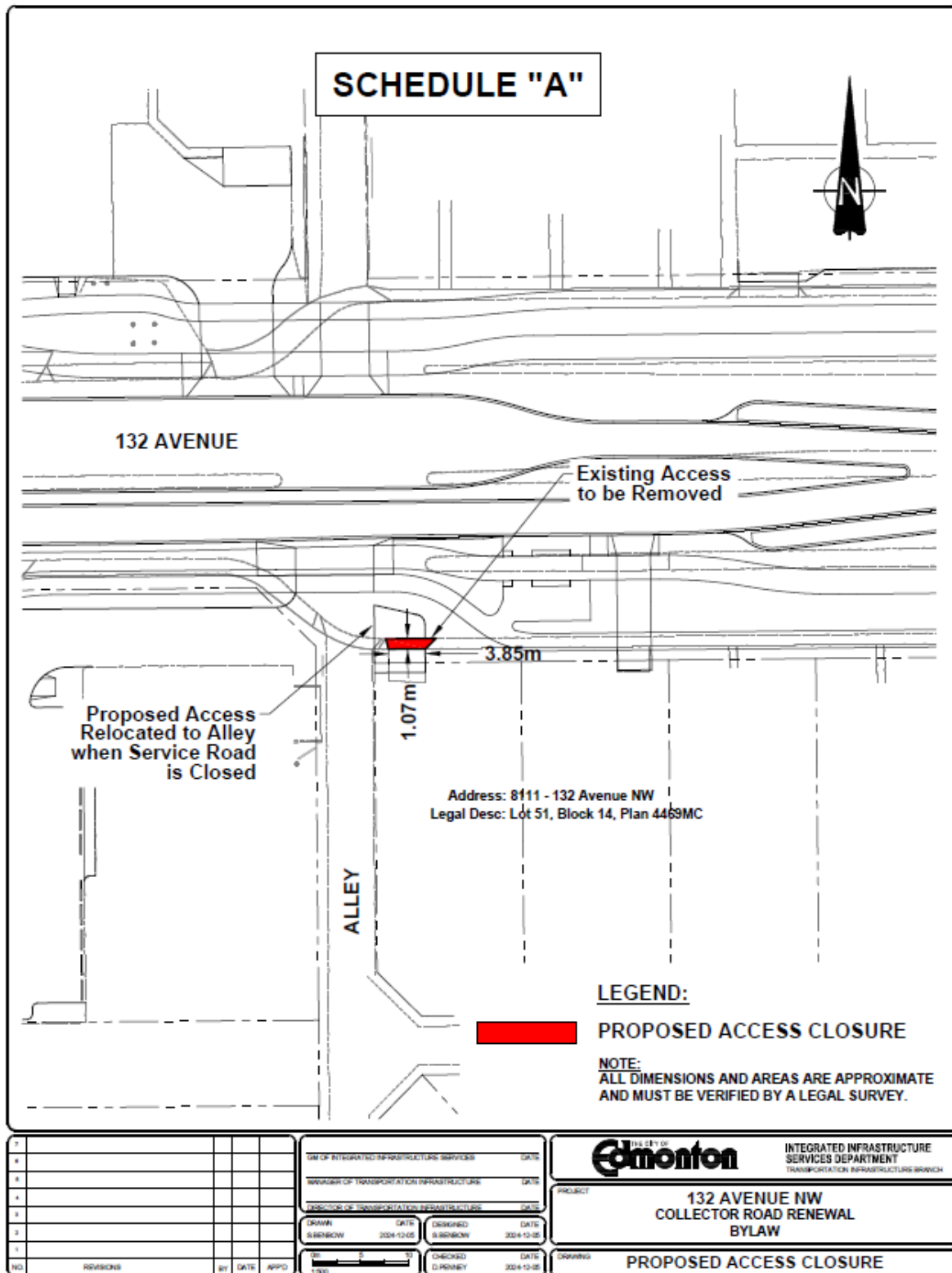
SCHEDULE “A16” TO BYLAW 21110



SCHEDULE “A17” TO BYLAW 21110



SCHEDULE “A18” TO BYLAW 21110



SCHEDULE "A19" TO BYLAW 21110

