

\_\_\_\_\_  
Approved as to Form  
Corporate Services (Law Branch)

\_\_\_\_\_  
Approved as to Content  
General Manager, Transportation  
Services

Bylaw 17308

Closure of vehicular access – 95 Avenue NW between 92 Street NW and Donnell Road NW

WHEREAS the Municipal Council of the City of Edmonton may pass a Bylaw pursuant to Section 28 of the *Highways Development and Protection Act*, S.A. 2004, c. H-8.5 for the purpose of removing any direct physical means of access between a controlled street and land adjacent to the controlled street; and

WHEREAS City Council has considered the proposed closing and has agreed that it is in the public interest to pass this Bylaw;

NOW THEREFORE the Municipal Council of the City of Edmonton, duly assembled, enacts as follows:

1. All means of access to or from a controlled street generally as shown on Schedule "A" is hereby closed.

READ a first time this \_\_\_\_\_ day of \_\_\_\_\_, A.D. 2015;  
READ a second time this \_\_\_\_\_ day of \_\_\_\_\_, A.D. 2015;  
READ a third time this \_\_\_\_\_ day of \_\_\_\_\_, A.D. 2015;  
SIGNED and PASSED this \_\_\_\_\_ day of \_\_\_\_\_, A.D. 2015.

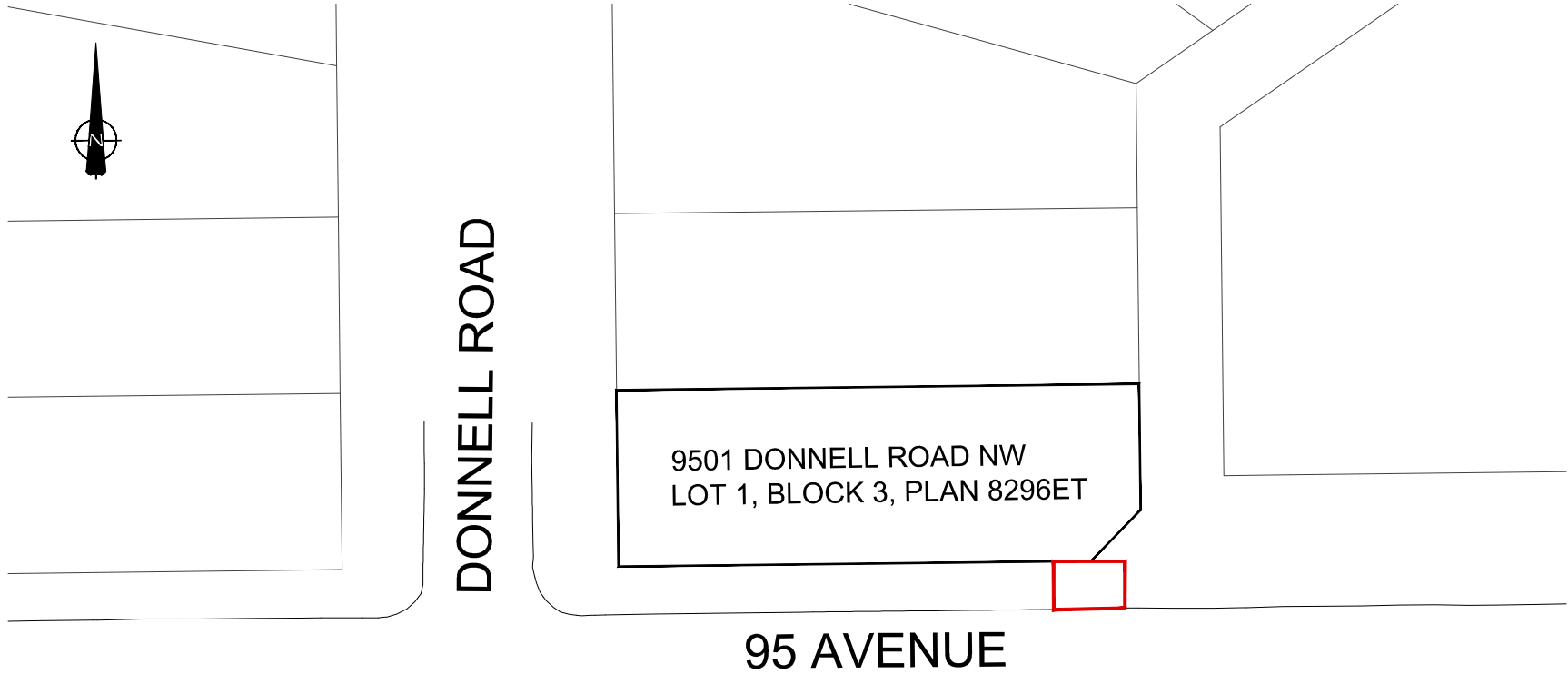
THE CITY OF EDMONTON

\_\_\_\_\_  
MAYOR

\_\_\_\_\_  
CITY CLERK

# SCHEDULE "A"

BYLAW 17308  
Location: 9501 Donnell Road NW



 PROPOSED ACCESS AREA CLOSURE

AREAS SHOWN ARE DERIVED FROM AN UNADJUSTED BASE PLAN