
Approved as to Form
Corporate Services (Law Branch)

Approved as to Content
General Manager, Transportation
Services

Bylaw 17309

Closure of vehicular access – 66 Street NW between 28 Avenue NW and 31 Avenue NW,
adjacent to Lot 4, Block 5, Plan 8220154

WHEREAS the Municipal Council of the City of Edmonton may pass a Bylaw pursuant to Section 28 of the *Highways Development and Protection Act*, S.A. 2004, c. H-8.5 for the purpose of removing any direct physical means of access between a controlled street and land adjacent to the controlled street; and

WHEREAS City Council has considered the proposed closing and has agreed that it is in the public interest to pass this Bylaw;

NOW THEREFORE the Municipal Council of the City of Edmonton, duly assembled, enacts as follows:

1. All means of access to or from a controlled street generally as shown on Schedule "A" is hereby closed.

READ a first time this _____ day of _____, A.D. 2015;

READ a second time this _____ day of _____, A.D. 2015;

READ a third time this _____ day of _____, A.D. 2015;

SIGNED and PASSED this _____ day of _____, A.D. 2015.

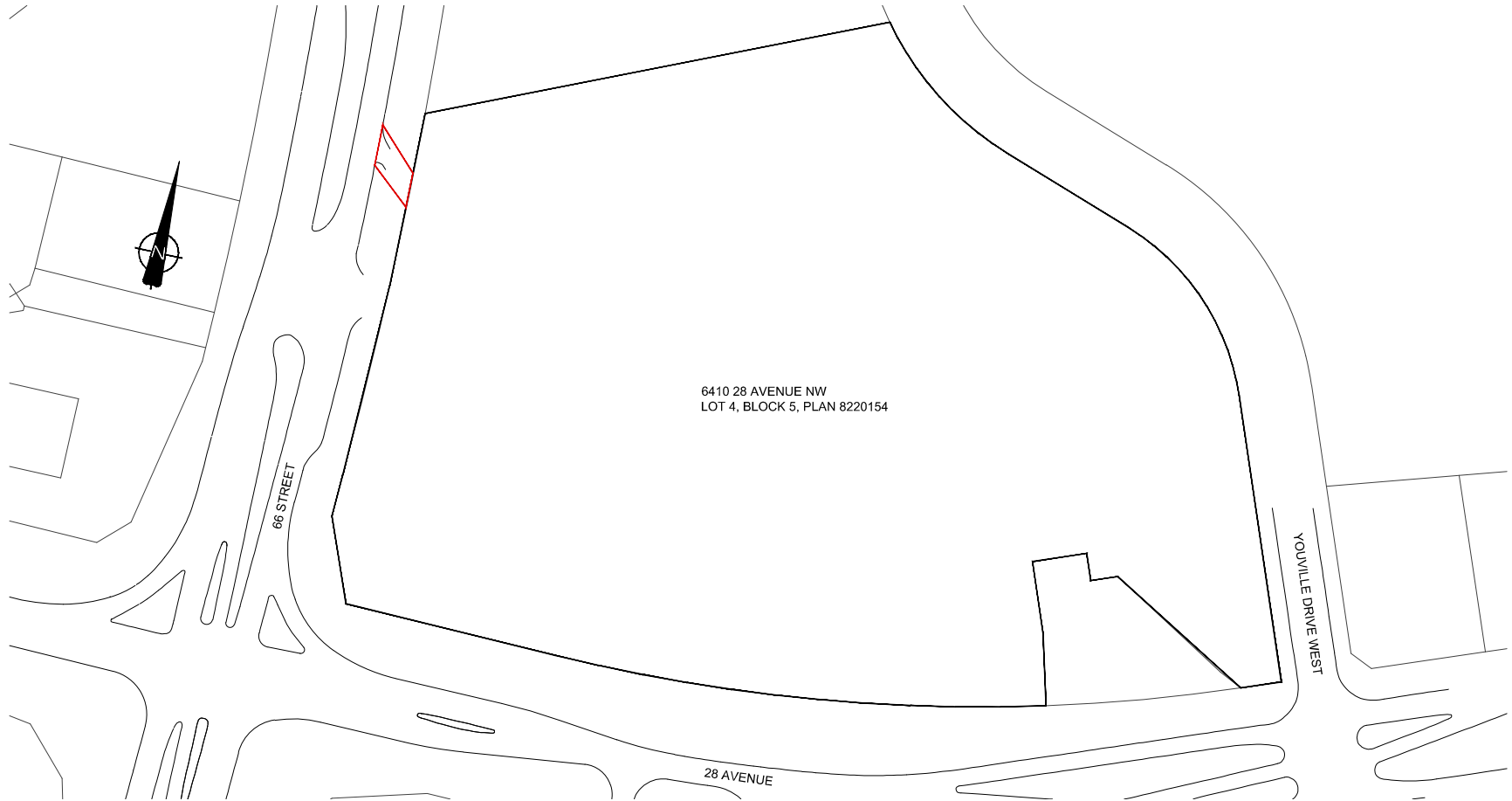
THE CITY OF EDMONTON

MAYOR

CITY CLERK

SCHEDULE "A"

BYLAW 17309
Location: 6410 28 Avenue NW



 **PROPOSED ACCESS AREA CLOSURE**
AREAS SHOWN ARE DERIVED FROM AN UNADJUSTED BASE PLAN