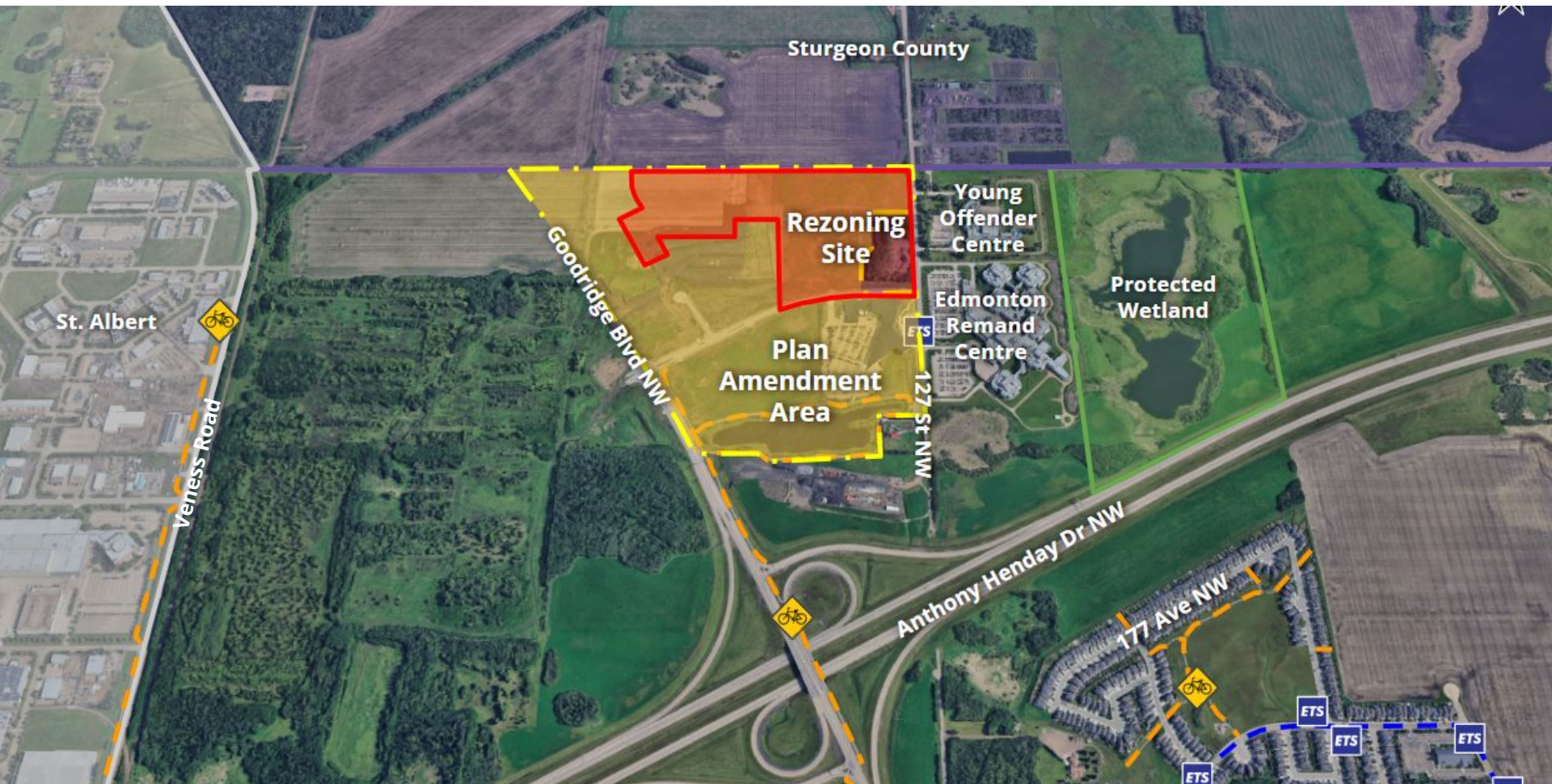


ITEMS 3.20 & 3.21
BYLAWS 21182 & 21183
GOODRIDGE CORNERS

DEVELOPMENT
SERVICES
JUNE 9, 2025

Edmonton



Comments (0)



CITY WEBPAGE
Sept 27, 2024 & Jan 2025



MAILED NOTICE
July 17 & Oct 1, 2024



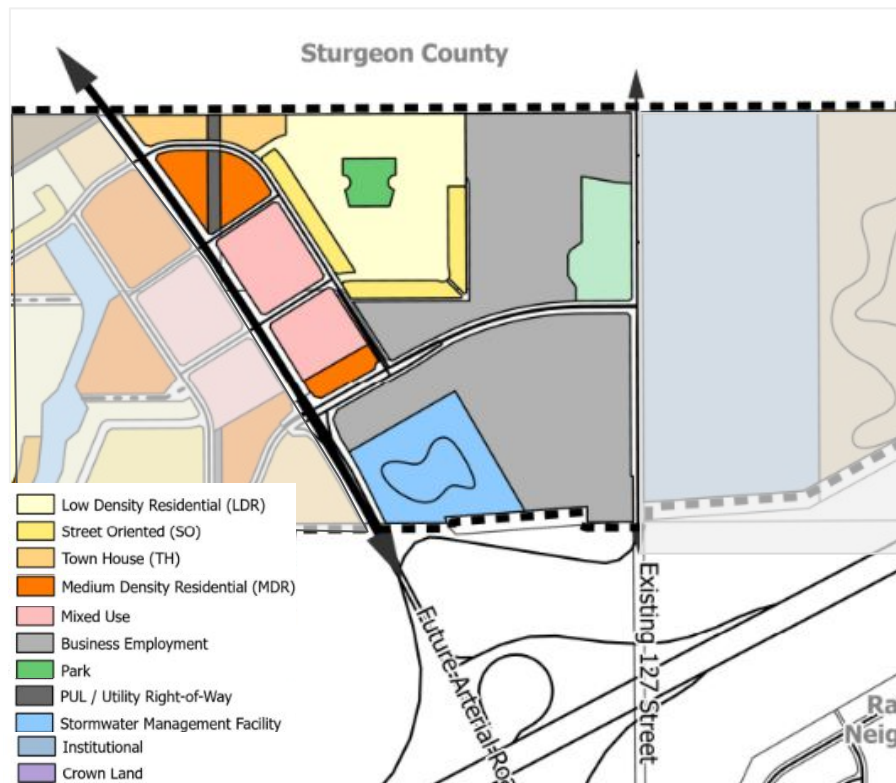
SITE SIGNAGE
April 17, 2025



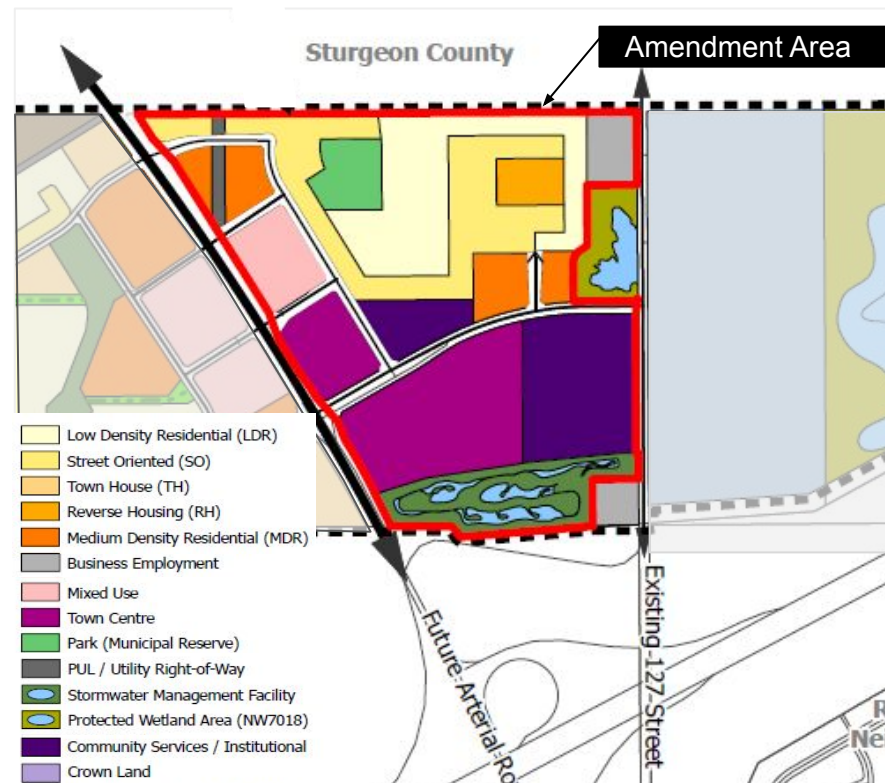
PUBLIC HEARING NOTICE
May 15, 2025



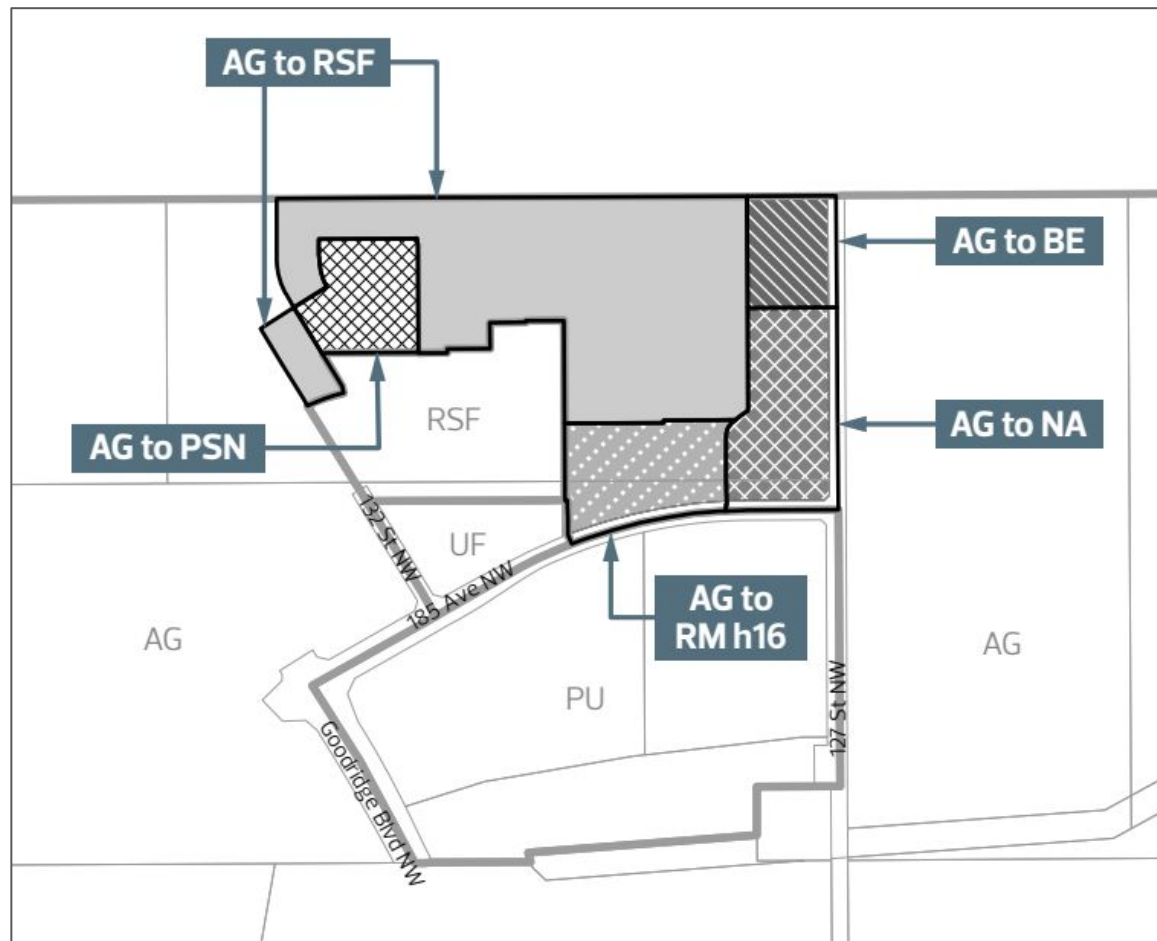
JOURNAL AD
May 23 & May 31, 2025



Current Goodridge Corners NASP



Proposed Goodridge Corners NASP



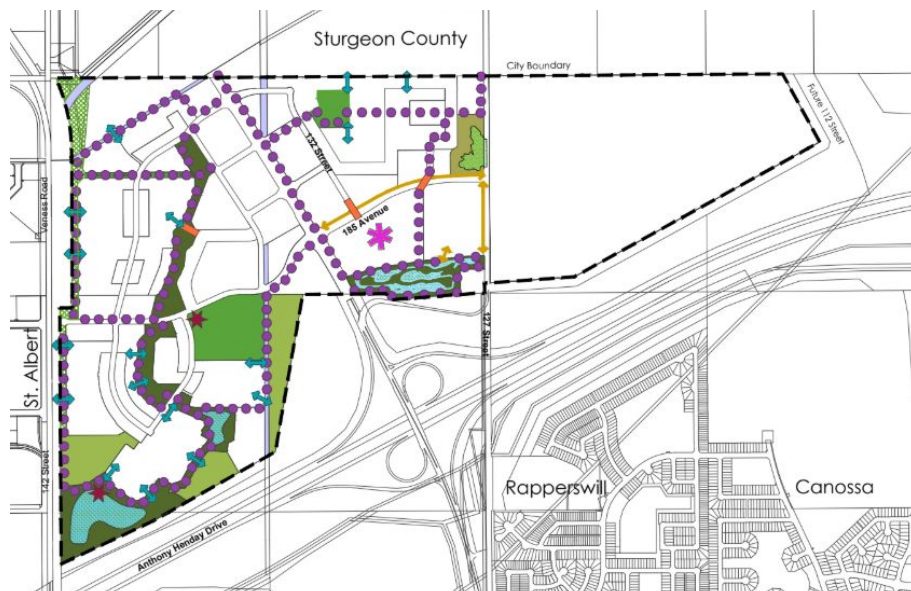
ACTIVE MODES



Legend

- | | | | |
|--|---------------------------------|--|-------------------------------|
| | Urban Village Park | | Major Path (3m S.U.P) |
| | Natural Area | | Potential Pedestrian Crossing |
| | Greenway | | Walkways |
| | Buffer | | Potential Pathway Connections |
| | PUL / Utility Right-of-Way | | Town Centre |
| | Stormwater Management Facility | | Destinations |
| | Protected Wetland Area (NW7018) | | NASP Boundary |

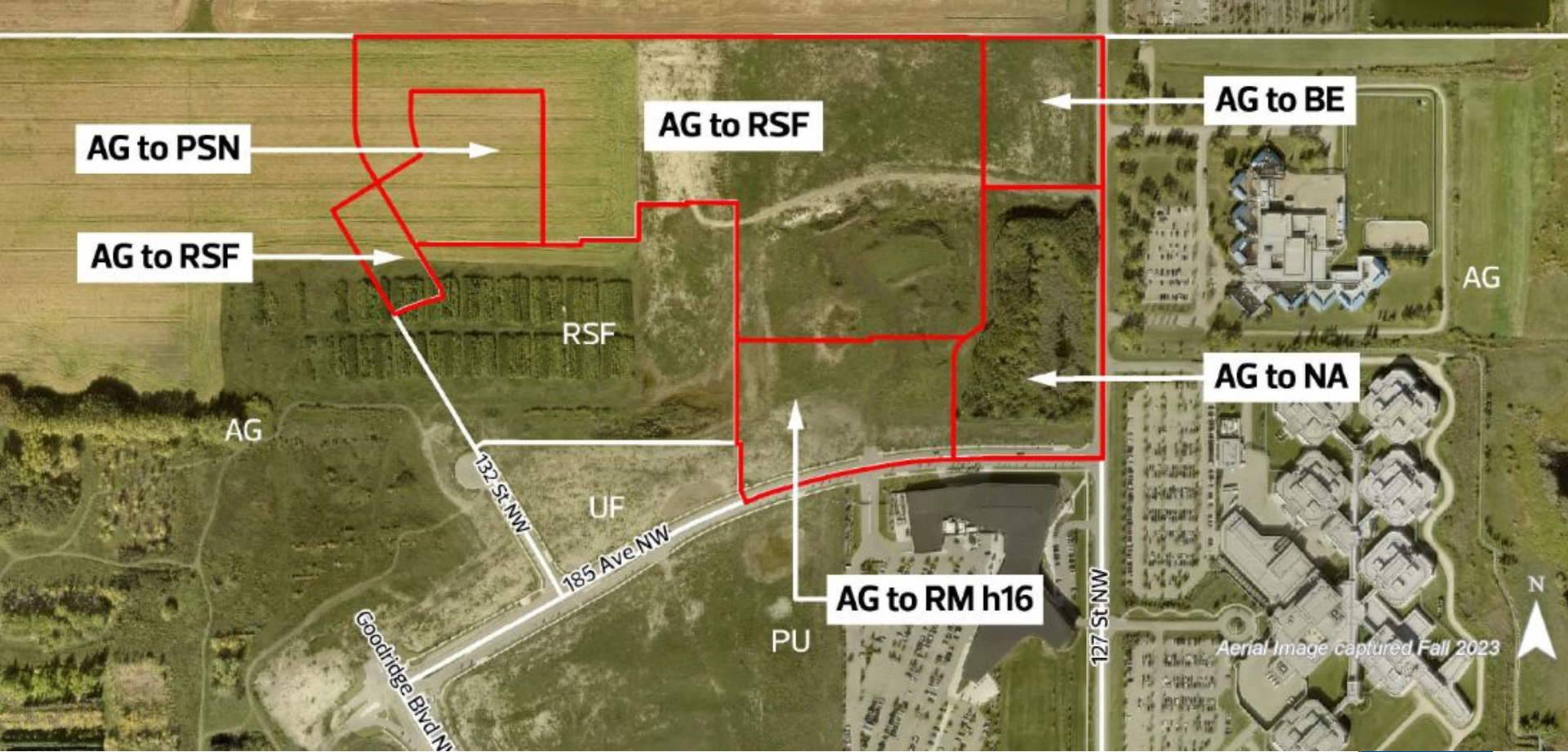
Current Goodridge Corners NASP



LEGEND

- | | | | |
|--|---------------------------------|--|-------------------------------|
| | Municipal Reserve (Park Space) | | Shared Use Paths |
| | Natural Area | | Potential Pedestrian Crossing |
| | Greenway | | Potential Pathway Connections |
| | Buffer | | Existing Pathway Connection |
| | PUL/Utility Right-of-Way | | Town centre |
| | Stormwater Management Facility | | Destinations |
| | Protected Wetland Area (NW7018) | | NASP Boundary |

Proposed Goodridge Corners NASP



ADMINISTRATION'S RECOMMENDATION: **APPROVAL**