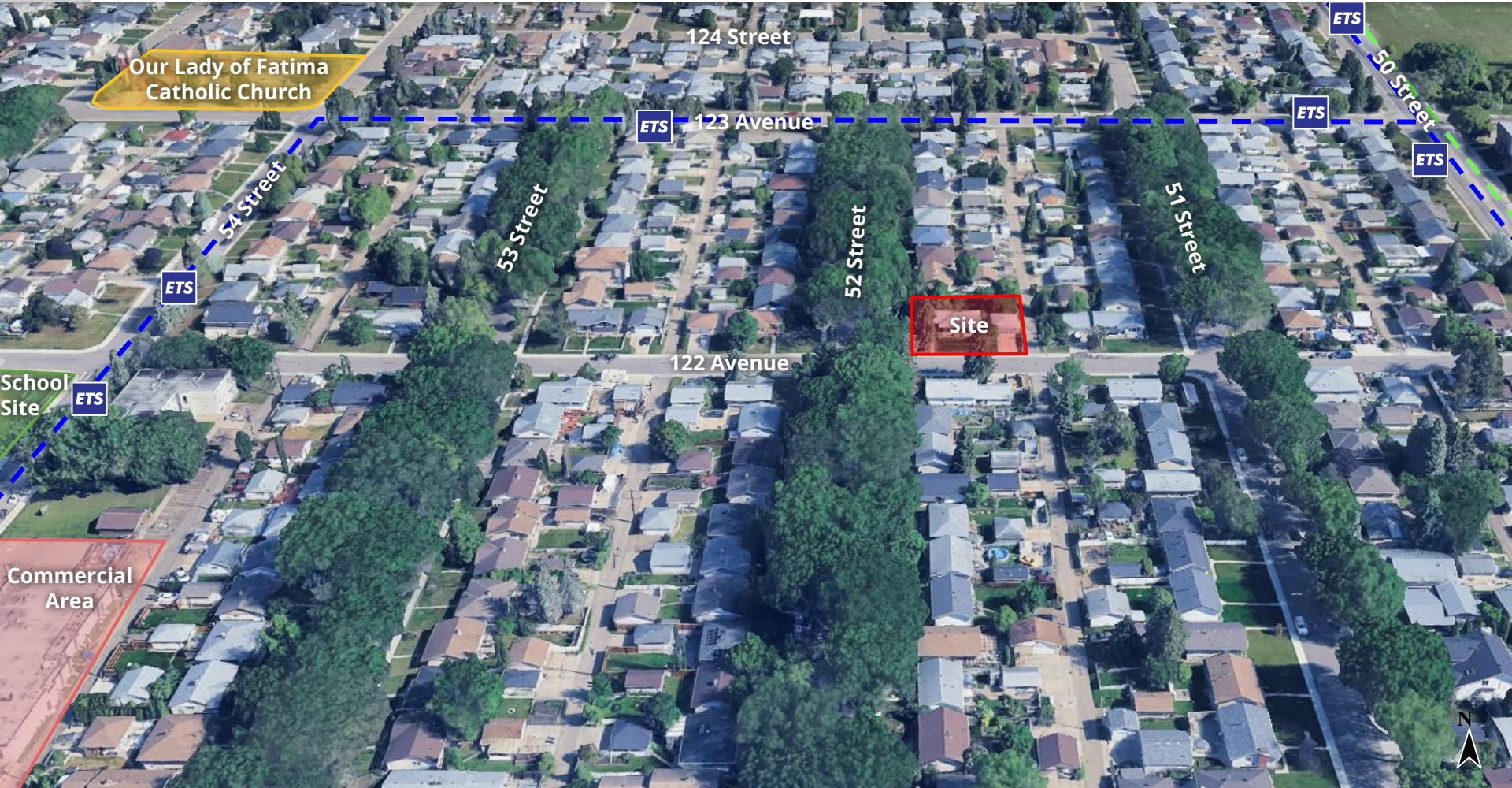


ITEM 3.36
BYLAW 21180
NEWTON

DEVELOPMENT
SERVICES
JUN 9, 2025

Edmonton



Support Low Rise development outside of Nodes and Corridors that **meet at least one** of the following criteria:

- ❌ On corner sites at the edge of the neighbourhood where the block face fronts onto an Arterial Roadway or Collector Roadway,
- ❌ On or adjacent to sites zoned for greater than Small Scale development, or
- ❌ Within 400 metres of Mass Transit Stations and along an Arterial Roadway or Collector Roadway.



North Central District Plan
Map 4: Land use Concept to 1.25 Million

Respondents (17)

Opposition (14)

- Character
- Height/Scale (impact to privacy/sunlight)
- Traffic/Parking
- Property Values
- Loss of trees
- Safety/Crime
- Family displacement
- Speculation
- Potential for Commercial
- Construction Impacts (Noise, Vibration)

Questions (4)



CITY WEBPAGE
Jan 10, 2025



MAILED NOTICE
Feb. 12 and Mar 6,
2025



1:1 COMMUNICATION
Ongoing



CL MEETING
Mar. 4, 2025



SITE SIGNAGE
March 20, 2025



PUBLIC HEARING
NOTICE
May 15, 2025



JOURNAL AD
May 23 and 31,
2025



ADMINISTRATION'S RECOMMENDATION: **NON-SUPPORT**