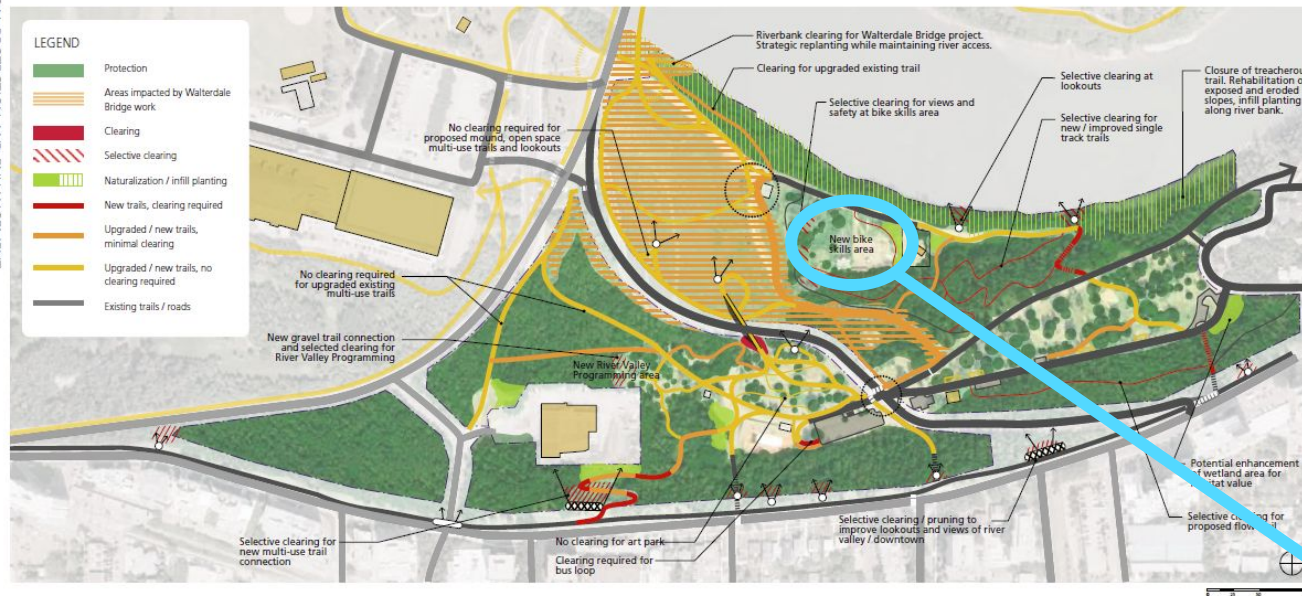


Edmonton Mountain Bike Alliance ("EMBA") submission to City of Edmonton Urban Planning Committee

FIGURE 7.2: ECOLOGICAL PROTECTION AND ENHANCEMENT



Queen Elizabeth Park Integrated Bike Skills Park June 17, 2025

"New bike skills area"

Ecological Protection and Enhancement
Queen Elizabeth Park Master Plan

SPACE PLACE Edmonton





EMBA

- 100% Volunteer run non-profit organization
- The ONLY group authorized for and doing maintenance on the network of natural surface trails
- With a formal written Trail Maintenance Agreement since 2018
- EMBA maintains approximately 25% of the natural surface trails in the river valley for all users.

Since 2016

- >6000 volunteer hours
- 250 trail days
- 250 dead fall removed



Queen Elizabeth Park - Integrated Bike Skills Park



KEY FEATURES OF THE MASTER PLAN:

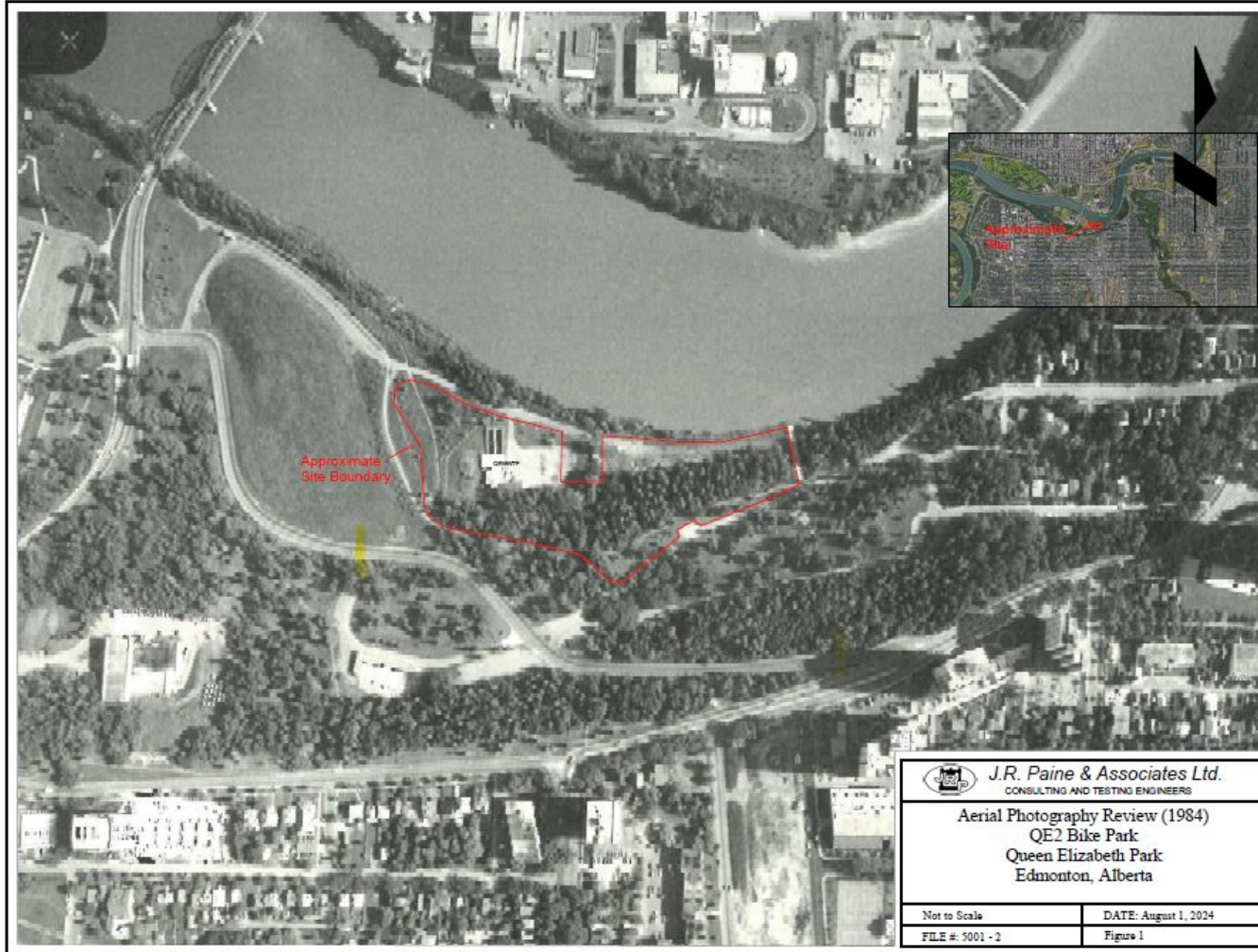
PARK ELEMENTS (page 101)

Bike Skills Park

- A Bike Skills Park will be established in the lower park. It will be the first of its kind in the city, and will provide a unique new activity that enlivens the riverfront.
- The Bike Skills Park will be easily accessed by people using the river valley trail system and will be visible from the multi-use trail, mound, field, and road.
- The Bike Skills Park will provide an opportunity for users to practice safe riding techniques, and to learn about good mountain biking etiquette in the river valley.
- The Bike Skills Park will combine both sanctioned single track forest trails and a full-featured skills park for all ages and abilities.
- The skills area will be located at the site of the old wastewater treatment plant and storage compound. ★
- The bike skills area is to be integrated with the former wastewater treatment plant as a means of re-purposing this defunct industrial use into a lively recreation facility.
- The sanctioned single track trails component will be built in a designated area in the lower park adjacent to the bike skills area. They will be developed using best-practice design, construction and maintenance standards.
- Having single track trails in a designated area is intended to help manage the demand for this type of trail use while limiting degradation to natural areas from unsanctioned use. ★
- A potential “flow trail” may be incorporated into the lower park, situated southeast of the existing washroom building in an area with ad hoc trail development.



Queen Elizabeth Park - Integrated Bike Skills Park



- Having single track trails in a designated area is intended to help manage the demand for this type of trail use while limiting degradation to natural areas from unsanctioned use.
- The skills area will be located at the site of the old wastewater treatment plant and storage compound.



Queen Elizabeth Park - Integrated Bike Skills Park

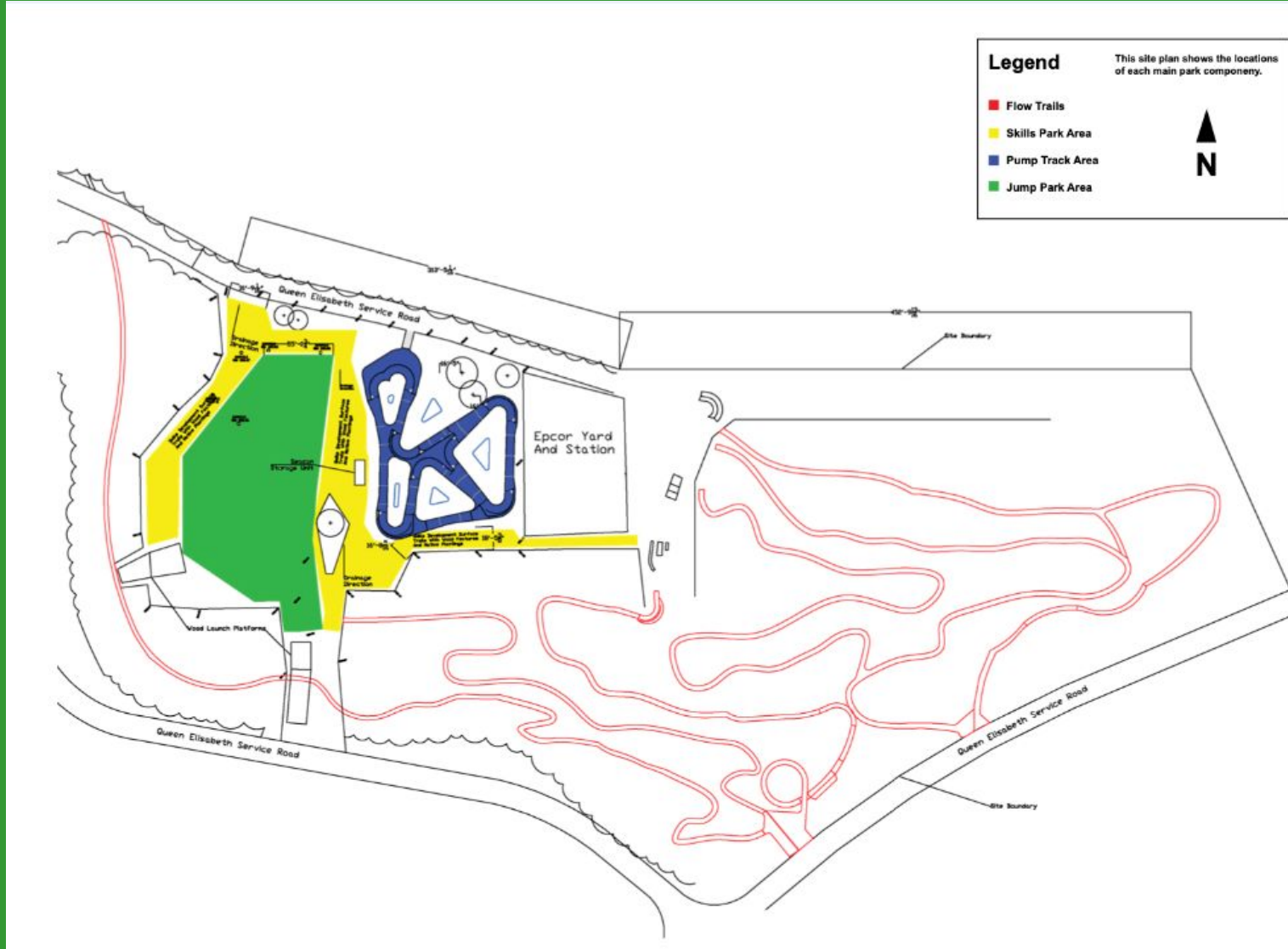


Credit: Common Ground Pty Ltd.

- FREE admission
- 88% support in online survey to build a new mountain bike skills area. (QE Master Plan p.127)
- Will provide the opportunity for learning and advancement of skills for riders of all abilities
- 2.4. Accessibility and Active Transportation -The location of the Bike Park supports equitable and sustainable transportation. ...This also ensures that the park is accessible to a broad demographic, including youth, newcomers, and equity-seeking groups, many of whom may not have private vehicle access to remote trailheads or recreation destinations outside the core. (Fiera Biological Consulting – Site Location Study p. 6)



Queen Elizabeth Park - Integrated Bike Skills Park



\$1,235,000 Budget

FULLY FUNDED

- **\$407,550** grant from the City of Edmonton through the Recreation Partner and Facility Investment Program (RPFIP)
- **\$612,999** grant from the Province of Alberta through a successful Community Facility Enhancement Program (CFEP) Large Grant application
- Balance through donations of equipment and volunteer labour (flow trail construction)



Queen Elizabeth Park - Integrated Bike Skills Park



THANK YOU!

