

## Progression of Design

The figures below show the progression of the design of a transportation and facility infrastructure project between Authorization for Design Expenditure (PDDM Checkpoint 2) and Approval for Capital Budget (PDDM Checkpoint 3).

The initial deliverable, a concept plan (transportation assets) or a functional program (facility assets), is refined and further detailed based on inputs from feasibility studies, technical assessments (e.g., environmental and geotechnical), risk identification and analysis, procurement of a design consultant and engagement with stakeholders and the public.

## Transportation Infrastructure Project

Evolution of the design for the 103 Avenue Streetscape project.



Figure 1: Concept Plan (Checkpoint 2) for 103 Avenue Streetscape (100 to 101 Street)

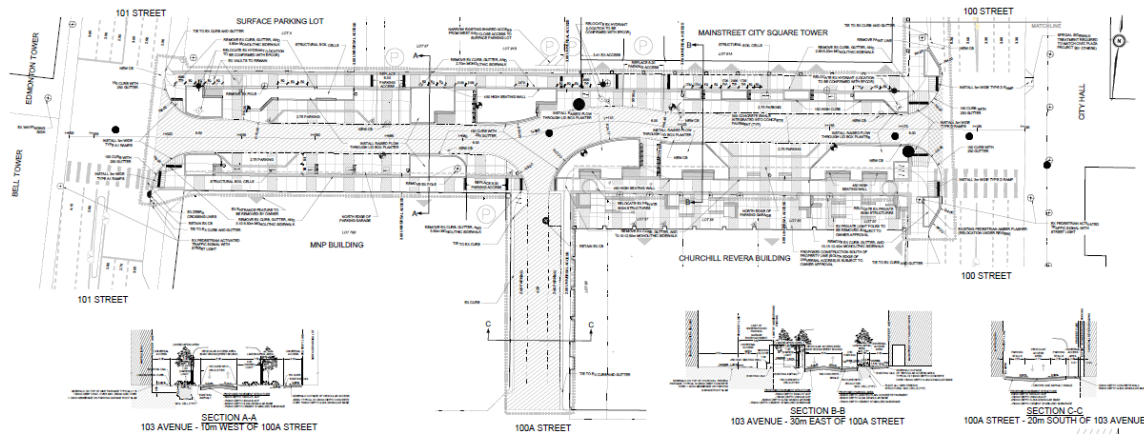


Figure 2: Preliminary Engineering (Checkpoint 3) for 103 Avenue Streetscape (100 to 101 Street)

## Facility Infrastructure Project

Evolution of the design for the Windermere Fire Station project.

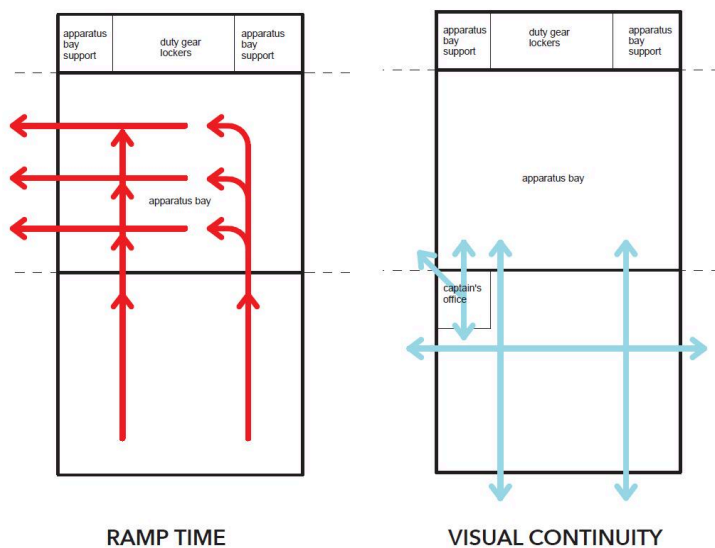


Figure 3: Functional Program (Checkpoint 2) for the Windermere Fire Station



Figure 4: Schematic Design (between Checkpoint 2 and 3) for the Windermere Fire Station

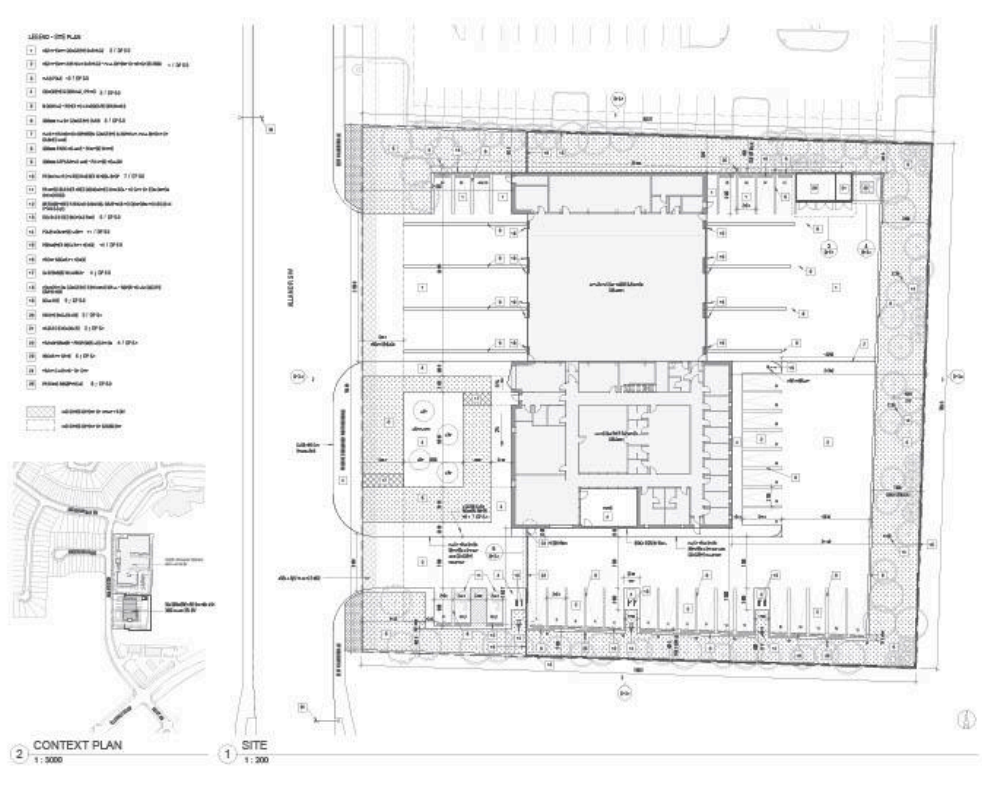


Figure 5: Development Design (Checkpoint 3) for the Windermere Fire Station