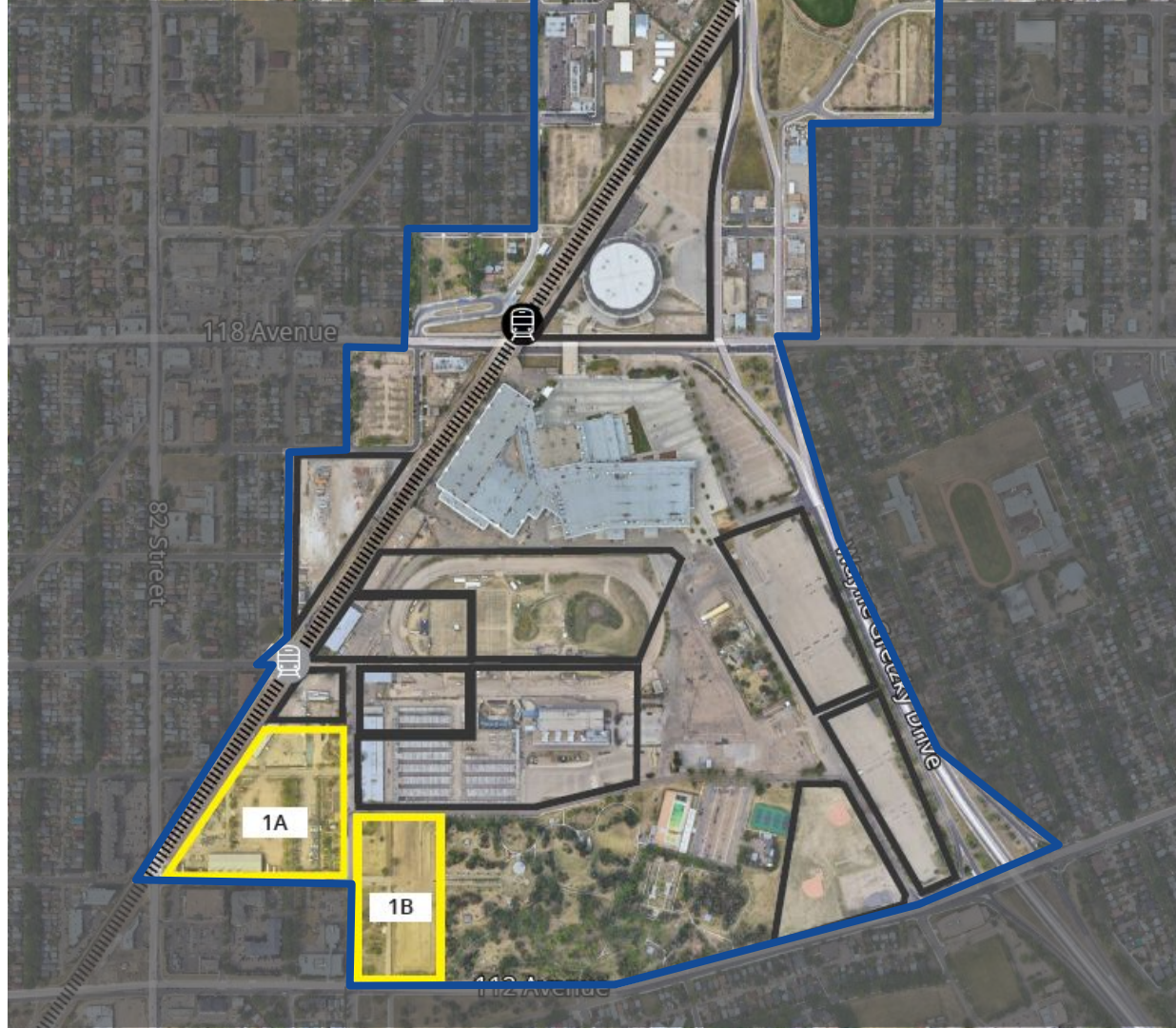


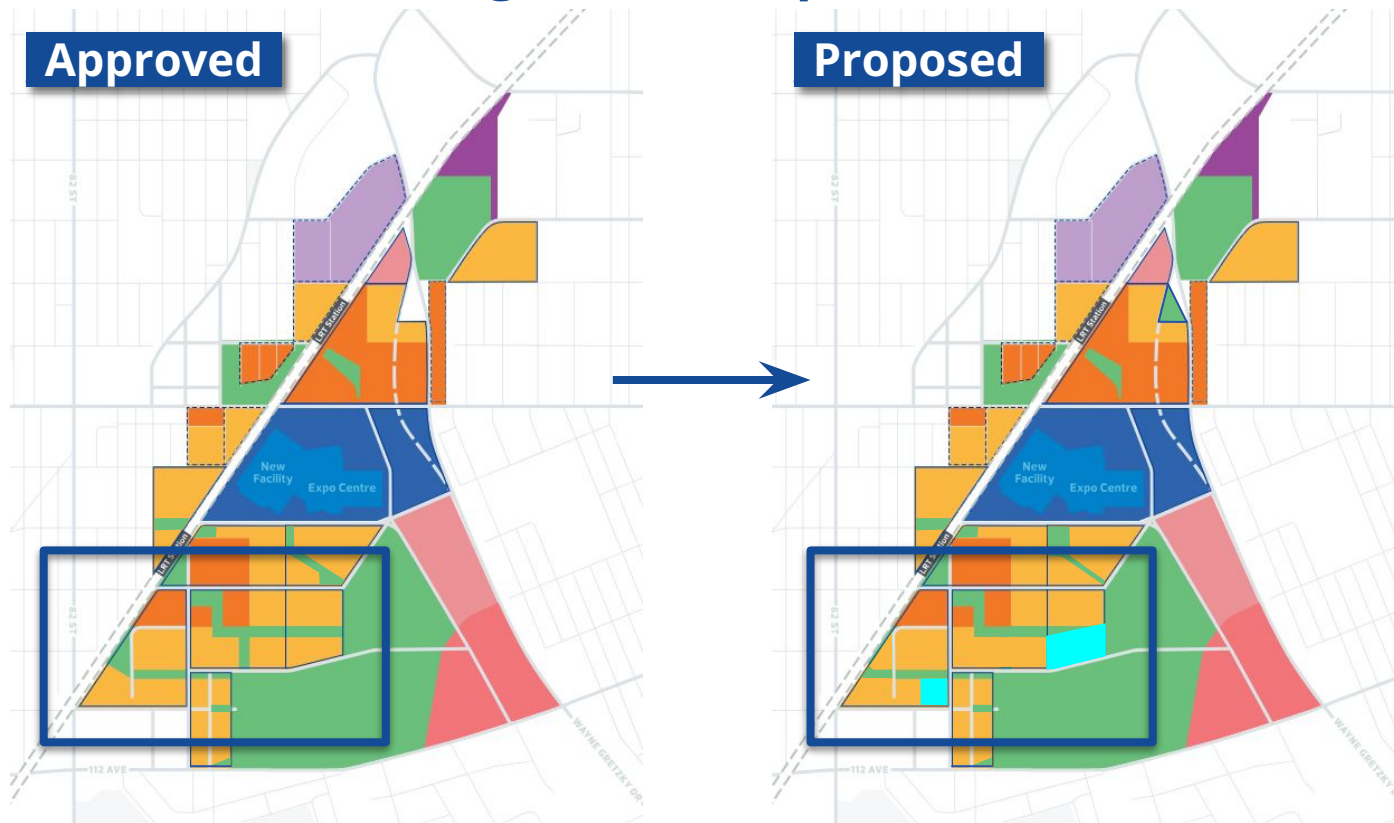
# **Exhibition Lands**

## **Plan Amendments and Rezoning**

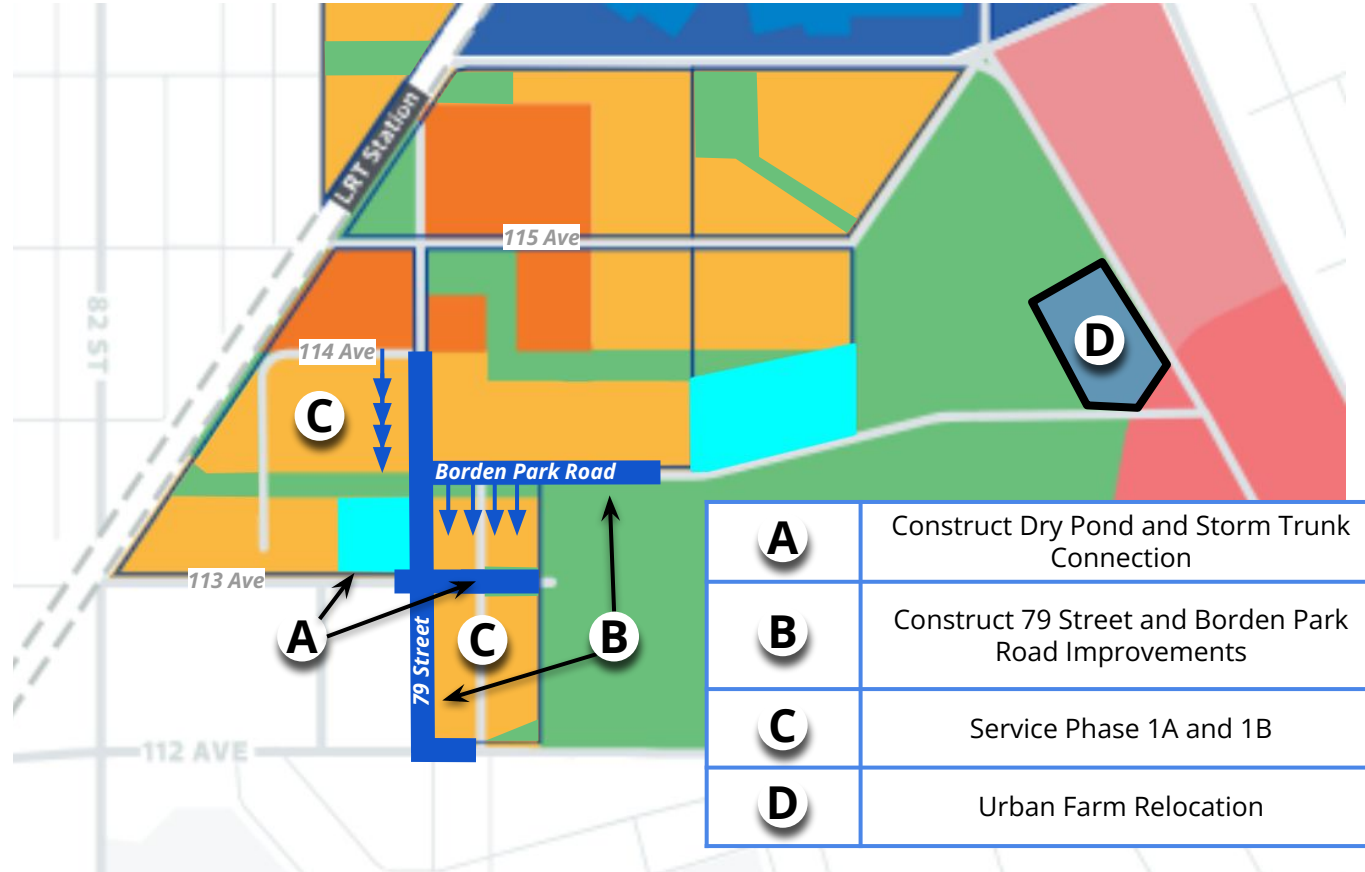
**Neal Osaduik**  
**June 30, 2025**



# Stormwater Management Proposal



## Next Steps



## Urban Farm Relocation



## Alignment with City Plan and Corporate Priorities

	Greener as we Grow	Community of Communities	Inclusive and Compassionate	Catalyze and Converge
Enabling future development	✓	✓	✓	✓
Improving climate resilience	✓	✓		
Maintain housing affordability		✓	✓	
Redevelop and repurpose City owned land	✓			✓
Creating complete communities	✓	✓	✓	
Support urban agriculture	✓	✓		

# Thank you for your time

Neal Osaduik, Director, Land Development  
Real Estate | Financial and Corporate Services

Edmonton