

Charter Bylaw 21232

A Charter Bylaw to amend Charter Bylaw 24001,
being the North Central District Plan

WHEREAS pursuant to the authority granted to it by the Municipal Government Act, as amended by the *City of Edmonton Charter, 2018 Regulation, AR 39/2018*, on October 2, 2024, the Municipal Council of the City of Edmonton passed Charter Bylaw 24001, being the North Central District Plan; and

WHEREAS Council found it desirable from time to time to amend the North Central District Plan; and

WHEREAS Council has amended the North Central District Plan, through the passage of Charter Bylaw 21101; and

WHEREAS an application was received by Administration to amend the North Central District Plan;

NOW THEREFORE after due compliance with the relevant provisions of the Municipal Government Act, RSA 2000, c. M-26, as amended, and as amended by the City of Edmonton Charter, 2018 Regulation, AR 39/2018, the Municipal Council of the City of Edmonton duly assembled enacts as follows:

1. That Charter Bylaw 24001, being the North Central District Plan, is hereby amended as follows:
 - a. Deleting a portion of “Map 1: Heritage and Culture”, excluding the legend, as shown on Schedule “A” and replacing it with the equivalent portion of “Map 1: Heritage and Culture”, excluding the legend, as shown on Schedule “B” attached hereto and forming part of this Charter Bylaw;
 - b. Deleting a portion of “Map 2: Activating Growth to 1.25 Million”, excluding the legend, as shown on Schedule “C” and replacing it with the equivalent portion of

“Map 2: Activating Growth to 1.25 Million”, excluding the legend, as shown on Schedule “D” attached hereto and forming part of this Charter Bylaw;

- c. Deleting a portion of “Map 3: Nodes and Corridors”, excluding the legend, as shown on Schedule “E” and replacing it with the equivalent portion of “Map 3: Nodes and Corridors”, excluding the legend, as shown on Schedule “F” attached hereto and forming part of this Charter Bylaw;
- d. Deleting a portion of “Map 4: Land Use Concept to 1.25 Million”, excluding the legend, as shown on Schedule “G” and replacing it with the equivalent portion of “Map 4: Land Use Concept to 1.25 Million”, excluding the legend, as shown on Schedule “H” attached hereto and forming part of this Charter Bylaw; and
- e. Deleting a portion of “Map 5: Open Space and Natural Areas to 1.25 Million”, excluding the legend, as shown on Schedule “I” and replacing it with the equivalent portion of “Map 5: Open Space and Natural Areas to 1.25 Million”, excluding the legend, as shown on Schedule “J” attached hereto and forming part of this Charter Bylaw.

READ a first time this	day of	, A. D. 2025;
READ a second time this	day of	, A. D. 2025;
READ a third time this	day of	, A. D. 2025;
SIGNED and PASSED this	day of	, A. D. 2025.

THE CITY OF EDMONTON

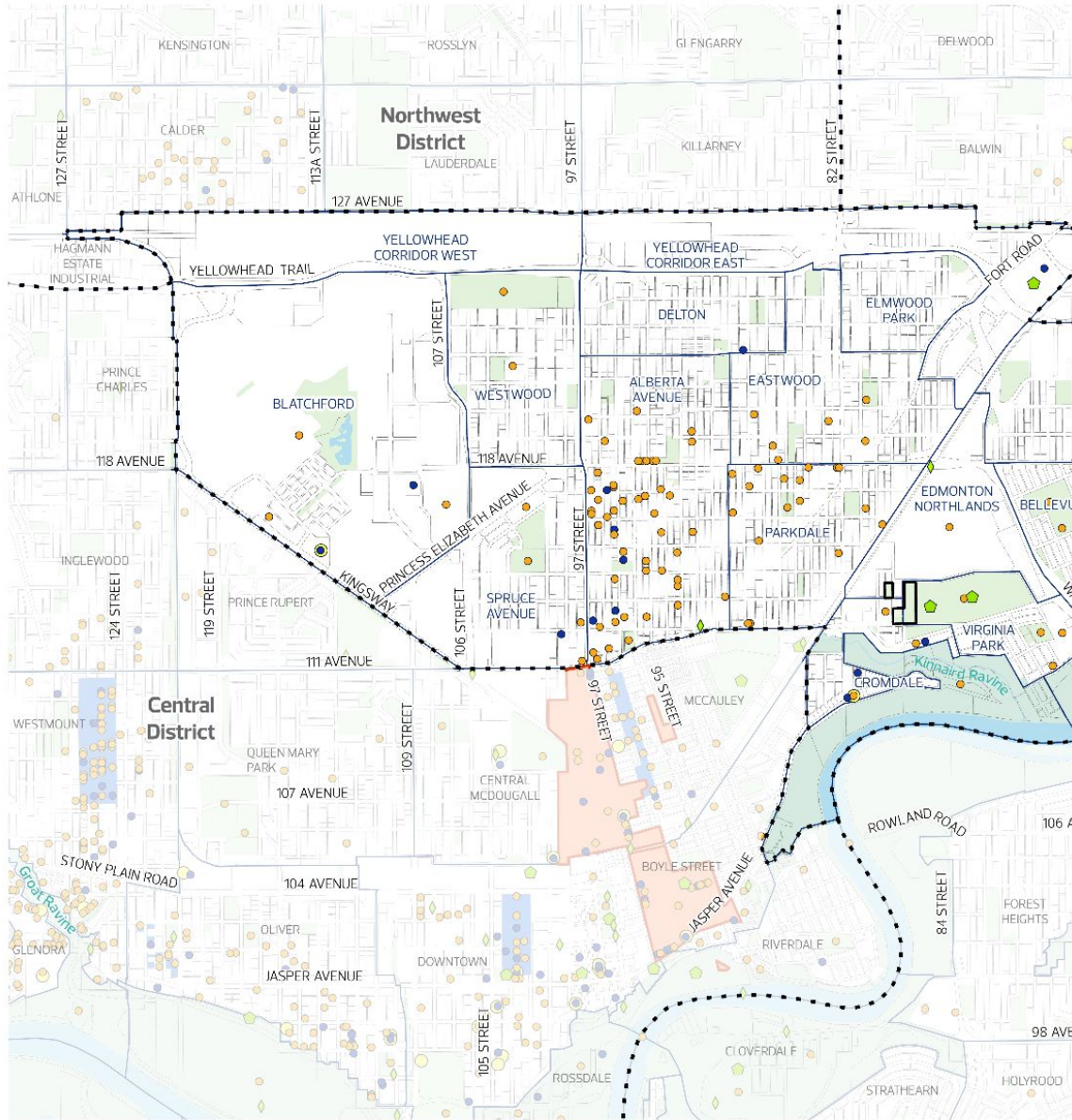
MAYOR

CITY CLERK

Schedule “A - J”

Charter Bylaw 21232

Amendment Area

**General Information**

- Municipal Boundary
- Adjacent Jurisdiction Boundary
- District Plan Boundary
- Neighbourhood Boundary

- Transportation/Utility Corridor
- Waterbody
- North Saskatchewan River Valley and Ravine System
- Open Area

City-Owned Public Art

- Art Work
- Multiple Art Works

Built Heritage Sites

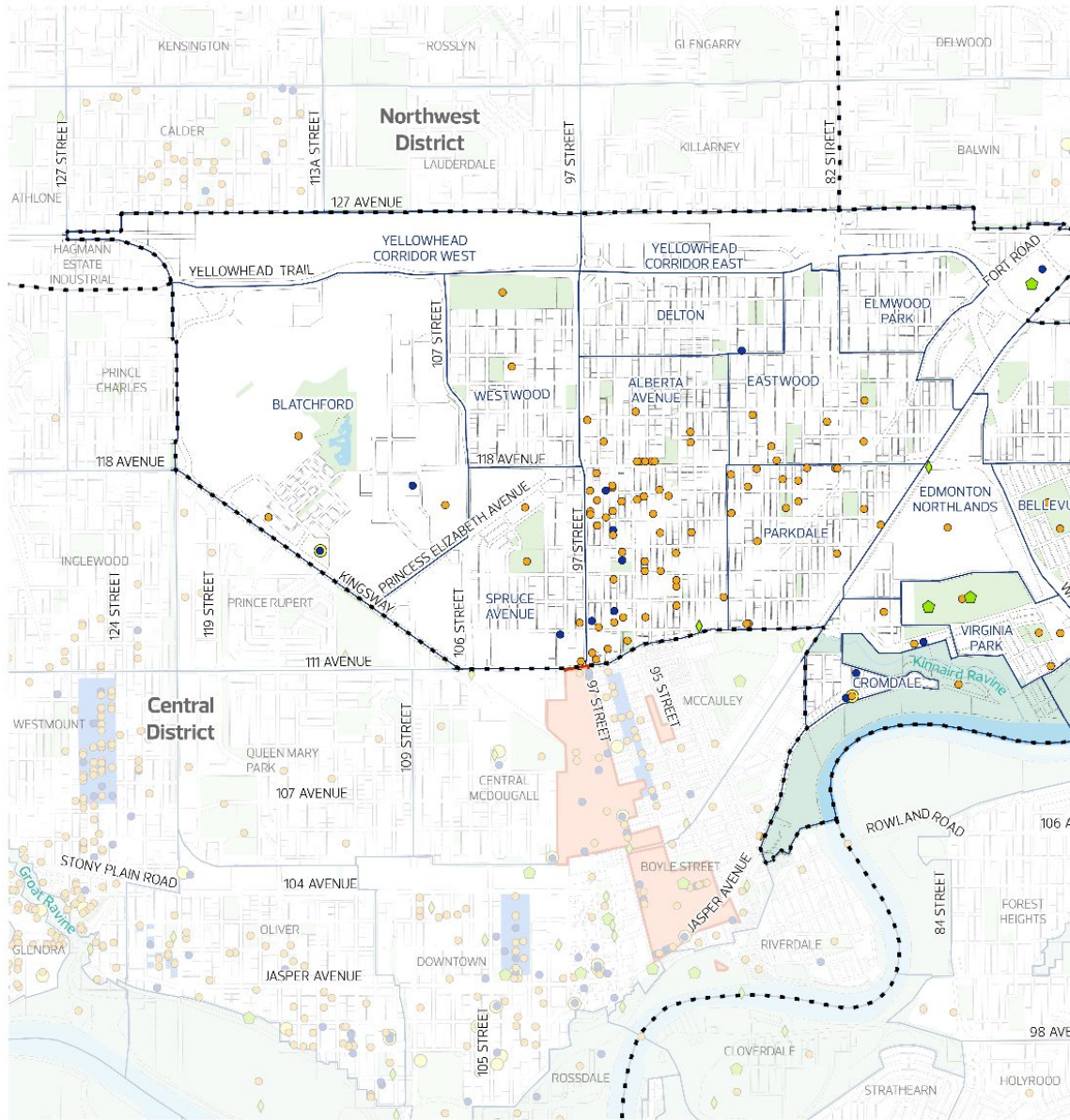
- Inventory of Historic Resources in Edmonton
- Municipal Historic Resource
- Provincial Historic Resource

Heritage Character Areas

- Municipal
- Provincial

Cultural Features

- Known Indigenous Cultural Heritage Feature
- Other Cultural Area

**General Information**

- Municipal Boundary
- Adjacent Jurisdiction Boundary
- District Plan Boundary
- Neighbourhood Boundary

Transportation/Utility Corridor

- Waterbody
- North Saskatchewan River Valley and Ravine System
- Open Area

City-Owned Public Art

- Art Work
- Multiple Art Works

Built Heritage Sites

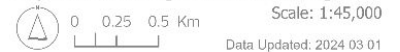
- Inventory of Historic Resources in Edmonton
- Municipal Historic Resource
- Provincial Historic Resource

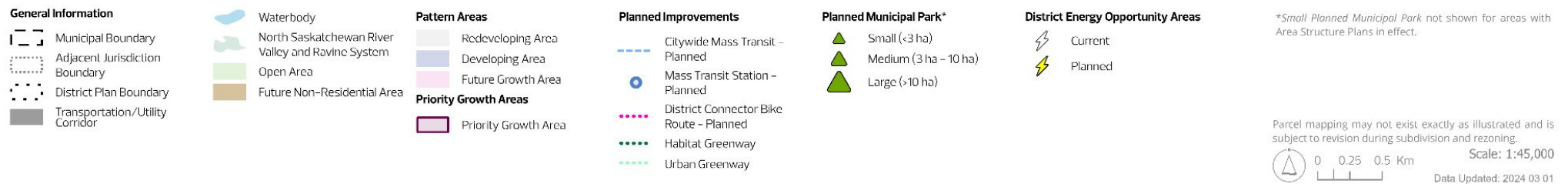
Heritage Character Areas

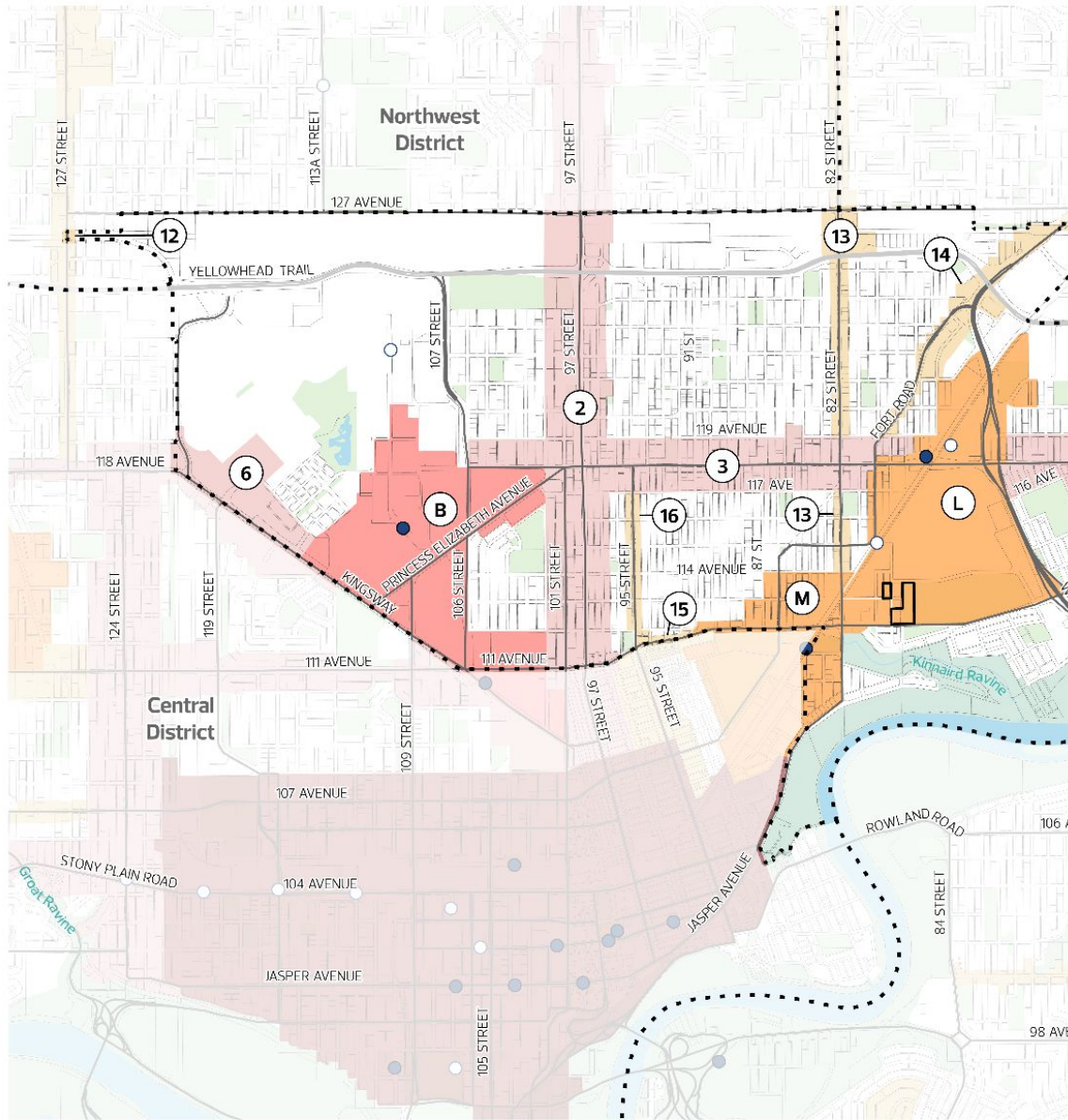
- Municipal
- Provincial

Cultural Features

- Known Indigenous Cultural Heritage Feature
- Other Cultural Area







General Information

- Municipal Boundary
- Adjacent Jurisdiction Boundary
- District Plan Boundary
- Transportation/Utility Corridor
- Arterial Roadway
- Freeway/Expressway/Highway

- Waterbody
- North Saskatchewan River Valley and Ravine System
- Open Area

Transit

- Mass Transit Station - Current
- Mass Transit Station - Planned

Nodes and Corridors

- Centre City
- Major Node
- Blatchford-NAIT-Kingsway

- District Node
- Exhibition
- Stadium

Primary Corridor

- 97 Street
- 118 Avenue
- Kingsway/118 Avenue

Secondary Corridor

- 127 Street
- 82 Street
- Fort Road
- 111 Avenue
- 95 Street

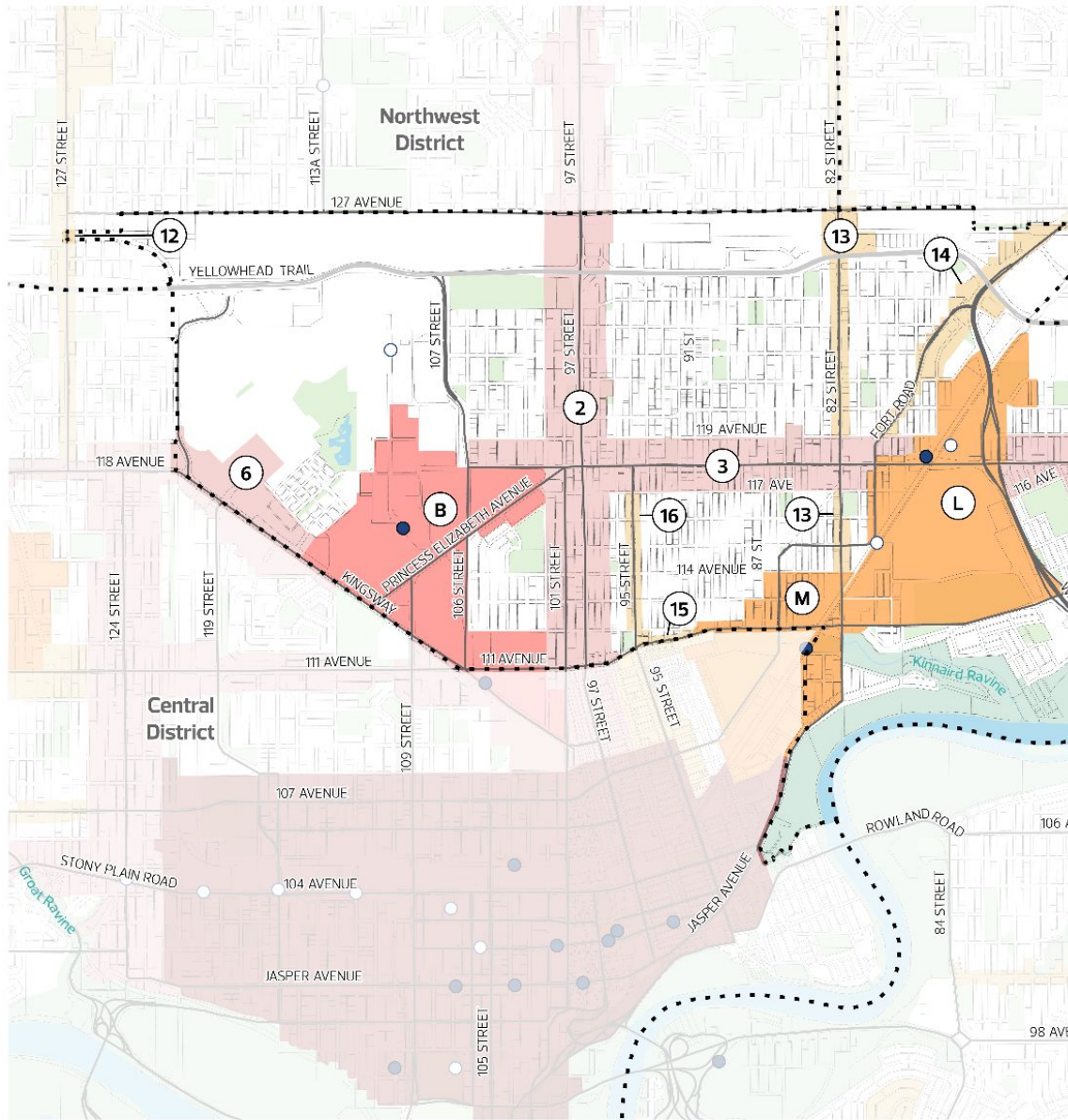
Letter/number labels as per The City Plan

Note that some roadway alignments are conceptual. Refer to additional Plans in Effect, where applicable, for details.

Parcel mapping may not exist exactly as illustrated and is subject to revision during subdivision and rezoning.

Scale: 1:45,000

Data Updated: 2024 03 01



General Information

- Municipal Boundary
- Adjacent Jurisdiction Boundary
- District Plan Boundary
- Transportation/Utility Corridor
- Arterial Roadway
- Freeway/Expressway/Highway

- Waterbody
- North Saskatchewan River Valley and Ravine System
- Open Area

Transit

- Mass Transit Station - Current
- Mass Transit Station - Planned

Nodes and Corridors

- Centre City
- Major Node
- Blatchford-NAIT-Kingsway

- District Node
- Exhibition
- Stadium

Primary Corridor

- 97 Street
- 118 Avenue
- Kingsway/118 Avenue

Secondary Corridor

- 127 Street
- 82 Street
- Fort Road
- 111 Avenue
- 95 Street

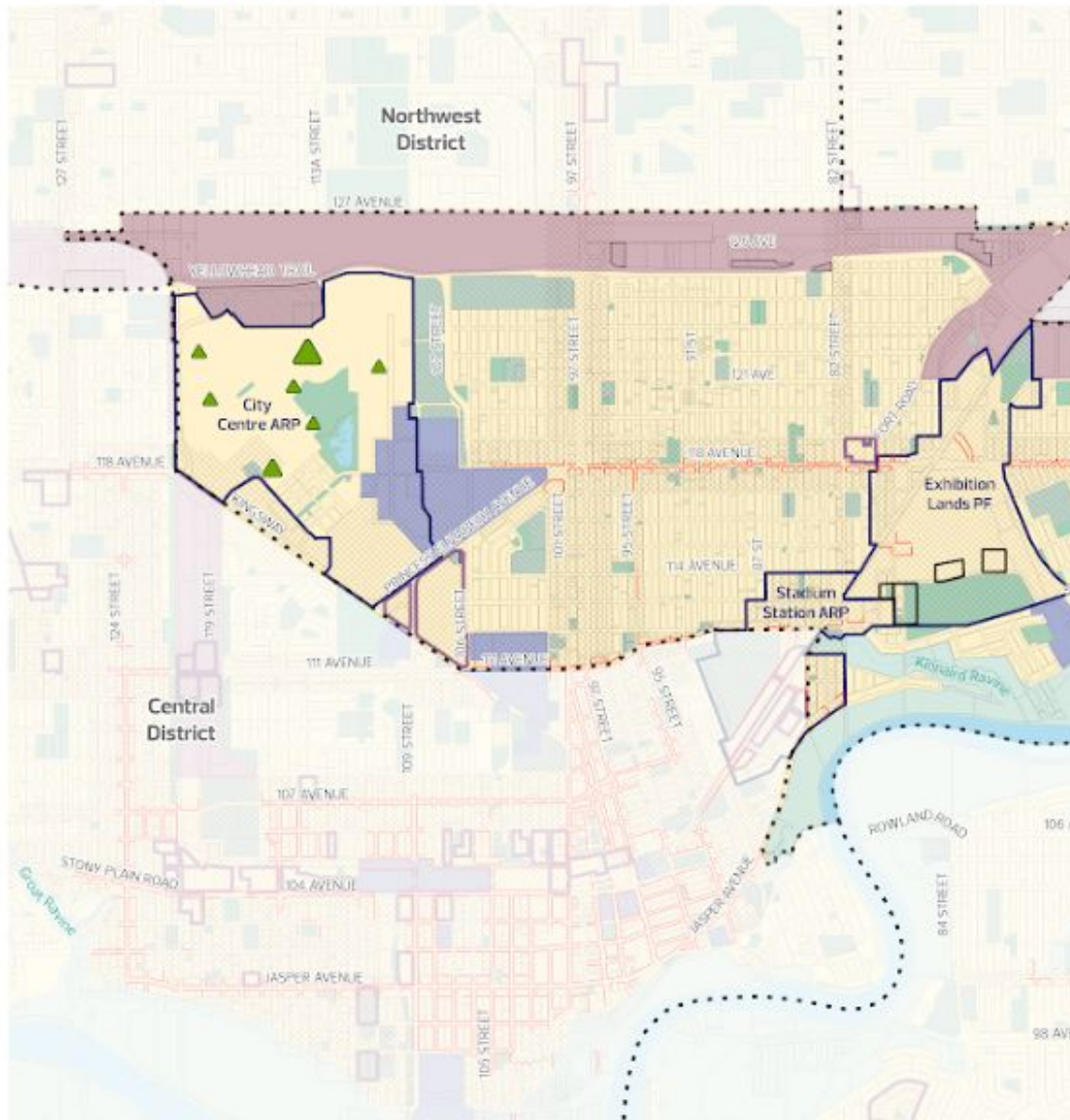
Letter/number labels as per The City Plan

Note that some roadway alignments are conceptual. Refer to additional Plans in Effect, where applicable, for details.

Parcel mapping may not exist exactly as illustrated and is subject to revision during subdivision and rezoning.

Scale: 1:45,000

Data Updated: 2024 03 01

**General Information**

- Municipal Boundary
- Adjacent Jurisdiction Boundary
- District Plan Boundary
- Plan in Effect - Area Structure Plan/Area Redevelopment Plan*
- Plan in Effect - Other*

General Land Use

- Urban Mix
- Commercial/Industrial Employment
- Institutional Employment
- Future Non-Residential Area

- Open Space - Current
- Urban Service
- Agriculture
- Waterbody
- North Saskatchewan River Valley and Ravine System

Planned Municipal Park**

- Small (< 3 ha)
- Medium (3 ha - 10 ha)
- Large (> 10 ha)

Development Areas

- Node or Corridor Area
- Non-Residential Intensification Area

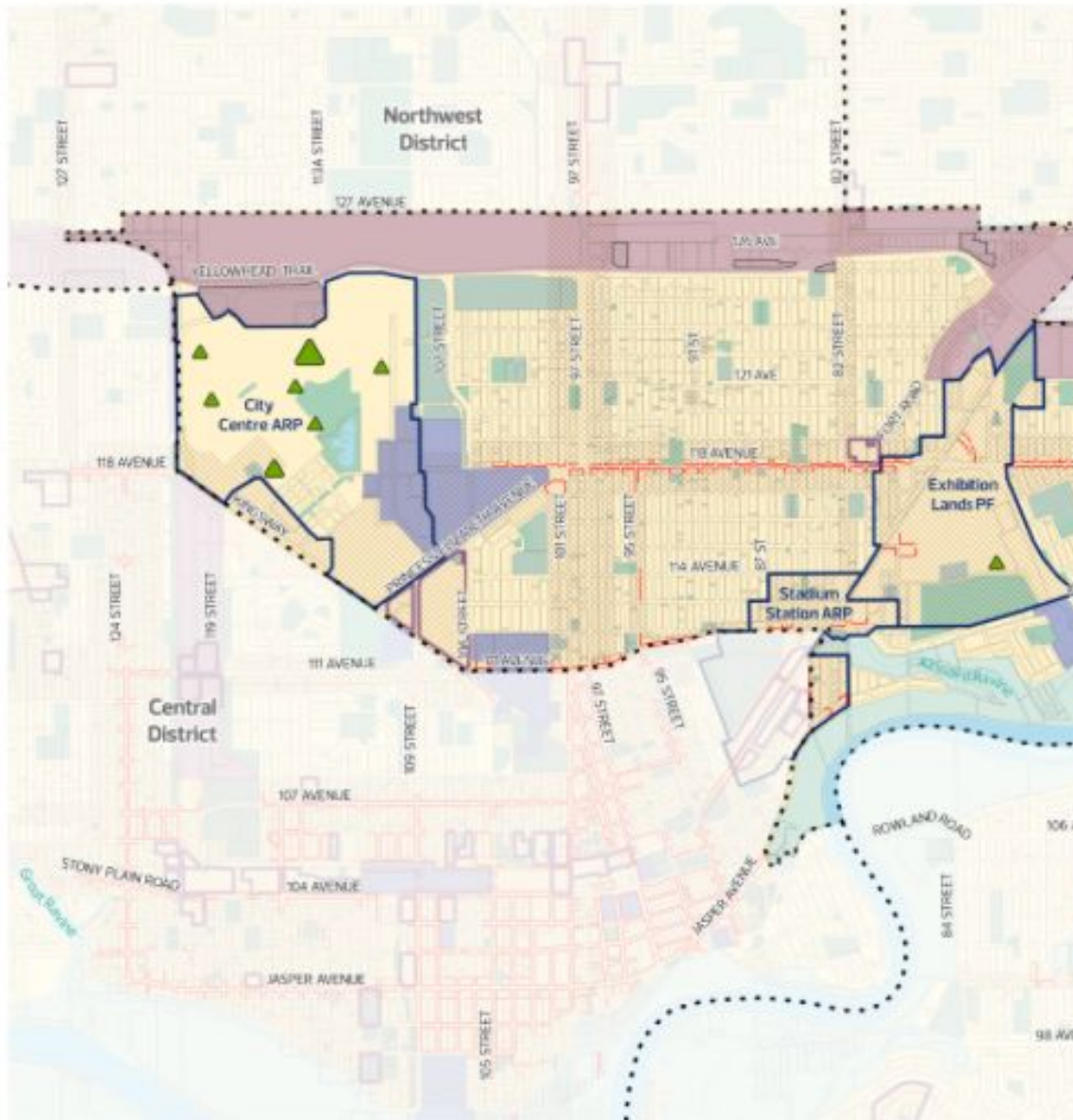
Design Influences

- Large Site
- Commercial Frontage

*Plan in Effect boundaries on this map are conceptual. Consult the Plan in Effect for details.
 **Small Planned Municipal Park not shown for areas with Area Structure Plans in effect.

Parcel mapping may not exist exactly as illustrated and is subject to revision during subdivision and rezoning.

 Scale: 1:45,000
 Date Updated: 2023-12-31



General Information

- Municipal Boundary
- Adjacent Jurisdiction Boundary
- District Plan Boundary
- Plan in Effect - Area Structure Plan/Area Redevelopment Plan*
- Plan in Effect - Other*

General Land Use

- Urban Mix
- Commercial/Industrial Employment
- Institutional Employment
- Future Non-Residential Area

Open Space - Current

- Urban Service
- Agriculture
- Waterbody
- North Saskatchewan River Valley and Ravine System

Planned Municipal Park**

- Small (<3 ha)
- Medium (3 ha - 10 ha)
- Large (>10 ha)

Development Areas

- Node or Corridor Area
- Non-Residential Intensification Area

Design Influences

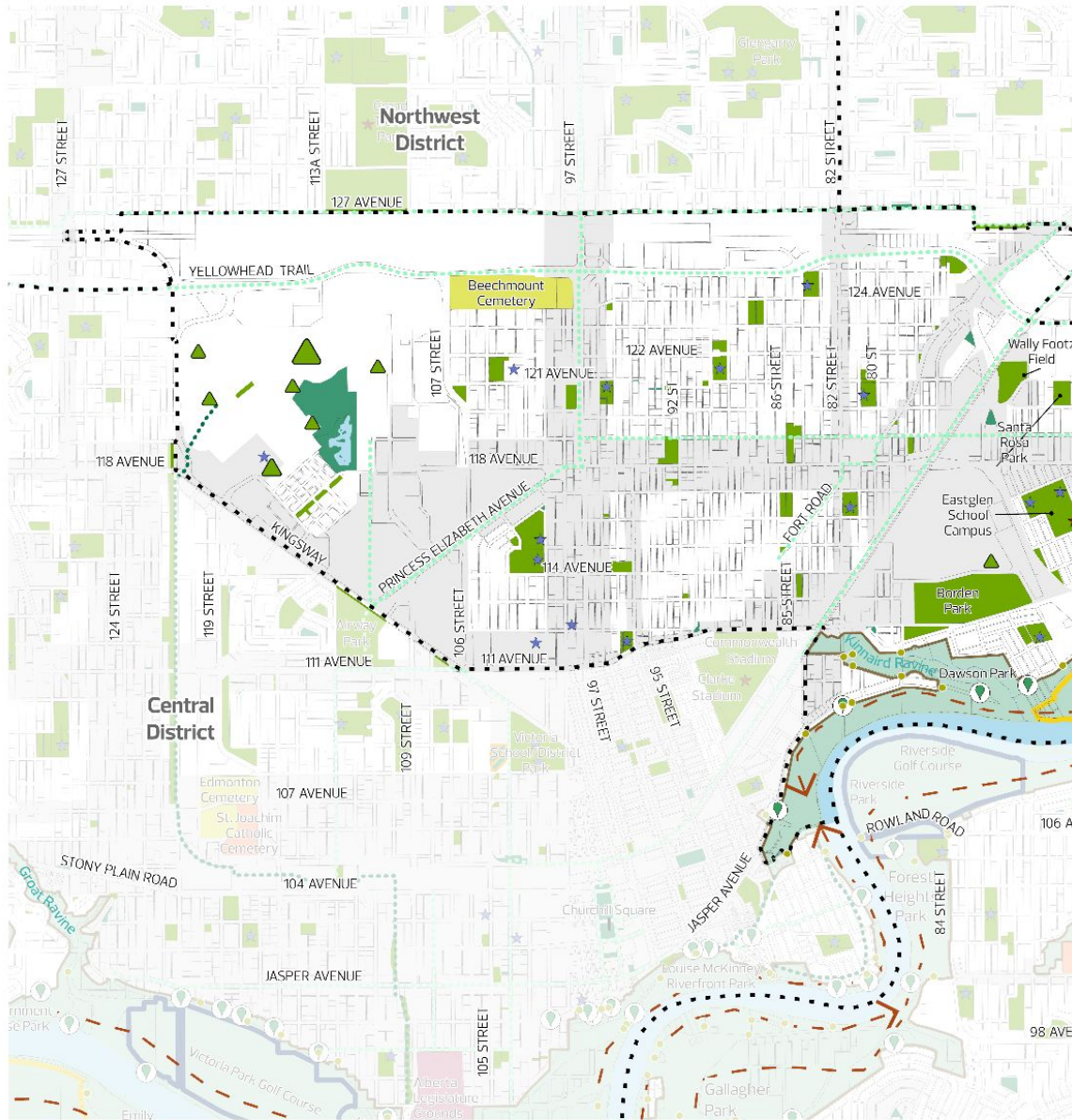
- Large Site
- Commercial Frontage

*Plan in Effect boundaries on this map are conceptual. Consult the Plan in Effect for details.
 **Small Planned Municipal Park not shown for areas with Area Structure Plans in effect.

Parcel mapping may not exist exactly as illustrated and is subject to revision during subdivision and rezoning.
 Scale: 1:45,000
 Data Updated: 2023 12 11



Scale: 1:45,000

**General Information**

- Municipal Boundary
- Adjacent Jurisdiction Boundary
- District Plan Boundary
- Node or Corridor Area
- Transportation/Utility Corridor*

Open Space Connectors and Features

- River Valley Viewpoint – Current
- River Valley Viewpoint – Planned
- River Valley Trail Access

- North Saskatchewan River Valley and Ravine System
- Habitat Greenway
- Urban Greenway
- Major Ecological Connection

Municipal Open Space

- Park – Current**
- Open Space – Supplementary**
- Municipal Golf Course
- Municipal Cemetery

Planned Municipal Park***

- Small (<3 ha)
- Medium (3 ha – 10 ha)
- Large (>10 ha)

Community Assets

- Recreation Centre
- School

Non-Municipal Open Space

- Open Space – Other
- Provincial Park/Protected Area
- Private Golf Course
- Private Cemetery

Other Open Spaces

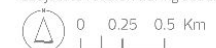
- Special Purpose Facility

*Transportation/Utility Corridor is not comprehensive and for illustrative purposes only.

**Park – Current and Open Space – Supplementary may include Urban Service uses.

***Planned Municipal Park locations are conceptual. Refer to the Plan in Effect or other applicable plans for details. Small Planned Municipal Park not shown for areas with Area Structure Plans in effect.

Parcel mapping may not exist exactly as illustrated and is subject to revision during subdivision and rezoning.



Scale: 1:45,000

Data Updated: 2024 03 01