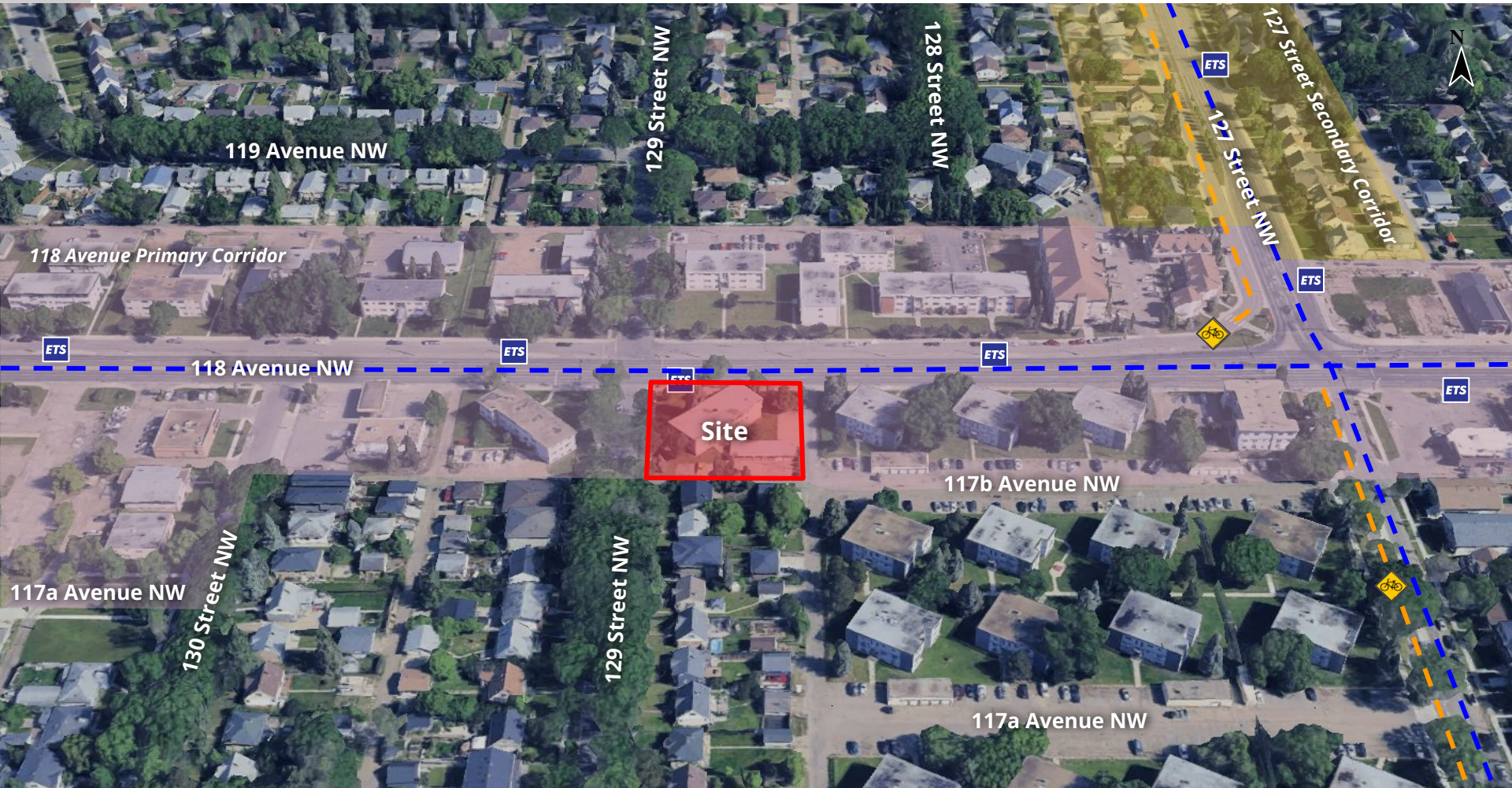




DEVELOPMENT  
SERVICES  
JUNE 30, 2025





# 3 PROPOSED ZONING



REGULATION	RM h16 Current Zoning	RM h23 Proposed Zoning
Typical Uses	Multi-Unit Housing	Multi-Unit Housing
Height	16.0 m	23.0 m
Density	Min: 45 du/ha	Min: 75 du/ha
Setbacks North (118 Ave) South (Alley) East (Alley) West (129 St)	3.0 m 3.0 m 3.0 m 3.0 m	3.0 m 3.0 m 3.0 m 3.0 m
Commercial Uses Permitted	Limited at Grade	Limited at Grade



Respondents (3)

Support (2)

Mixed/Questions (1)

- Parking availability
- Congestion



CITY WEBPAGE  
April 2, 2025



MAILED NOTICE  
April 2, 2025



1:1 COMMUNICATION  
Ongoing



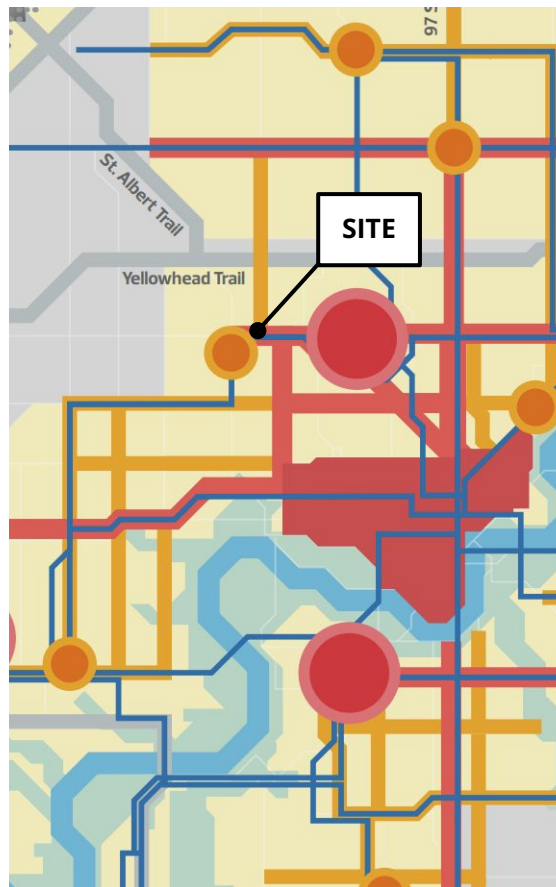
SITE SIGNAGE  
May 21, 2025



PUBLIC HEARING  
NOTICE  
June 5, 2025



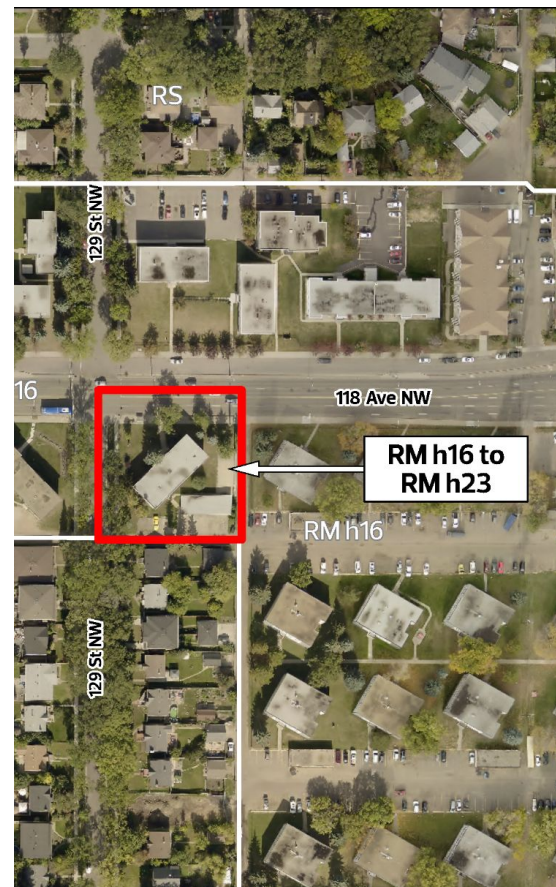
JOURNAL AD  
June 13, 2025 &  
June 21, 2025



CITY PLAN



CENTRAL DISTRICT PLAN



SITE VIEW



Edmonton