

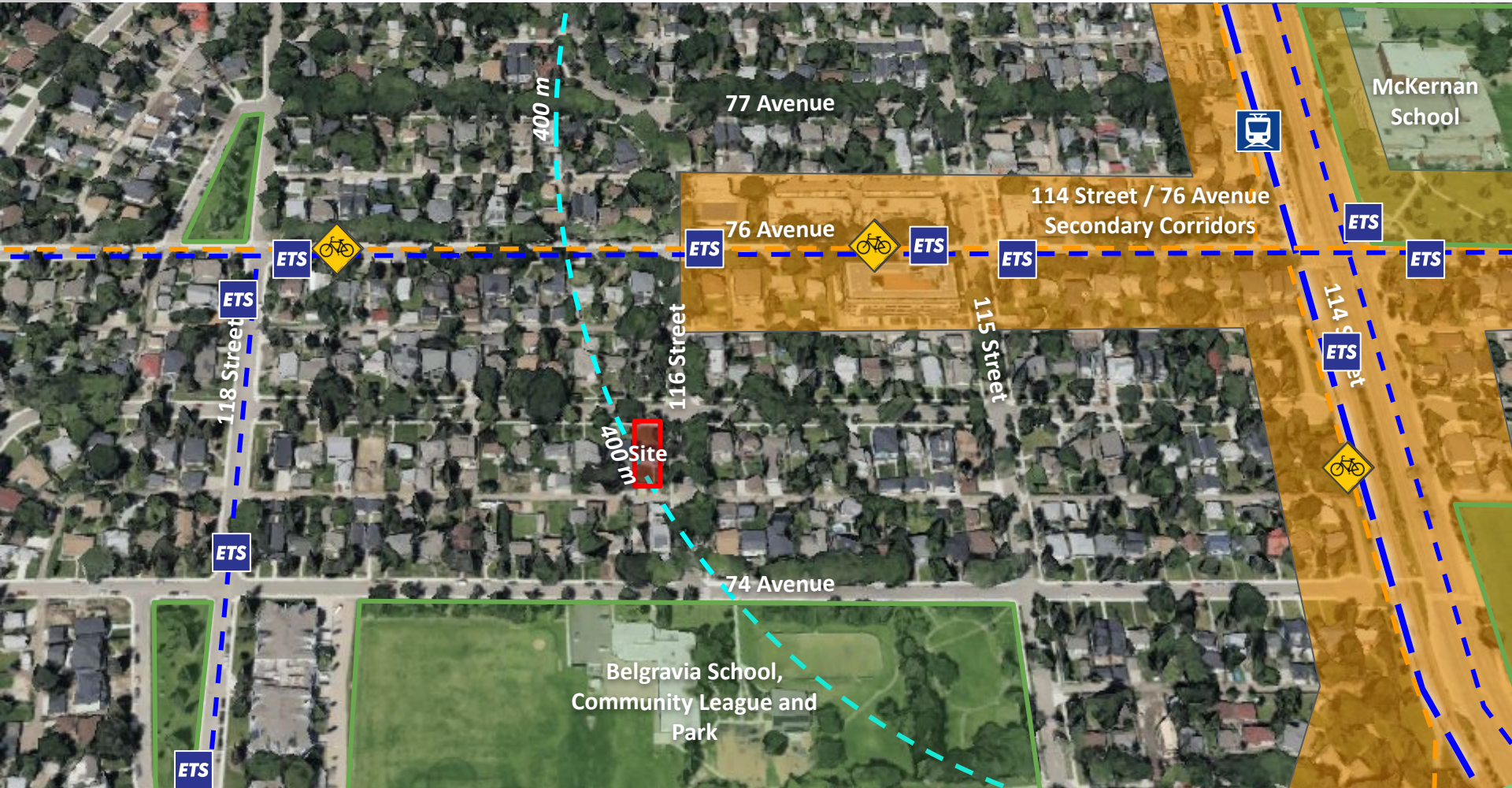


ITEM 3.7  
BYLAW 21184  
BELGRAVIA

DEVELOPMENT  
SERVICES  
Aug. 18, 2025

Edmonton





# 3 COMMUNITY INSIGHTS

## Comments (9)

### Residents (8)

- Traffic/parking congestion
- Neighbourhood character

### Belgravia Community League

- Land speculation
- Housing affordability
- Adverse climate effects
- Airbnb or temporary lodging



MAILED NOTICE  
Mar 4, 2025



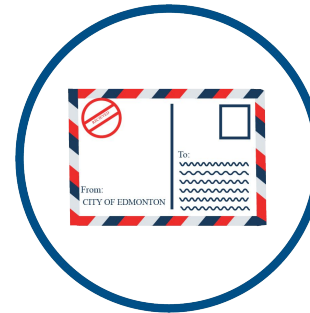
CITY WEBPAGE  
Mar 4, 2025



1:1 COMMUNICATION  
Ongoing



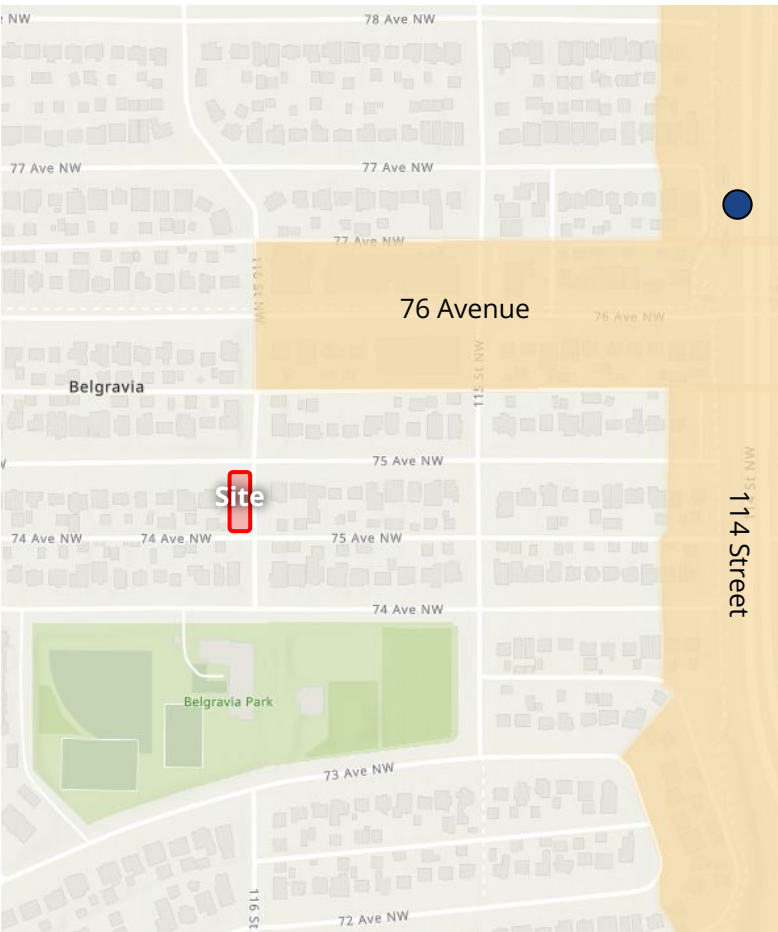
SITE SIGNAGE  
Mar 24, 2025



PUBLIC HEARING  
NOTICE  
May 15, 2025



JOURNAL AD  
May 23 & 31,  
2025

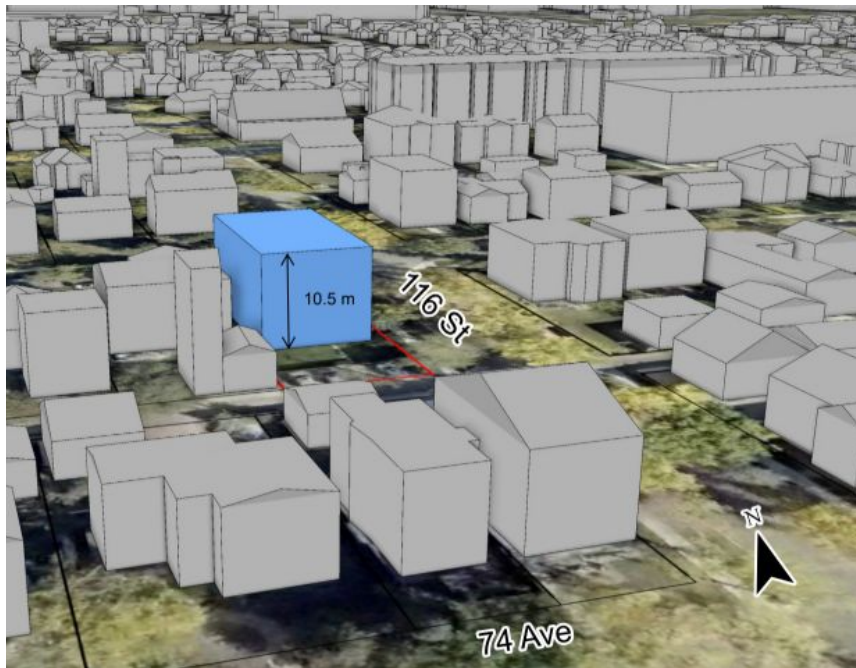


Support more intense Small Scale residential on corner sites in locations outside of a Node or Corridor Area:

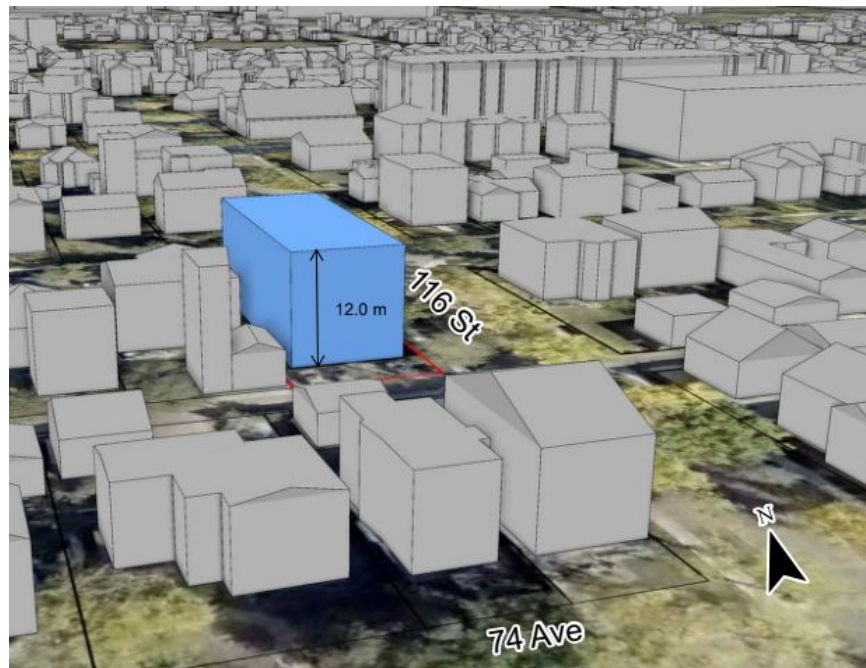
- ✓ **Within 100 metres of a Node or Corridor Area,**
- ✓ **Within 400 metres of a Mass Transit Station, or**
- Along an Arterial Roadway or a Collector Roadway



## 5 ZONING COMPARISON



**CURRENT:** RS Zone



**PROPOSED:** RSM h12.0 Zone



ADMINISTRATION'S RECOMMENDATION: **APPROVAL**