



ITEMS 3.8 & 3.9  
BYLAWS 21194 & 21195  
CROMDALE

DEVELOPMENT  
SERVICES  
Aug. 18 2025

Edmonton



# 3 COMMUNITY INSIGHTS

## Respondents (10)

### Opposition (7)

- Parking and traffic congestion
- Neighbourhood character
- Height concerns

### Support (3)

- Idea location for additional housing



CITY WEBPAGE  
Jan 6, 2025



MAILED NOTICE  
Jan 7, 2025



1:1 COMMUNICATION  
Ongoing



SITE SIGNAGE  
Jan 15, 2025

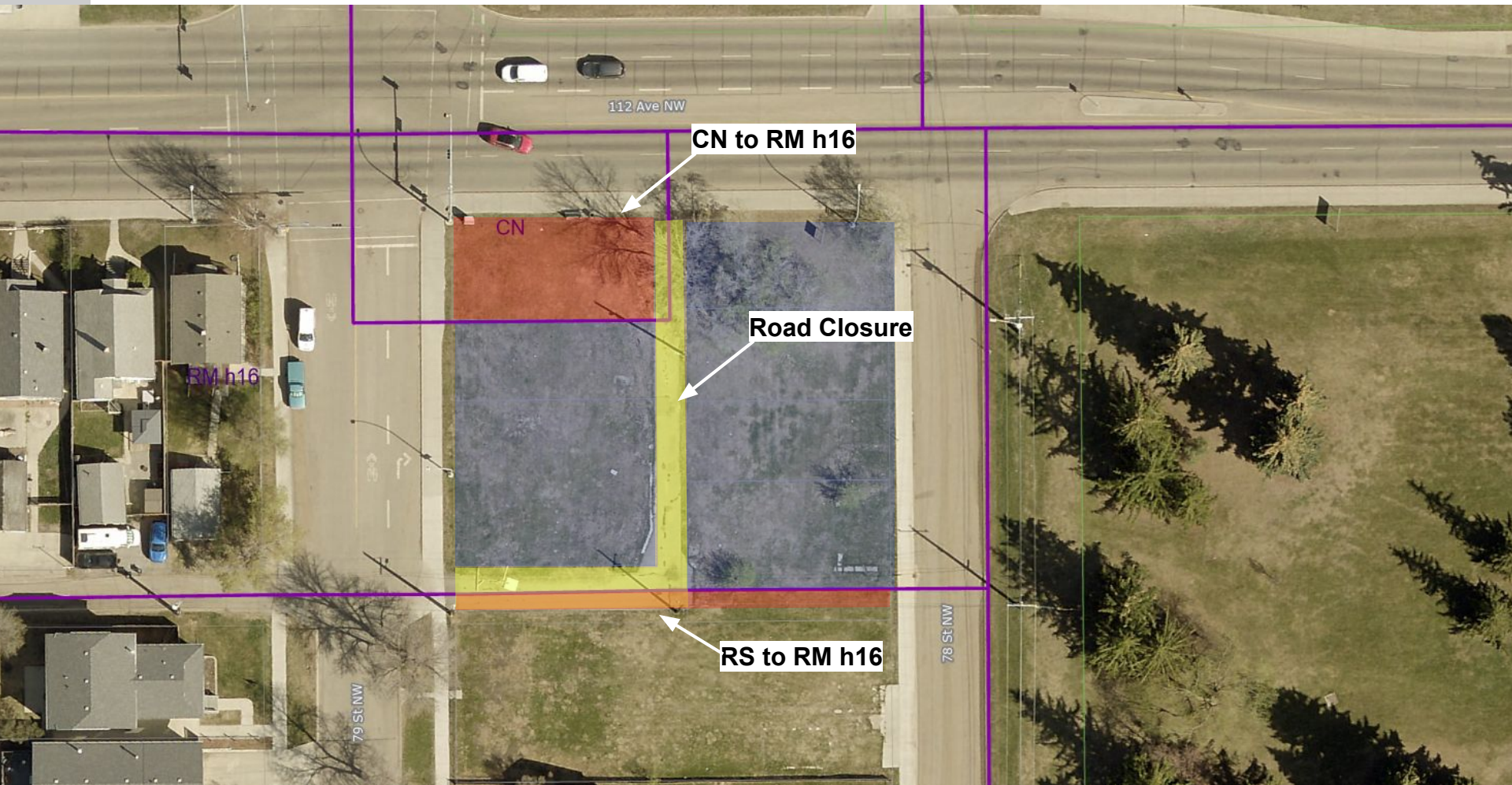


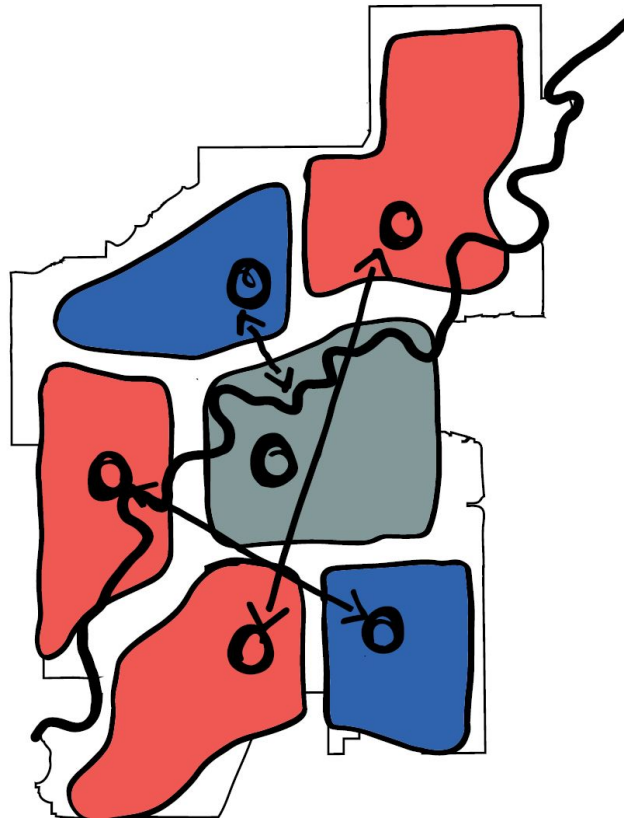
PUBLIC HEARING  
NOTICE  
May 15, 2025



JOURNAL AD  
May 23 & 31,  
2025

# 4 REZONING & ROAD CLOSURE





THE CITY PLAN - Community of  
Communities



NORTH CENTRAL DISTRICT PLAN -  
Map 4: Land Use Concept

### Support Low Rise:

Outside of Nodes and Corridors:



**On or adjacent to sites zoned for greater than Small Scale** development or for commercial or mixed use development and **along an Arterial Roadway** or Collector Roadway

Urban Mix



ADMINISTRATION'S RECOMMENDATION: **APPROVAL**