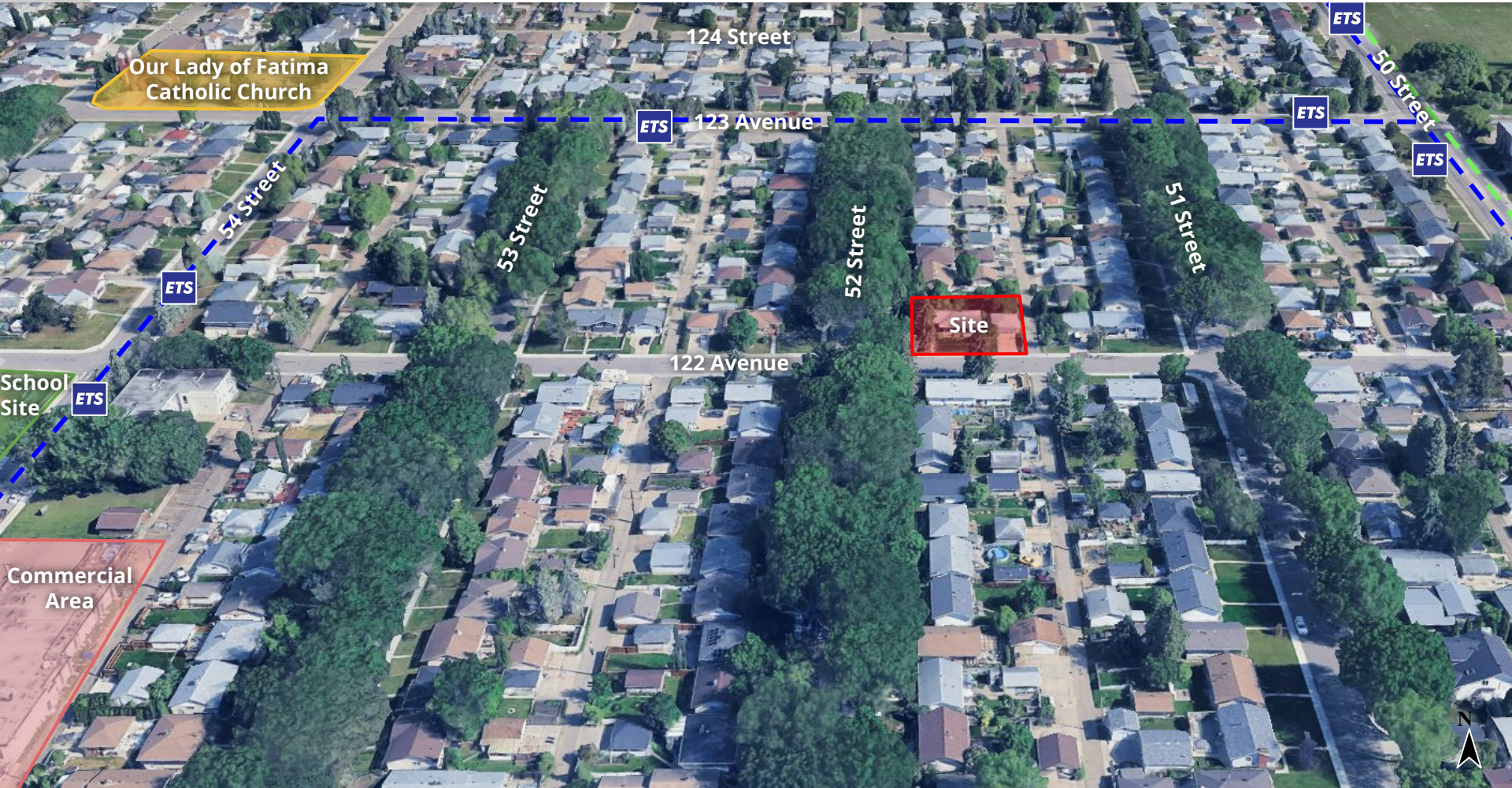


Aerial Image captured Fall 2024

ITEM 3.11  
BYLAW 21180  
NEWTON

DEVELOPMENT  
SERVICES  
AUG 18, 2025

Edmonton



Support Low Rise development outside of Nodes and Corridors that **meet at least one** of the following criteria:

- ❌ On corner sites at the edge of the neighbourhood where the block face fronts onto an Arterial Roadway or Collector Roadway,
- ❌ On or adjacent to sites zoned for greater than Small Scale development or for commercial or mixed use development and along an Arterial Roadway or Collector Roadway, or
- ❌ Within 400 metres of Mass Transit Stations and along an Arterial Roadway or Collector Roadway.



North Central District Plan  
Map 4: Land use Concept to 1.25 Million

## Respondents (18)

### Opposition (14)

- Character
- Height/Scale (impact to privacy/sunlight)
- Traffic/Parking
- Property Values
- Loss of trees
- Safety/Crime
- Family displacement
- Speculation
- Potential for Commercial
- Construction Impacts (Noise, Vibration)

### Questions (4)



CITY WEBPAGE  
Jan 10, 2025



MAILED NOTICE  
Feb. 12 and Mar 6,  
2025



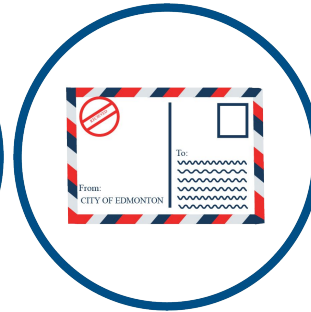
1:1 COMMUNICATION  
Ongoing



CL MEETING  
Mar. 4, 2025



SITE SIGNAGE  
March 20, 2025



PUBLIC HEARING  
NOTICE  
May 15, 2025



JOURNAL AD  
May 23 and 31,  
2025



ADMINISTRATION'S RECOMMENDATION: **NON-SUPPORT**