

**DC1.19986 to DC
6904 & 6810 Gateway Blvd NW
& 10340 - 68 Ave NW**

DC1.19986 to DC (CPR West)

New Road Construction

DC1.19986 to DC (CPR West)

ITEMS 3.33 & 3.34

CHARTER BYLAW 21275 & BYLAW 21276
STRATHCONA JUNCTION & ALLENDALE

DEVELOPMENT
SERVICES
AUG 18, 2025

Edmonton



3 COMMUNITY INSIGHTS

Respondents (2)

Opposition (2)

- New 69th Ave connection needs to be wide enough to accommodate street parking.
- Worried car dealership won't provide enough employee parking.
- Street parking is already congested with illegal long term parking.



PRE-APPLICATION
Aug 27, 2024



CITY WEBPAGE
Mar 4, 2025



MAILED NOTICE
Mar 13, 2025



1:1 COMMUNICATION
Ongoing



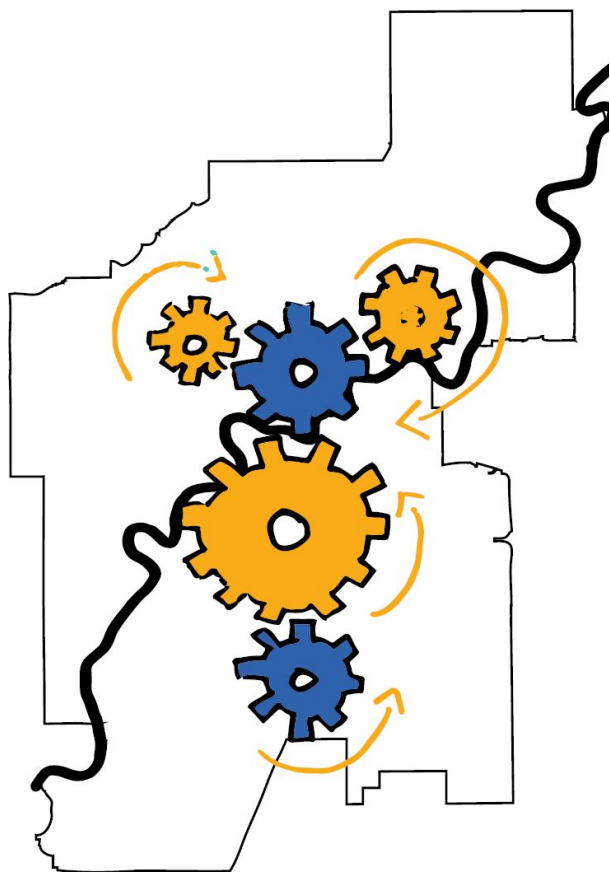
SITE SIGNAGE
Apr 3, 2025



PUBLIC HEARING
NOTICE
Jul 24, 2025



JOURNAL AD
Aug 1 & 9, 2025



CATALYZE AND CONVERGE

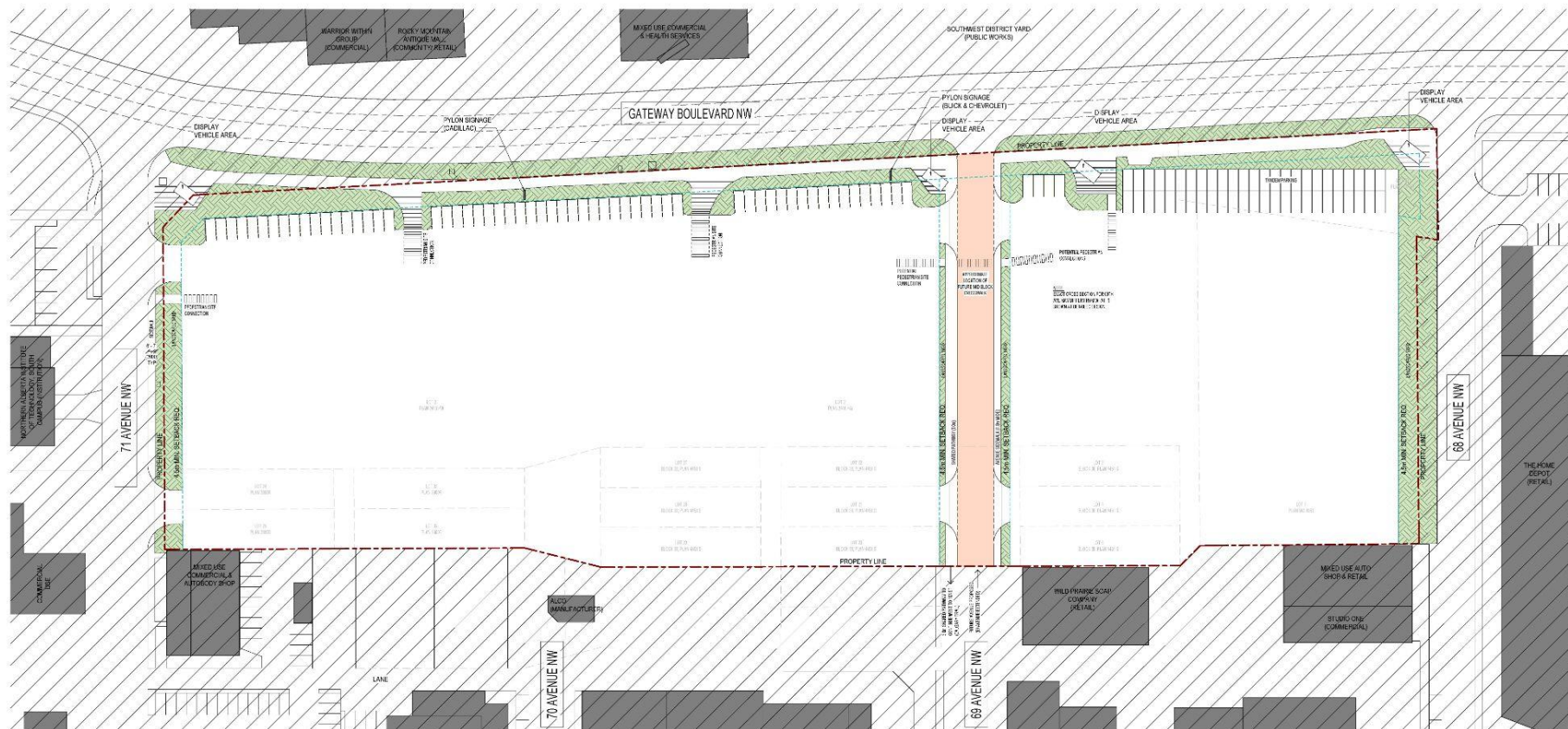


SCONA DISTRICT PLAN: TRANSIT

SCONA DISTRICT PLAN: ACTIVE
TRANSPORTATION

Primary Corridor

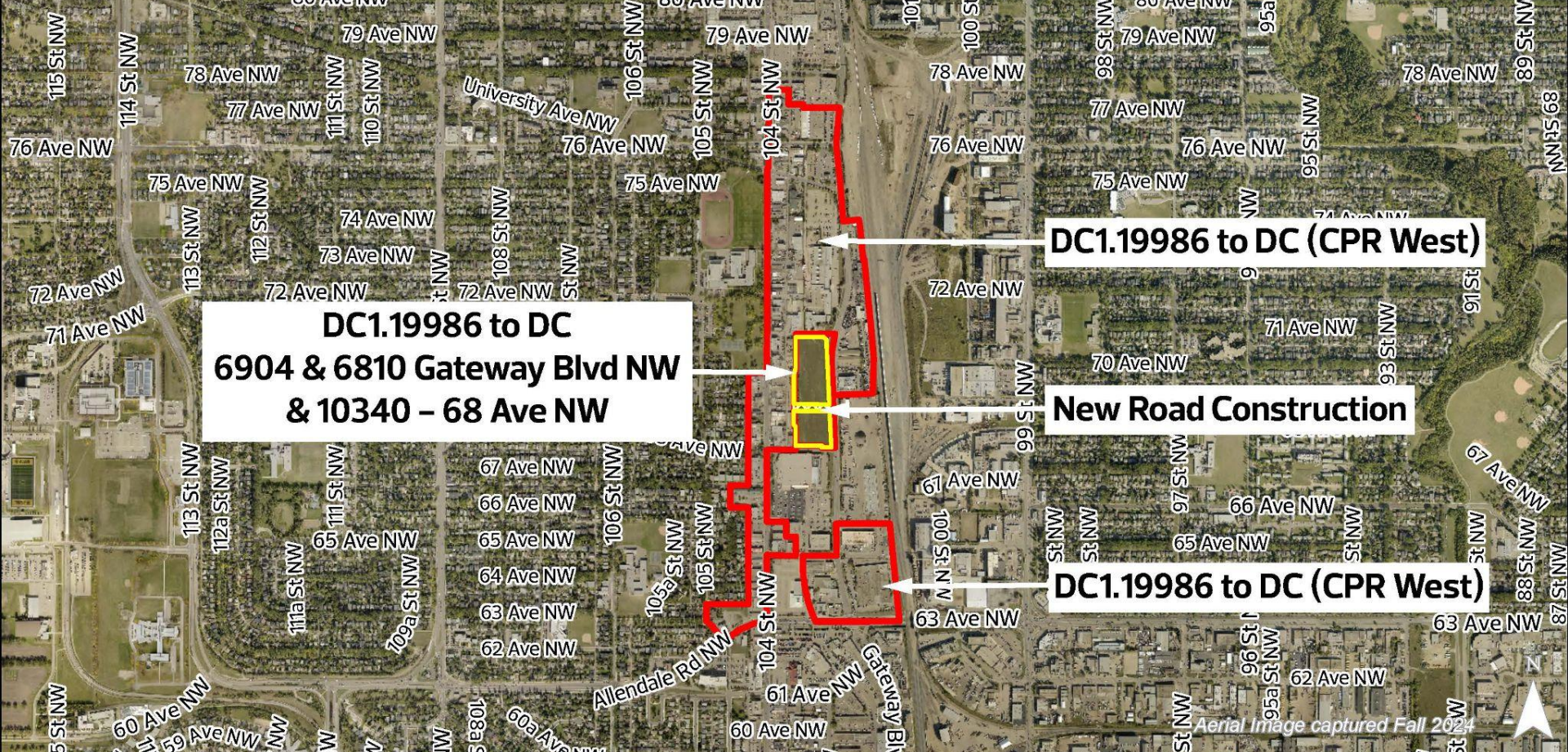




7 PROJECT RENDERINGS



APPLICANT'S RENDERING SHOWN TO EDMONTON DESIGN COMMITTEE



DC1.19986 to DC
6904 & 6810 Gateway Blvd NW
& 10340 – 68 Ave NW

DC1.19986 to DC (CPR West)

New Road Construction

DC1.19986 to DC (CPR West)

ADMINISTRATION'S RECOMMENDATION: **APPROVAL**