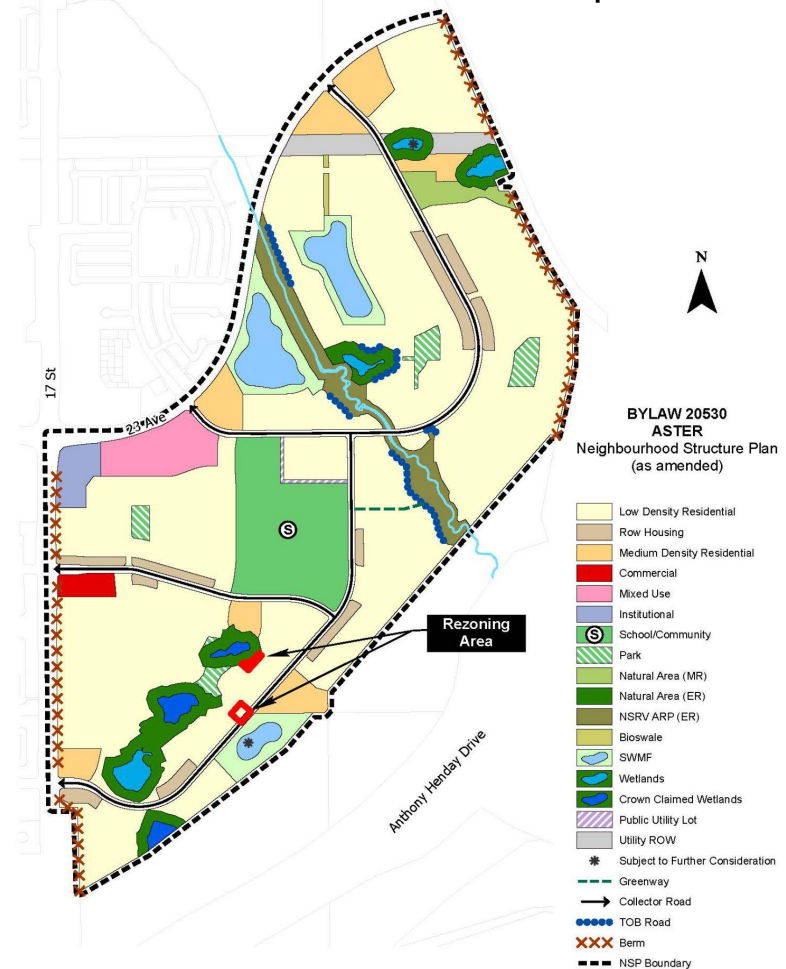


Aerial Image captured Fall 2024

ITEM 3.14
BYLAW 21290
ASTER

DEVELOPMENT
SERVICES
SEP 15, 2025





Note: Location of collector roads and configuration of stormwater management facilities are subject to minor revisions during subdivision and rezoning of the neighbourhood and may not be developed exactly as illustrated.

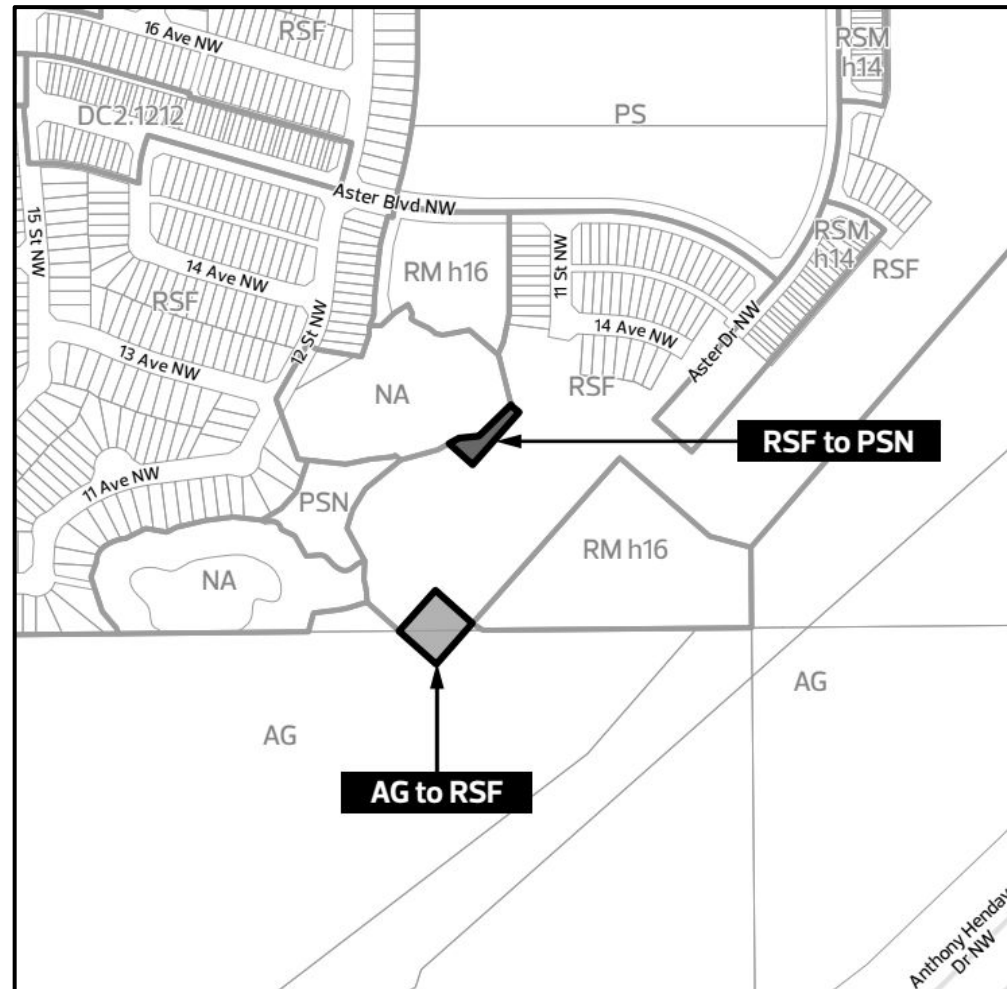
3 PROPOSED ZONING

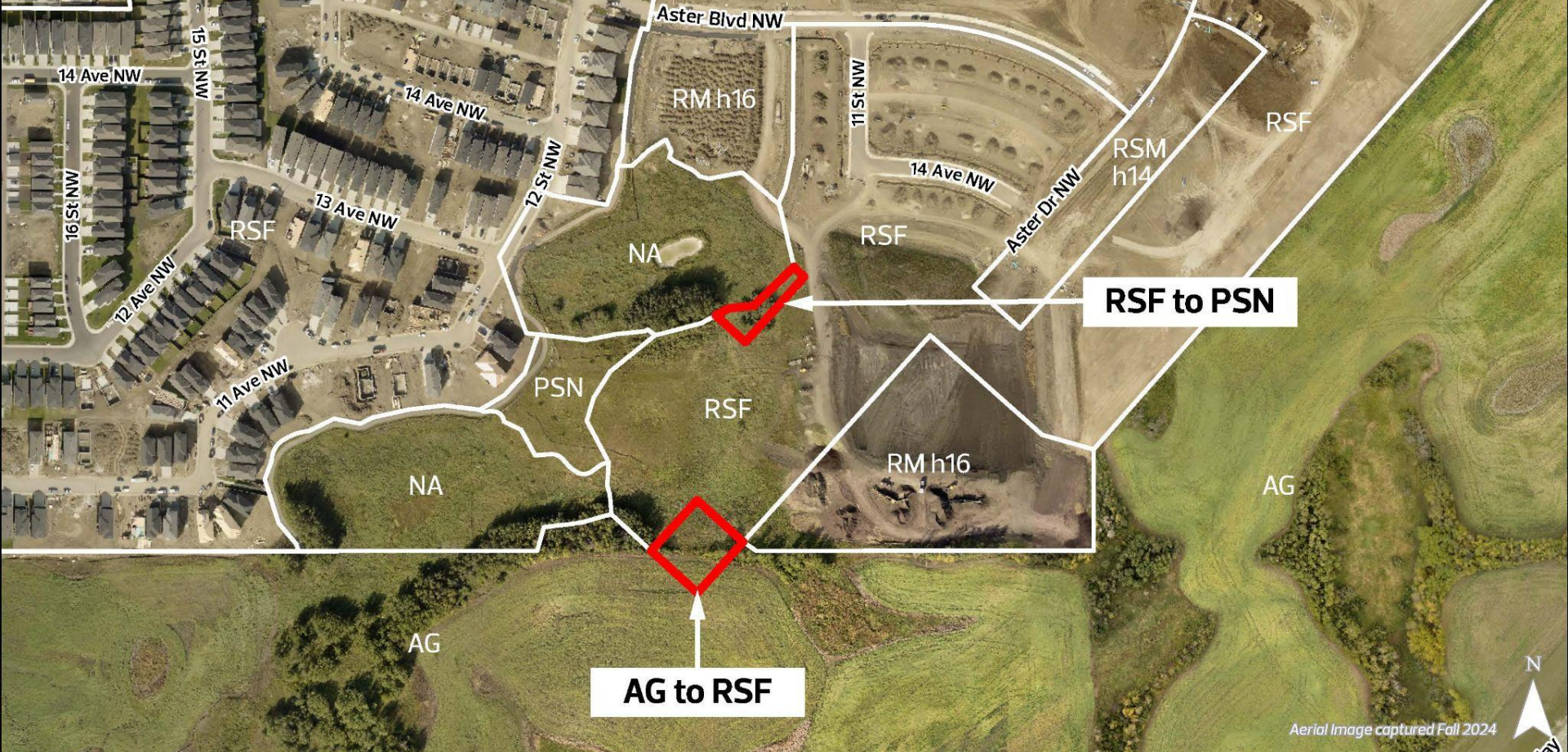
- **Small Scale Flex Residential Zone (RSF):**

- Small scale residential development, including detached, attached and multi-unit housing.

- **Neighbourhood Parks & Services Zone (PSN):**

- Construction of a drainage inlet to a wetland.
- In general, the PSN Zone allows for limited development on parkland intended to serve neighbourhood-level needs and accommodates limited active and passive recreation opportunities.





ADMINISTRATION'S RECOMMENDATION: **APPROVAL**