

Charter Bylaw 21285

A Bylaw to amend Bylaw 14380, as amended,
Arterial Roads for Development
Amendment No. 31

Edmonton City Council enacts:

1. Bylaw 14380, the ARTERIAL ROADS FOR DEVELOPMENT BYLAW, as amended, is hereby further amended by:
 - a. replace Schedule “H” with the new Schedule “H”, attached as Appendix “A” to this Bylaw.

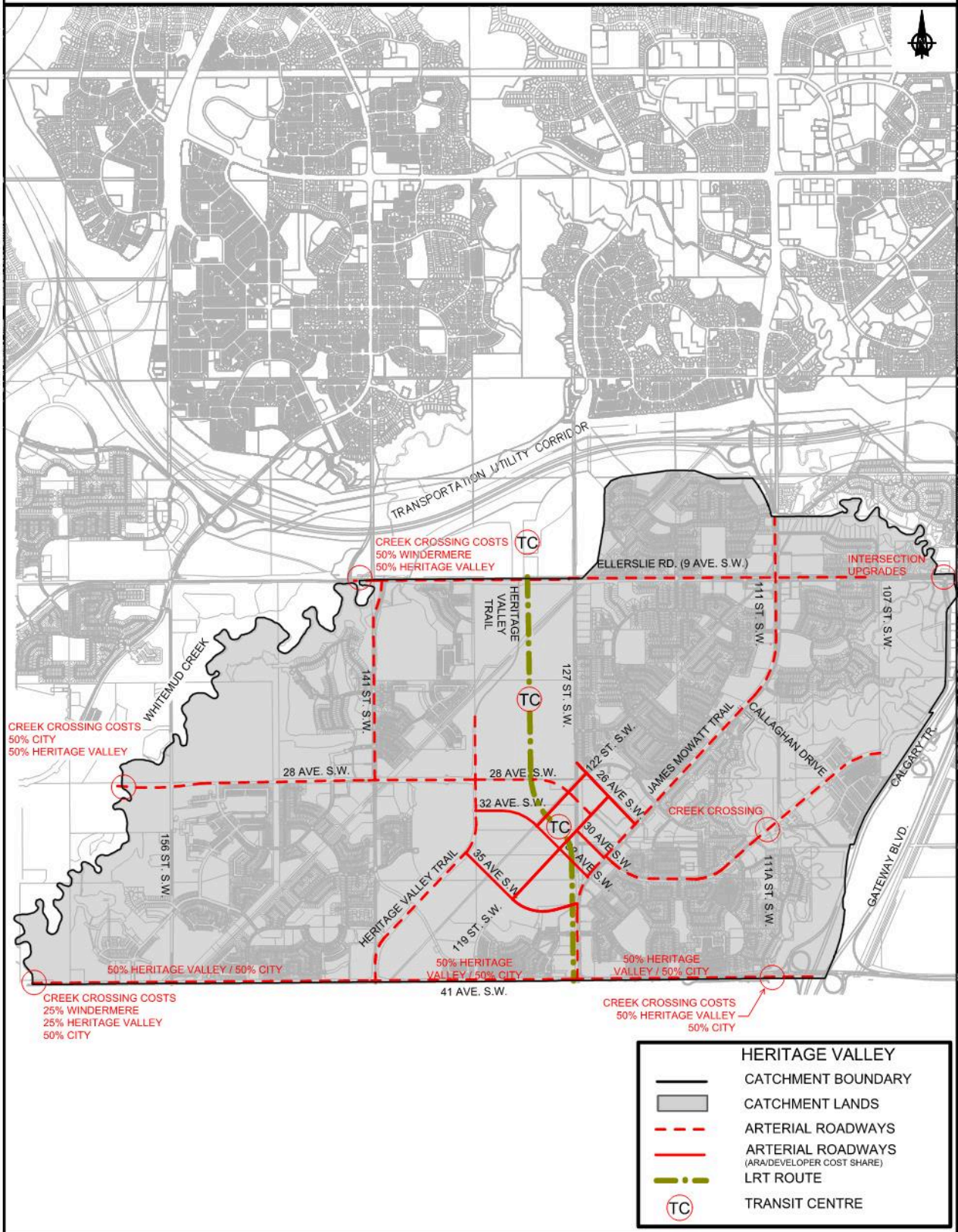
READ a first time this	day of	, A. D. 2025;
READ a second time this	day of	, A. D. 2025;
READ a third time this	day of	, A. D. 2025;
SIGNED and PASSED this	day of	, A. D. 2025.

THE CITY OF EDMONTON

MAYOR

CITY CLERK

Schedule "H" - Heritage Valley - Catchment & Associated Roadways



Schedule “H”

Heritage Valley – Catchment & Associated Roadways

The following Arterial Road Improvements are included in the Heritage Valley Catchment:

1. Ellerslie Road (two lanes) – 107 Street S.W. to 127 Street S.W.
2. Ellerslie Road (two lanes) – 127 Street S.W. to West of Heritage Valley Trail S.W.
3. Ellerslie Road (four lanes) – West of Heritage Valley Trail S.W. to Whitemud Creek
4. 41 Avenue S.W. (second eastbound lane) – from west of the Allard Road S.W. and 41 Avenue S.W. intersection to approximately 370 metres east of the Allard Road S.W. and 41 Avenue S.W. intersection
5. 41 Avenue S.W. (four lanes) – Calgary Trail to Whitemud Creek (50%/50% cost share with the City of Edmonton)
6. 111 Street S.W. (two lanes) – Transportation Utility Corridor to Ellerslie Road
7. 111 Street S.W. (four lanes) – Ellerslie Road to North of 41 Avenue S.W.
8. 127 Street S.W. (two lanes) – Ellerslie Road to 20 Avenue S.W. (roadway construction is complete – subsequent over expenditure is cost recoverable)
9. 141 Street S.W. (four lanes) – Ellerslie Road to 28 Avenue S.W.
10. Blackmud Creek crossing at 30 Avenue S.W.
11. Blackmud Creek crossing at 41 Avenue S.W. (50%/50% cost share with the City of Edmonton)
12. Whitemud Creek crossing at Ellerslie Road (50%/50% cost share with the Windermere ARA Catchment)
13. Whitemud Creek crossing at 28 Avenue S.W. (50%/50% cost share with the City of Edmonton)
14. Whitemud Creek crossing at 41 Avenue S.W. (25%/25%/50% between the Heritage Valley ARA Catchment, the Windermere ARA Catchment and the City of Edmonton, respectively)
15. Transit centre right-of-way dedication north of 28 Avenue SW, west of 127 Street SW
16. Transit centre right-of-way dedication between 119 Street SW and 122 Street SW, north of 32 Avenue SW
17. Heritage Valley Trail S.W. (two lanes) - 28 Avenue S.W. to Paterson Link S.W.
18. Heritage Valley Trail S.W. (four lanes) – 28 Avenue S.W. to 41 Avenue S.W.
19. 26 Avenue S.W. – James Mowatt Trail to 127 Street SW (50% cost share with the Heritage Valley ARA and private development)
20. 28 Avenue S.W. (four lanes) – 119 Street S.W. to Whitemud Creek
21. 30 Avenue S.W. – James Mowatt Trail to 119 Street S.W. (50% cost share with the Heritage Valley ARA and private development)
22. 32 Avenue S.W. – James Mowatt Trail to Heritage Valley Trail S.W. (50% cost share with the Heritage Valley ARA and private development)
23. 35 Avenue S.W. – James Mowatt Trail to Heritage Valley Trail S.W. (50% cost share with the Heritage Valley ARA and private development)
24. 119 Street S.W. – 35 Avenue S.W. to 32 Avenue S.W. (50% cost share with the Heritage Valley ARA and private development)
25. 119 Street S.W. – 32 Avenue S.W. to 26 Avenue S.W. (50% cost share with the Heritage Valley ARA and private development)
26. 122 Street S.W. – 32 Avenue S.W. to 26 Avenue S.W. (50% cost share with the Heritage Valley ARA and private development)
27. 30 Ave S.W. (two lanes) – Calgary Trail to Allard Gate S.W.
28. 30 Ave S.W. (four lanes) – Allard Gate S.W. to James Mowatt Trail

29. QE II highway and Ellerslie Road S.W. Southbound Ramp Intersection - remove right-turn channelization and replace with two right-turn lanes, including signal upgrades
30. Ten million dollars for 41 Avenue S.W. Interchange or 127 Street S.W. Interchange at the QE II highway (as per the Heritage Valley Memorandum of Understanding)