



ITEMS 3.9 & 3.10
BYLAWS 21293 & 21294
ELLERSLIE INDUSTRIAL

DEVELOPMENT
SERVICES
SEP 15, 2025



SITE CONTEXT



3 PROPOSED ZONING

Public Utility Zone (PU)

- Southeast Edmonton Transit Garage
- Stormwater Management Facility

Ellerslie Medium Industrial Zone (EIM)

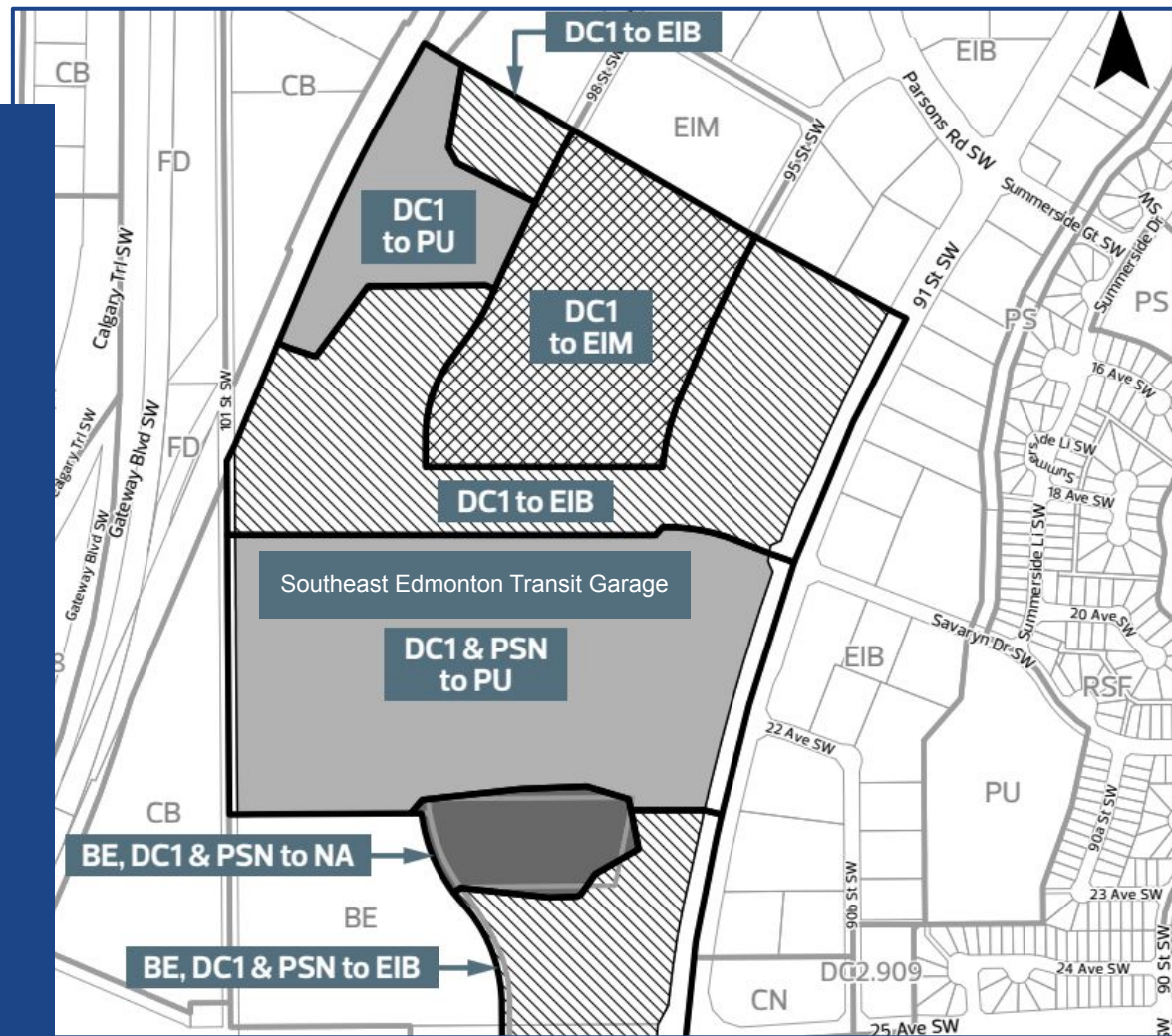
- Medium scale, high quality industrial developments

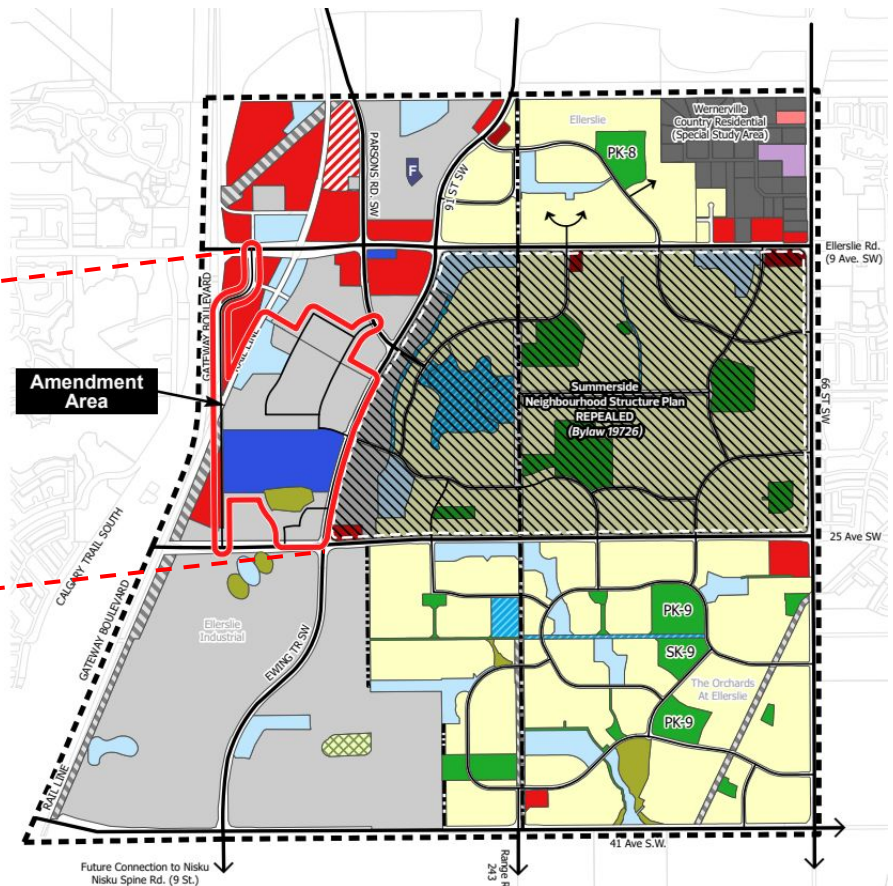
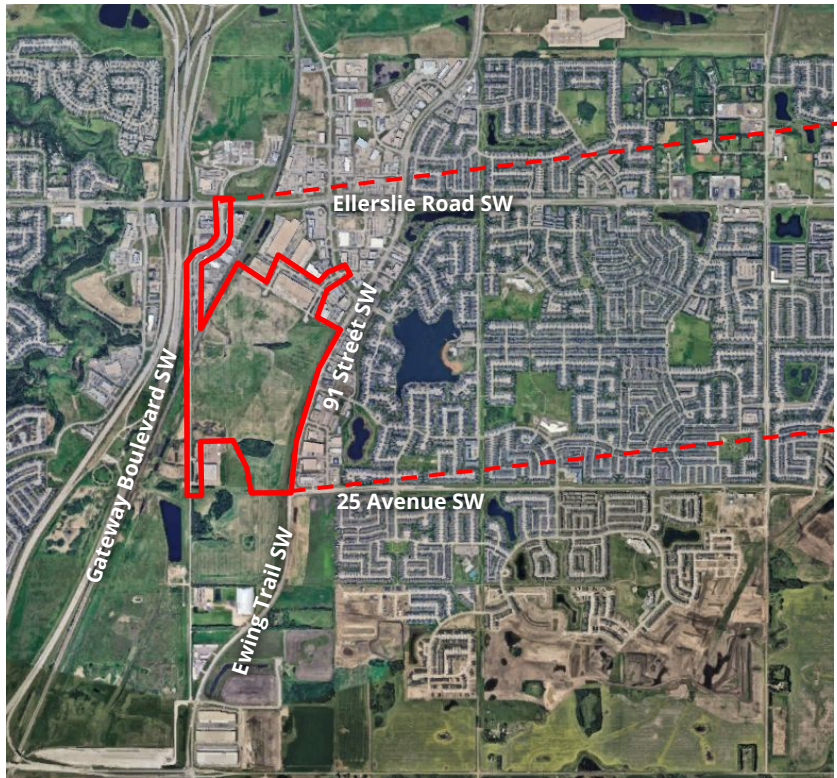
Ellerslie Industrial Business Zone (EIB)

- Light industrial and high technology developments

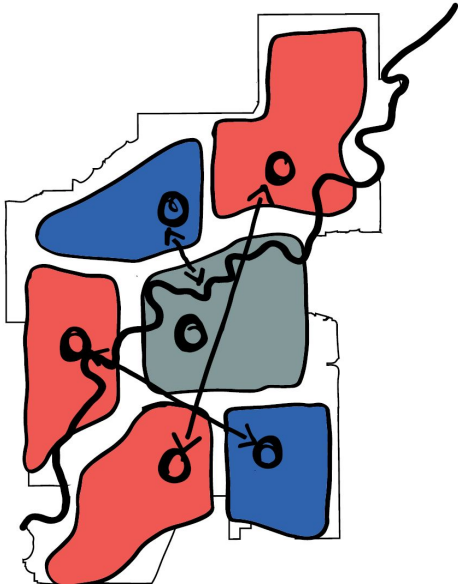
Natural Area Zone (NA)

- Conservation of an existing tree stand

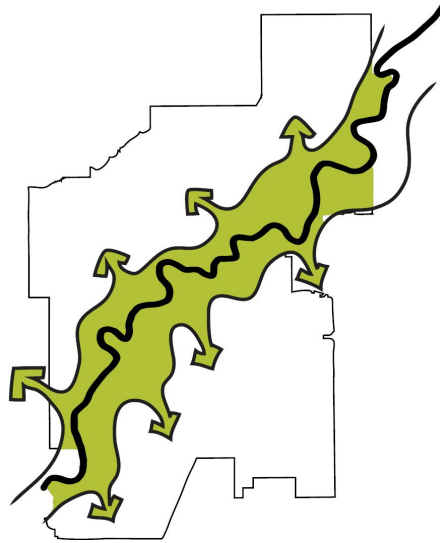




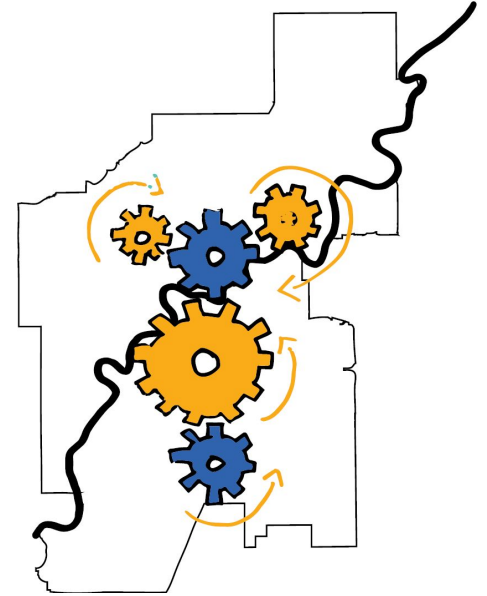
- | | | | |
|---|---------------------|---|---------------------------|
|  | Urban Service |  | Industrial (Special Area) |
|  | Stormwater Facility |  | Natural Area |



COMMUNITY OF COMMUNITIES



GREENER AS WE GROW



CATALYZE AND CONVERGE



ADMINISTRATION'S RECOMMENDATION: **APPROVAL**