

A photograph of a white and blue Edmonton Transit System (ETS) train, viewed from a side-on perspective, moving along tracks. The train has multiple windows and doors. The text "Edmonton Transit System" is visible on the side of the train, and the "ETS" logo is on the front. The background is a light blue sky.

**Valley Line - Stage 1**

**Site Location Study (SLS) Update and  
Environmental Impact Screening Assessment (EISA)  
Update**

**Transportation Committee Hearing**

**March 25, 2015**

**Edmonton**

A photograph of a white and blue Edmonton Transit System (ETS) train, viewed from a low angle, moving along tracks. The train has multiple cars and the ETS logo is visible on the side. The background is a clear blue sky.

# Meeting Purpose

- Approve the SLS Update and EISA Update
- Approve the major facilities (listed in Attachment 3)
- Approve the proposed upgrading for the construction access route

A photograph of a white and blue Edmonton Transit System (ETS) train moving through a snowy landscape. The train has "Edmonton Transit System" written on its side and the "ETS" logo on the front. The background is a soft-focus view of the train receding into the distance.

# History/Context

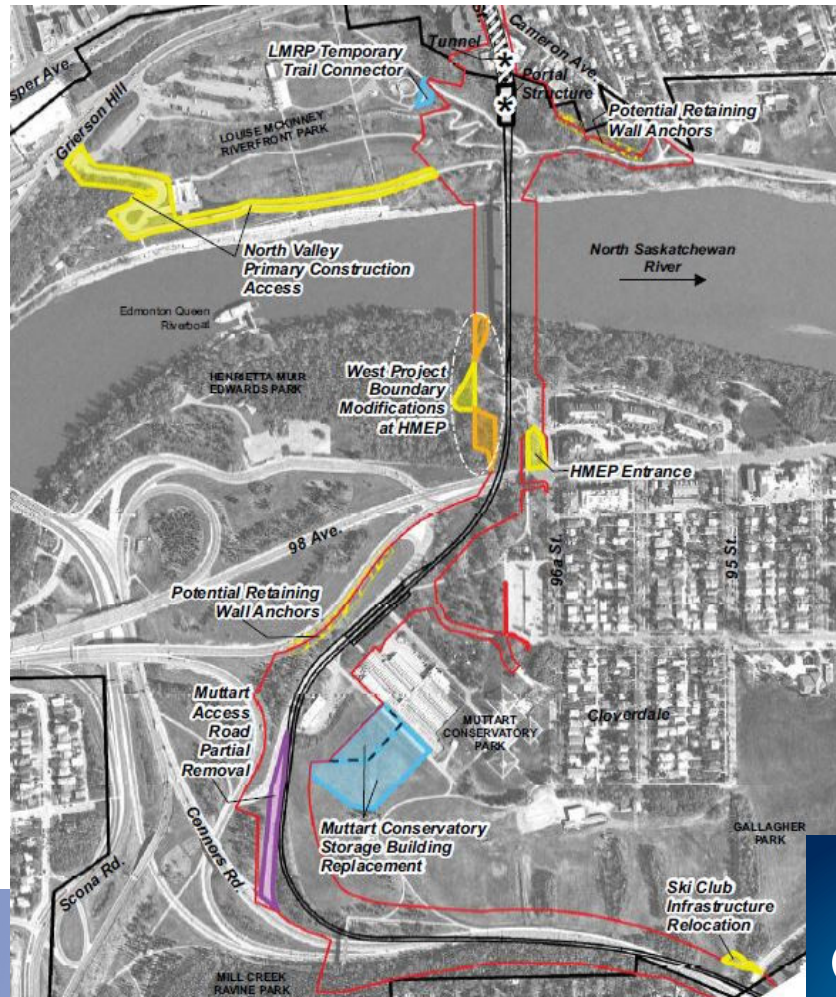
## Council Approvals:

- September 2013, Council deemed the Valley Line river valley crossing and associated major facilities to be essential, and approved the associated SLS and EISA.
- The 2013 EISA recognized that the final design and construction methods will be developed by the winning contractor.
- The 2013 EISA also delineated a Project Area which will be available to the contractor. LRT Design and Construction committed in 2013 that changes requiring work outside the Project Area would require further Bylaw 7188 review.



# What has changed?

- Eight proposed updates:
  - 6 result in changes to the Project Area
  - 2 are new components

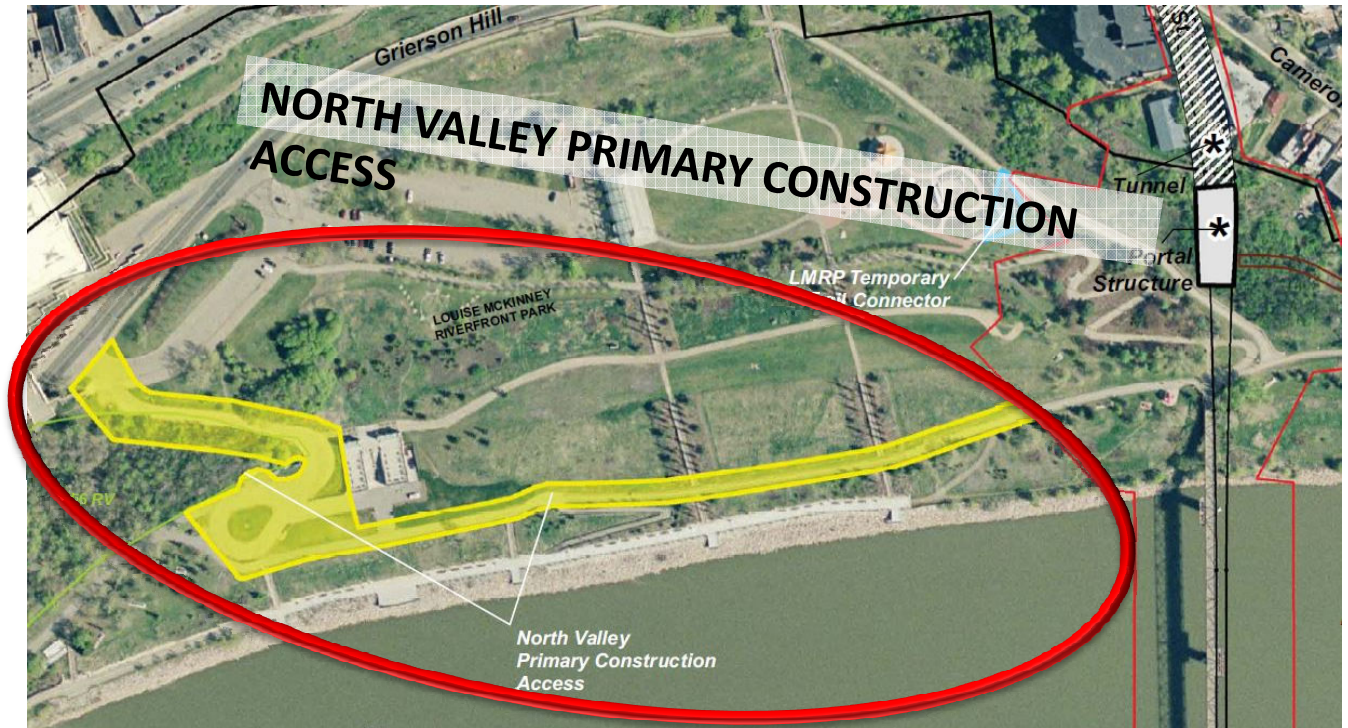




# EISA Update Conclusions: Temporary North Valley Primary Construction Access

With mitigation:

- Short-term, adverse, minor impacts to:
  - habitat
  - connectivity,
  - pathways,
  - general park use, visual resources.
- Long-term, adverse, minor impacts to native vegetation.





# EISA Update Conclusions – West Project Boundary Modification at HMEP

No adverse impacts after mitigation.

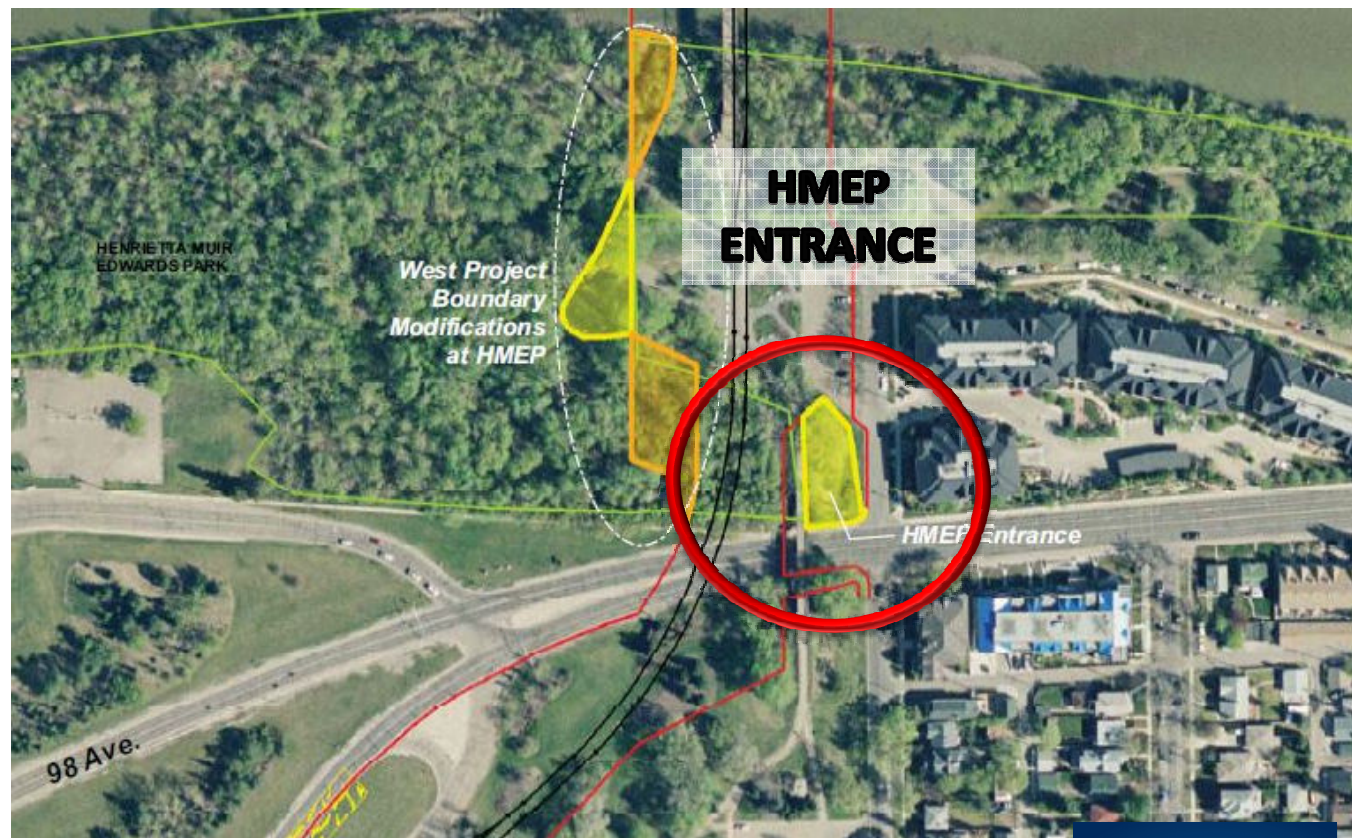
- Positive impacts:
  - Net small increase in native forest
  - Reduction in native forest removal in comparison to 2013 EISA





# EISA Conclusions Update – HMEP Entrance

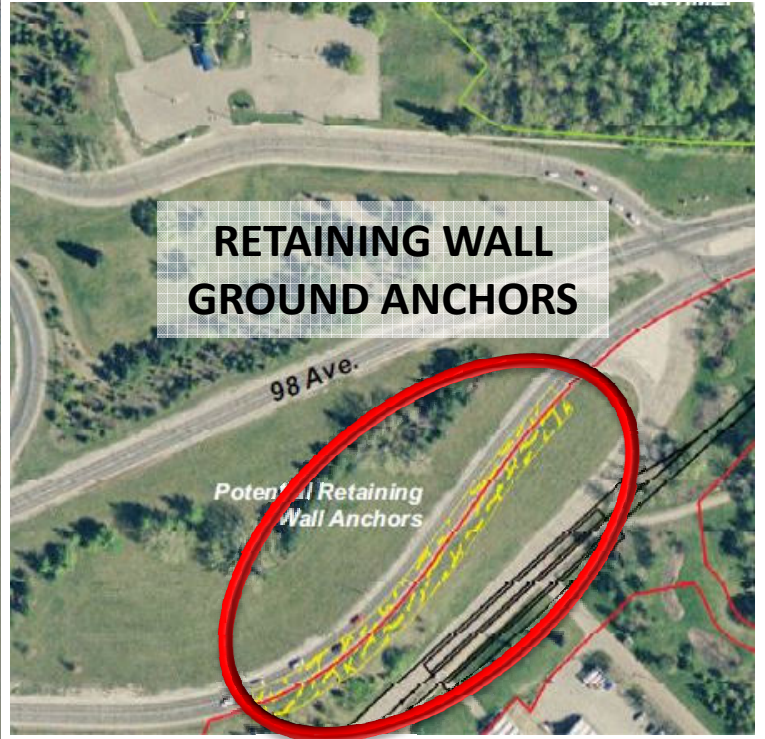
- No adverse impacts after mitigation.





# EISA Update Conclusions— Retaining Wall Ground Anchors

- No adverse impacts after mitigation.





# EISA Update Conclusions— Ski Club Infrastructure Relocation

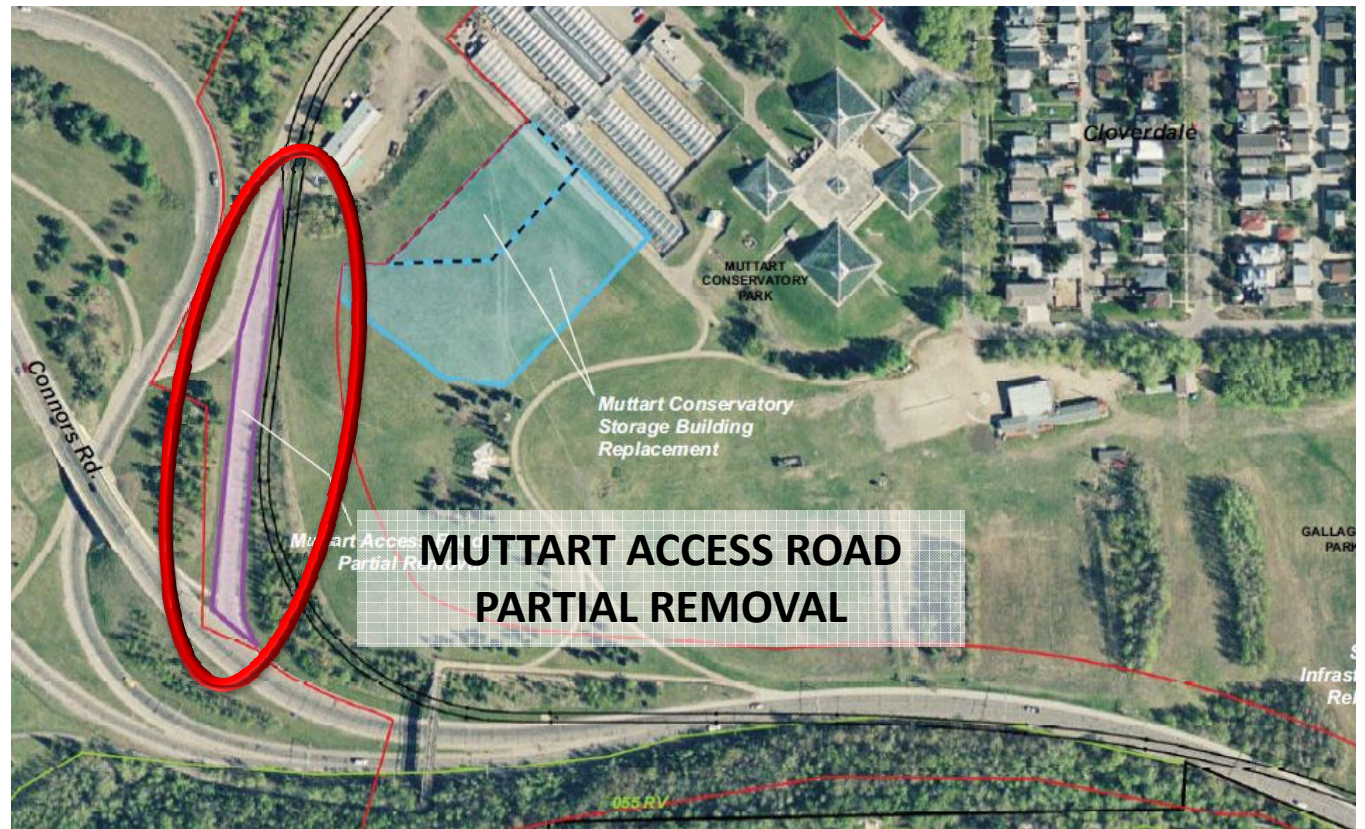
- No adverse impacts after mitigation.





# EISA Update Conclusions – Muttart Access Road Partial Removal

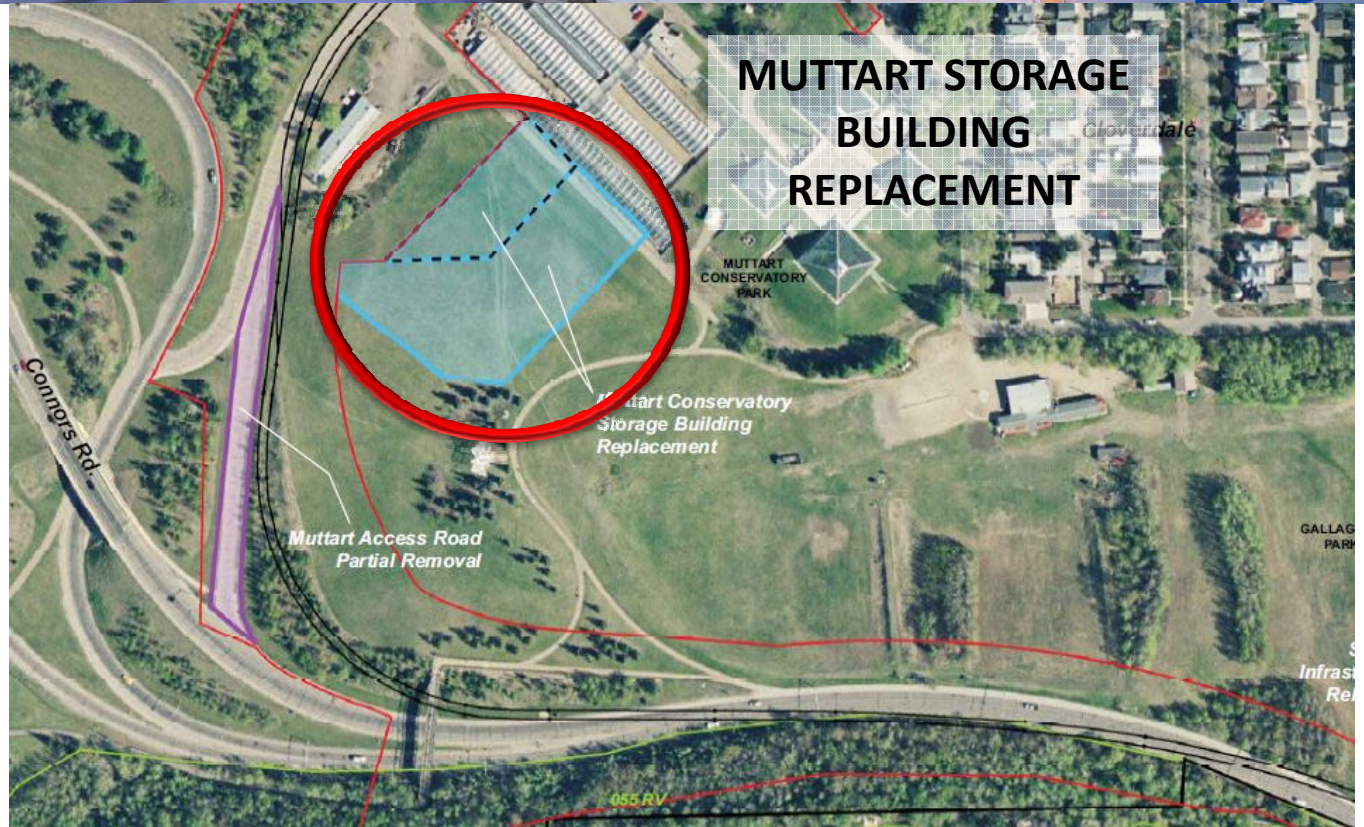
- No adverse impacts after mitigation.
- Positive impact on park green space.





# EISA Update Conclusions – Muttart Storage Building Replacement

- No adverse impacts after mitigation.
- Positive impact – removal of contaminated soils.
- To be completed by the City.





# EISA/SLS Update – LMRP Temporary Trail Connector

- No adverse impacts after mitigation.
- To be completed by the City.





**Slide 12**

---

**SR1**

Would it be possible to remove the yellow from this diagram?

Sarah Rossman, 03/18/2015

A photograph of a white and blue Edmonton Transit System (ETS) train moving along tracks. The train is the primary visual element of the top banner. The text 'EISA Update – Mitigation Commitments' is overlaid in white on a semi-transparent blue background.

# EISA Update – Mitigation Commitments

## New Mitigation Commitments

- The EISA Update identified some additional mitigation measures, over and above those specified in the 2013 EISA.
- Key mitigation commitments are associated with the two larger Project Area adjustments:
  - North Valley Primary Construction Access
  - Muttart Storage Building Replacement



A photograph of a white and blue Edmonton Transit System (ETS) train moving through a snowy landscape. The train is the primary focus of the top banner, with the ETS logo visible on its side. The background is a soft-focus view of the train tracks and surrounding environment.

# EISA Update – New Mitigation Commitments

## North Valley Primary Construction Access

- LRT D&C to undertake additional route-specific geotechnical studies
- Winning bidder to:
  - Adhere to all geotechnical recommendations
  - Justify any native vegetation clearing and undertake native vegetation restoration
  - Ensure special events (e.g. Dragon Boat Festival and Red Bull Crashed Ice) are accommodated
  - Implement vehicle and pedestrian safety measures
  - Have an archaeologist to monitor any excavation activities

A photograph of a white and blue Edmonton Transit System (ETS) train moving along tracks. The train is the primary visual element of the top banner, with the ETS logo visible on its side.

# EISA Update – Mitigation Commitments

## Muttart Conservatory Storage Building Replacement

- City to undertake:
  - Site-specific geotechnical study and incorporate all recommendations for site and overall slope stability
  - Manage run-off during construction
  - Implementation of temporary shared-use path detour and appropriate notifications
  - Notify Edmonton Folk Music Festival regarding the festival's temporary bike compound
  - Develop contaminated soils management plan



A photograph of a white and blue Edmonton Transit System (ETS) train moving along tracks. The train is the primary background image for the top half of the slide. The text 'Edmonton Transit System' and the 'ETS' logo are visible on the train's side.

# EISA/SLS Update- Public Engagement

## Open House

- February 3, 2014 - Old Timer's Cabin.
- 10 display panels regarding the SLS Update and the EISA Update
- Supplementary information on trail detours and ongoing stakeholder engagement
- Approximately 108 individuals attended (25 submitted written or online comments) J4
- Majority of comments extended beyond the focus of the EISA Update
- Written responses identified no new issues related to the assessed project changes

**Slide 16**

---

**J4**

Corrected # of comments from open house: 22 submitted on-site; 3 additional afterward for a total of 25 written/online comments.  
JSA, 03/20/2015



A photograph of a white and blue Edmonton Transit System (ETS) train, viewed from a low angle, moving along tracks. The train has "Edmonton Transit System" and "ETS" branding. The background is a soft-focus outdoor scene.

# EISA/SLS Update

## Next Steps

- Ensure new Project Area and all new mitigation measures are incorporated into the P3 Project Agreement and two City construction contracts.
- Maintain commitment to implement project in manner that respects the river valley bylaw.
- Continue engagement with key river valley stakeholders.
  - Includes Citizen Working Group currently being launched.

A photograph of a white and blue Edmonton Transit System (ETS) train, viewed from a low angle, moving along tracks. The train has "Edmonton Transit System" written on its side and the "ETS" logo on the front. The background is a light blue sky.

# EISA/SLS Update

**Thank you**