



Integrated Infrastructure Services

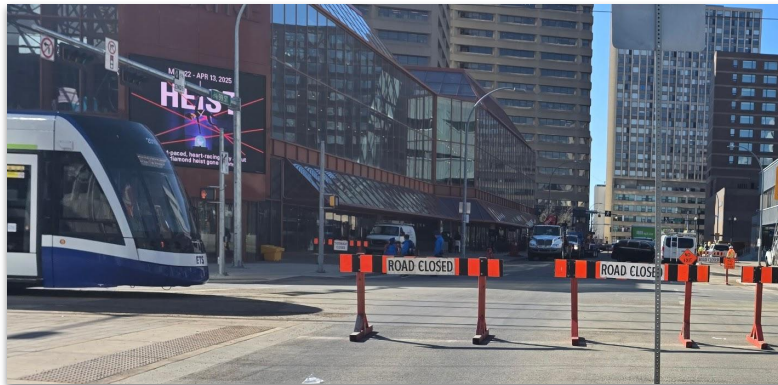
# 2026 Traffic Management Plan

Infrastructure Committee  
February 23, 2026

IIS03361

# 2025 Traffic Challenges & Key Learnings

- Significant Volume of Concurrent Projects
- Cumulative Network Congestion and Neighbourhood Impacts
- Multimodal Challenges and Impacts
- Access to and from the Downtown Core
- Need for Clarity - Rationale Behind Construction
- Preference for more Intensive, Accelerated Work



## 2026 Traffic Management Plan: Five Key Priorities

1	<b>Improved Sequencing of Projects</b>	Coordinate timelines to reduce overlap and knockon effects across projects
2	<b>Prioritize Innovation</b>	Accelerate work using innovative design and constructability techniques
3	<b>Proactive Operational Coordination</b>	Include operational teams in project planning early in the process
4	<b>Improved Integration</b>	Advance engagement with developers and utility companies on work plans
5	<b>Better Communication</b>	Provide transparent, timely information to the community and businesses

# Contributing Factors and Network Challenges

## Capital Program

- 89 Transportation Projects
- 5 LRT Projects

## Population Growth (2023-2025):

- +100,000 Residents
- +80,000 Licensed Drivers

## Travel Patterns

- Post-Pandemic Traffic Changes



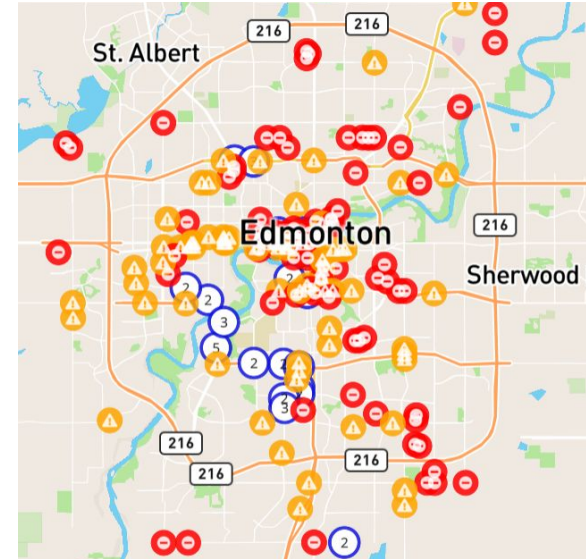
## Proactive Operational Coordination

- Modeling traffic impacts more frequently throughout construction season
- Implementing proactive traffic calming in adjacent neighborhoods to reduce poor driver behaviour
- Strengthening safety in detour accommodations to better protect vulnerable road users
- Adjusting signal timing on connected corridors to improve traffic flow
- Providing clearer, earlier communication about project impacts and mitigation



# Communications

- Proactive Community Engagement
  - Communities, neighbourhoods, businesses
  - Pre-construction events and open houses
- Comprehensive Digital Channels
  - Project websites, [building.edmonton.ca](http://building.edmonton.ca)
  - Media notices, newsletters, social media
- Real-Time Traffic Support
  - Updating navigation tools (Apple, Google Maps)
  - Traffic disruptions map



## Digital

Traffic Map, Project Websites/Newsletters



## On-Site

Construction Bulletins, Wayfinding Signs, Road Signs (Static/Dynamic)



## Outreach

Media, Social Media, Direct Mail, Public Events/Open Houses

Edmonton

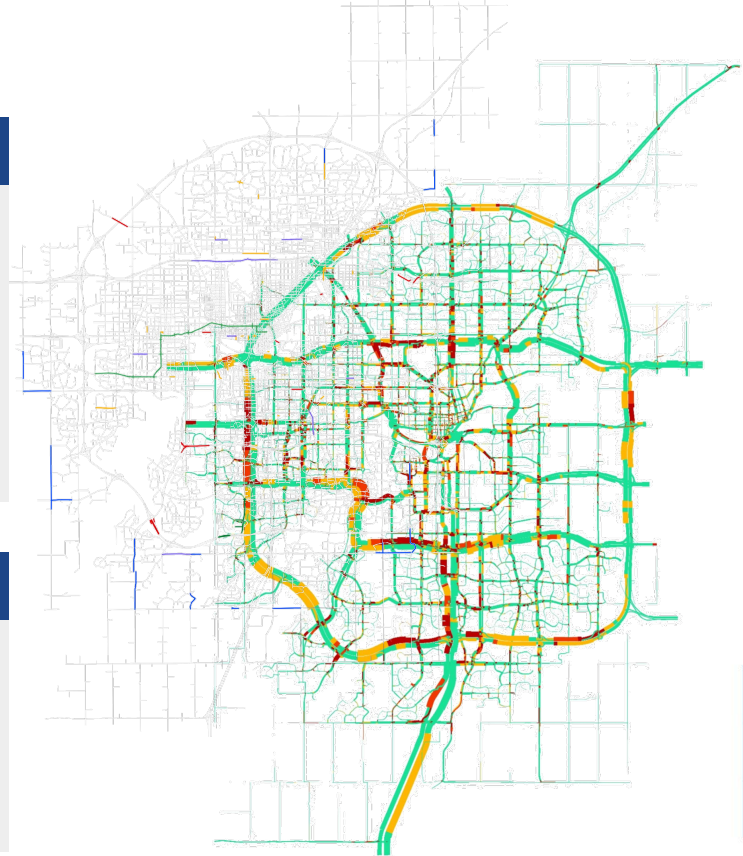
# Traffic Modelling

## Inputs

- City of Edmonton projects
- Planned utility work
- Private development projects
- Population and employment growth
- Travel behavior

## Scenarios Evaluated

- Fall 2025 and Fall 2026
- AM/PM weekday peaks
- With and without utility projects



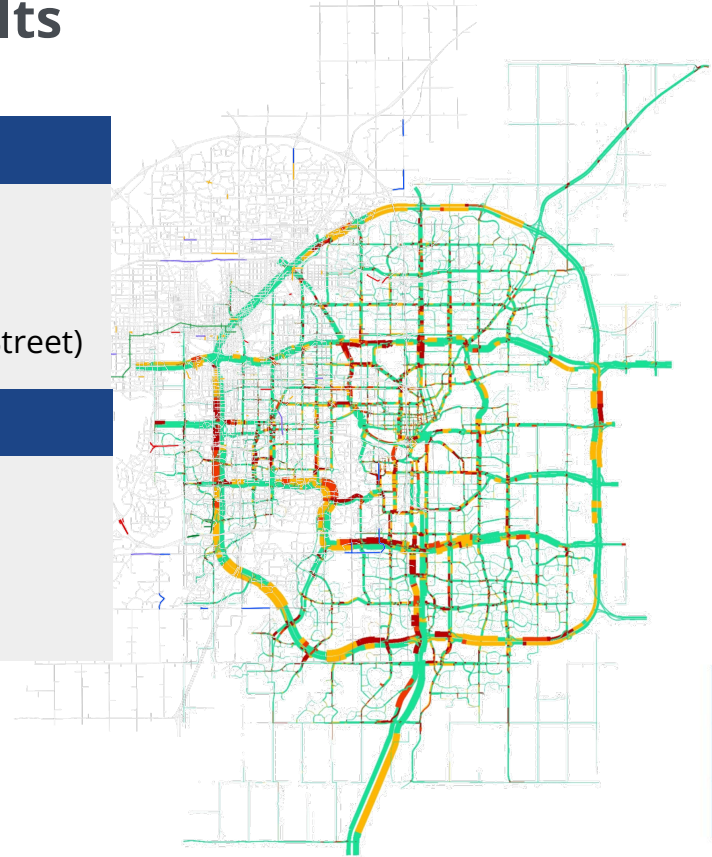
# Traffic Modelling - 2026 Results

## Traffic Areas of Improved Level of Service

- Yellowhead Trail (97 to 121 Street)
- 104 Avenue (105 to 121 Street)
- Whitemud Drive (Anthony Henday Drive to 215 Street)

## Traffic Areas of Decreased Level of Service

- 215 Street south and north of Whitemud Drive
- 50 Street and Anthony Henday Interchange
- 41 Avenue SW east of Queen Elizabeth Highway



# 2026 Traffic Management Plan

## Project Overview

## 2026 Traffic Management Plan - Freeways/Expressways



### City Projects

- Anthony Henday Drive
  - 137 Avenue Ramps
  - Terwillegar Stage 3
  - Valley Line West LRT
  - Capital Line South LRT
- Whitemud Drive
  - Terwillegar Stage 2
- Yellowhead Trail
  - St. Albert Trail to 97 Street
  - Beverly Bridge
  - 17 Street NW Bridges

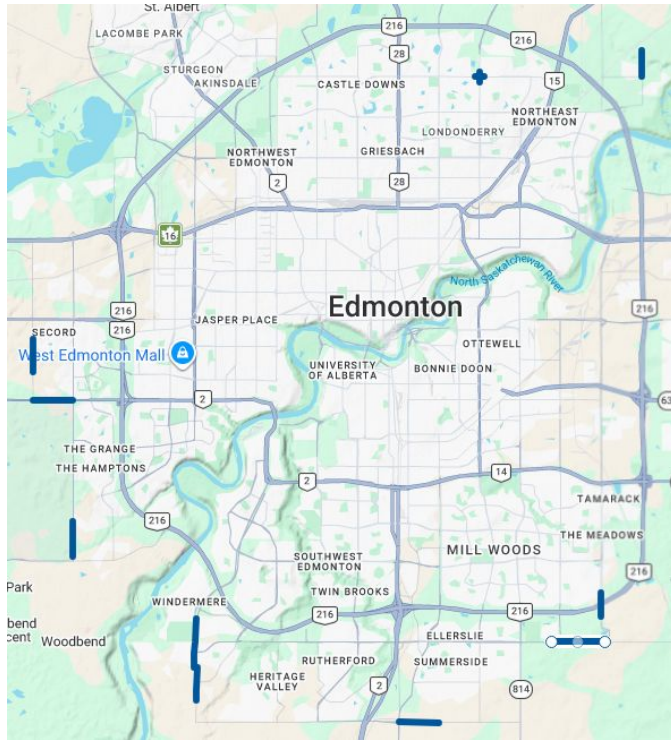
## 2026 Traffic Management Plan - Arterial Road Network



### City Projects

- Valley Line LRT West
  - 87 Avenue (Anthony Henday to 159 Street)
- Capital Line LRT South
  - 111 Street (Anthony Henday Drive to 23 Avenue)
- 95 Avenue (163-170 Street) Rehabilitation
- 34 Street Culvert (Fulton Creek) Replacement

## 2026 Traffic Management Plan - Arterial Road Network



### Developer Projects

- 231 Street (89 to 96 Avenue)
- 215 Street (Edgmont Green to Lessard Road)
- Whitemud Drive (215 to 231 Street)
- 167 Avenue / 66 Street Intersection
- Meridian Street (Marquis Boulevard to Horse Hills Drive)
- 17 Street (North/South of Anthony Henday Drive)
- Ellerslie Road (Charlesworth Way to 17 Street)
- 41 Avenue SW (Ewing Trail to 91 Street)
- 170 Street SW (Ambleside Way to 41 Avenue SW)

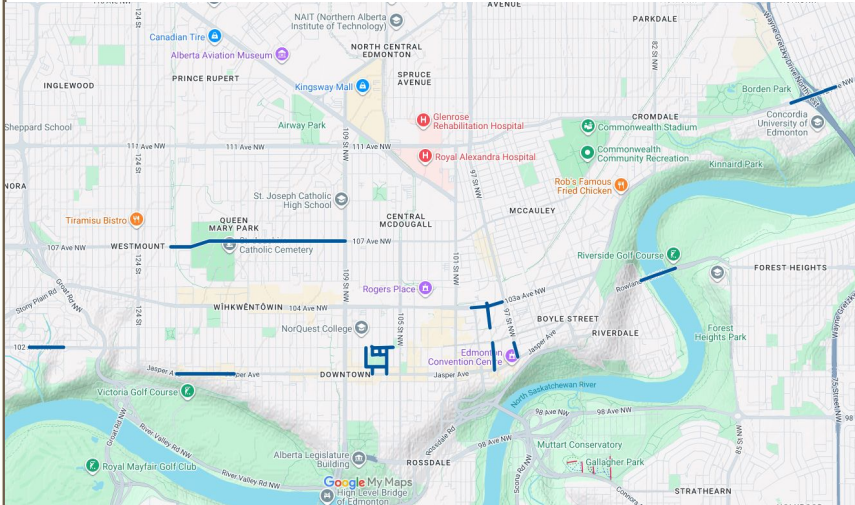
## 2026 Traffic Management Plan - Arterial Road Network



### Utility Projects

- EPCOR Water
  - ~37 Planned Projects
  - Duration 2 weeks - 6 months
  - Various Lane Restrictions
- EPCOR Power
  - ~34 Planned Projects
  - 2 weeks to 3 months
  - Lane Restrictions (as required)
- ATCO Gas
  - ~7 Planned Projects
  - 5 months to 12 months

# 2026 Traffic Management Plan - Downtown



## City Roadway Projects

- 102 Avenue (Valley Line LRT West)
- Imagine Jasper Avenue (Stage 2)
- 106 / 107 Street Streetscape
- 103A Avenue Pedway
- 99 Street / Judy Padua Way
- 107 Avenue Revitalization
- Chinatown Gate (97 Street)

## City Bridge Projects

- Wellington Bridge
- Dawson Bridge
- 112 Avenue over Wayne Gretzky Drive

# 2026 Construction Season Overview



## Ongoing & Carryforward Projects

Large multi-year projects (e.g. Valley Line West) remain primary inputs.

2026 focus is: “Finish what we Started” and “Limited **new** projects”



## Scheduling Adjustments

Low Level Bridge NB deferred to 2026/2027.

EPCOR work on 107 Avenue deferred to 2027.



## Q3 2026 Traffic Relief Anticipated

Completion of key projects in Fall 2026:

- ✓ Wellington Bridge
- ✓ 95 Avenue
- ✓ Terwillegar Stage 2

**Thank you.**

Questions?

Integrated Infrastructure Services

**Edmonton**