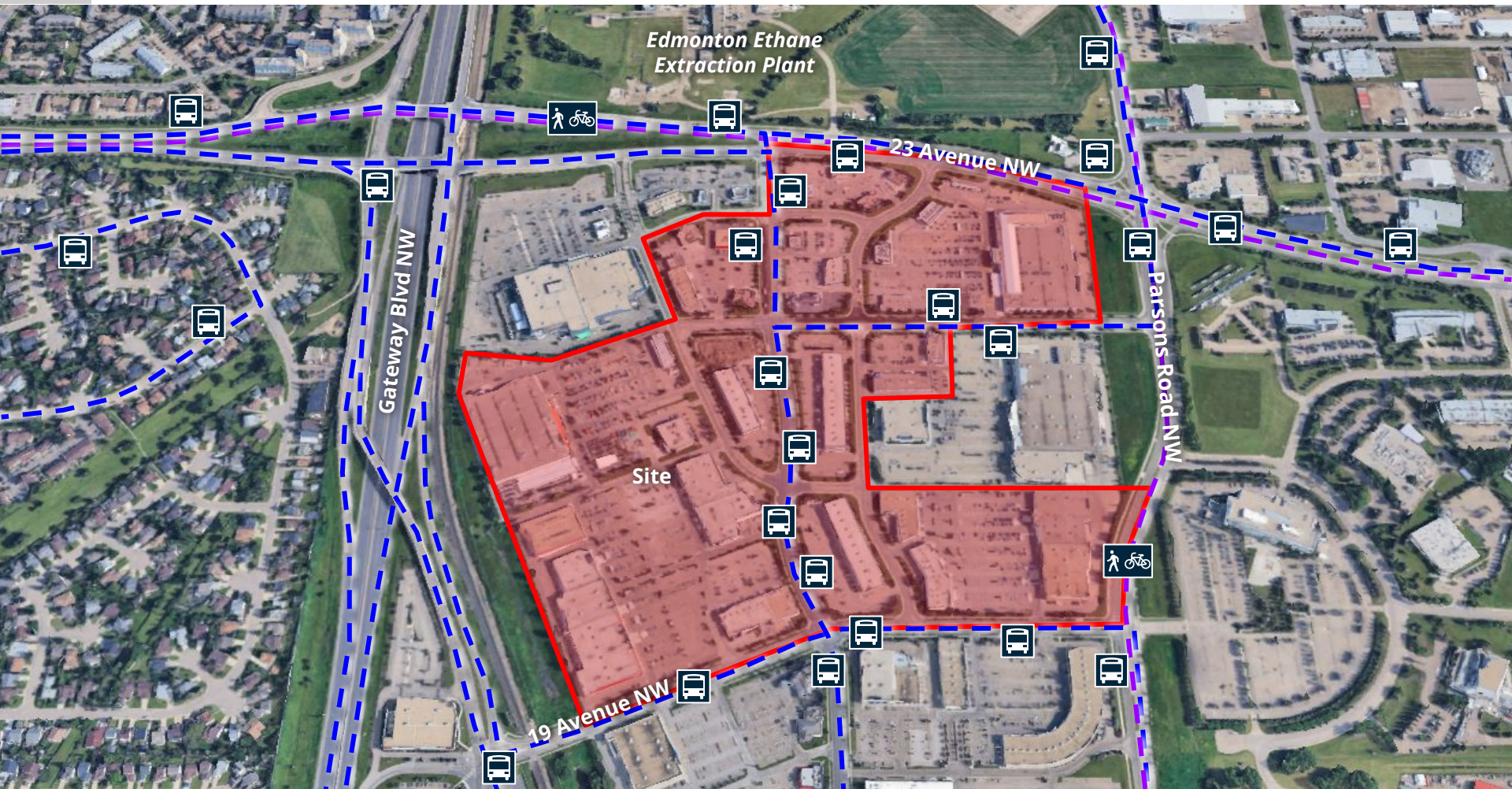


ITEM 3.11
BYLAW 21423
SOUTH EDMONTON COMMON

DEVELOPMENT
SERVICES
FEB 24, 2026



3 COMMUNITY INSIGHTS

Respondents (3)

Questions (3)

- Area of the application
- Proximity of the Edmonton Ethane Extraction Plant to the rezoning site



PRE-APPLICATION
Aug 27, 2025



CITY WEBPAGE
Nov 7, 2025



MAILED NOTICE
Nov 27, 2025



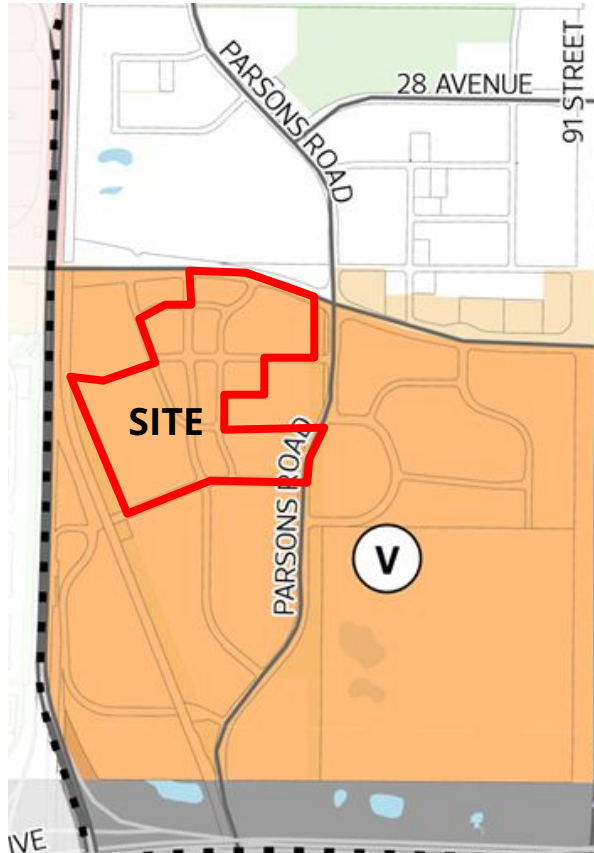
SITE SIGNAGE
Dec 12, 2025



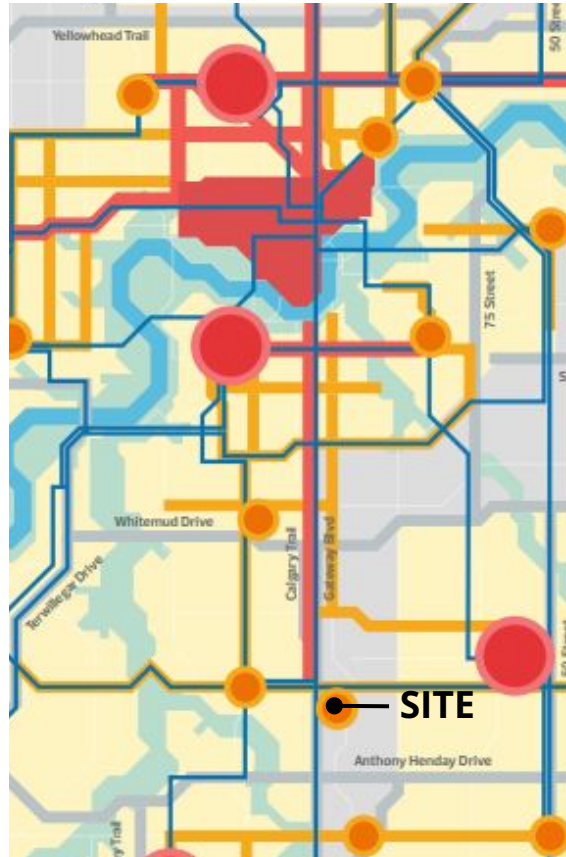
PUBLIC HEARING
NOTICE
Jan 29, 2026



JOURNAL AD
Feb 6 & 14, 2026



MILL WOODS AND MEADOWS
DISTRICT PLAN



THE CITY PLAN

THE CITY PLAN

- 1.2.2.3:
Enable accessible child care facilities in a variety of locations throughout the city.

