



Aerial Image captured Fall 2025

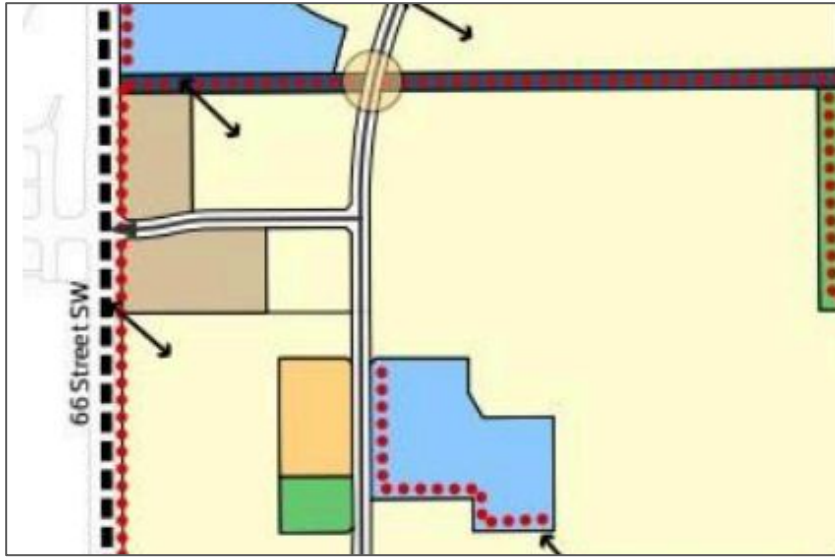
ITEMS 3.9 & 3.10
BYLAWS 21439 & 21440
MATTSON

DEVELOPMENT
SERVICES
MAR 10, 2026

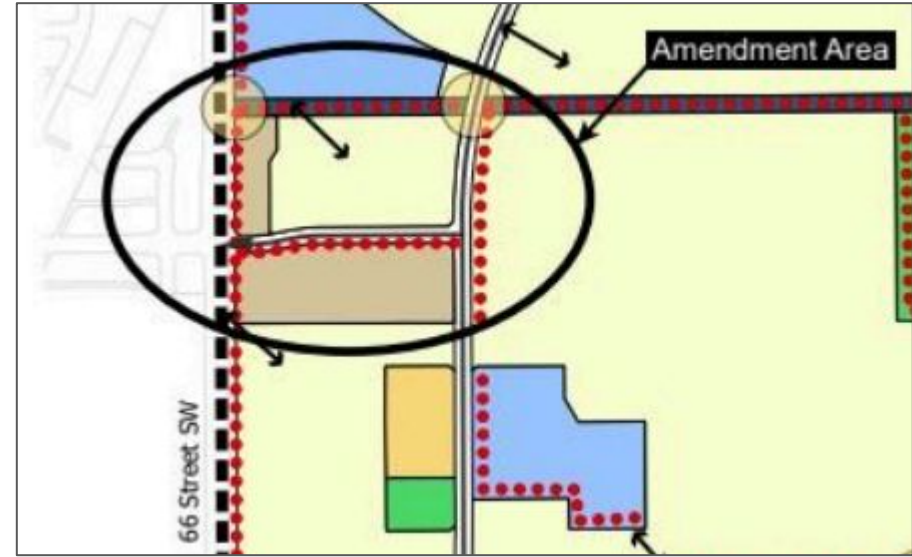




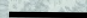
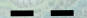


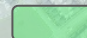

EXISTING NSP

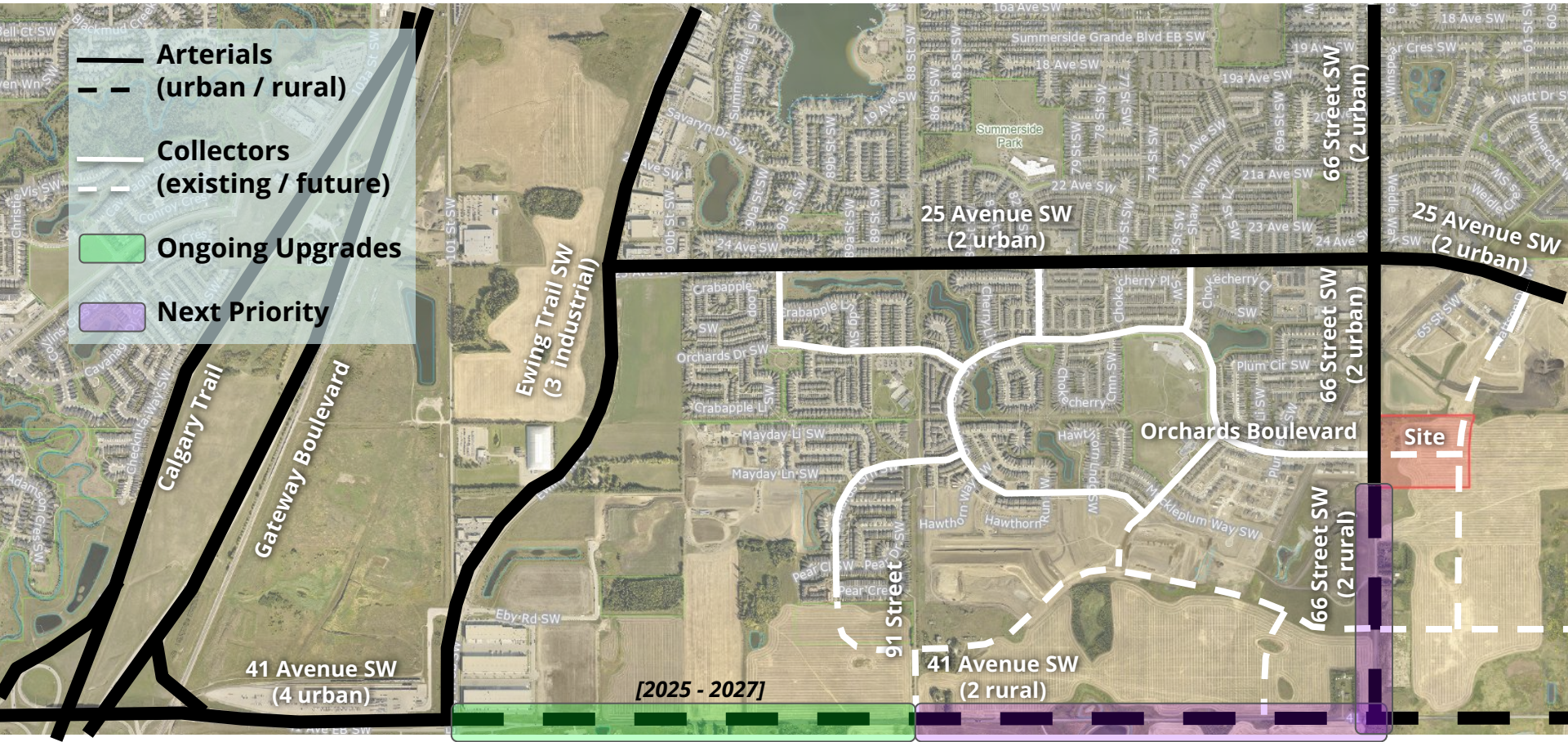


PROPOSED NSP AMENDMENT



 Single / Semi-Detached Residential	 Engineered Stormwater Management Facility	 Collector Roadway
 Row Housing / Medium Density Residential	 Environmental Reserve	 Active Modes Connection
 Low Rise / Medium Density Residential	 Pipeline Right-of-Way	 Walkways
 School / Park (Municipal Reserve)	 Greenway (Road R/W)	 Potential Wildlife Crossing Location
 Commercial	 Public Utility Lot	 Access/Emergency Access
 Naturalized Stormwater Management Facility	 Priority Pedestrian Crossings	 NSP Boundary

-  **Arterials**
-  **(urban / rural)**
-  **Collectors**
-  **(existing / future)**
-  **Ongoing Upgrades**
-  **Next Priority**





ADMINISTRATION'S RECOMMENDATION: **APPROVAL**