

The City of Edmonton

Bylaw 21447

Closure of Vehicular Access to Titled Parcels for Various City Locations

WHEREAS the Municipal Council of the City of Edmonton may pass a Bylaw pursuant to Section 28 of the *Highways Development and Protection Act*, S.A. 2004, c. H-8.5 for the purpose of removing any access to a controlled street; and

WHEREAS City Council has considered the proposed closure and has agreed that it is in the public interest to pass this Bylaw;

NOW THEREFORE the Municipal Council of the City of Edmonton, duly assembled, enacts as follows:

1. All means of access to or from a controlled street generally as illustrated on the attached Schedules “A1” to “A9”, are hereby closed.

READ a first time this _____ day of _____, A.D. 2026;

READ a second time this _____ day of _____, A.D. 2026;

READ a third time this _____ day of _____, A.D. 2026;

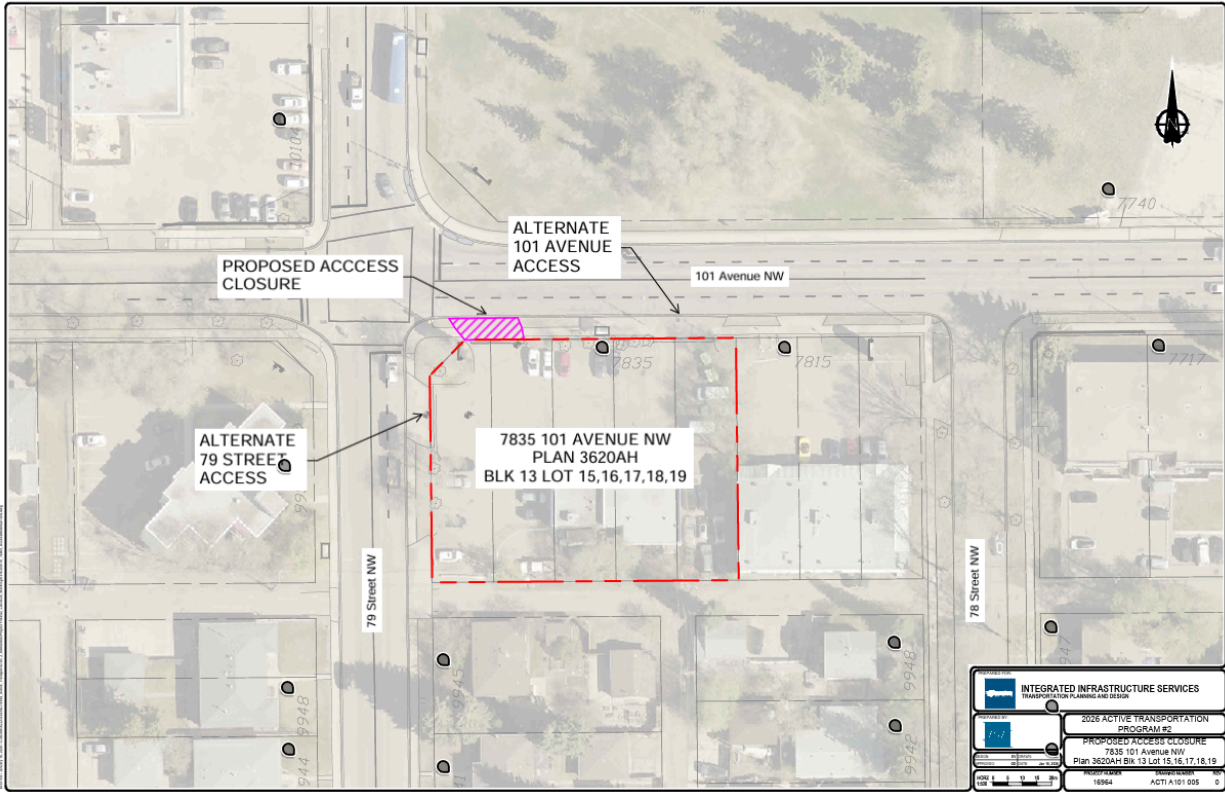
SIGNED and PASSED this _____ day of _____, A.D. 2026.

THE CITY OF EDMONTON

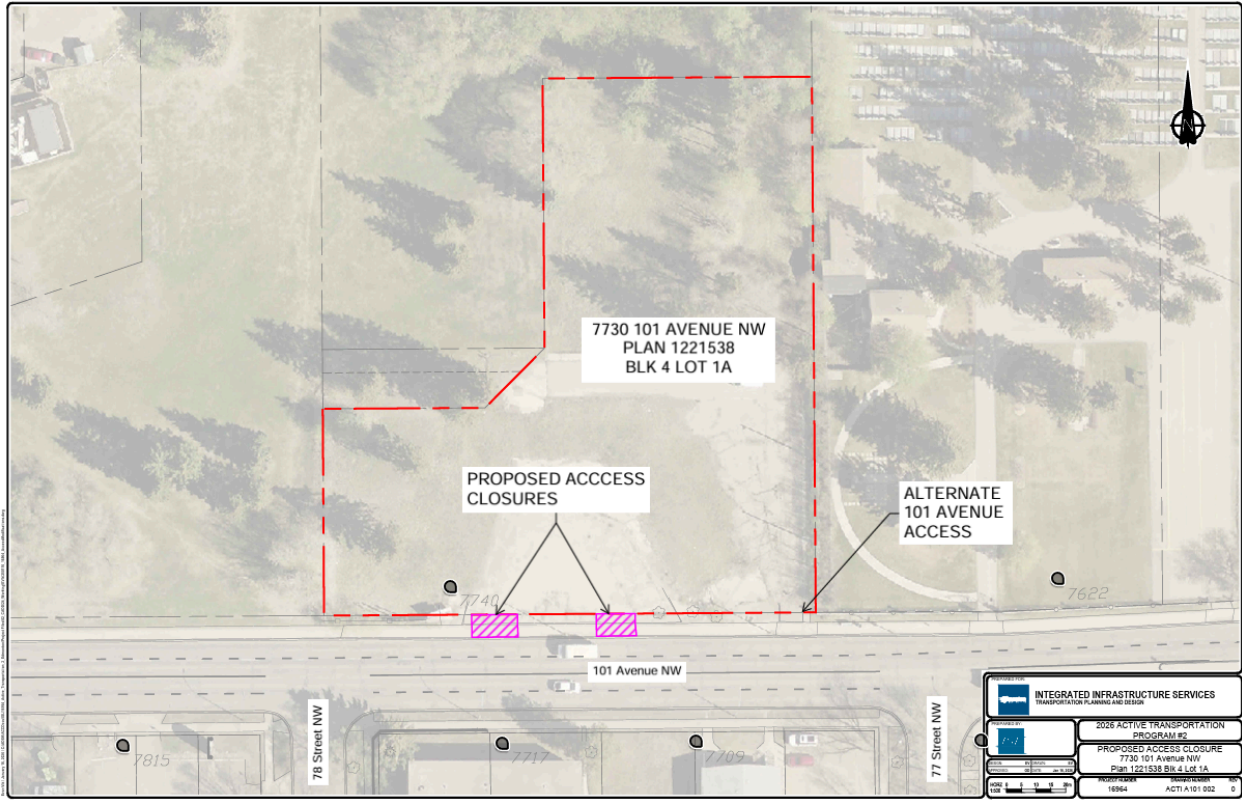
MAYOR

CITY CLERK

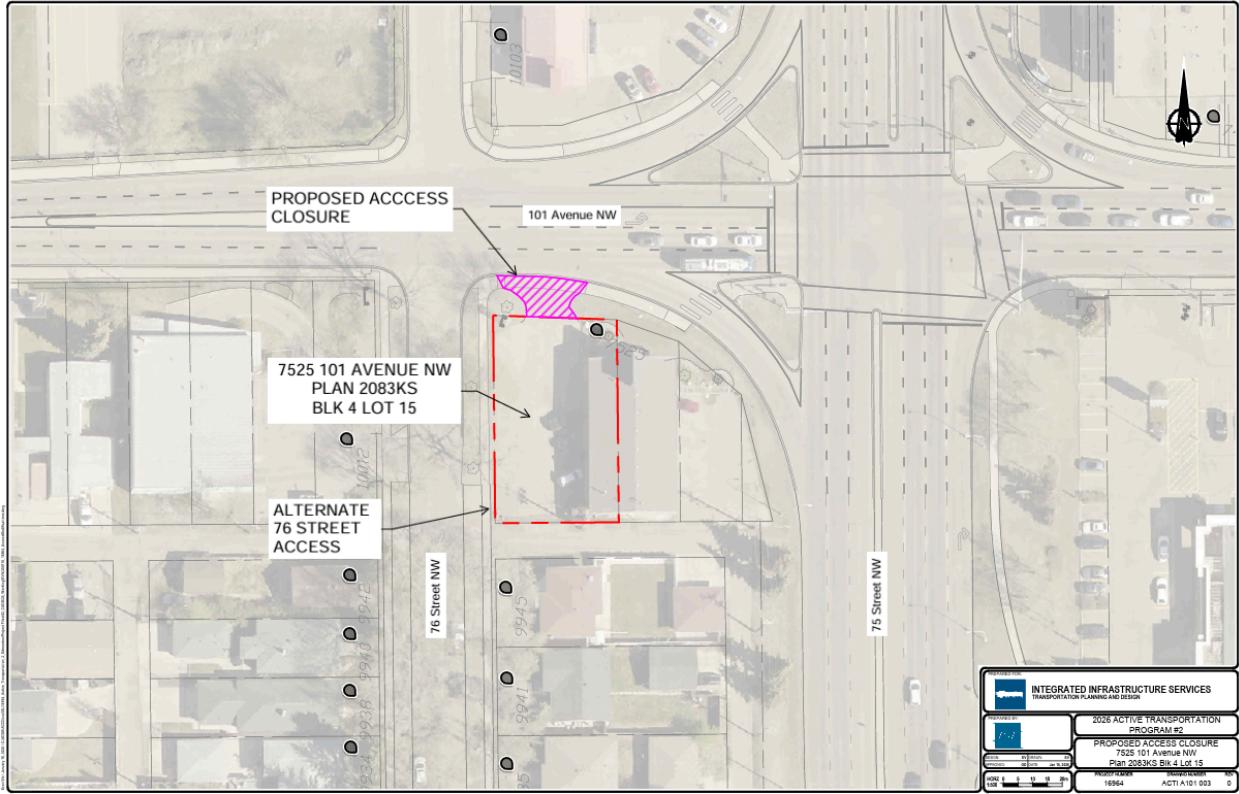
SCHEDULE "A1" TO BYLAW 21447



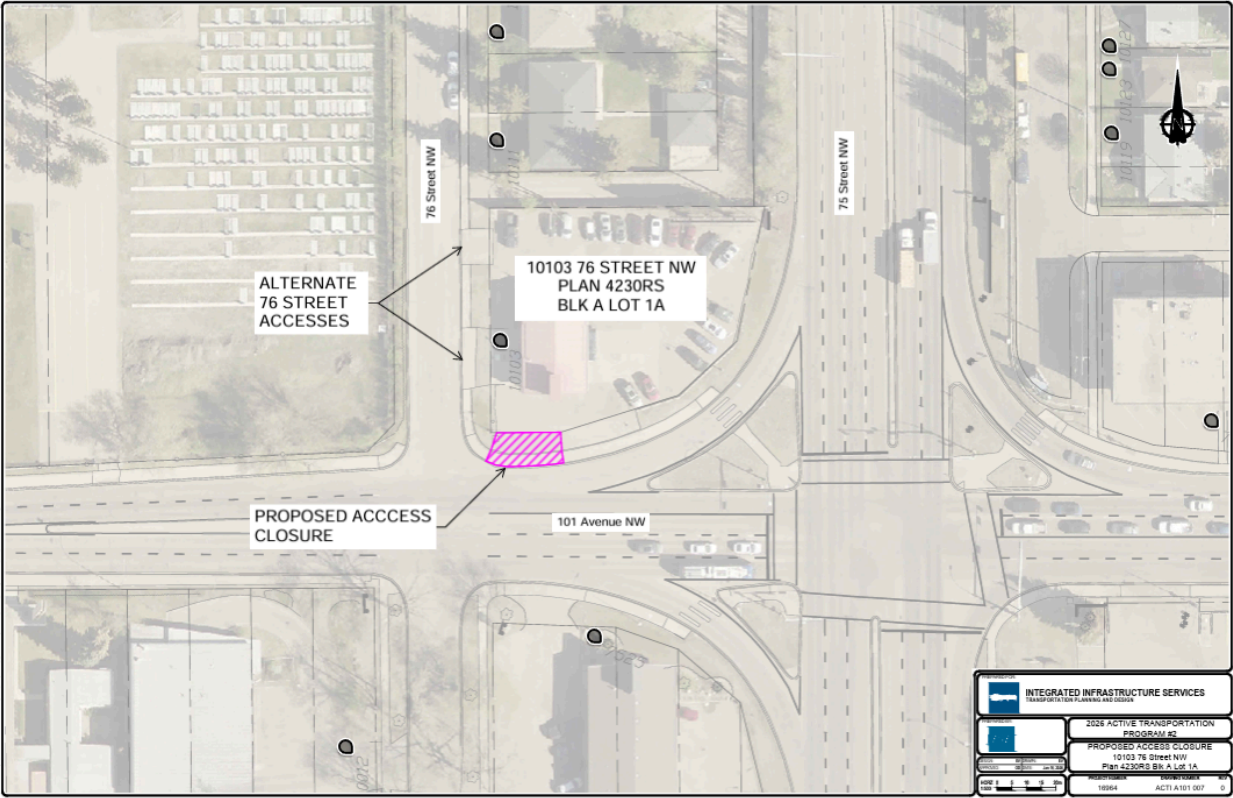
SCHEDULE "A2" TO BYLAW 21447



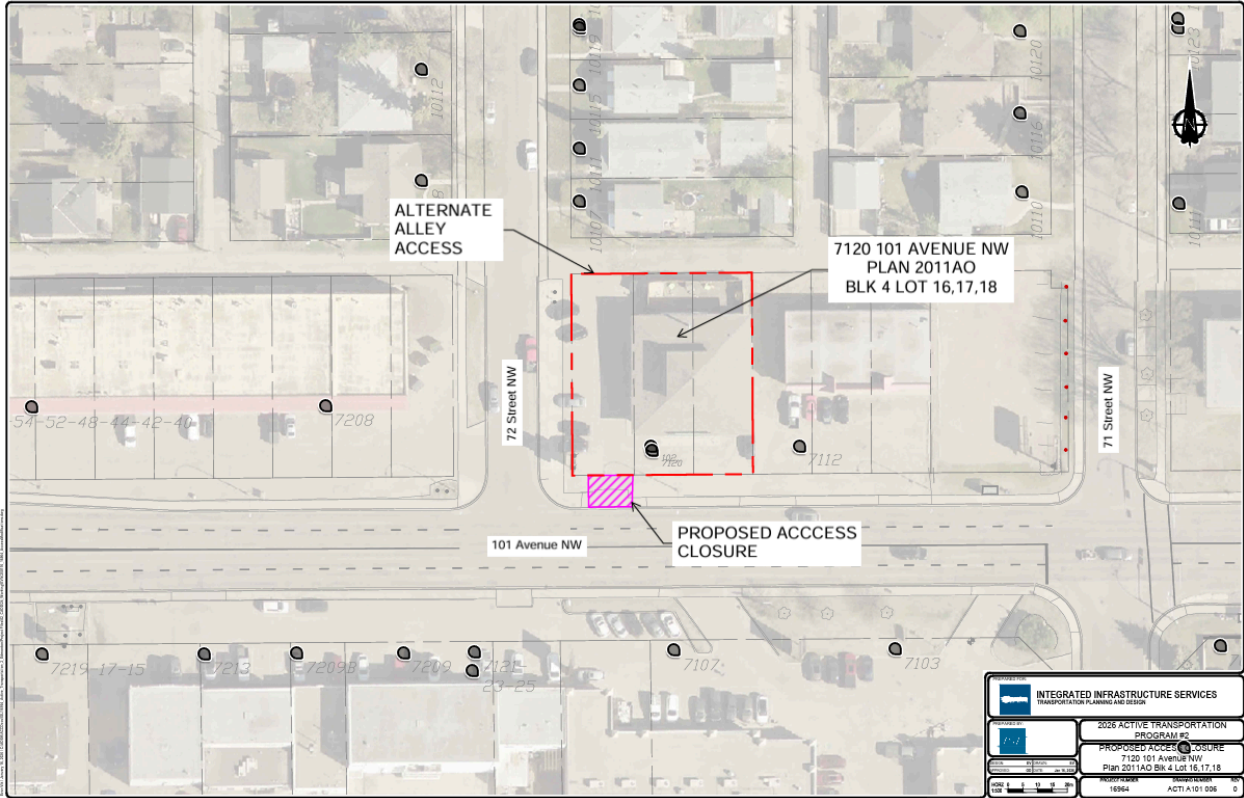
SCHEDULE "A3" TO BYLAW 21447



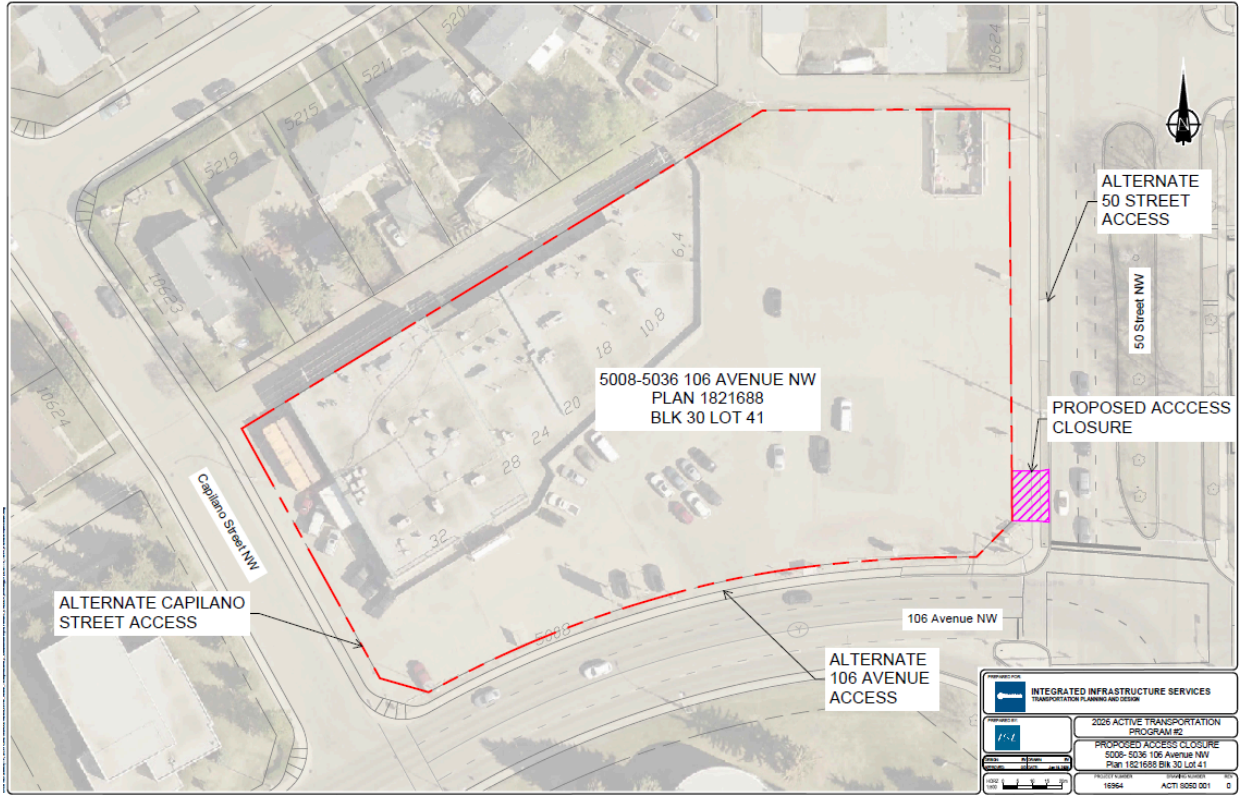
SCHEDULE "A4" TO BYLAW 21447



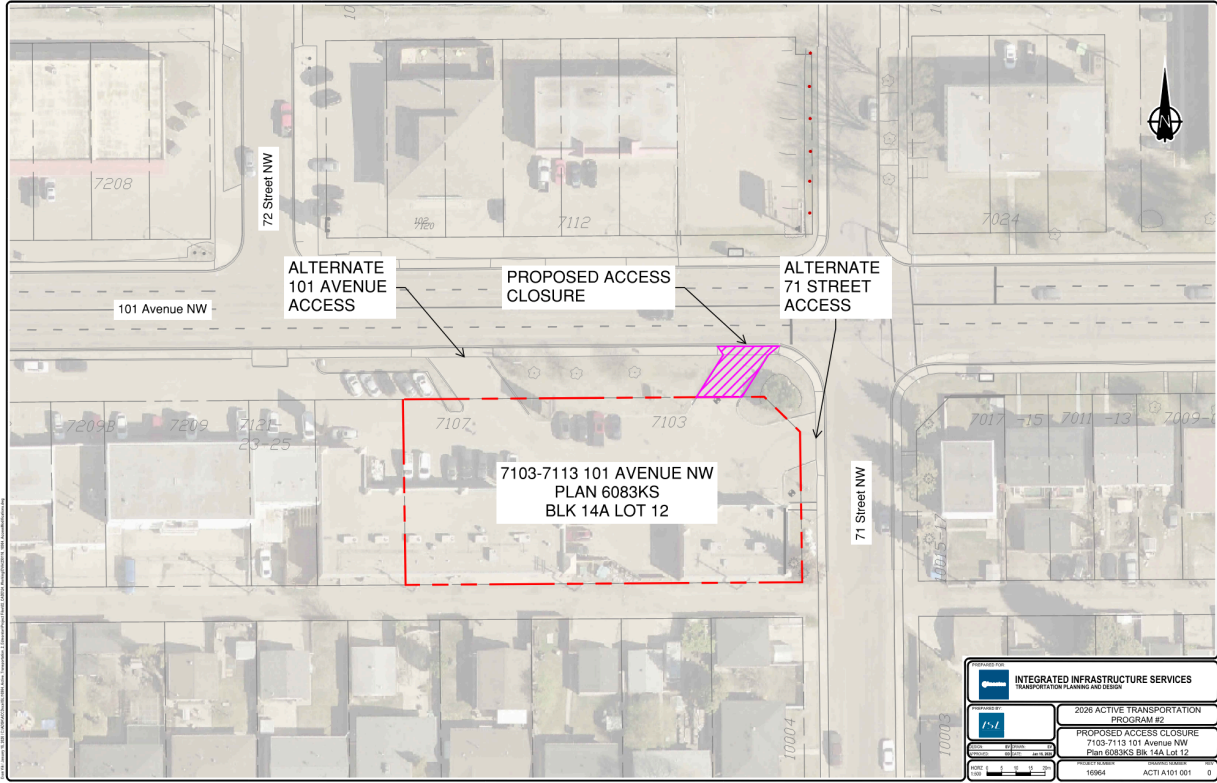
SCHEDULE "A5" TO BYLAW 21447



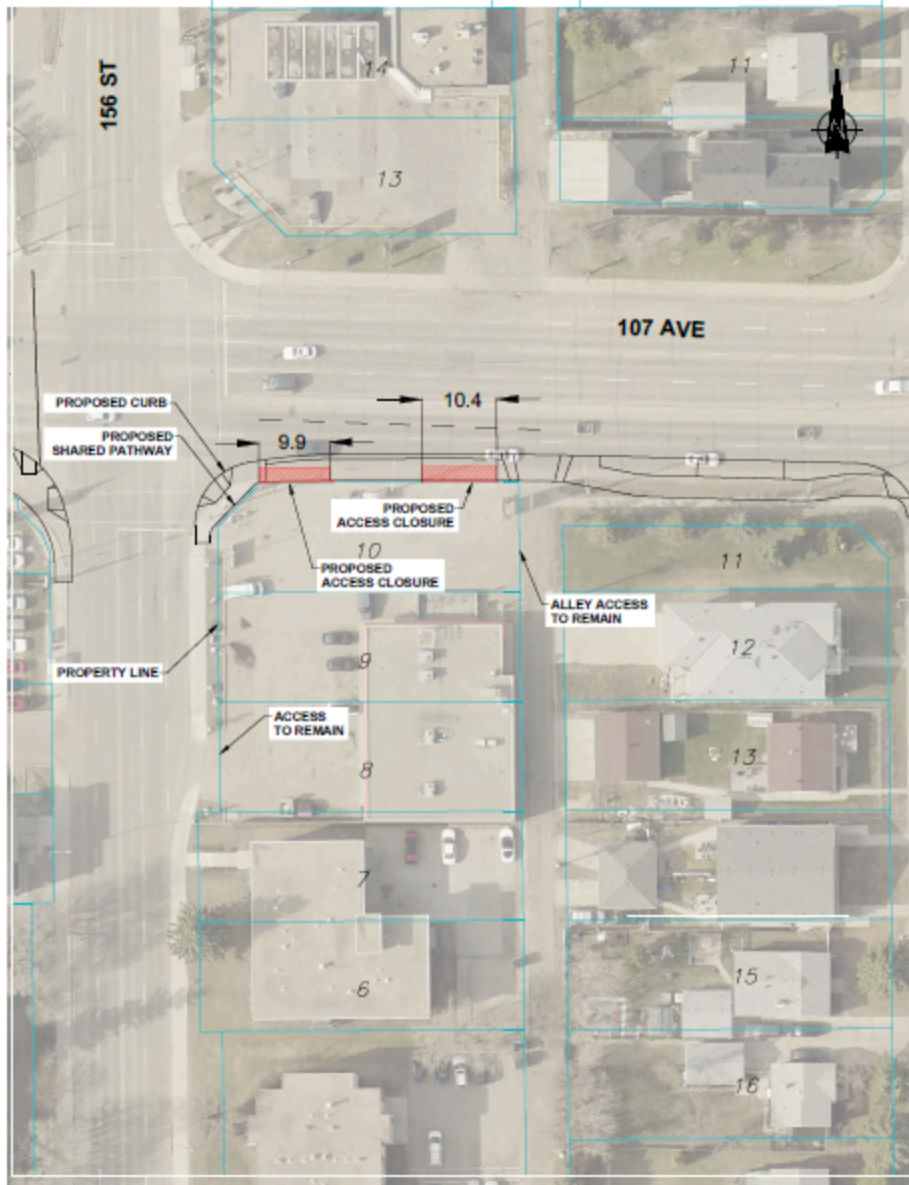
SCHEDULE "A6" TO BYLAW 21447




SCHEDULE "A8" TO BYLAW 21447





SCHEDULE "A9" TO BYLAW 21447



LEGEND

 PROPOSED ACCESS CLOSURE

NOTE:
ALL DIMENSIONS ARE APPROXIMATE AND
MUST BE VERIFIED BY LEGAL SURVEY.

<p>ACTIVE MODES - 107 AVENUE (163 STREET TO 127 STREET)</p>		
<p>ACCESS PLAN (10635-10639 156 STREET)</p>		
<p>DESIGNED BY TRANSPORTATION PLANNING AND DESIGN</p>	<p>SCALE 1:500</p>	
<p>APPROVED BY INTEGRATED INFRASTRUCTURE SERVICES</p>	<p>DATE 15/JAN/2020</p>	