

Charter Bylaw 21425

A Charter Bylaw to amend Charter Bylaw 24008,
being the Northwest District Plan

WHEREAS pursuant to the authority granted to it by the Municipal Government Act, as amended by the *City of Edmonton Charter, 2018 Regulation, AR 39/2018*, on October 2, 2024, the Municipal Council of the City of Edmonton passed Charter Bylaw 24008, being the Northwest District Plan; and

WHEREAS Council found it desirable from time to time to amend the Northwest District Plan; and

WHEREAS Council has amended the Northwest District Plan, through the passage of Charter Bylaws 21000, 21164, and 21417; and

WHEREAS an application was received by Administration to amend the Northwest District Plan;

NOW THEREFORE after due compliance with the relevant provisions of the Municipal Government Act, RSA 2000, c. M-26, as amended, and as amended by the City of Edmonton Charter, 2018 Regulation, AR 39/2018, the Municipal Council of the City of Edmonton duly assembled enacts as follows:

1. That Charter Bylaw 24008, being the Northwest District Plan, is hereby amended as follows:
 - a. Deleting a portion of “Map 3: Nodes and Corridors” as shown on Schedule “A” and replacing it with the equivalent portion of “Map 3: Nodes and Corridors” as shown on Schedule “B” and forming part of this Charter bylaw;
 - b. Deleting a portion of “Map 4: Land Use Concept to 1.25 Million” as shown on Schedule “C” and replacing it with the equivalent portion of “Map 4: Land Use

Concept to 1.25 Million” as shown on Schedule “D” and forming part of this Charter bylaw;

- c. Deleting a portion of “Map 5: Open Space and Natural Areas to 1.25 Million” as shown on Schedule “E” and replacing it with the equivalent portion of “Map 5: Open Space and Natural Areas to 1.25 Million” as shown on Schedule “F” and forming part of this Charter bylaw;
- d. Deleting a portion of “Map 6: Active Transportation to 1.25 Million” as shown on Schedule “G” and replacing it with the equivalent portion of “Map 6: Active Transportation to 1.25 Million” as shown on Schedule “H” and forming part of this Charter bylaw; and
- e. Deleting a portion of “Map 7: Transit to 1.25 Million” as shown on Schedule “I” and replacing it with the equivalent portion of “Map 7: Transit to 1.25 Million” as shown on Schedule “J” and forming part of this Charter bylaw.

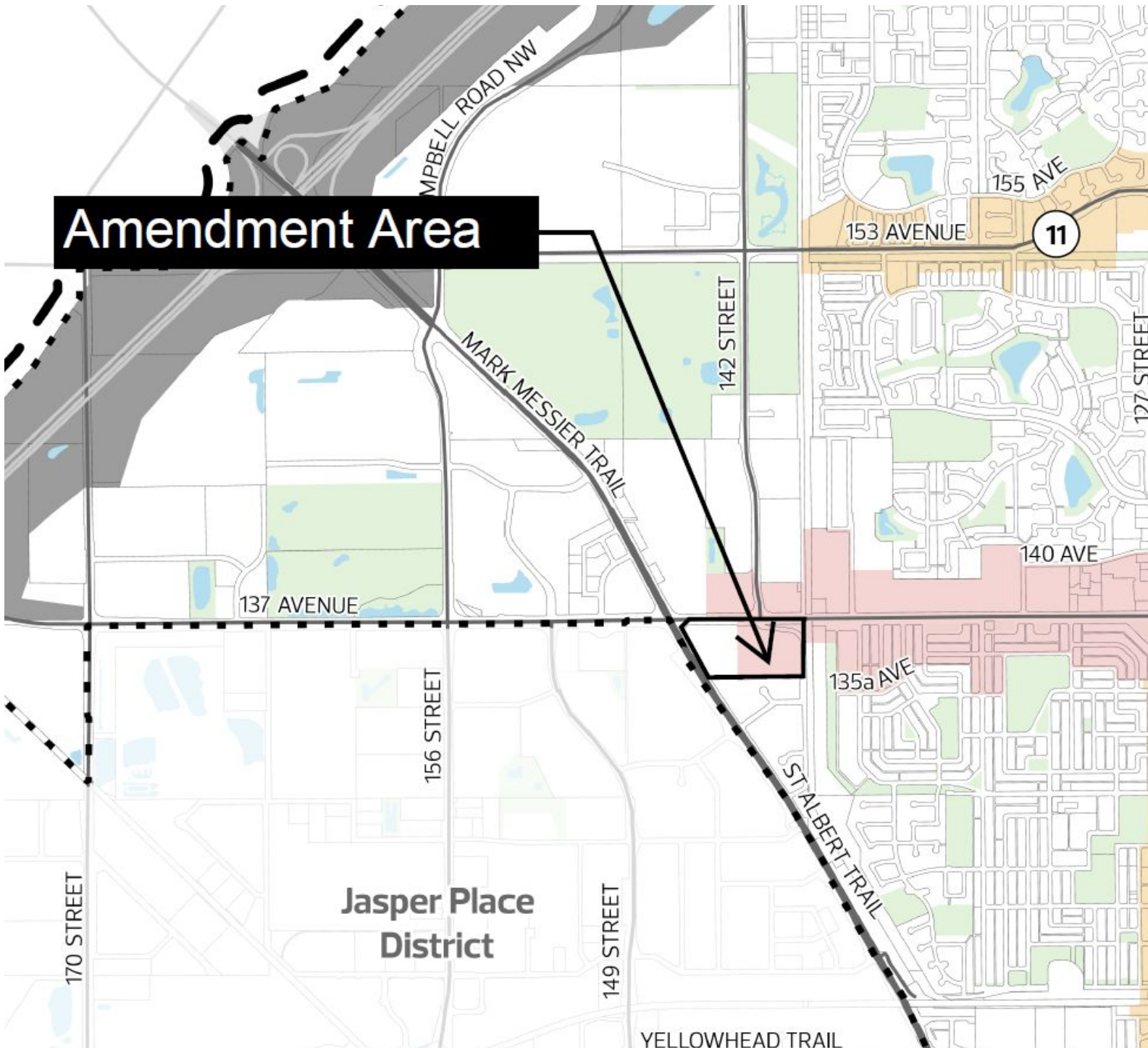
READ a first time this	day of	, A. D. 2026;
READ a second time this	day of	, A. D. 2026;
READ a third time this	day of	, A. D. 2026;
SIGNED and PASSED this	day of	, A. D. 2026.

THE CITY OF EDMONTON

MAYOR

CITY CLERK

Map 3: Nodes and Corridors



- General Information**
- Municipal Boundary
 - Adjacent Jurisdiction Boundary
 - District Plan Boundary
 - Transportation/Utility Corridor
 - Arterial Roadway
 - Freeway/Expressway/Highway
 - Waterbody
 - North Saskatchewan River Valley and Ravine System
 - Open Area
- Transit**
- Mass Transit Station - Current
 - Mass Transit Station - Planned
- Nodes and Corridors**
- Centre City
 - Major Node
 - District Node
 - Castle Downs
 - Northgate-Norhtown
 - Primary Corridor
 - 137 Avenue
 - 97 Street
 - Secondary Corridor
 - 97 Street
 - 153 Avenue
 - 127 Street
 - 82 Street

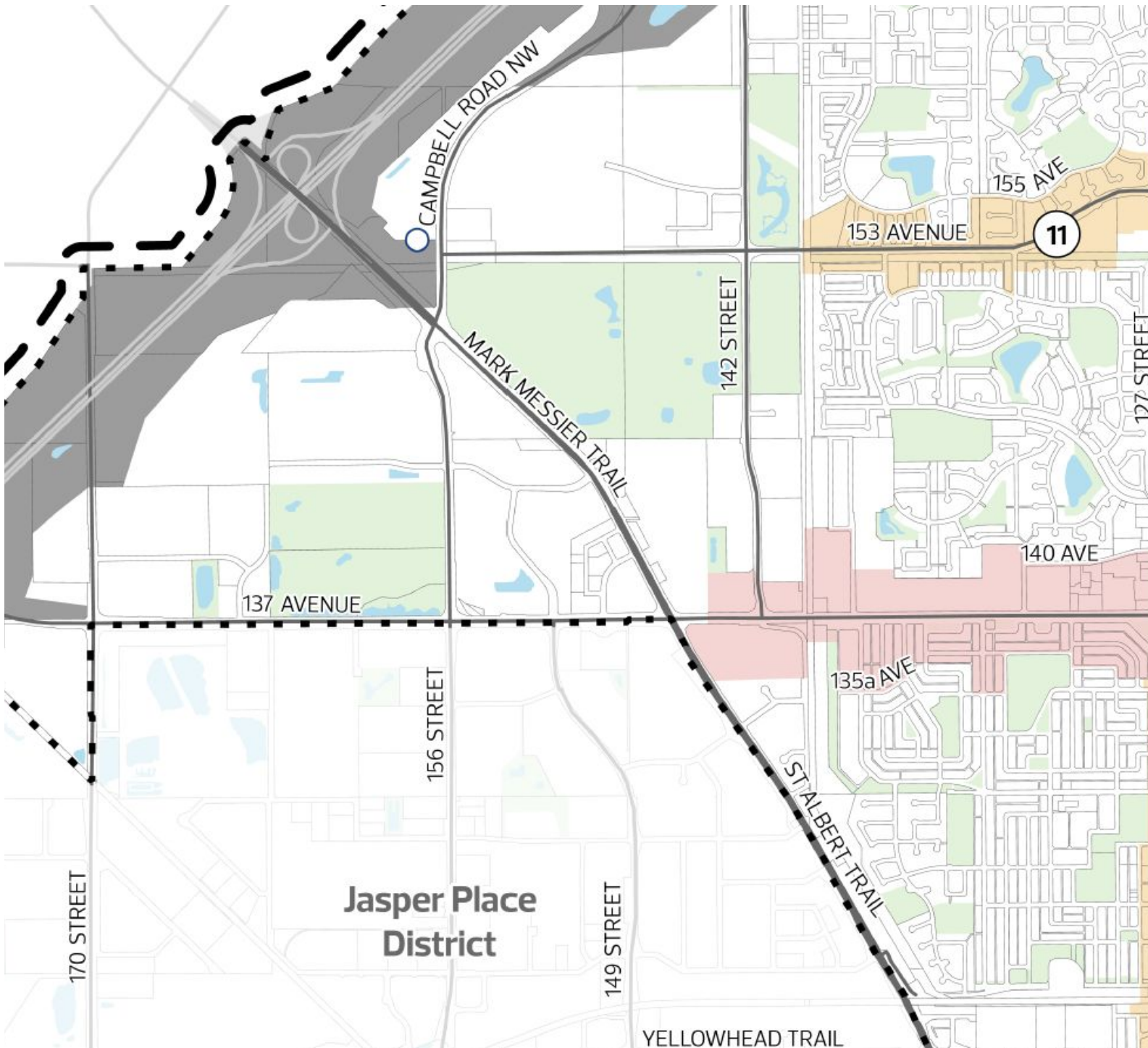
Letter/number labels as per The City Plan

Note that some roadway alignments are conceptual. Refer to additional Plans in Effect, where applicable, for details.

Parcel mapping may not exist exactly as illustrated and is subject to revision during subdivision and rezoning.

0 0.5 1 Km Scale: 1:58,000
Data Updated: 2024 03 01

Map 3: Nodes and Corridors



- General Information**
- Municipal Boundary
 - Adjacent Jurisdiction Boundary
 - District Plan Boundary
 - Transportation/Utility Corridor
 - Arterial Roadway
 - Freeway/Expressway/Highway
 - Waterbody
 - North Saskatchewan River Valley and Ravine System
 - Open Area
- Transit**
- Mass Transit Station - Current
 - Mass Transit Station - Planned
- Nodes and Corridors**
- Centre City
 - Major Node
 - District Node
 - Castle Downs
 - Northgate-Norhtown
 - Primary Corridor
 - 137 Avenue
 - 97 Street
 - Secondary Corridor
 - 97 Street
 - 153 Avenue
 - 127 Street
 - 82 Street

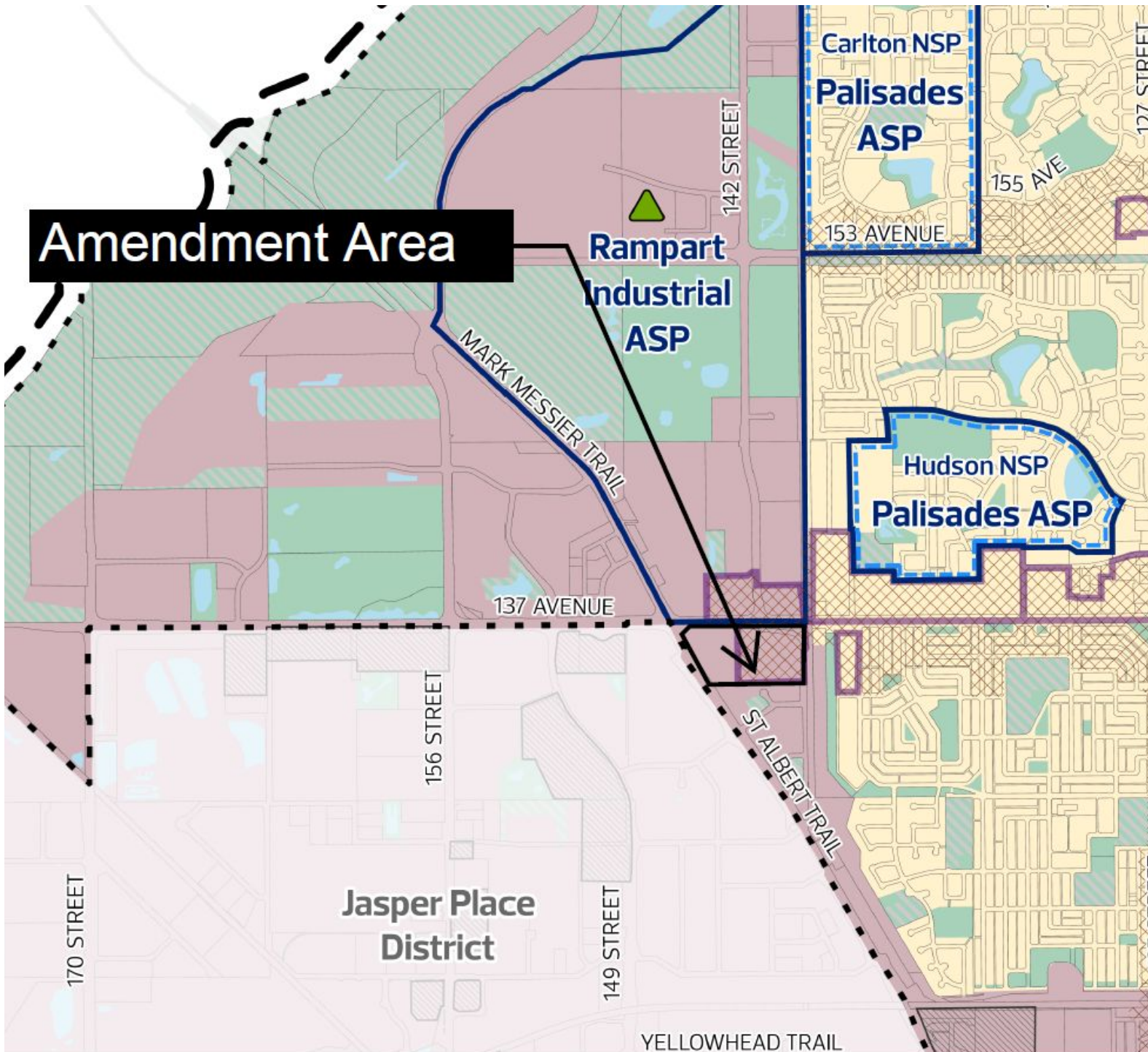
Letter/number labels as per The City Plan

Note that some roadway alignments are conceptual. Refer to additional Plans in Effect, where applicable, for details.

Parcel mapping may not exist exactly as illustrated and is subject to revision during subdivision and rezoning.

0 0.5 1 Km Scale: 1:58,000
Data Updated: 2024 03 01

Map 4: Land Use Concept to 1.25 Million



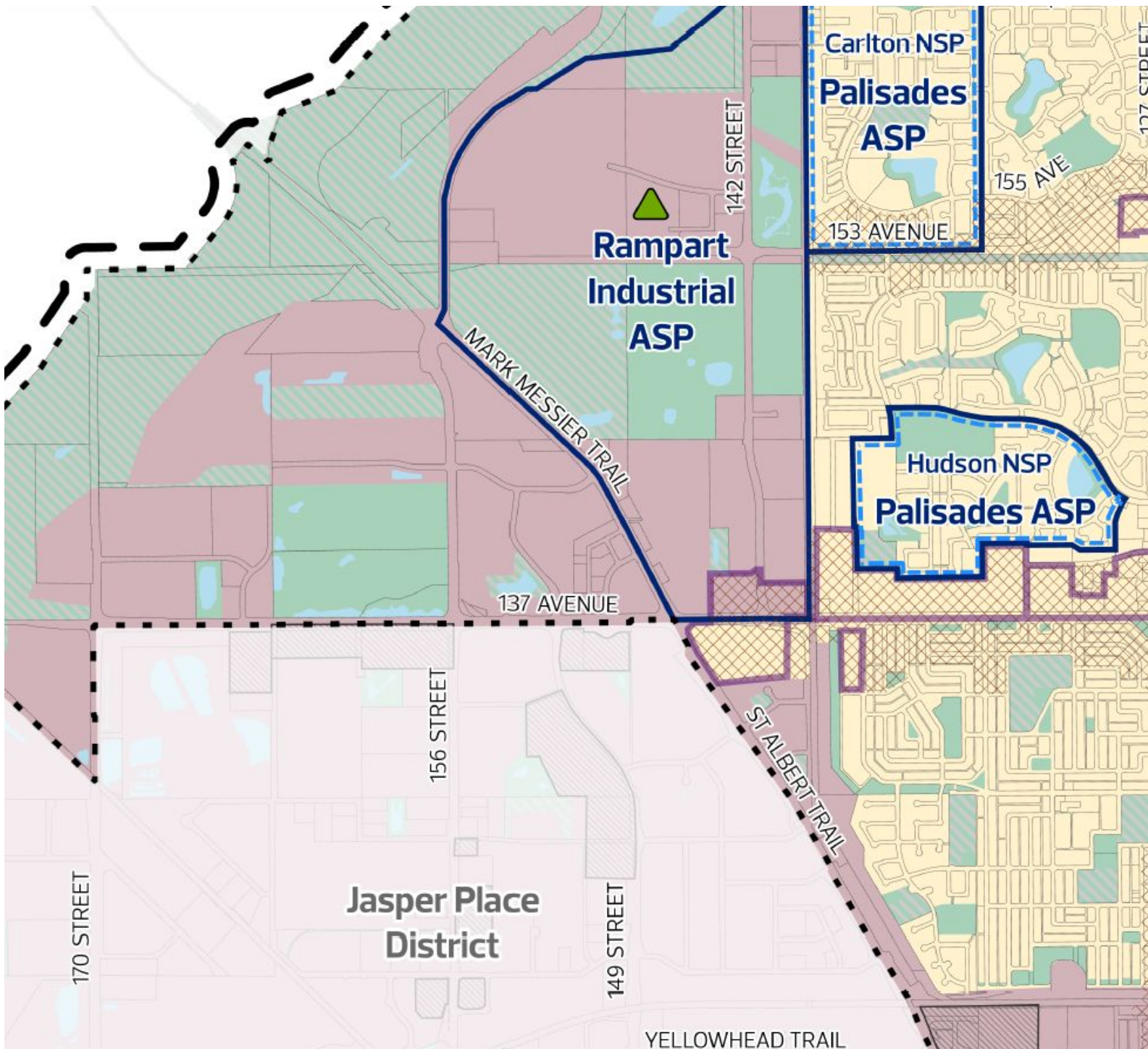
Amendment Area

- General Information**
- Municipal Boundary
 - Adjacent Jurisdiction Boundary
 - District Plan Boundary
 - Plan in Effect - Area Structure Plan/Area Redevelopment Plan*
 - Plan in Effect - Other*
- General Land Use**
- Urban Mix
 - Commercial/Industrial Employment
 - Institutional Employment
 - Future Non-Residential Area
 - Open Space - Current
 - Urban Service
 - Agriculture
 - Waterbody
 - North Saskatchewan River Valley and Ravine System
- Planned Municipal Park****
- Small (<3 ha)
 - Medium (3 ha - 10 ha)
 - Large (>10 ha)
- Development Areas**
- Node or Corridor Area
 - Non-Residential Intensification Area
- Design Influences**
- Large Site
 - Commercial Frontage
- Amendment Area**

*Plan in Effect boundaries on this map are conceptual. Consult the Plan in Effect for details.
 **Small Planned Municipal Park not shown for areas with Area Structure Plans in effect.

Parcel mapping may not exist exactly as illustrated and is subject to revision during subdivision and rezoning.
 Scale: 1:58,000
 Data Updated: 2023 12 31

Map 4: Land Use Concept to 1.25 Million

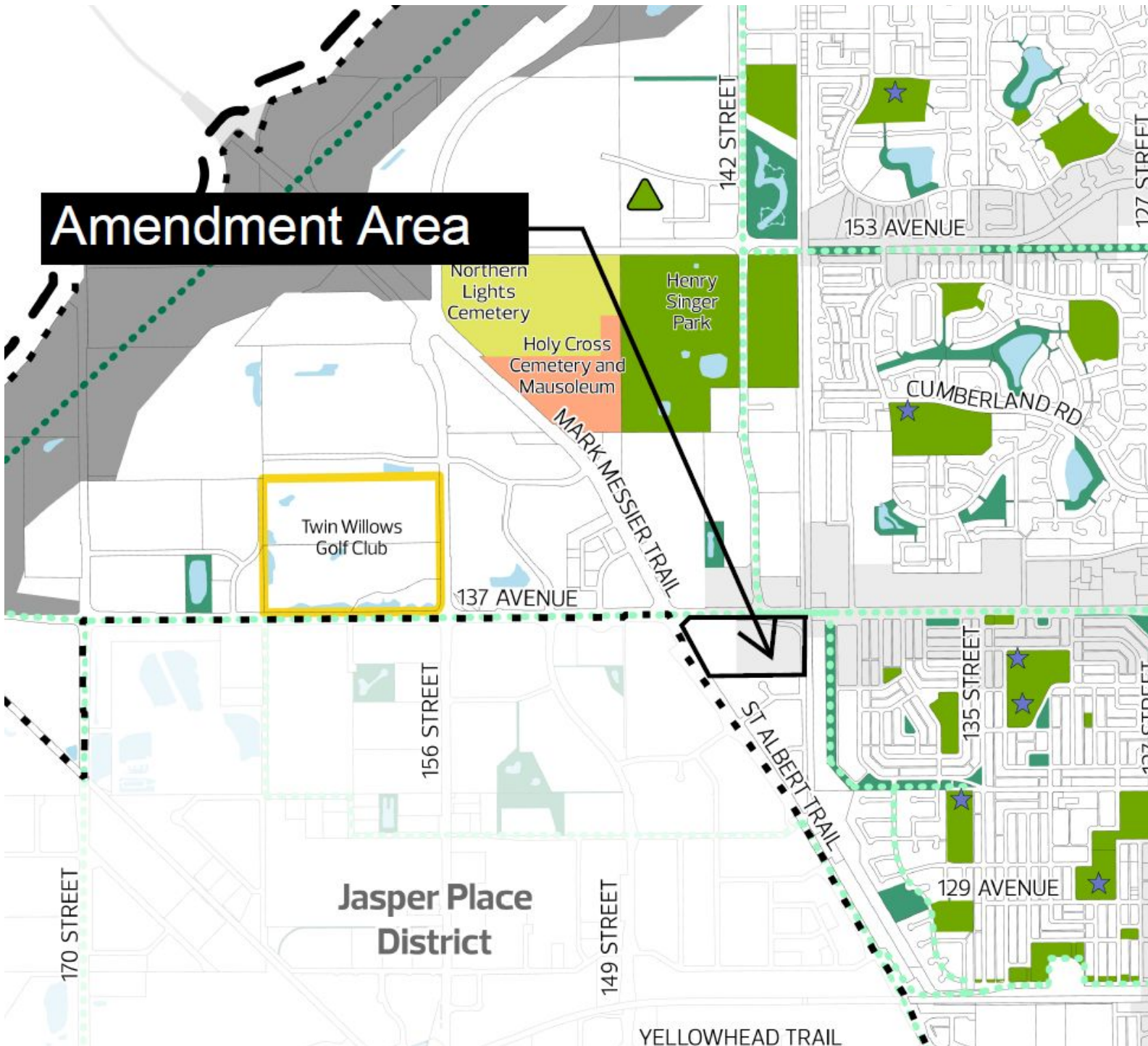


- General Information**
- Municipal Boundary
 - Adjacent Jurisdiction Boundary
 - District Plan Boundary
 - Plan in Effect - Area Structure Plan/Area Redevelopment Plan*
 - Plan in Effect - Other*
- General Land Use**
- Urban Mix
 - Commercial/Industrial Employment
 - Institutional Employment
 - Future Non-Residential Area
 - Open Space - Current
 - Urban Service
 - Agriculture
 - Waterbody
 - North Saskatchewan River Valley and Ravine System
- Planned Municipal Park****
- Small (<3 ha)
 - Medium (3 ha - 10 ha)
 - Large (>10 ha)
- Development Areas**
- Node or Corridor Area
 - Non-Residential Intensification Area
- Design Influences**
- Large Site
 - Commercial Frontage

*Plan in Effect boundaries on this map are conceptual. Consult the Plan in Effect for details.
 **Small Planned Municipal Park not shown for areas with Area Structure Plans in effect.

Parcel mapping may not exist exactly as illustrated and is subject to revision during subdivision and rezoning.
 Scale: 1:58,000
 Data Updated: 2023 12 31

Map 5: Open Space and Natural Areas to 1.25 Million



General Information

- Municipal Boundary
- Adjacent Jurisdiction Boundary
- District Plan Boundary
- Node or Corridor Area
- Transportation/Utility Corridor*

Open Space Connectors and Features

- River Valley Viewpoint - Current
- River Valley Viewpoint - Planned
- River Valley Trail Access
- Waterbody
- North Saskatchewan River Valley and Ravine System
- Habitat Greenway
- Urban Greenway
- Major Ecological Connection

Municipal Open Space

- Park - Current**
- Open Space - Supplementary**
- Municipal Golf Course
- Municipal Cemetery

Planned Municipal Park***

- Small (<3 ha)
- Medium (3 ha - 10 ha)
- Large (>10 ha)

Community Assets

- Recreation Centre
- School

Non-Municipal Open Space

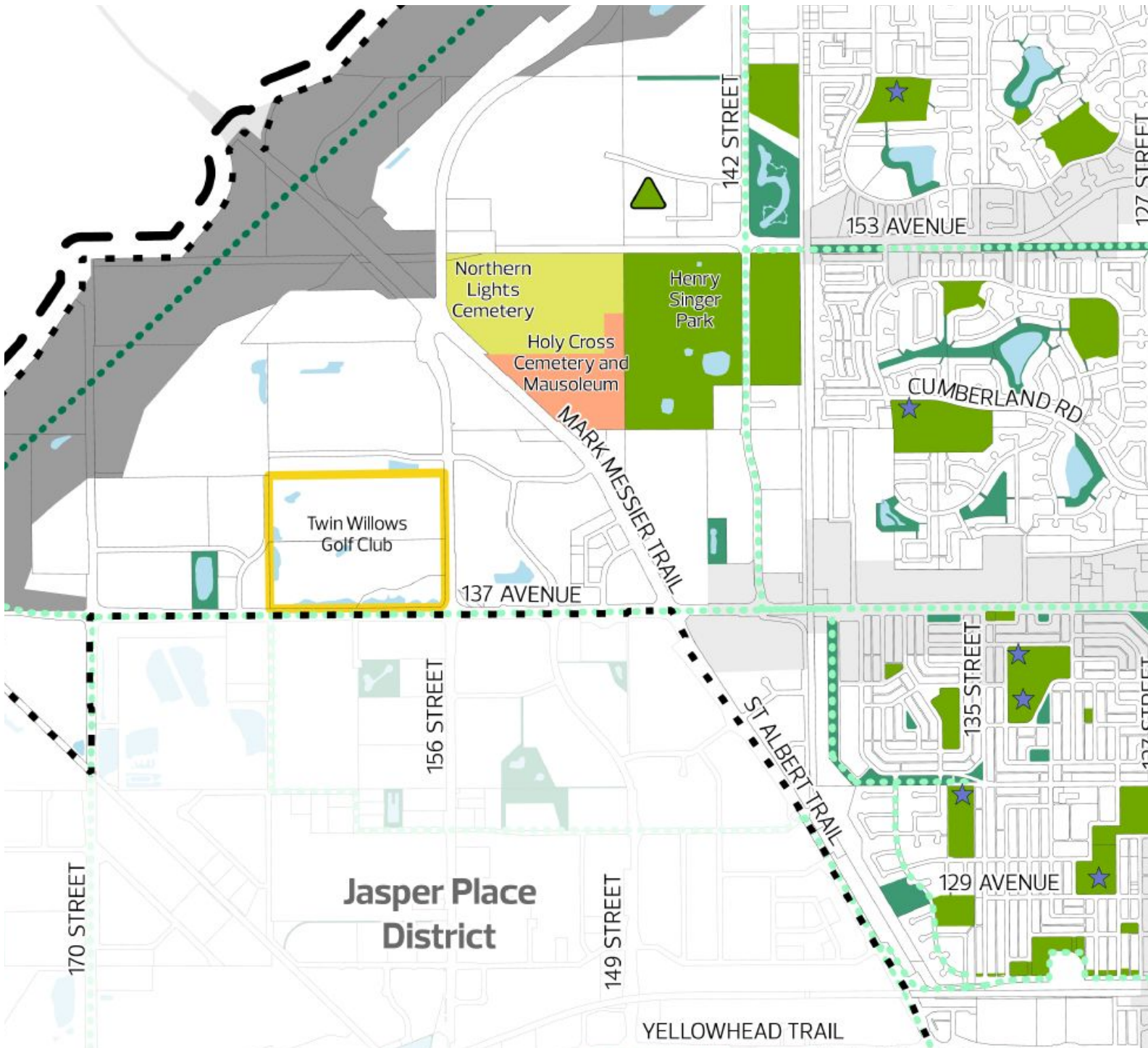
- Open Space - Other
- Provincial Park/Protected Area
- Private Golf Course
- Private Cemetery

Other Open Spaces

- Special Purpose Facility

*Transportation/Utility Corridor is not comprehensive and for illustrative purposes only.
 **Park - Current and Open Space - Supplementary may include Urban Service uses.
 ***Planned Municipal Park locations are conceptual. Refer to the Plan in Effect or other applicable plans for details. Small Planned Municipal Park not shown for areas with Area Structure Plans in effect.
 Parcel mapping may not exist exactly as illustrated and is subject to revision during subdivision and rezoning.
 Scale: 1:58,000
 Data Updated: 2024 03 01

Map 5: Open Space and Natural Areas to 1.25 Million



General Information

- Municipal Boundary
- Adjacent Jurisdiction Boundary
- District Plan Boundary
- Node or Corridor Area
- Transportation/Utility Corridor*

Open Space Connectors and Features

- River Valley Viewpoint - Current
- River Valley Viewpoint - Planned
- River Valley Trail Access
- Waterbody
- North Saskatchewan River Valley and Ravine System
- Habitat Greenway
- Urban Greenway
- Major Ecological Connection

Municipal Open Space

- Park - Current**
- Open Space - Supplementary**
- Municipal Golf Course
- Municipal Cemetery

Planned Municipal Park***

- Small (<3 ha)
- Medium (3 ha - 10 ha)
- Large (>10 ha)

Community Assets

- Recreation Centre
- School

Non-Municipal Open Space

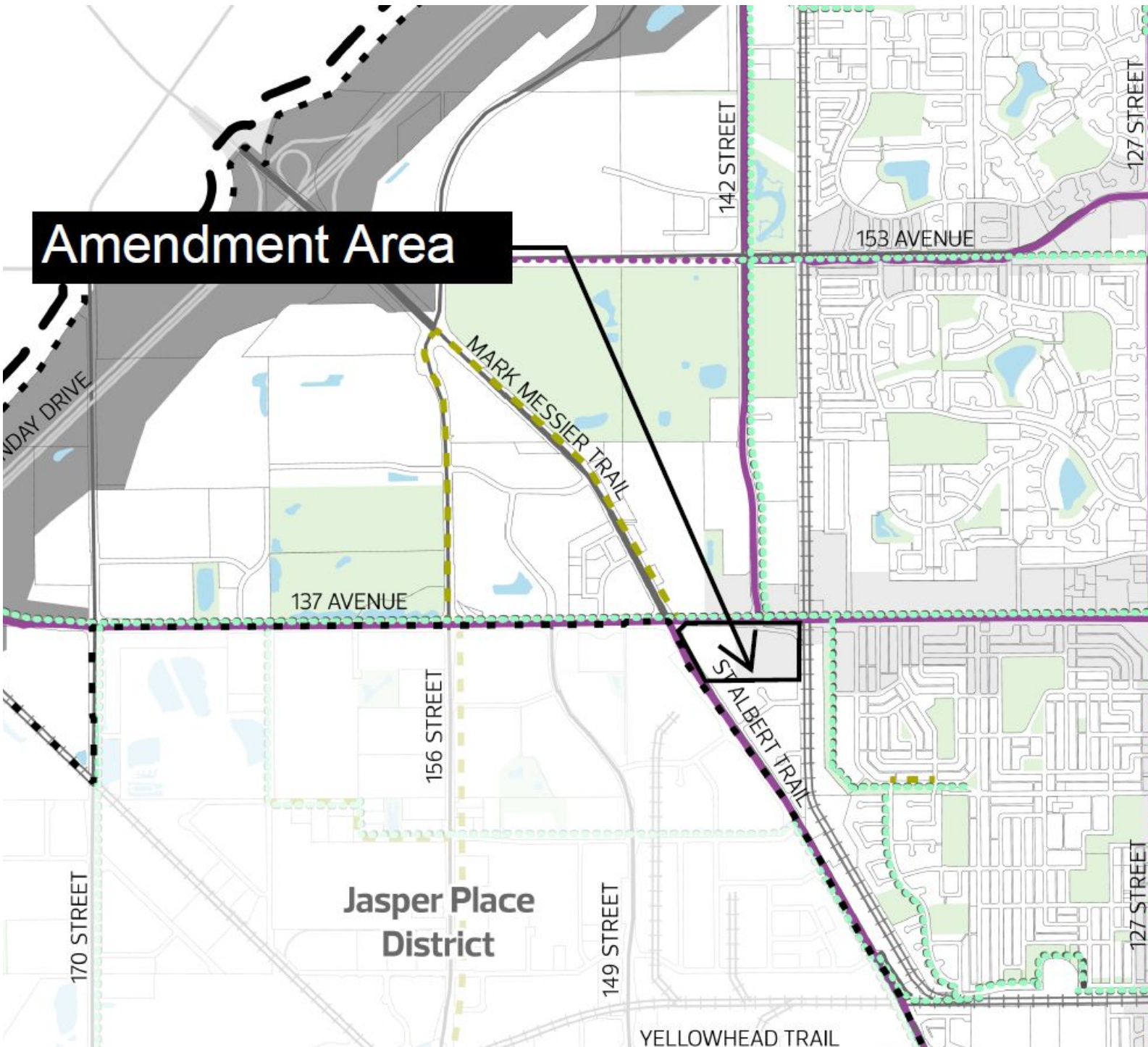
- Open Space - Other
- Provincial Park/Protected Area
- Private Golf Course
- Private Cemetery

Other Open Spaces

- Special Purpose Facility

*Transportation/Utility Corridor is not comprehensive and for illustrative purposes only.
 **Park - Current and Open Space - Supplementary may include Urban Service uses.
 ***Planned Municipal Park locations are conceptual. Refer to the Plan in Effect or other applicable plans for details. Small Planned Municipal Park not shown for areas with Area Structure Plans in effect.
 Parcel mapping may not exist exactly as illustrated and is subject to revision during subdivision and rezoning.
 Scale: 1:58,000
 Data Updated: 2024 03 01

Map 6: Active Transportation to 1.25 Million



General Information

- Municipal Boundary
- Adjacent Jurisdiction Boundary
- District Plan Boundary
- Node or Corridor Area
- Arterial Roadway
- Freeway/Expressway/Highway
- Transportation/Utility Corridor
- Railway*
- Waterbody
- North Saskatchewan River Valley and Ravine System
- Open Area

Active Transportation

- District Connector Bike Route - Current
- District Connector Bike Route - Planned
- Bike Connection - Identified Opportunity
- Pedestrian Priority Area
- Pedestrian Connection - Identified Opportunity
- Urban Greenway
- River Valley Trail Access
- Active Transportation Bridge - Current
- Active Transportation Bridge - Planned
- River Valley Active Transportation Regional Connection
- Active Transportation Regional Connection

Transit

- Mobility Hub
- Mass Transit Station - Current
- Mass Transit Station - Planned

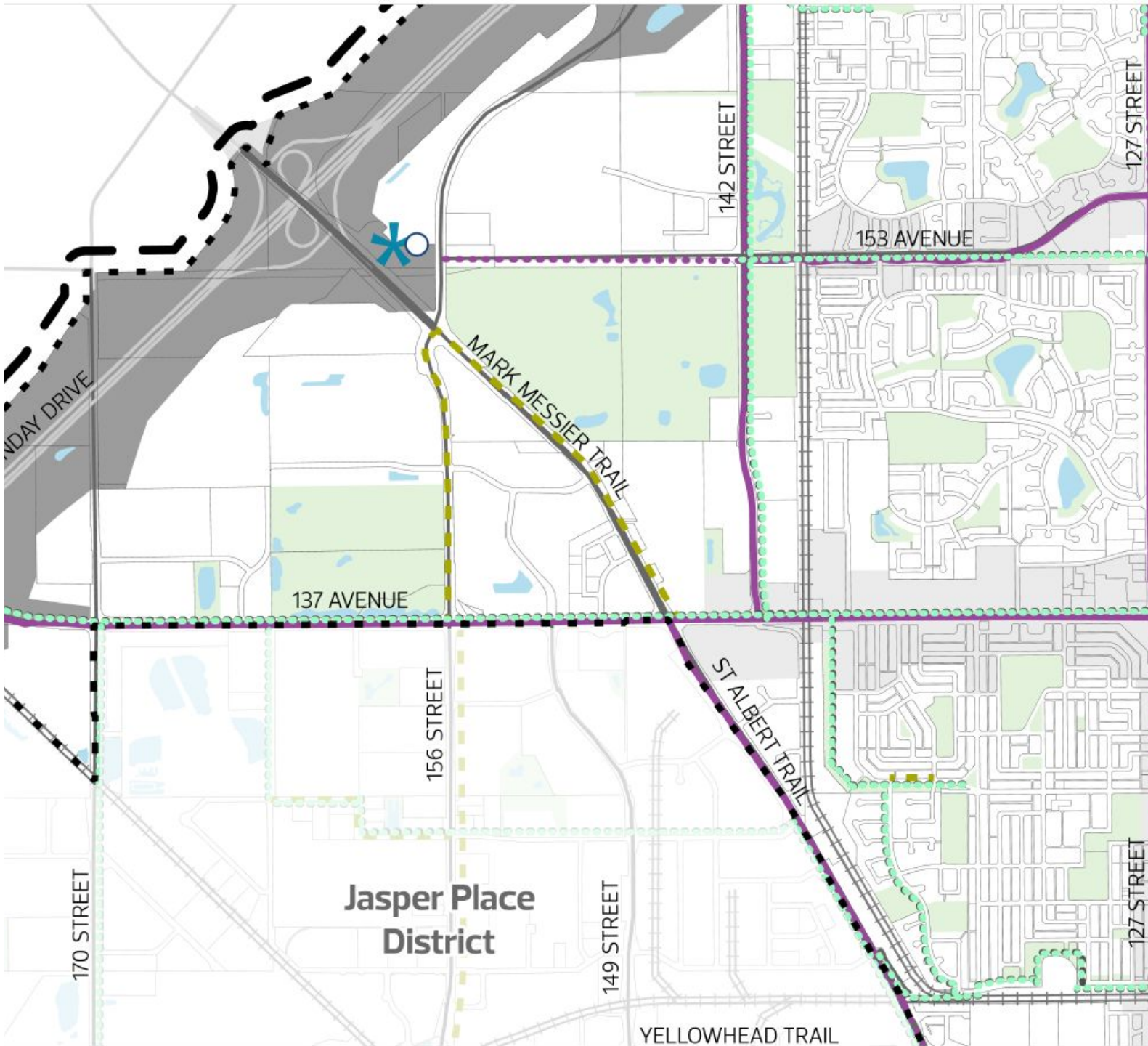
*Railway data is not comprehensive and for illustrative purposes only.

Note that some roadway alignments are conceptual. Refer to additional Plans in Effect, where applicable, for details.

Parcel mapping may not exist exactly as illustrated and is subject to revision during subdivision and rezoning.



Map 6: Active Transportation to 1.25 Million



- General Information**
- Municipal Boundary
 - Adjacent Jurisdiction Boundary
 - District Plan Boundary
 - Node or Corridor Area
 - Arterial Roadway
 - Freeway/Expressway/Highway
 - Transportation/Utility Corridor
 - Railway*
 - Waterbody
 - North Saskatchewan River Valley and Ravine System
 - Open Area
- Active Transportation**
- District Connector Bike Route - Current
 - District Connector Bike Route - Planned
 - Bike Connection - Identified Opportunity
 - Pedestrian Priority Area
 - Pedestrian Connection - Identified Opportunity
 - Urban Greenway
 - River Valley Trail Access
 - Active Transportation Bridge - Current
 - Active Transportation Bridge - Planned
 - River Valley Active Transportation Regional Connection
 - Active Transportation Regional Connection
- Transit**
- Mobility Hub
 - Mass Transit Station - Current
 - Mass Transit Station - Planned

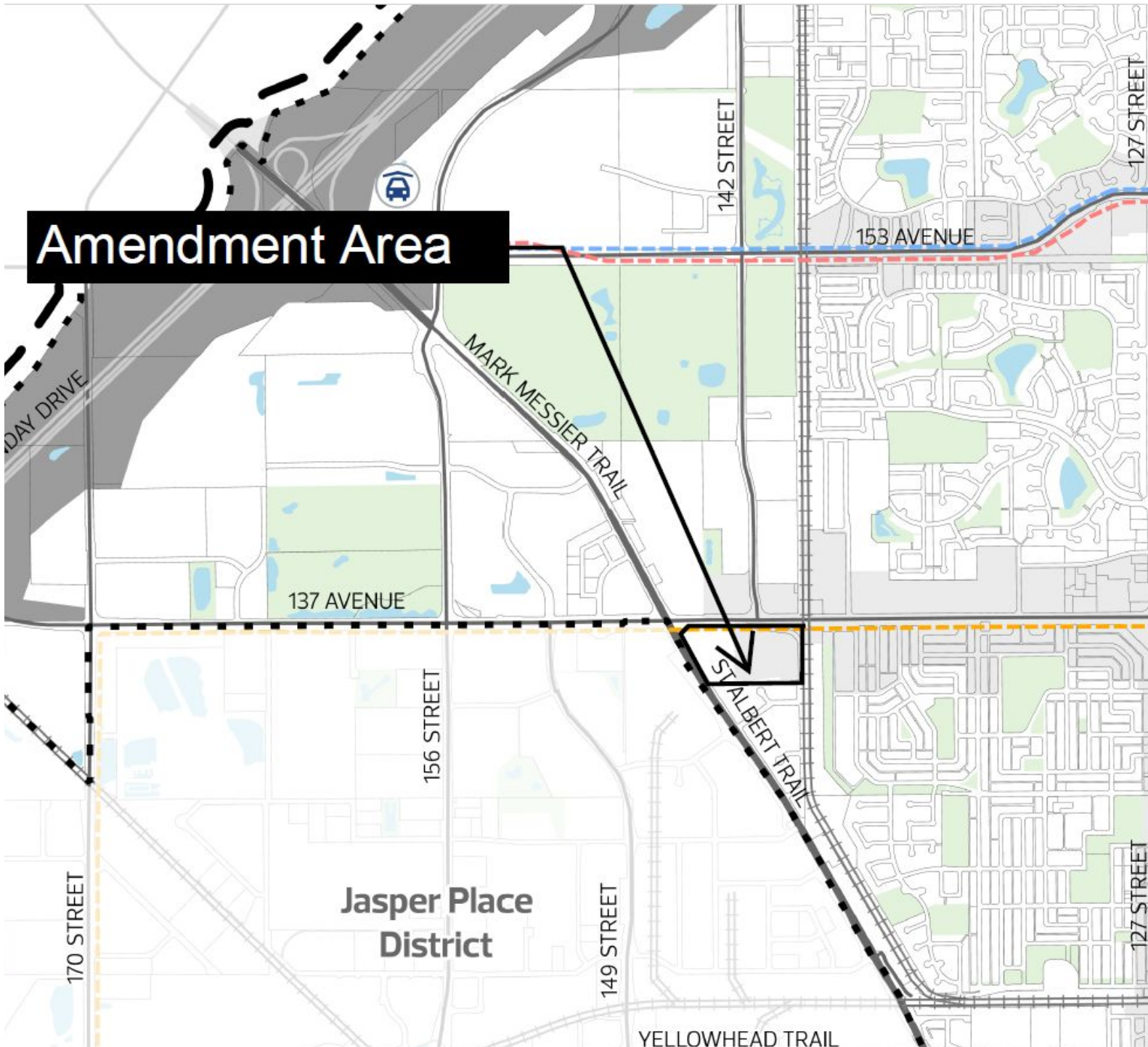
*Railway data is not comprehensive and for illustrative purposes only.

Note that some roadway alignments are conceptual. Refer to additional Plans in Effect, where applicable, for details.

Parcel mapping may not exist exactly as illustrated and is subject to revision during subdivision and rezoning.



Map 7: Transit to 1.25 Million



Amendment Area

- General Information**
- Municipal Boundary
 - Adjacent Jurisdiction Boundary
 - District Plan Boundary
 - Node or Corridor Area
 - Arterial Roadway
 - Freeway/Expressway/Highway
 - Transportation/Utility Corridor
 - Railway*
 - Waterbody
 - North Saskatchewan River Valley and Ravine System
 - Open Area
- Transit**
- Citywide Mass Transit - Current
 - Citywide Mass Transit - Planned
 - Citywide Mass Transit - Identified Opportunity
 - District Mass Transit - Current
 - District Mass Transit - Planned
 - Mobility Hub
 - Mass Transit Station - Current
 - Mass Transit Station - Planned
 - Park and Ride - Current
 - Park and Ride - Planned

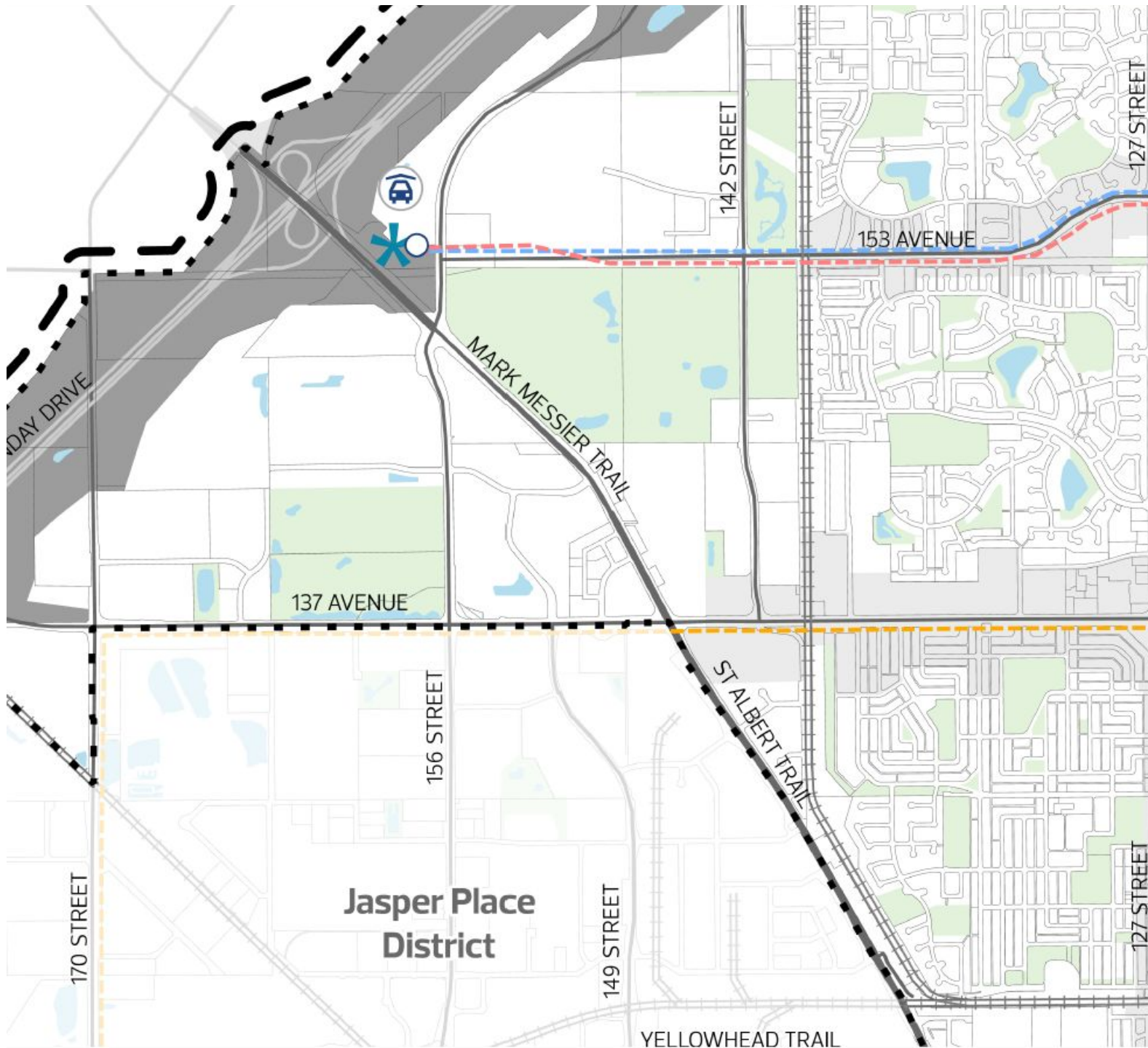
*Railway data is not comprehensive and for illustrative purposes only.

Note that some roadway alignments are conceptual. Refer to additional Plans in Effect, where applicable, for details.

Parcel mapping may not exist exactly as illustrated and is subject to revision during subdivision and rezoning.



Map 7: Transit to 1.25 Million



- General Information**
- Municipal Boundary
 - Adjacent Jurisdiction Boundary
 - District Plan Boundary
 - Node or Corridor Area
 - Arterial Roadway
 - Freeway/Expressway/Highway
 - Transportation/Utility Corridor
 - Railway*
 - Waterbody
 - North Saskatchewan River Valley and Ravine System
 - Open Area
- Transit**
- Citywide Mass Transit - Current
 - Citywide Mass Transit - Planned
 - Citywide Mass Transit - Identified Opportunity
 - District Mass Transit - Current
 - District Mass Transit - Planned
 - Mobility Hub
 - Mass Transit Station - Current
 - Mass Transit Station - Planned
 - Park and Ride - Current
 - Park and Ride - Planned

*Railway data is not comprehensive and for illustrative purposes only.

Note that some roadway alignments are conceptual. Refer to additional Plans in Effect, where applicable, for details.

Parcel mapping may not exist exactly as illustrated and is subject to revision during subdivision and rezoning.



Jasper Place District