

Charter Bylaw 19141

A Bylaw to amend Bylaw 14380, as amended,  
Arterial Roads for Development  
Amendment No. 26

Edmonton City Council enacts:

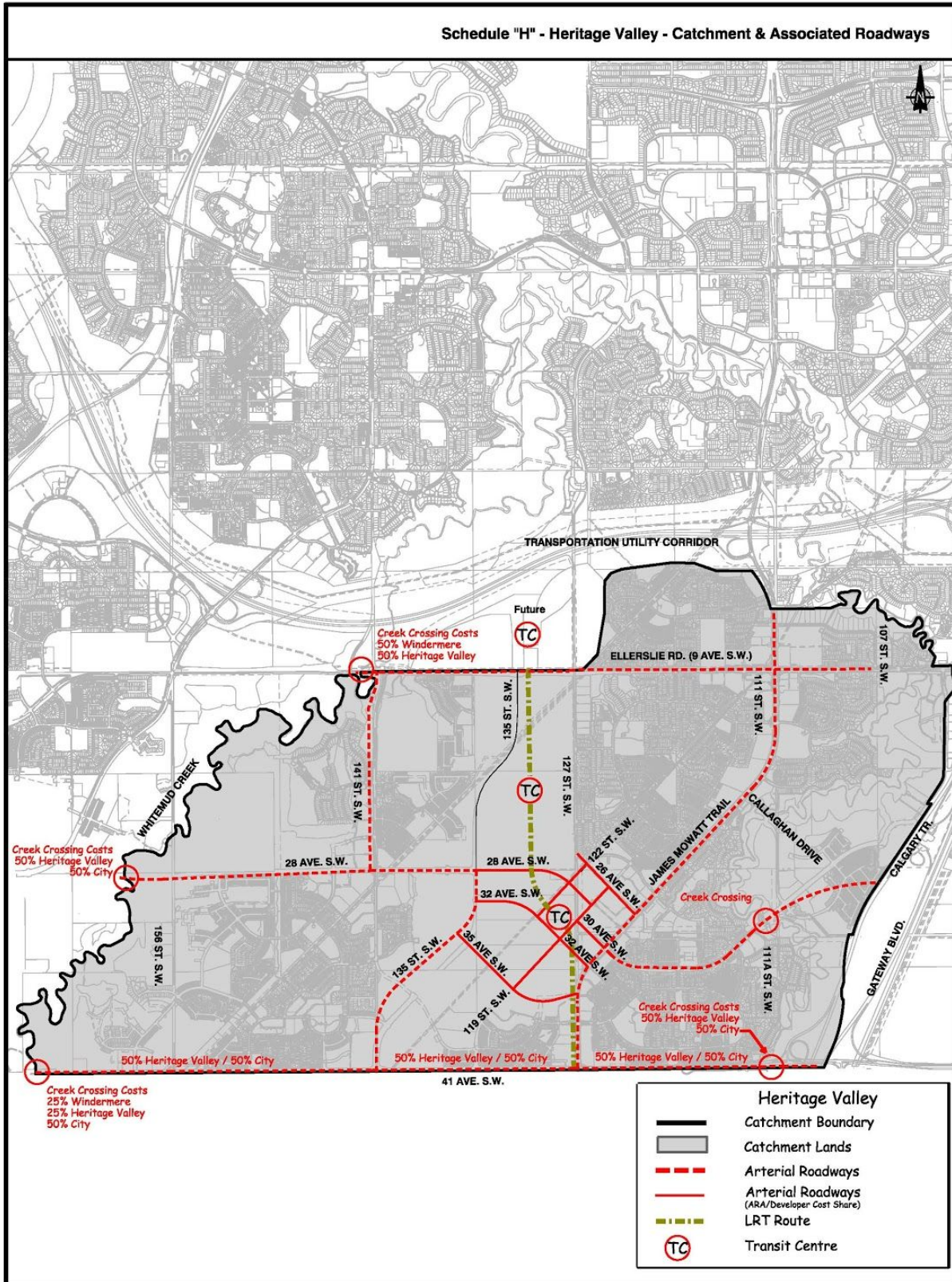
1. Bylaw 14380, the ARTERIAL ROADS FOR DEVELOPMENT BYLAW, as amended, is hereby further amended by:
  - a. replace Schedule “H” with the new Schedule “H”, attached as Appendix “A” to this Bylaw;
  - b. replace Schedule “F” with the new Schedule “F”, attached as Appendix “B” to this Bylaw;  
and
  - c. replace Schedule “X” with the new Schedule “X”, attached as Appendix “C” to this Bylaw.

READ a first time this	day of	, A. D. 2020;
READ a second time this	day of	, A. D. 2020;
READ a third time this	day of	, A. D. 2020;
SIGNED and PASSED this	day of	, A. D. 2020.

THE CITY OF EDMONTON

\_\_\_\_\_  
MAYOR

\_\_\_\_\_  
CITY CLERK



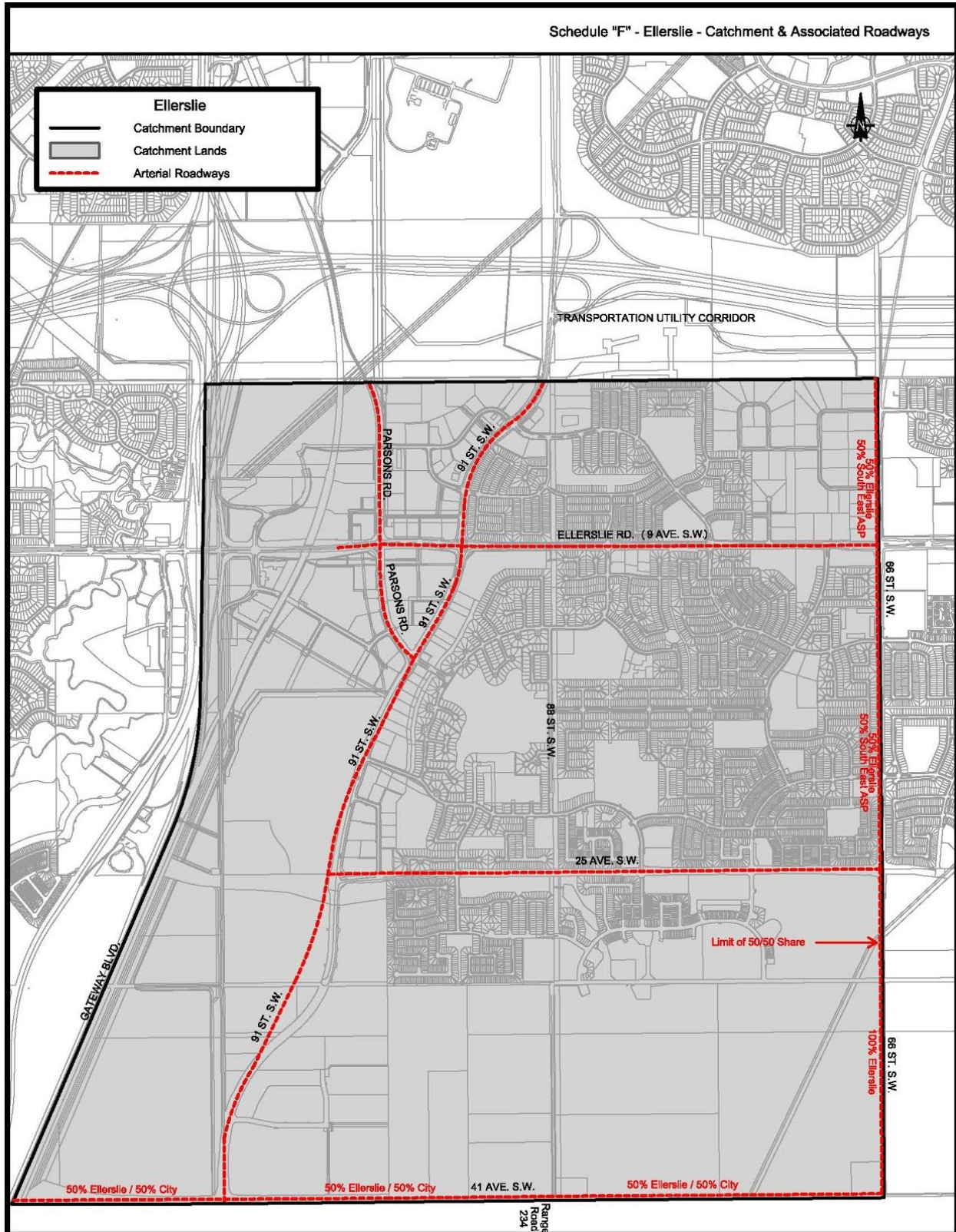
Schedule "H"

## Schedule “H”

### Heritage Valley – Catchment & Associated Roadways

The following Arterial Road Improvements are included in the Heritage Valley Catchment:

1. Ellerslie Road (two lanes) – 107 Street S.W. to 127 Street S.W.
2. Ellerslie Road (two lanes) – 127 Street S.W. to West of 135 Street S.W.
3. Ellerslie Road (four lanes) – West of 135 Street S.W. to Whitemud Creek
4. 41 Avenue S.W. (four lanes) – Calgary Trail to Whitemud Creek (50%/50% cost share with the City of Edmonton)
5. 111 Street S.W. (two lanes) – Transportation Utility Corridor to Ellerslie Road
6. 111 Street S.W. (four lanes) – Ellerslie Road to North of 41 Avenue S.W.
7. 127 Street S.W. (two lanes) – Ellerslie Road to 20 Avenue S.W. (roadway construction is complete – subsequent over expenditure is cost recoverable)
8. 141 Street S.W. (four lanes) – Ellerslie Road to 28 Avenue S.W.
9. Blackmud Creek crossing at 30 Avenue S.W.
10. Blackmud Creek crossing at 41 Avenue S.W. (50%/50% cost share with the City of Edmonton)
11. Whitemud Creek crossing at Ellerslie Road (50%/50% cost share with the Windermere ARA Catchment)
12. Whitemud Creek crossing at 28 Avenue S.W. (50%/50% cost share with the City of Edmonton)
13. Whitemud Creek crossing at 41 Avenue S.W. (25%/25%/50% between the Heritage Valley ARA Catchment, the Windermere ARA Catchment and the City of Edmonton, respectively)
14. Transit centre right-of-way dedication north of 28 Avenue SW, west of 127 Street SW
15. Transit centre right-of-way dedication between 119 Street SW and 122 Street SW, north of 32 Avenue SW
16. 135 Street S.W. (four lanes) – 28 Avenue S.W. to 41 Avenue S.W.
17. 26 Avenue S.W. – James Mowatt Trail to 127 Street SW (50% cost share with the Heritage Valley ARA and private development)
18. 28 Avenue SW – 119 Street S.W. to 135 Street S.W. (50% cost share with the Heritage Valley ARA and private development)
19. 30 Avenue S.W. – James Mowatt Trail to 119 Street S.W. (50% cost share with the Heritage Valley ARA and private development)
20. 32 Avenue S.W. – James Mowatt Trail to 135 Street S.W. (50% cost share with the Heritage Valley ARA and private development)
21. 35 Avenue S.W. – James Mowatt Trail to 135 Street S.W. (50% cost share with the Heritage Valley ARA and private development)
22. 119 Street S.W. – 35 Avenue S.W. to 32 Avenue S.W. (50% cost share with the Heritage Valley ARA and private development)
23. 119 Street S.W. – 32 Avenue S.W. to 26 Avenue S.W. (50% cost share with the Heritage Valley ARA and private development)
24. 122 Street S.W. – 32 Avenue S.W. to 26 Avenue S.W. (50% cost share with the Heritage Valley ARA and private development)
25. 30 Ave S.W. (four lanes) – Calgary Trail to James Mowatt Trail
26. 28 Ave S.W. (four lanes) – 135 Street S.W. to Whitemud Creek
27. Ten million dollars for 41 Avenue S.W. Interchange or 127 Street S.W. Interchange at the QE II highway (as per the Heritage Valley Memorandum of Understanding)



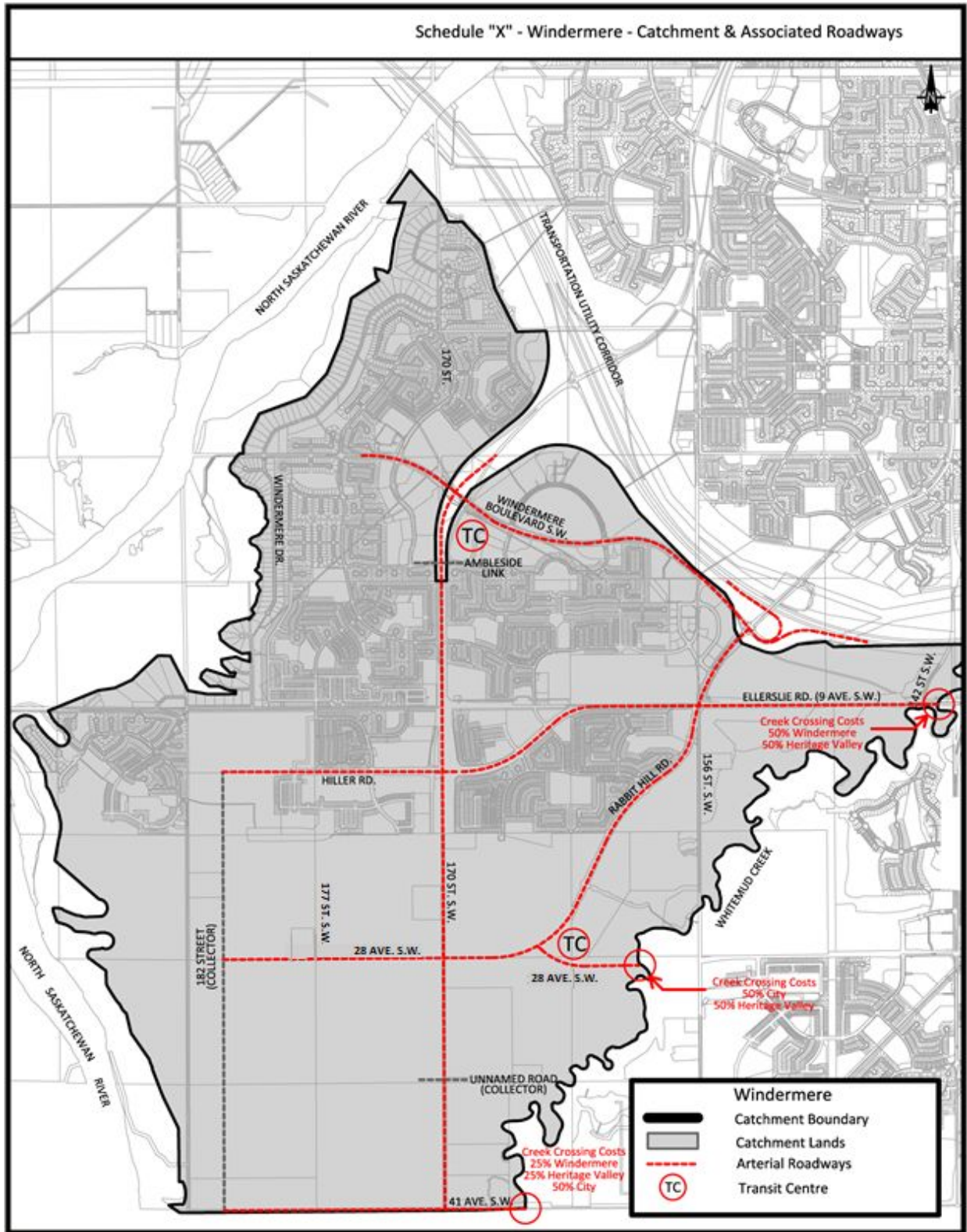
## **Schedule “F”**

### **Ellerslie – Catchment & Associated Roadways**

The following Arterial Road Improvements are included in the Ellerslie ARA Catchment:

1. Ellerslie Road (two lanes) – West of Parsons Road to 66 Street S.W.
2. Parsons Road (three lanes) – Transportation Utility Corridor to 91 Street S.W.
3. 91 Street (two lanes) – Transportation Utility Corridor to Ellerslie Road
4. 91 Street S.W. (five lanes) – Ellerslie Road to Parsons Road
5. 91 Street S.W. (five lanes) – Parsons Road to 25 Avenue S.W.
6. 91 Street S.W. (five lanes) – Approximately 565 m south of 25 Avenue S.W. to 41 Avenue S.W.
7. 25 Avenue S.W. (four lanes) – 91 Street S.W. to 66 Street S.W.
8. 41 Avenue S.W. (four lanes) – Gateway Boulevard to 66 Street S.W. (50%/50% cost share with the City of Edmonton)
9. 66 Street S.W. (three lanes) – Transportation Utility Corridor to Ellerslie Road (50%/50% cost share with the South East ASP ARA Catchment)
10. 66 Street S.W. (four lanes) – Ellerslie Road to approximately 250 metres south of 25 Avenue S.W. (50%/50% cost share with the South East ASP ARA Catchment)
11. 66 Street S.W. (four lanes) – approximately 250 metres south of 25 Avenue S.W. to 41 Avenue S.W.
12. Transit centre right-of-way dedication on the southwest corner of the intersection at Ellerslie Road and 62 Street S.W. (50%/50% cost share with the South East ASP ARA Catchment)

APPENDIX "C"



Schedule "X"

## **Schedule “X”**

### **Windermere – Catchment & Associated Roadways**

The following Arterial Road Improvements are included in the Windermere ARA Catchment:

1. Windermere Boulevard S.W. (four lanes) – 156 Street S.W. to approximately 350 metres west of 170 Street
2. Ellerslie Road (four lanes) – Whitemud Creek to 170 Street S.W.
3. Hiller Road (four lanes) – 170 Street S.W. to 182 Street S.W.
4. Rabbit Hill Road S.W. (four lanes) – Transportation Utility Corridor to 28 Avenue S.W.
5. 170 Street N.W. & S.W. (two lanes) – Transportation Utility Corridor to Ambleside Link S.W.
6. 170 Street S.W. (four lanes) – Ambleside Link S.W. to Unnamed Road (Collector) North of 41 Avenue S.W.
7. 170 Street S.W. (two lanes) – Unnamed Road (Collector) North of 41 Avenue S.W. to 41 Avenue S.W.
8. 28 Avenue S.W. (two lanes) – Whitemud Creek to Unnamed Road (Collector) East of Rabbit Hill Road S.W.
9. 28 Avenue S.W. (four lanes) – Unnamed Road (Collector) East of Rabbit Hill Road S.W. to 177 Street S.W.
10. 28 Avenue S.W. (two lanes) – 177 Street S.W. to 182 Street S.W.
11. 41 Avenue S.W. (two lanes) – Whitemud Creek to 182 Street S.W.
12. The permanent right-in and right-out ramps on the south side of the Anthony Henday Drive and 156 Street interchange
13. The earth works and grading for the 170 Street S.W. re-alignment within the Transportation Utility Corridor lands, at the location south of the Anthony Henday Drive and 170 Street interchange
14. Creek crossing at Ellerslie Road (50%/50% cost share with the Heritage Valley ARA Catchment)
15. Creek crossing at 28 Avenue S.W. (50%/50% cost shared between the City of Edmonton and Heritage Valley ARA Catchment)
16. Creek crossing at 41 Avenue S.W. (cost shared 25%/25%/50% between the Windermere ARA Catchment, the Heritage Valley ARA Catchment and the City of Edmonton, respectively)
17. Transit centre right-of-way dedication southeast of the intersection at 170 Street N.W. and 9 Avenue N.W.
18. Transit Centre right-of-way dedication northeast of the intersection at Rabbit Hill Road S.W. and 28 Avenue S.W.